



LED LIGHTED MIRROR

INSTALLATION & AFTERCARE INSTRUCTIONS

Electrical Safety Instructions

INSTALLATION has to be made by a qualified / registered electrician. DO NOT attempt to install by yourself as HAUSCHEN HOME will not be responsible if this product is not installed by a professional.

Important

Read this instruction carefully and refer back to them during installation to ensure that your product is fitted safely and correctly.

Always switch off the electrical supply at the mains during installation and maintenance. It is recommended that the fuse is withdrawn or the circuit breaker is switched off for the necessary circuit before installation.

Fitting in Bathrooms is subject to the appropriate zone in accordance with IEE Regulations. This product is suitable for zone 2 and outside zones. IT IS NOT suitable for installation in Zone 0 or Zone 1. It is also not suitable for installation in saunas, steam rooms or shower cubicles. This product is only suitable for permanent installation. DO NOT connect to a trailing plug and socket outlet. Although this product has an Ingress Protection rating of IP44 it is only suitable for indoor use. Do not attach the product to surfaces that are damp or otherwise electrically conductive.

Installation Care & Safety

Wear suitable eye protection when drilling. Take care when using power tools near water - the use of a residual current device (RCD) is advised. Beware of hidden cables or pipes. Take care if drilling on tiled surfaces in case the drill slips. A piece of masking tape applied to the wall before marking out the fixing holes will stop the drill from wandering.

DO NOT strike glass components with hard or pointed items.

DO NOT place very hot or very cold items against or in close proximity to glass surfaces unless an adequately thick insulation material is used to prevent such items coming in contact with the glass.

The nominal thickness of the mirror glass used in this product is 5mm. If the glass becomes chipped or broken replace immediately.

This product should be positioned well away from curtains and other fabrics. Never cover the mirror. This product is heated, we recommend that it is turned off after use and should never be left on for prolonged periods of time

This product could be dangerous if installed incorrectly.

PLEASE RETAIN THIS INSTRUCTION LEAFLET FOR FUTURE REFERENCE.

Cleaning

WHEN THE MIRROR MUST BE CLEANED, IT IS NECESSARY TO SWITCH IT OFF FIRSTLY!

DO NOT use abrasives or solvents when cleaning this product. Wipe off all water spillages as soon as possible using a soft, damp cloth.

DO NOT submerge mirror in water, do not let go of water in the mirror.

Compliance

All electronic components used in this products are UL listed.

Wiring

This product is designed and manufactured in class II category, no need earth connection.

The product need hardwired with the supply cable lead from the wall. Also we provide extra 1.5m U.S. 2-pin plug for easy connection with exist wall socket.

Lights & Control

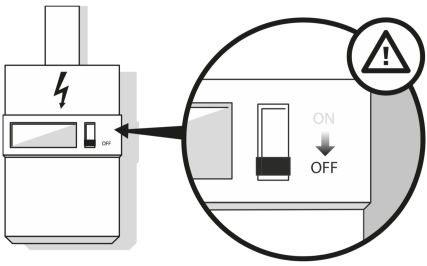
The integrated LED light source and system are not support to replaced by consumers, please DO NOT change by yourself.

The lights (and defogger) are controlled by touch sensor on mirror surface to turn on/off and adjust brightness and color temperatures. Keeping the mirror lights on, then you also could control it on & off by wall switch, if connect with it. The last working condition before switching off would be kept while turn on again, either brightness level or color temperature.

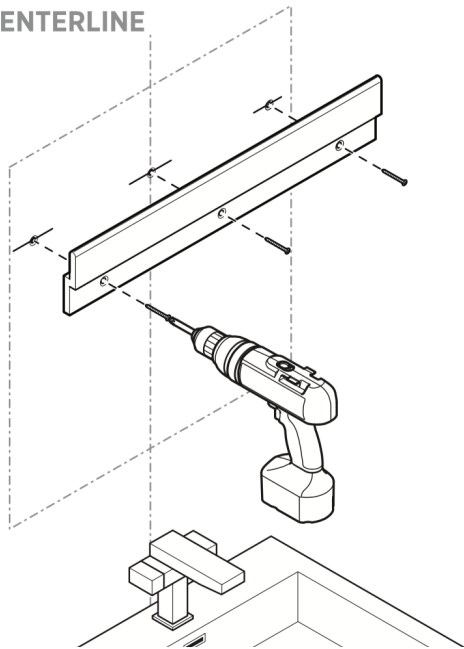


LED LIGHTED MIRROR

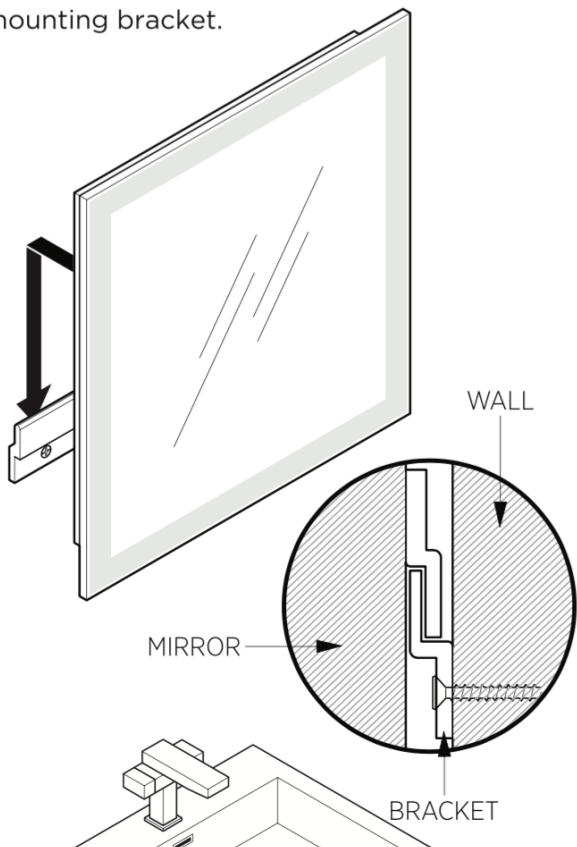
INSTALLATION & AFTERCARE INSTRUCTIONS



CENTERLINE



Hang the mirror on the mounting bracket.



Installation Procedure

Before starting your installation, please make sure

- The wall surface must be of suitable strength and construction
- The main electricity supply has been power-off

- ① Measure the distance between the top of the mirror and hanger bar on mirror back.
- ② Draw a horizontal line on the wall according to the height you want hang the mirror.

Center the mounting bracket along the lines from step 1, and mark the drill positions according to bracket. Ensure the drill positions are horizontal by using a spirit level. (step 2)

Accurately mark the hole positions with a pencil, drill and fit the wall plugs / anchors.

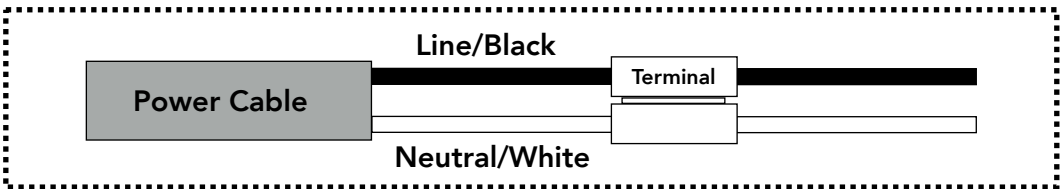
NOTE: The wall plugs supplied are only suitable for solid stone / brick walls. For any other wall types, please go to stores to buy the correct plugs & screws after checking.

- ③ The next step is to make the electrical connection from the mirror to the mains supply. Use the connection wire found at the rear of the mirror to make the necessary connections.
- ④ Securely attach the mounting bracket to the wall.
- ⑤ Hang the mirror on the mounting bracket and ensure mirror is securely mounted.

To remove the mirror, the mirror should first be lifted and then pulled away from the wall.

Make connections

Connect power cable from the wall to the connector terminals. Black to black, white to white.



Operating Instructions

SPECTRO 30R / OVAL
HALO 30R / OVAL



Brightness Dimmer
to adjust light brightness at the strongest, medium and nightlight as your need

Color Temperature Selection Key
to select 3000K or 5500K lights as you like

Power Switch Key
to control the LED lighting & Defogger ON/OFF