

**READ BEFORE USE
LIRE AVANT UTILISATION
LEA ANTES DE USAR**

Visit www.hamiltonbeach.com for our complete line of products and Use and Care Guides – as well as delicious recipes, tips, and to register your product online.

Rendez-vous sur www.hamiltonbeach.ca pour notre liste complète de produits et de nos manuels utilisateur – ainsi que nos délicieuses recettes et nos conseils.

Visite www.hamiltonbeach.com (EE. UU.) o www.hamiltonbeach.com.mx (México) para ver otros productos de Hamilton Beach o para contactarnos.

Questions

Please call us – our friendly associates are ready to help.
USA: 1.800.851.8900

Questions

N'hésitez pas à nous appeler – nos associés s'empresseront de vous aider.
CAN : 1.800.267.2826

Preguntas

Por favor llámenos – nuestros amables representantes están listos para ayudar.
EE. UU.: 1.800.851.8900
MEX: 01 800 71 16 100

Le invitamos a leer cuidadosamente este instructivo antes de usar su aparato.

Hamilton Beach®



FlexBrew® Single-Serve Coffee Maker

Cafetière 1 tasse
FlexBrew^{MD}

Cafetera para
Servicio Individual
Extra FlexBrew®

English 2
Français..... 9
Español 18

IMPORTANT SAFEGUARDS

When using electrical appliances, basic safety precautions should always be followed to reduce the risk of fire, electric shock, and/or injury to persons, including the following:

1. Read all instructions.
2. This appliance is not intended for use by persons (including children) with reduced physical, sensory, or mental capabilities, or lack of experience and knowledge, unless they are closely supervised and instructed concerning use of the appliance by a person responsible for their safety.
3. Close supervision is necessary when any appliance is used by or near children. Children should be supervised to ensure that they do not play with the appliance.
4. Do not touch hot surfaces. Use handles or knobs. Care must be taken, as burns can occur from touching hot parts or from spilled, hot liquid.
5. To protect against electric shock, do not place cord, plug, or coffee maker in water or other liquid.
6. Unplug from outlet when the coffee maker is not in use and before cleaning. Allow to cool before putting on or taking off parts and before cleaning the appliance.
7. Coffee maker must be operated on a flat surface away from the edge of counter to prevent accidental tipping.
8. Do not operate any appliance with a damaged supply cord or plug, or after the appliance malfunctions or has been dropped or damaged in any manner. Supply cord replacement and repairs must be conducted by the manufacturer, its service agent, or similarly qualified persons in order to avoid a hazard. Call the provided customer service number for information on examination, repair, or adjustment.
9. The use of accessory attachments not recommended by the appliance manufacturer may cause injuries.
10. Do not use outdoors.
11. Do not let cord hang over edge of table or counter or touch hot surfaces, including stove.
12. Do not place on or near a hot gas or electric burner, or in a heated oven.
13. **WARNING!** To avoid hot water spraying from the piercing needle, do not lift the lid during the brew process.
14. Do not use appliance for other than intended use.
15. **WARNING!** To reduce the risk of fire or electric shock, do not remove the bottom cover of the coffee maker. There are no user-serviceable parts inside. Repair should be done by authorized service personnel only.
16. **CAUTION!** Cut Hazard: Removable single-serve pack holder contains a sharp needle. Use caution when handling.
17. **CAUTION!** Cut Hazard: Piercing needle is sharp. Use caution when cleaning.

SAVE THESE INSTRUCTIONS

Other Consumer Safety Information

This appliance is intended for household use only.

⚠ WARNING Electrical Shock Hazard: This appliance is provided with a polarized plug (one wide blade) to reduce the risk of electric shock. The plug fits only one way into a polarized outlet. Do not defeat the safety purpose of the plug by modifying the plug in any way or by using an adapter. If the plug does not fit fully into the outlet, reverse the plug. If it still does not fit, have an electrician replace the outlet.

The length of the cord used on this appliance was selected to reduce the hazards of becoming tangled in or tripping over a longer cord. If a longer cord is necessary, an approved extension cord may be used. The electrical rating of the extension cord must be equal to or greater than the rating of the appliance. Care must be taken to arrange the extension cord so that it will not drape over the countertop or tabletop where it can be pulled on by children or accidentally tripped over.

To avoid an electrical circuit overload, do not use another high-wattage appliance on the same circuit with this appliance.

Parts and Features

*To order parts:

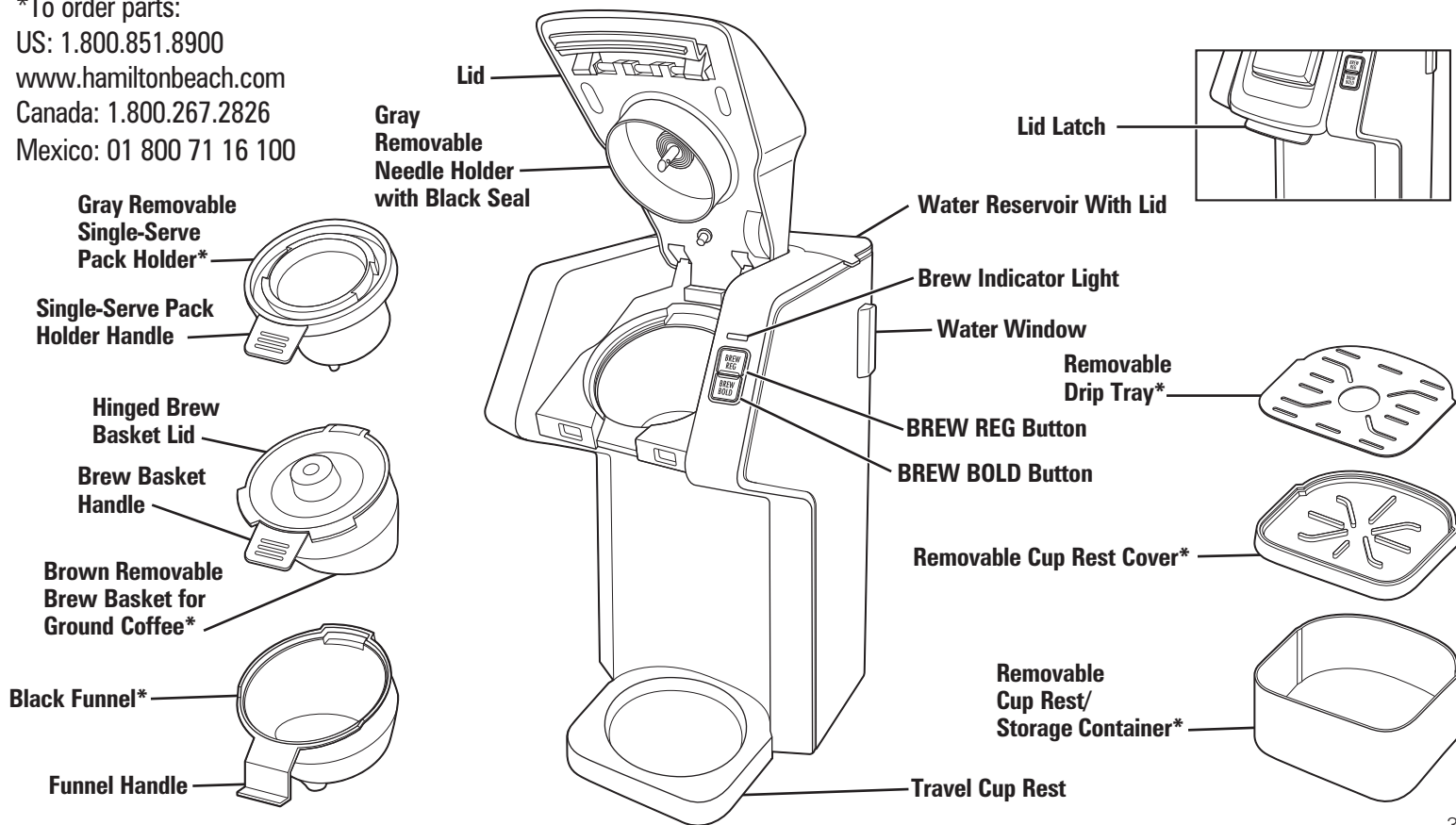
US: 1.800.851.8900

www.hamiltonbeach.com

Canada: 1.800.267.2826

Mexico: 01 800 71 16 100

BEFORE FIRST USE: Wash all removable parts in hot, soapy water. Rinse and dry. Brew one cycle with water and discard water.



How to Brew a Single-Serve Pack

⚠ WARNING Burn Hazard.

If overflow occurs, unplug and allow coffee maker to cool.

To avoid hot coffee overflowing:

- Fill reservoir with cup or travel mug of water into which coffee will be brewed.
- Fully insert cup or travel mug on drip tray.
- Do not lift lid during brewing process.
- If brew process is stopped early, water must be drained from unit. Place a large mug on drip tray/cup rest. Press **BREW REG** or **BREW BOLD** button. Failure to drain unit can cause next cup brewed to overflow.

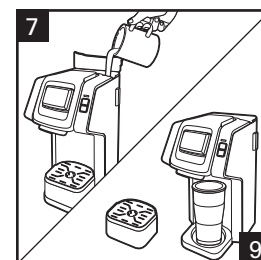
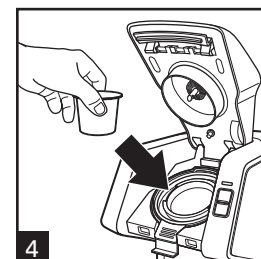
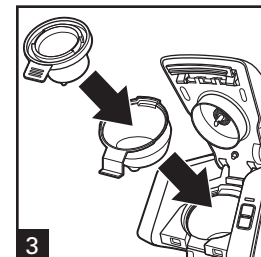
⚠ CAUTION Cut Hazard.

Removable single-serve pack holder has a sharp needle. Piercing needle on underside of lid also is sharp. Use caution when handling.

NOTES:

- Use only cold water in reservoir. Do not use hot water.
- Do not reheat coffee in machine.
- Do not use creamer or nondairy creamer in reservoir.
- After brewing hot cocoa single-serve packs, brew a water-only cycle without a single-serve pack to avoid possibility of clogging piercing needle.
- Coffee maker brews all water added.
- Press **BREW REG** or **BREW BOLD** button again to STOP brewing midcycle. Remaining water must be removed. See warning statement above.
- If brew indicator light flashes three times, lid is not closed. Lower lid until it clicks to lock. Press **BREW REG** or **BREW BOLD** button.
- Do not brew coffee without removable needle holder locked into place.

1. Plug into outlet.
2. Lift lid latch until lid clicks into place.
3. Insert funnel in opening. Place gray removable single-serve pack holder in funnel, aligning handle with funnel handle.
4. Place a pack into single-serve pack holder. Do not remove foil.
5. Close lid and snap in place to pierce single-serve pack.
6. Lift water reservoir lid.
7. Fill cup or travel mug into which coffee will be brewed and add water to water reservoir. 10 oz. (296 ml) of water is MAX amount for single-serve packs.
8. Close lid.
9. Use cup rest for a cup or mug and remove cup rest for a travel mug.
10. Press **BREW REG** or **BREW BOLD** button to start brewing. The brew indicator light will light up to show that coffee maker is brewing. The coffee maker will shut off automatically when brewing is complete.
11. Press **BREW REG** or **BREW BOLD** button to turn off. Unplug.
12. Funnel and single-serve pack holder should be rinsed after every use.



How to Brew Single-Serve Ground Coffee

⚠ WARNING Burn Hazard.

If overflow occurs, unplug and allow coffee maker to cool.

To avoid hot coffee overflowing:

- Fill reservoir with cup or travel mug of water into which coffee will be brewed.
- Fully insert cup or travel mug on drip tray.
- Remove single-serve pack holder before adding coffee grounds to brew basket.
- To avoid overflow, keep ground coffee below MAX fill line.
- Do not lift lid during brewing process.
- If brew process is stopped early, water must be drained from unit. Place a large mug on drip tray/cup rest. Press **BREW REG** or **BREW BOLD** button. Failure to drain unit can cause next cup brewed to overflow.

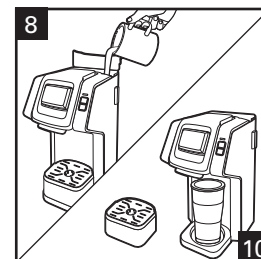
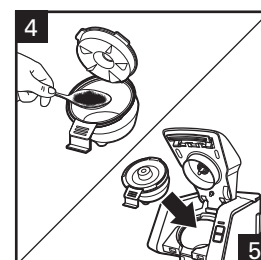
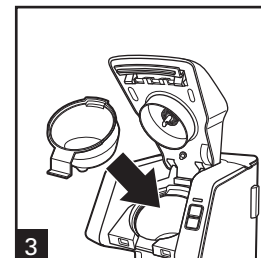
⚠ CAUTION Cut Hazard.

Piercing needle on underside of lid is sharp. Use caution when handling.

NOTES:

- Use only cold water in reservoir. Do not use hot water.
- Do not reheat coffee in machine.
- Do not use creamer or nondairy creamer in reservoir.
- Do not use hot cocoa powder or mix in brew basket.
- Coffee maker brews all water added.
- If finer ground coffee is used, coffee will continue to drip after light has gone off.
- Press **BREW REG** or **BREW BOLD** button again to STOP brewing midcycle. Remaining water must be removed. See warning statement above.
- If brew indicator light flashes three times, lid is not closed. Lower lid until it clicks to lock. Press **BREW REG** or **BREW BOLD** button.
- Do not brew coffee without removable brew basket with lid closed in place.
- If you have sediment from coffee, add a #1 paper cone coffee filter to brown removable brew basket.
- Do not brew coffee without removable needle holder locked into place.

1. Plug into outlet.
2. Lift lid latch until lid clicks into place.
3. Insert funnel in opening. Open brew basket lid; then place brown removable brew basket on counter top.
4. Add ground coffee to brown removable brew basket (3 tablespoons [44 ml]) maximum.
5. Close brew basket lid. Place brew basket in funnel, aligning handle with funnel handle.
6. Close lid and snap in place to latch lid closed.
7. Lift water reservoir lid.
8. Fill cup or travel mug into which the coffee will be brewed and add water to the water reservoir.
9. Close water reservoir lid.
10. Use cup rest for a cup/mug OR remove cup rest for a travel mug.
11. Press **BREW REG** or **BREW BOLD** button to start brewing. The brew indicator light will light up to show that coffee maker is brewing. The coffee maker will shut off automatically when brewing is complete.
12. Press **BREW REG** or **BREW BOLD** button to turn off. Unplug.
13. Funnel and brew basket should be rinsed after every use.



Care and Cleaning

⚠ WARNING Shock Hazard.

Do not immerse cord, plug, or coffee maker in any liquid.

⚠ CAUTION Cut Hazard.

Removable single-serve pack holder has a sharp needle. Piercing needle on underside of lid also is sharp. Use caution when handling.

General Cleaning

1. Unplug and allow to cool.
2. Hand-wash all removable parts in hot, soapy water. Rinse and dry or wash in TOP RACK only of dishwasher. **DO NOT** use "SANI" setting when washing in dishwasher. "SANI" cycle temperatures could damage your product.
3. Wipe outside of coffee maker with a soft damp cloth.

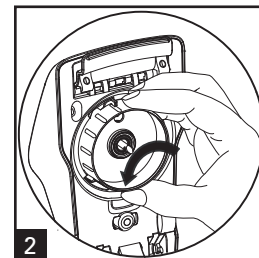
Routine Cleaning

All coffee makers should be cleaned at least once a month (once a week for areas with hard water).

1. Plug into outlet.
2. Pour 3/4 cup (177 ml) of plain white vinegar and 3/4 cup (177 ml) of cold water into reservoir.
3. Place a 14-oz. (414-ml) or larger cup or travel mug underneath to catch water/vinegar solution. Press **BREW REG** or **BREW BOLD** button once. When solution starts dispensing, press **BREW REG** or **BREW BOLD** button again to stop brewing and allow vinegar to clean. After 30 minutes, press **BREW REG** or **BREW BOLD** button and allow it to finish brew cycle. When brew cycle is finished, empty cup and rinse. Run 2 to 3 cycles of cold tap water. The unit is cleaned and ready to brew coffee.
4. Unplug.

Clogged Needle

1. Unplug and allow to cool.
2. Remove gray removable needle holder in lid by turning arrow from locked icon (🔒) to the unlocked icon (🔓).
3. Bend a small paper clip. Insert tip of paper clip through hole of the piercing needle and up into shaft of piercing needle to ensure grounds have been removed.
4. To replace gray removable needle holder, insert tab between lock icon (🔒) and unlock icon (🔓) and turn to right to lock.



Troubleshooting

Coffee maker will not brew/coffee not dispensing.

- The piercing needle may be clogged. Always remove gray removable needle holder. Clean piercing needle in lid of coffee maker as shown on page 6.
- Mineral deposits have formed. Clean coffee maker following directions in Care and Cleaning section.
- Too little water. Need 6 oz. (177 ml) or more.

Coffee tastes bad.

- Too much water was added or too much or too little ground coffee was added. Change amount of water to coffee grounds or use less water with coffee packs.
- Poor coffee quality and freshness.
- Poor water quality (use filtered or bottled water).

Coffee sediment in cup.

- Try a more coarsely ground coffee or add a #1 paper cone coffee filter to brew basket. Make sure hinged lid is closed on removable brew basket.

Water on counter under unit.

- Overfilled water reservoir. Do not add more than 14 ounces (414 ml) of water. Some mugs/cups do not pour cleanly and can dribble water down side of cup and onto counter.

Coffee overflows from brew basket.

- Use removable brew basket with lid for ground coffee.
- Use a lesser amount of ground coffee. 3 tablespoons (44 ml) is maximum amount of grounds to brew.
- When using whole bean coffee, a standard automatic drip coffee grind will yield best results. Be careful not to overgrind, since very finely ground coffee can cause overflow.
- Black seal around needle in removable needle holder is missing. Carefully place seal around needle and push until in place.

Coffee overflows from mug or travel mug.

- To prevent coffee overflowing from a mug/travel mug, use same mug/travel mug to brew into that was used to fill water reservoir. Do not add more than 14 ounces (414 ml) of water. There may also be additional water in system that is causing overflow. Remove brew basket or single-serve pack holder. Press and hold **BREW REG** or **BREW BOLD** button to remove any remaining water.

Water remaining in reservoir.

- Added too much or too little water. Place cup or travel mug on drip tray. Remove single-serve pack and replace brew basket. Repeat brewing cycle. Press and hold **BREW REG** or **BREW BOLD** button to remove any remaining water.

Coffee single-serve pack bursts.

- There is variability in single-serve pack manufacturing process which causes some types of single-serve packs to be weaker at seams so foil seal fails. Try a different brand.

Brew indicator light flashes:

- 2 times: Coffee maker needs to be cleaned. See page 6.
- 3 times: Coffee maker lid is not closed properly. Push lid down to lock into place.
- 7 times: Coffee maker needs to be cleaned. See page 6.
- 8 times: Needle is clogged. Always remove gray removable needle holder and follow "Clogged Needle" on page 6.
- 9 times: Not enough water. Add water to water reservoir.

Limited Warranty

This warranty applies to products purchased and used in the U.S. and Canada. This is the only express warranty for this product and is in lieu of any other warranty or condition.

This product is warranted to be free from defects in material and workmanship for a period of five (5) years from the date of original purchase in Canada and one (1) year from the date of original purchase in the U.S. During this period, your exclusive remedy is repair or replacement of this product or any component found to be defective, at our option; however, you are responsible for all costs associated with returning the product to us and our returning a product or component under this warranty to you. If the product or component is no longer available, we will replace with a similar one of equal or greater value.

This warranty does not cover glass, filters, wear from normal use, use not in conformity with the printed directions, or damage to the product resulting from accident, alteration, abuse, or misuse. This warranty extends only to the original consumer purchaser or gift recipient. Keep the original sales receipt, as proof of purchase is required to make a warranty claim. This warranty is void if the product is used for other than single-family household use or subjected to any voltage and waveform other than as specified on the rating label (e.g., 120 V ~ 60 Hz).

We exclude all claims for special, incidental, and consequential damages caused by breach of express or implied warranty. All liability is limited to the amount of the purchase price. **Every implied warranty, including any statutory warranty or condition of merchantability or fitness for a particular purpose, is disclaimed except to the extent prohibited by law, in which case such warranty or condition is limited to the duration of this written warranty.** This warranty gives you specific legal rights. You may have other legal rights that vary depending on where you live. Some states or provinces do not allow limitations on implied warranties or special, incidental, or consequential damages, so the foregoing limitations may not apply to you.

To make a warranty claim, do not return this appliance to the store. Please call 1.800.851.8900 in the U.S. or 1.800.267.2826 in Canada or visit hamiltonbeach.com in the U.S. or hamiltonbeach.ca in Canada. For faster service, locate the model, type, and series numbers on your appliance.