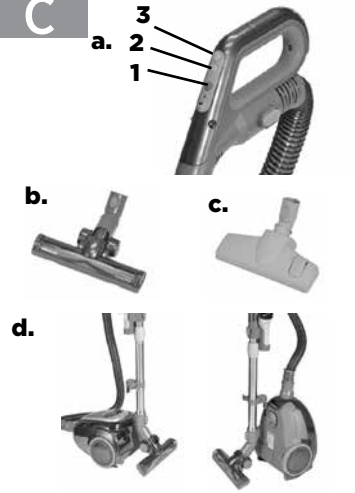
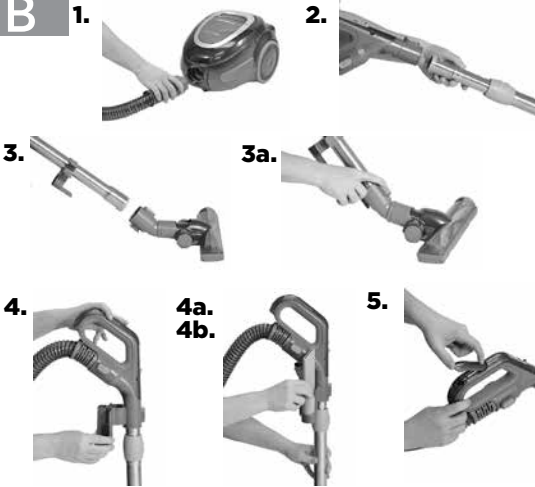
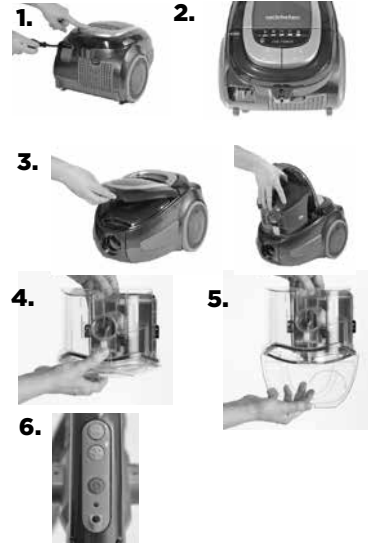
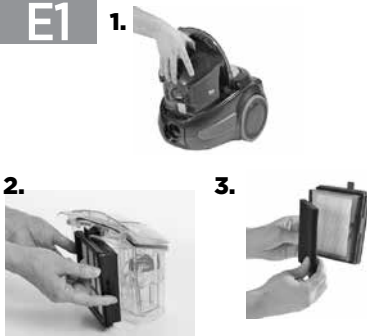


HARD FLOOR EXPERT™  
**BAGLESS CANISTER VACUUM**  
**1161**

**A****C****B****D****E1****E2****E3**

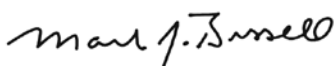
## Thanks for buying a BISSELL vacuum

We're glad you purchased a BISSELL vacuum. Everything we know about floor care went into the design and construction of this complete, high-tech home cleaning system.

Your BISSELL vacuum is well made, and we back it with a limited two-year guarantee. We also stand behind it with a knowledgeable, dedicated Consumer Care department, so, should you ever have a problem, you'll receive fast, considerate assistance.

My great-grandfather invented the floor sweeper in 1876. Today, BISSELL is a global leader in the design, manufacture, and service of high-quality homecare products like your BISSELL vacuum.





Thanks again, from all of us at BISSELL.



Mark J. Bissell  
Chairman & CEO

---

## Symbol Definitions

	<b>WARNING</b>	<b>AN ACTION OR ATTENTION IS NEEDED TO THIS AREA IN ORDER TO REDUCE THE RISK OF ELECTRIC SHOCK, FIRE, OR INJURY</b>
	<b>TIP</b>	<b>NOTE OR HINT WHICH IS NOT ESSENTIAL BUT MAY IMPROVE USABILITY</b>
	<b>GUIDE</b>	<b>READ USER GUIDE FOR COMPLETE SAFETY AND USER INSTRUCTIONS</b>
	<b>WEEE</b>	<b>DO NOT THROW THE APPLIANCE AWAY WITH THE NORMAL HOUSEHOLD WASTE AT THE END OF ITS LIFE, BUT HAND IT IN AT AN OFFICIAL COLLECTION POINT FOR RECYCLING. BY DOING THIS YOU WILL HELP TO PRESERVE THE ENVIRONMENT.</b>



- » Before cleaning under low furniture, check area first for objects that might harm the unit or block the hose.
- » Hair, string and small objects can block the hose and tools. Check them occasionally for obstructions.
- » Use the air flow regulator to reduce air flow as needed when using the tools.
- » For maximum cleaning performance, check the filters often and clean or replace if necessary.

# IMPORTANT SAFETY INSTRUCTIONS

## **READ ALL INSTRUCTIONS BEFORE USING YOUR VACUUM.**

When using an electrical appliance, basic precautions should be observed, including the following:



## **WARNING**

### **TO REDUCE THE RISK OF FIRE, ELECTRIC SHOCK, OR INJURY:**

- » Do not leave cleaner when it is plugged in.
- » Unplug from outlet when not in use and before servicing.
- » Do not use with damaged cord or plug.
- » To unplug grasp plug not cord.
- » Do not pull or carry by cord, use cord as a handle, close door on cord, pull cord around sharp corners, run cleaner over cord, or expose cord to heated surfaces.
- » Hold plug when rewinding the cord onto the reel. Do not allow the plug to whip when rewinding.
- » Do not use cleaner if it has been dropped, damaged, left outdoors or dropped into water. Have it repaired at an Authorized Service Center.
- » Do not allow children to use as a toy.
- » Do not use outdoors or on wet surfaces.
- » Do not handle cleaner or plug with wet hands.
- » Do not put any object into openings. Do not use with any opening blocked; keep free of dust, lint, hair and anything that may reduce air flow.
- » Do not use without filters in place.
- » Do not allow hair, loose clothing, fingers or body parts to get near openings or floor brush in the appliance.
- » Do not pick up hot coals, cigarette butts, matches or any hot, smoking, or burning objects.
- » Do not pick up hard or sharp objects such as glass, nails, screws, coins, etc.
- » Do not pick up flammable or combustible materials (lighter fluid, gasoline, kerosene, etc.) or use in the presence of explosive liquids or vapor.
- » Do not unplug by pulling on cord.
- » Do not pick up toxic material (chlorine bleach, ammonia, drain cleaner, etc.).
- » Do not use in an enclosed space filled with vapors given off by oil base paint, paint thinner, some moth proofing substances, flammable dust, or other explosive or toxic vapors.
- » Do not use for any purpose other than described in this User's Guide.
- » Always turn off this appliance before connecting or disconnecting vacuum hose.
- » Use only manufacturer's recommended attachments.
- » Use only on dry, indoor surfaces.
- » Keep appliance on a level surface.
- » Turn off all controls before plugging or unplugging cleaner.
- » Be extra careful when cleaning stairs.
- » Close attention is necessary when used by or near children.

## **SAVE THESE INSTRUCTIONS FOR FUTURE USE**

This model is for household use only.

## **THIS APPLIANCE HAS A POLARIZED PLUG.**

To reduce the risk of electric shock, this appliance has a polarized plug (one blade is wider than the other). This plug will fit in a polarized outlet only one way. If the plug does not fit fully in the outlet, reverse the plug. If it still does not fit, contact a qualified electrician to install a proper outlet. Do not change the plug in any way.

## A Product View



Do not plug in your cleaner until you have completely assembled it per the following instructions and are familiar with all instructions and operating procedures.

- |                             |                    |
|-----------------------------|--------------------|
| 1 Hose Connector            | 10 Filter          |
| 2 Front Cover               | 11 Carpet Tool     |
| 3 Dust Bin (beneath cover)  | 12 Hard Floor Tool |
| 4 Big Wheel                 | 13 Telescopic Wand |
| 5 Variable Suction Controls | 14 Tool Clip       |
| 6 Rewind Button             | 15 Crevice Tool    |
| 7 Power Button              | 16 Dusting Brush   |
| 8 Carry Handle              | 17 Handle          |
| 9 Power Cord                | 18 Hose            |

## B Assembly

You do not need any tools to assemble your vacuum cleaner.

1. Connect the hose to the canister body. Once it snaps, it is in place.
  - a. To disconnect the hose, squeeze the snaps located on the side of the hose connection and pull out
2. Connect the handle to the telescopic wand by aligning the insert and securing it in place. Once it snaps, it is in place.
3. Connect the desired floor brush to the end of the telescopic wand by aligning the insert and securing in place.
4. Snap the tool holder into place.
  - a. Dusting tool
  - b. Crevice tool
5. Pop open the battery cover on the handle and place the two AAA batteries in the correct location.



Before using your vacuum, make sure that the dirt cup and all filters are in place. Do not operate your vacuum without the dirt cup and filters.



Be careful to avoid injury as cord retracts very quickly.



Plastic film can be dangerous. To avoid danger of suffocation, keep away from babies and children.

## C Special Features

### a. Variable Suction

The Hard Floor Expert is equipped with variable suction to easily go from cleaning carpets and hard floors to delicate surfaces like drapes and upholstery.

1. **Power Button** Once the vacuum is plugged in, press the main power button to activate the remote control. Use the power button on the remote to start and stop cleaning.

**NOTE: If the remote is not working, check the placement of the batteries in the handle.**

2. **Increase Button “+”** Press to increase suction power.

3. **Reduce Button “-”** Press to decrease suction power for use on delicate surfaces.

**NOTE: the lights on the base of the canister will indicate the level of suction power.**

### b. Hard Floor Tool

The hard floor tool is equipped to clean hard floor surfaces such as wood, tile, and laminate. This tool is ideal for removing fine dirt and debris on hard flooring.

Note: The roller brush will only rotate on hard floor surfaces. It can be used to clean carpet, but the brush will not rotate.

### c. Carpet Tool Vacuum Carpeted Areas

Set the multi-surface brush switch to the carpet position (brushes should retract).

#### Vacuum Hard Surfaces

Set the multi-surface brush switch to the hard floor position (brushes should be visible).

### d. Storage

There are two storage options for your Hard Floor Expert:

1. Locate the groove behind the machine and connect the floor tool to the base

**Or**

2. Locate the groove on the backside of the canister and connect the telescopic wand.

## D Operations

1. Locate the power cord on the back of the unit and plug in.

**NOTE: The power cord can be pulled out until the yellow mark is visible.**

2. Turn on the vacuum by pressing the power button on the base of the canister.

**NOTE: The vacuum starts at the maximum suction.**

Once the machine has been turned on the remote control can be used. The main power button on the canister will need to be activated at the start of every use before the remote control will work.

3. When the dust cup reaches the MAX line, turn off the machine and remove the dust cup from the base of the machine, by opening the lid and pulling up

4. To empty, locate the yellow tab that says "push" and push to empty

5. Reassemble the dust cup after cleaning.

6. When cleaning is complete. Power off the vacuum by using the remote, placing it on standby. Then press the power button on the base of the canister to turn the vacuum completely off.

7. Unplug the vacuum from the electrical outlet.

## E Care & Storage

To maintain maximum performance, perform these simple maintenance steps.

### E1 – Filter assembly, cleaning, and replacement

---

1. Remove dirt bin from the base of the canister.

2. Locate the filter on the back of the dirt bin and pull the latches to separate the filter from the bin.

3. Separate the pleated filter from the foam filter.

4. Clean pleated filter by tapping it lightly against the trash can.

5. The foam filter can be rinsed under water.

**NOTE: Make sure the filter is dry before replacing**

6. Reassemble the components.

### E2 – Post-motor filter cleaning and replacement

---

1. Locate the post motor filter on the back of the canister.

2. Remove the filter by pulling down on the tab and pulling out.

3. Separate the filter from the door.

4. Tap out the filter or replace if needed.

5. Reassemble the components.

### E3 – Hard floor tool cleaning

---

1. Use a coin or slotted screwdriver to turn the knob from lock to unlock and remove the roller brush cover.

2. Remove the brush from the chamber for cleaning.

3. Replace the brush and secure the cover making sure to lock it in place.

### Battery replacement

---

Push the battery cover open and replace batteries as indicated in the battery chamber.



To reduce the risk of electric shock, turn power switch off and disconnect plug from electrical socket before performing maintenance or care.



Do not operate cleaner with damp or wet filters or without all filters in place.

This product is intended for household use only and not for commercial or industrial use. Vacuuming of dust from products like plaster, concrete or ashes will damage the motor and void the warranty.

# Troubleshooting

## **WARNING**

To reduce the risk of electric shock, turn power switch off and disconnect polarized plug from electrical socket before performing maintenance or troubleshooting checks.

<b>Problem</b>	<b>Possible causes</b>	<b>Remedies</b>
<b>Motor not operating</b>	Check that the plug is connect to the socket securely	Re-plug
<b>Weakened suction power</b>	Full dust cup	Empty dust cup
	Dusty filter(s)	Check and clean or replace filters
	Clog in the brush roll or hose	Disconnect the hose at all connection points to check for large debris
	Variable suction set to the lowest speed	Press the "+" on the remote to dial up the suction
<b>Power cord cannot be rewound completely</b>	The power cord may pile on one side of the coiler	Pull out a large section of the cord and rewind it
<b>Power cord cannot be pulled out</b>	Power cord may be twisted	Press the REWIND button and rewind or pull out the cord repeatedly
<b>Infrared remote control failure</b>	Batteries may be bad	Replace batteries
	Bad infrared connection	Make sure the infrared lights are not hidden and visible
<b>Vacuum not turning on with remote control</b>	The main power switch on the vacuum body was not turned on	Turn on the power on the base of the canister, which will activate the remote control

**Please do not return this product to the store.**

Other maintenance or service not included in the manual should be performed by an authorized service representative.

Thank you for selecting a BISSELL product.

**For any questions or concerns, BISSELL is happy to be of service. Contact Consumer Care listed on page 8.**

# Consumer Guarantee

This warranty gives you specific legal rights, and you may also have other rights which may vary from state to state. If you need additional instruction regarding this warranty or have questions regarding what it may cover, please contact BISSELL Consumer Care by E-mail, telephone, or regular mail as described below.

## Limited Two-Year Warranty

Subject to the \*EXCEPTIONS AND EXCLUSIONS identified below, upon receipt of the product BISSELL will repair or replace (with new or remanufactured components or products), at BISSELL's option, free of charge from the date of purchase by the original purchaser, for two years any defective or malfunctioning part.

See information below on "If your BISSELL product should require service".

This warranty applies to product used for personal, and not commercial or rental service. This warranty does not apply to fans or routine maintenance components such as filters, belts, or brushes. Damage or malfunction caused by negligence, abuse, neglect, unauthorized repair, or any other use not in accordance with the User's Guide is not covered.

BISSELL IS NOT LIABLE FOR INCIDENTAL OR CONSEQUENTIAL DAMAGES OF ANY NATURE ASSOCIATED WITH THE USE OF THIS PRODUCT. BISSELL'S LIABILITY WILL NOT EXCEED THE PURCHASE PRICE OF THE PRODUCT.

**Some states do not allow the exclusion or limitation of incidental or consequential damages, so the above limitation or exclusion may not apply to you.**

## \*EXCEPTIONS AND EXCLUSIONS FROM THE TERMS OF THE LIMITED WARRANTY

THIS WARRANTY IS EXCLUSIVE AND IN LIEU OF ANY OTHER WARRANTIES EITHER ORAL OR WRITTEN. ANY IMPLIED WARRANTIES WHICH MAY ARISE BY OPERATION OF LAW, INCLUDING THE IMPLIED WARRANTIES OF MERCHANTABILITY AND FITNESS FOR A PARTICULAR PURPOSE, ARE LIMITED TO THE two YEAR DURATION FROM THE DATE OF PURCHASE AS DESCRIBED ABOVE.

Some states do not allow limitations on how long an implied warranty last so the above limitation may not apply to you.

**NOTE: Please keep your original sales receipt. It provides proof of date of purchase in the event of a warranty claim.**

# Consumer Care

## If your BISSELL product should require service:

Contact BISSELL Consumer Care to locate a BISSELL Authorized Service Center in your area.

If you need information about repairs or replacement parts, or if you have questions about your warranty, contact BISSELL Consumer Care.

## Website or E-mail:

[www.BISSELL.com](http://www.BISSELL.com) or [www.bissell.ca](http://www.bissell.ca)

## Or Call:

BISSELL Consumer Care  
1-800-263-2535

Monday - Friday 8am - 10pm ET  
Saturday 9am - 8pm ET  
Sunday 10am - 7pm ET

## Or Write:

BISSELL Homecare, Inc.  
PO Box 3606  
Grand Rapids, MI 49501  
ATTN: Consumer Care

**Visit the BISSELL website: [www.BISSELL.com](http://www.BISSELL.com) or [www.bissell.ca](http://www.bissell.ca)**

When contacting BISSELL, have model number of cleaner available.

Please record your Model Number: \_\_\_\_\_ Please record your Purchase Date: \_\_\_\_\_

**NOTE: Please keep your original sales receipt. It provides proof of the date of purchase in the event of a Guarantee claim. See Guarantee for details.**



©2017 BISSELL Homecare, Inc.  
Grand Rapids, Michigan  
All rights reserved. Printed in China  
Part Number 161-2224 02/17  
Visit our website at: [www.BISSELL.com](http://www.BISSELL.com)