

# iMagniphy

*Hello, and welcome to your amazing new set of LED magnifying lenses from iMagniphy.*

*We are excited that you have purchased this set of lenses because you should see a dramatic improvement in the clarity of what you're trying to examine now that you have the power of 2 LED lights to help you.*

*Instructions are included in the box but we like to point out a couple of quick pointers to get you up and running with your new lens set.*

*Once you open the box you should be greeted with your new lens set, plus a cleaning cloth and a set of instructions on how to use the lens and install the batteries.*

*When you pick up the main handle you need to look on the back side and open up the compartment to install the batteries - as you can see from the picture.*

*Install 3 x AAA batteries and then close the cover again.*

*Switch on the "on/off" switch and you should see your magnifying glass come to life.*

*Now - get out there and start illuminating as you magnify!!*

*We sincerely hope you enjoy your new set of magnifying glass lenses.*

*If you have any issues with your new magnifying glass set please get in touch with us right away and we will help you fix your problem immediately.*

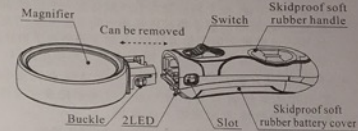
*The team - iMagniphy*

*[support@imagniphy.com](mailto:support@imagniphy.com)*



## 2LED Main Lens Interchangeable Type Magnifier (Detachable hand-held type magnifier)

This product is a kind of magnifier based on brand new concept. An LED light source handle with detachable slot is equipped with several main lens of different magnifications. Main lens can be interchanged to meet the needs of different magnifications under various conditions. Compared to traditional magnifiers, it is more environment-friendly, economical and practical.



### Application range:

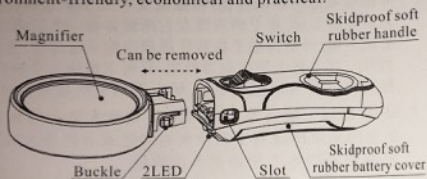
offices, hospitals, schools, printing, homes, electronics, archaeology, stamps collecting, mechanical processing and so on.

### Features:

1. Handle adopts ergonomics principle design, and is wrapped with soft rubber to ensure better hand feeling and skid-proof property. It will not cause any fatigue after long time use.
2. Brand new triangle overlapped battery compartment design covers small space, and improves battery storage capacity of LED.
3. LED adopts toggle switch, wave-texture switch push plate to facilitate operation and even extend switch service lifetime.
4. Handle front section has two slots used for rapidly interchanging main lens of different magnifications.
5. Lens adopts acrylic resin material specially reinforced to ensure surface hardness of 5H. As result, lens are hard to be abraded, not easily broken and will not generate foggy layers due to mildew after a long period of storage.
6. It is required to turn on LED to ensure clearer magnifying effect when viewing objects in time of insufficient light.

## 2LED Main Lens Interchangeable Type Magnifier (Detachable hand-held type magnifier)

This product is a kind of magnifier based on brand new concept. An LED light source handle with detachable slot is equipped with several main lens of different magnifications. Main lens can be interchanged to meet the needs of different magnifications under various conditions. Compared to traditional magnifiers, it is more environment-friendly, economical and practical.



### Application range:

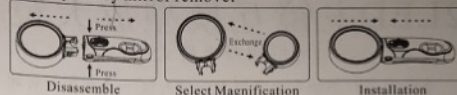
offices, hospitals, schools, printing, homes, electronics, archaeology, stamps collecting, mechanical processing and so on.

### Features:

1. Handle adopts ergonomics principle design, and is wrapped with soft rubber to ensure better hand feeling and skid-proof property. It will not cause any fatigue after long time use.
2. Brand new triangle overlapped battery compartment design covers small space, and improves battery storage capacity of LED.
3. LED adopts toggle switch, wave-texture switch push plate to facilitate operation and even extend switch service lifetime.
4. Handle front section has two slots used for rapidly interchanging main lens of different magnifications.
5. Lens adopts acrylic resin material specially reinforced to ensure surface hardness of 5H. As result, lens are hard to be abraded, not easily broken and will not generate foggy layers due to mildew after a long period of storage.
6. It is required to turn on LED to ensure clearer magnifying effect when viewing objects in time of insufficient light.

### Operating guide:

#### 1. The primary mirror remove:

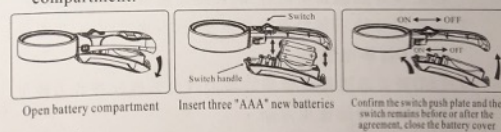


Choose main lens of appropriate magnification according to texture, degree of thickness or character size of the viewed object. There is a slot respectively on the left and right sides of handle front section. If main lens requires to be interchanged, press the main lens elastic button inside the slot with two fingers, pull the main lens forwards with another hand at the same time, and the main lens is separated from the handle at this time, then interchange the main lens of required magnification, finally insert the slot on the handle.

2. Focusing: The magnifying glass at the object of observation, hand magnifier to move back and forth between the object and the eyes until the picture, loud and clear, or put a magnifying glass to eyes, moving objects, until the image is big and clear.
3. Lighting: light source can be singly used for lighting handle. If only used for lighting, please remove the lens to prevent damage to the lens.

#### Replacement of batteries:

Press the battery compartment switch with finger then pull it outwards to open the battery compartment, put three AAA batteries according to positive/negative poles inside the battery compartment, and make sure the switch pull plate position on the handle coincides with the switch handle position inside battery compartment, and then put battery cover to close battery compartment.

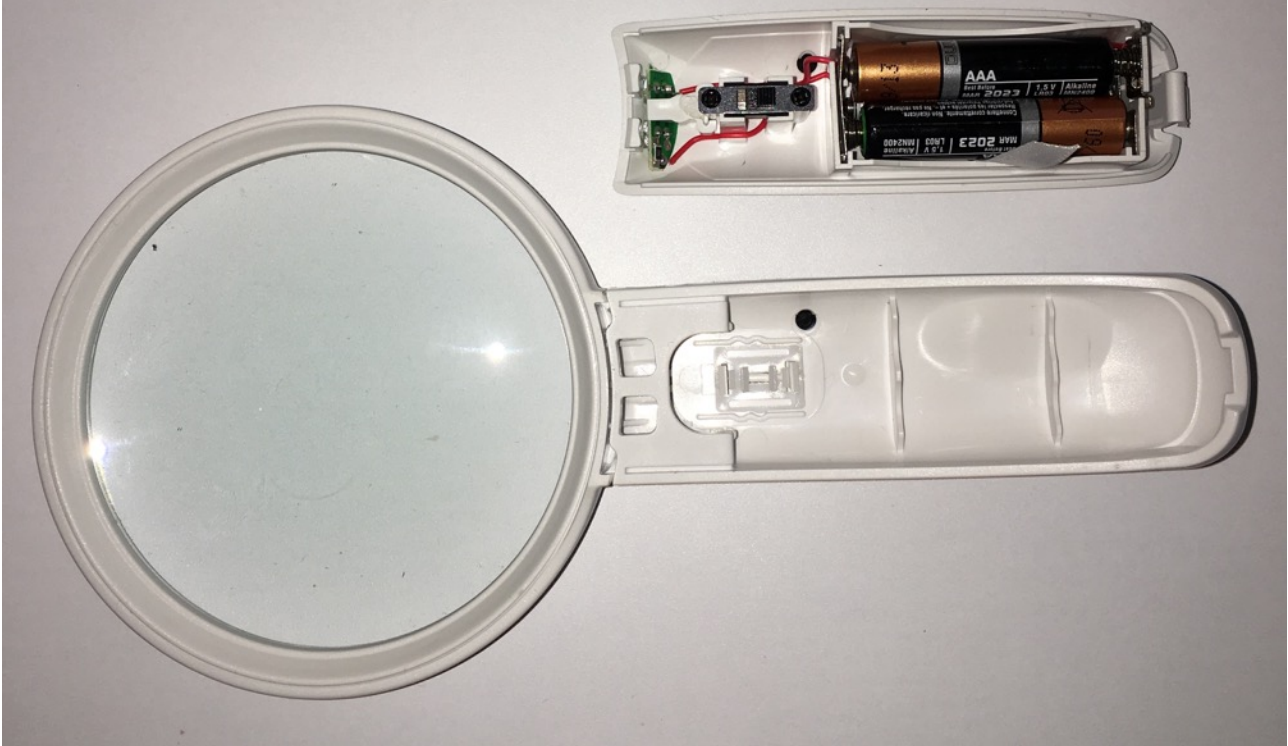


#### Precautions:

1. Don't drop the magnifier from high places to avoid fierce impact.
2. Don't use it to look at the sun for safety reason.
3. Don't put it in the sun for long time to avoid fire.
4. Please wipe it with soft cloth or paper for any dirt.
5. Please do not use gasoline, alcohol, banana water chemical contact magnifier.

Patented Product Counterfeiting will be sued.  
Application NO. of Exterior Design Patent: 201330643899.5

Open the back of the handle to insert 3 AAA batteries



Now replace the cover and your ready to magnify with amazing LED light

