




3. Getting Started with Cura

Written By: Printrobot Support

Step 1 — DOWNLOAD CURA



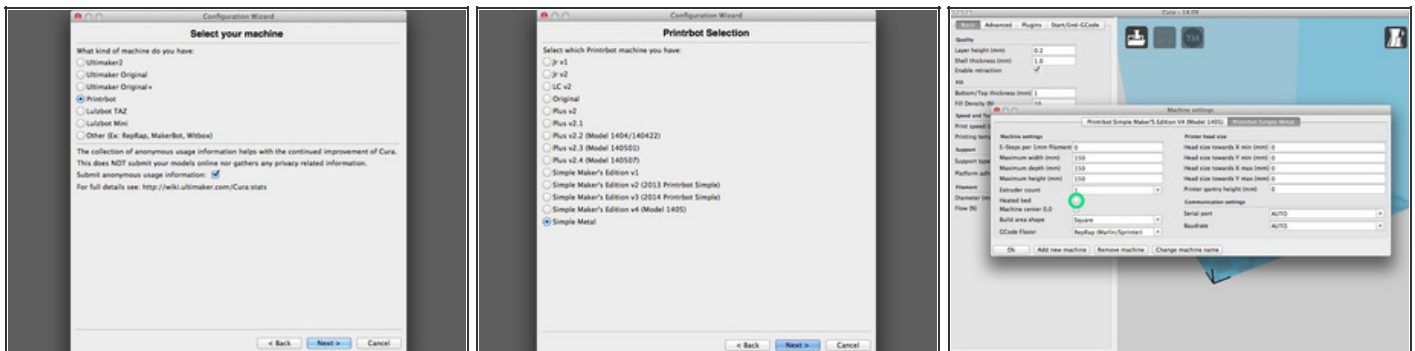
- Download Cura at: <http://software.ultimaker.com>
- WINDOWS 8.1 USERS: Microsoft has released signed drivers to recognize your Printronix.
 - For other versions of Windows, download the required USB driver from http://pjrc.com/teensy/serial_install.ex..., right click on it and “Run as Administrator” to install the INF file.
 - Windows 8 users – if you are still having trouble, [click here](#).
- Take a moment to disable the "sleep" settings on your computer. This will help you to avoid frustration later on. If your computer goes to sleep while printing via USB connection, the print will halt and fail. 

Step 2 — POWER ON AND CONNECT



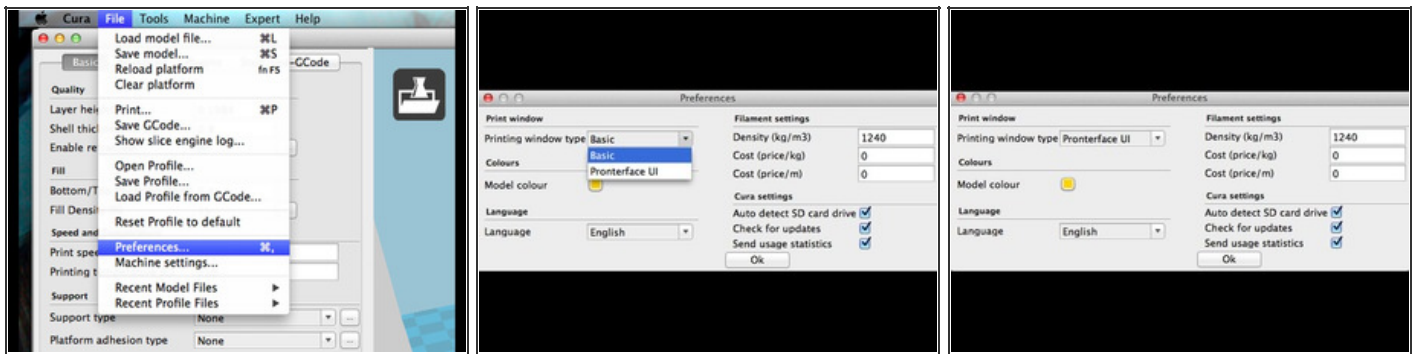
- Power on your Printrbot by connecting your laptop power supply to a wall outlet, and then plug the opposite end into the power harness of your Printrbot.
- Connect the mini-USB cable to the USB port on your Printrbot, and then the opposite end into the USB port on your computer.

Step 3 — CONFIGURATION WIZARD



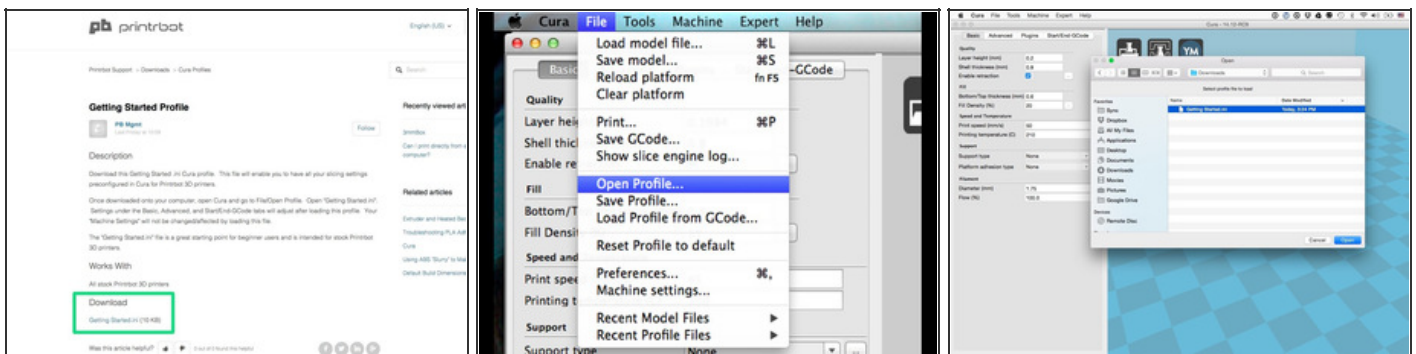
- After downloading Cura, open the program to begin the Configuration Wizard.
- First, select "Printrbot".
- Next, select the specific model that you are working with. For this example, we will be using the Simple Metal.
 - Select "Heated Bed" if you are using a heated bed on your Printrbot.
- After completing the Setup Wizard, the "Printer Settings" window will appear. You can access these figures at any time by clicking on the "Machine" tab at the top of the screen. Select "Machine Settings" to, change your print volume, connection settings, add a new machine, and more.

Step 4 — SELECT PRONTERFACE UI



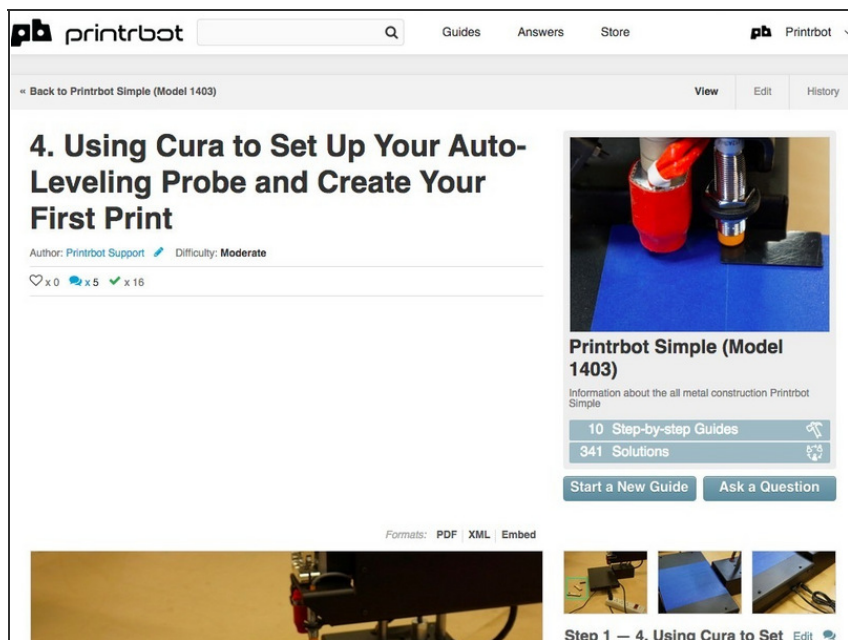
- Select "Preferences" under "File".
- Change "Printing widow type" in Preferences from Basic to Pronterface UI. Then click "Ok".

Step 5 — LOAD CURA PROFILE



- [Click here](#) to download the "Getting Started Profile" from the [Printrobot Knowledge Base](#). This ini file will configure your print settings. These settings are approved by Printrbot as a great starting point for all users.
- Once the profile has been downloaded, load the "Getting Started.ini" into Cura by selecting File/Open Profile. Open the ini file from your hard drive.

Step 6 — NEXT STEPS



The screenshot shows the Printbot website interface. At the top, there is a navigation bar with the Printbot logo, a search bar, and links for Guides, Answers, and Store. Below the navigation bar, there is a breadcrumb trail: « Back to Printbot Simple (Model 1403). The main content area features a large heading: "4. Using Cura to Set Up Your Auto-Leveling Probe and Create Your First Print". Below the heading, it says "Author: Printbot Support" and "Difficulty: Moderate". There are also icons for likes (x0), views (x5), and shares (x16). To the right of the text is a thumbnail image of a 3D printer's auto-leveling probe. Below the thumbnail, the text reads "Printbot Simple (Model 1403)" and "Information about the all metal construction Printbot Simple". There are two statistics: "10 Step-by-step Guides" and "341 Solutions". At the bottom of the main content area, there are two buttons: "Start a New Guide" and "Ask a Question". Below this, there are format options: "Formats: PDF | XML | Embed". At the very bottom, there is a large image of a 3D printer and a small thumbnail labeled "Step 1 — 4. Using Cura to Set Up Your Auto-Leveling Probe and Create Your First Print".

- Great job!
- **NEXT STEPS:**
 - CALIBRATE YOUR Z PROBE:
[Click here follow the next guide, "Using Cura to Set Up Your Auto-Leveling Probe and Create Your First Print".](#)
 - To access the official Cura manual, [click here](#).

This document was last generated on 2015-02-18 11:56:51 PM.