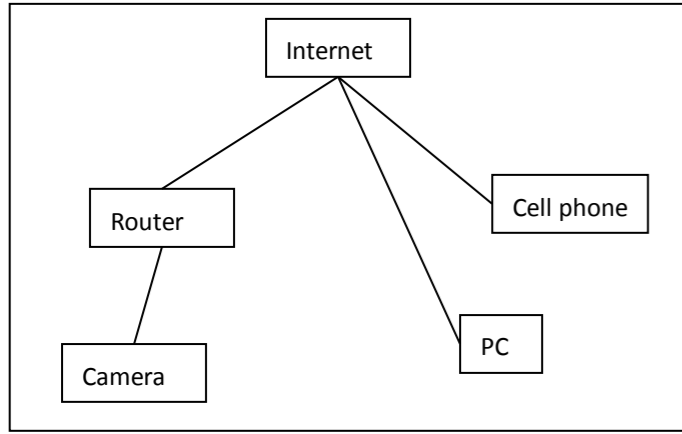
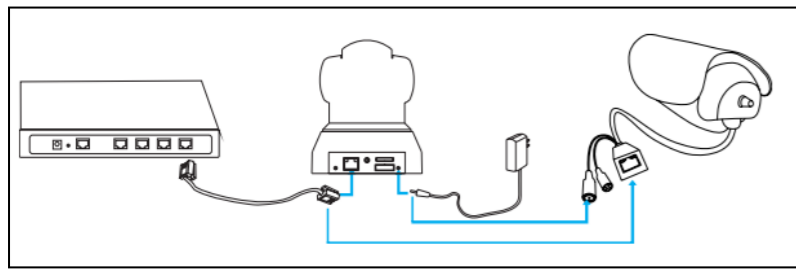


How It Works?



The IP camera can be connected to a router either wired (Ethernet cable) or wireless (Wi-Fi). Then the router connects to the outside world via internet. This will enable your PC/Mac, tablet, smart phone or other devices to see video feeds from your IP camera.

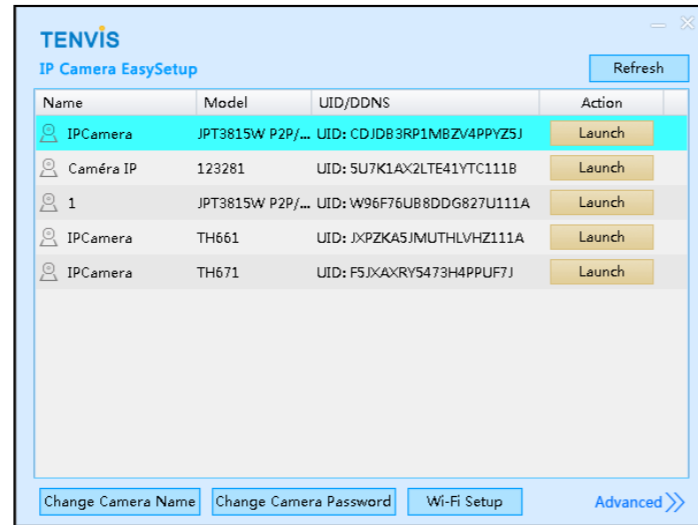
Hardware Installation



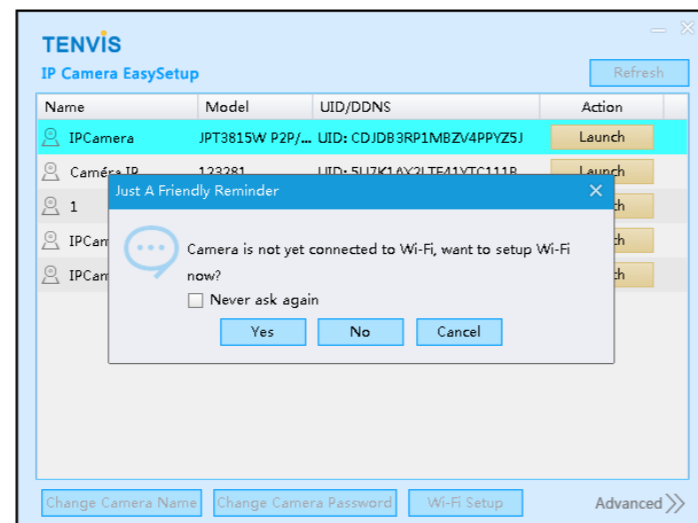
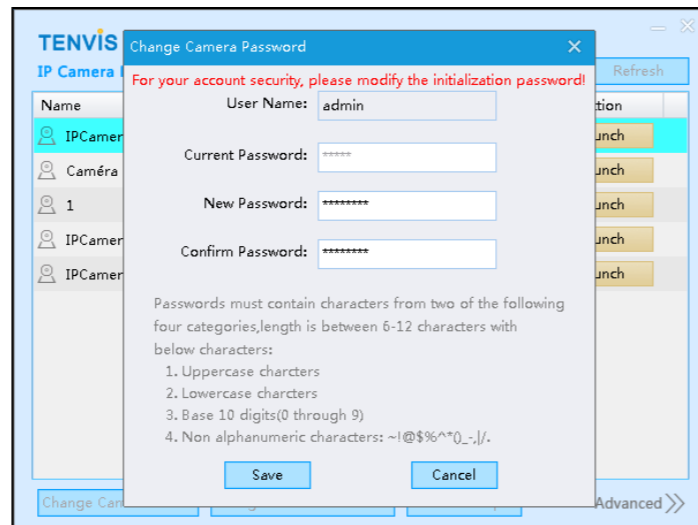
Connect the power cable and wait for camera to boot up, and then connect the camera to router via Ethernet cable (included).

Setup via PC

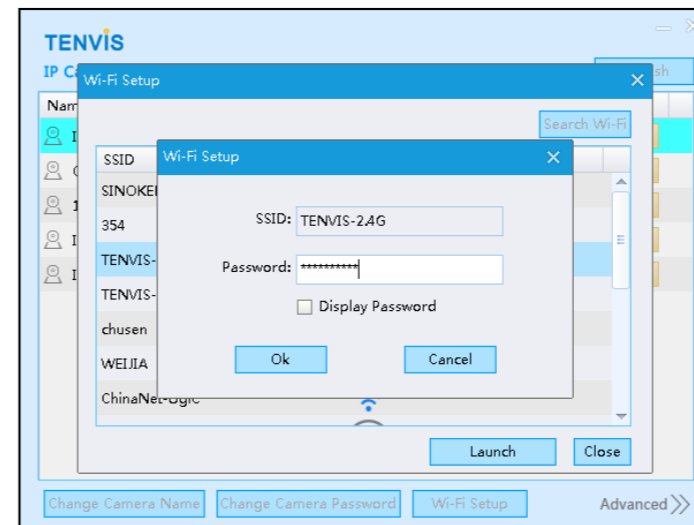
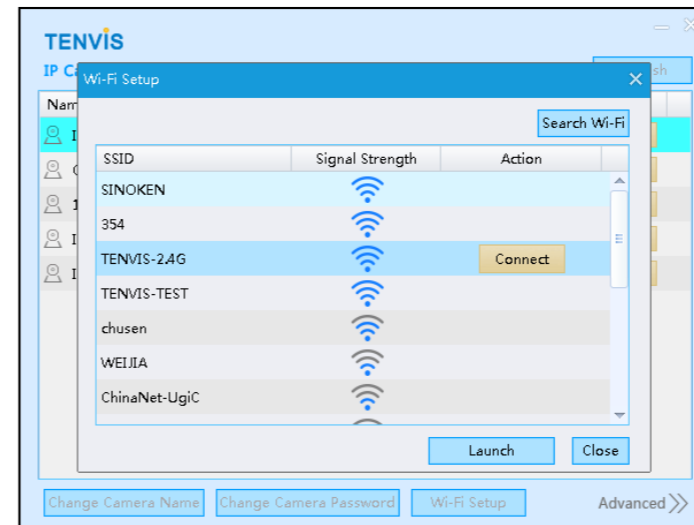
- 1. Software Installation:** Install TENVIS EasySetup from CD or download and install from <http://www.tenvis.com/download>.
- 2. Select Camera:** After installation, launch TENVIS EasySetup application, it will start searching IP cameras in your local network automatically. Identify the camera by its UID at the bottom of the camera and then go to next step;



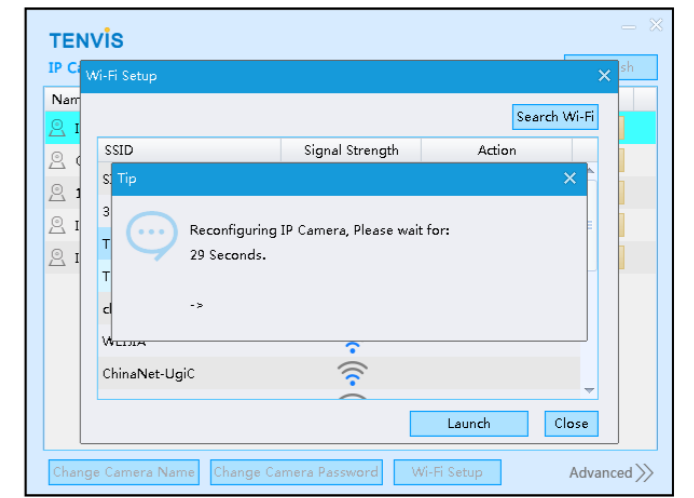
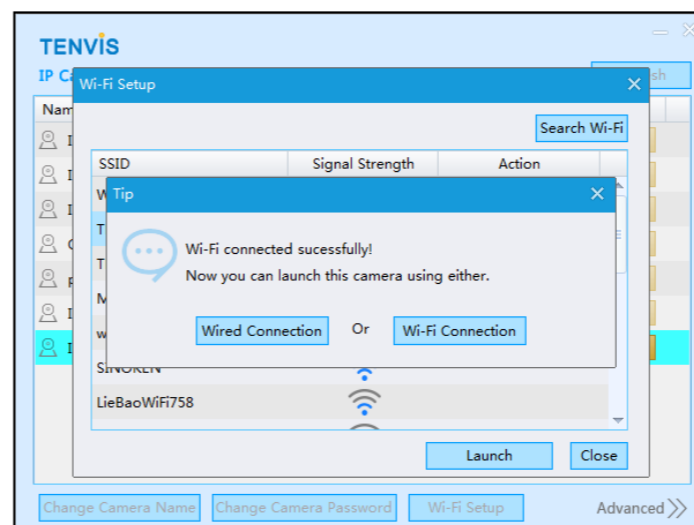
- 3. Change Password:** For security considerations, TENVIS Easysetup will prompt you to change password if camera uses with factory default password "admin".



- 4. Wi-Fi Setup:** If no wireless network has been setup for your IP camera, the popup window will remind you to setup WiFi, click **Yes** and follow the on-screen instructions to setup wireless network.



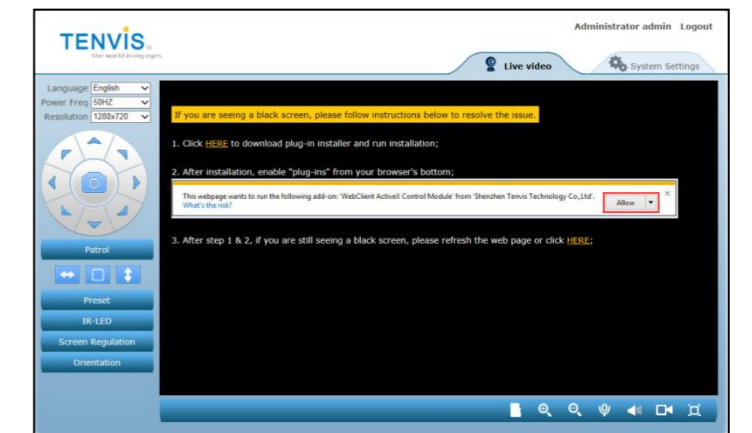
- 5. Wired or Wireless:** Please choose either wired connection or Wi-Fi connection for your camera, if you choose **Wi-Fi Connection**, follow the on-screen instructions to unplug the network cable between router and IP camera and wait several 30 seconds for camera's reconfiguration.



- 6. View Camera feeds:** to view the live video, please click **Launch** after setup, you will be required to enter Username and Password for your IP camera, please enter the default Username **admin** and your new password.



- 7. Browser Plug-in:** Click **Allow** button to enable plug-in or follow the instruction to download and enable plug-in, and then refresh the page to stream video feeds from your IP camera to your PC/Mac internet browser;





Operation APP

1. Download NEW TENVIS in the App Store or Google Play Store, or scan bellow QR code to download & install NEW TENVIS directly.



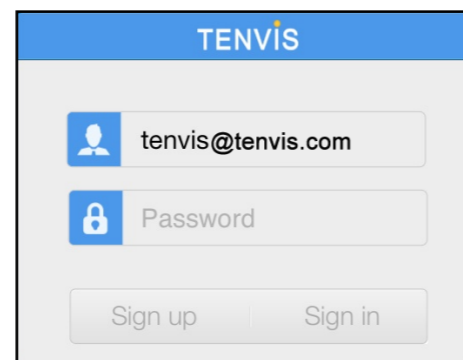
iOS



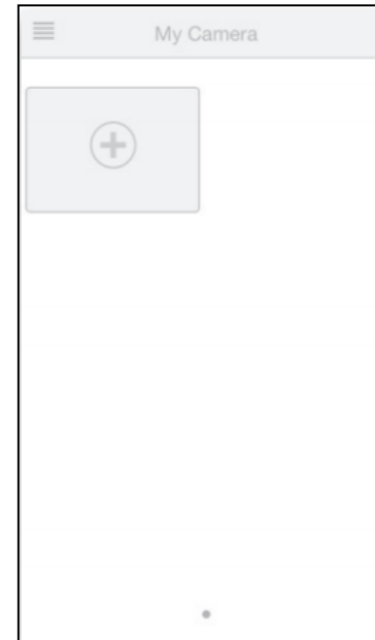
Android

2. Select **Sign up** if you do not already have a TENVIS account. Fill out the required information to register a New TENVIS user account.

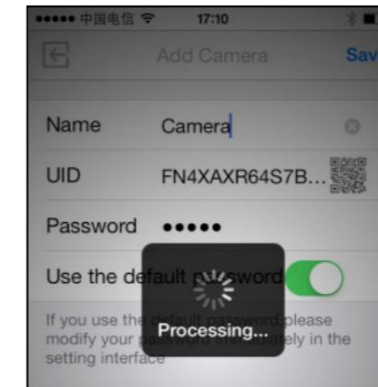
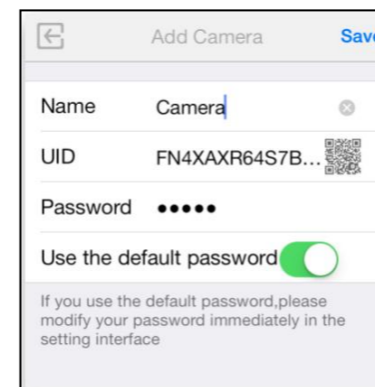
3. Once registered, you are ready to logon to your account.



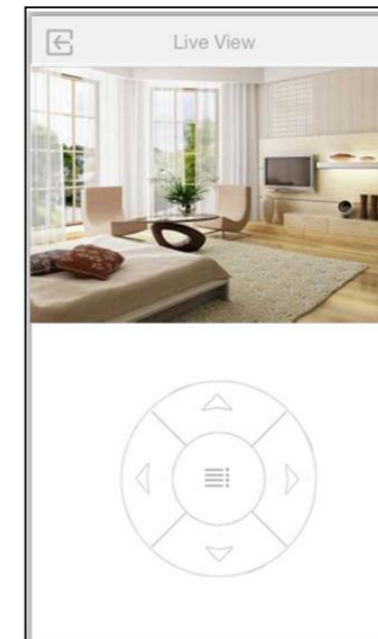
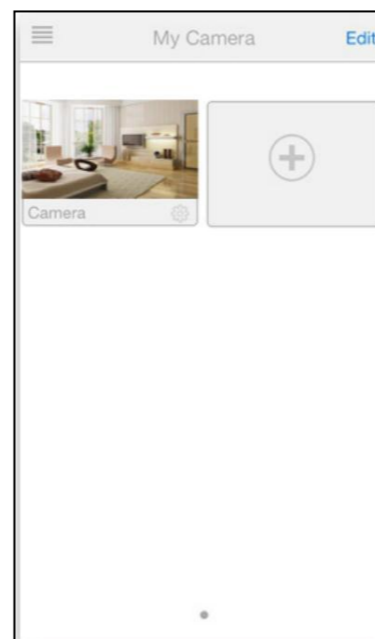
4. Tap **Add icon** to add your new IP camera to your account; find the IP camera by matching the camera's UID in the list to the UID code displayed at the bottom of the camera. If the new camera is on the same Local Area Network, its UID code will be display on the IP camera list.




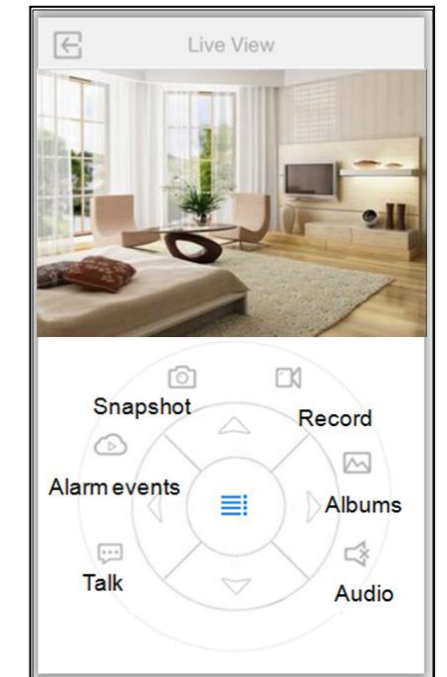
5. Enter the camera's name and password.



6. Select the camera you have just added and start viewing your camera's live video feed!

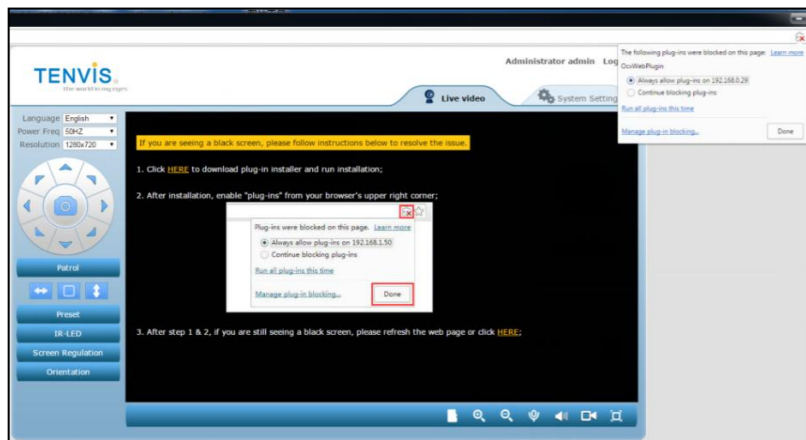


7. Tap on  to display additional functions :

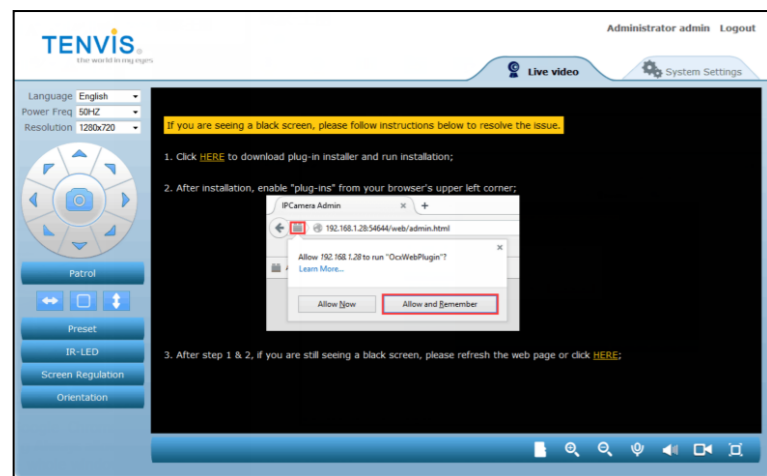


- Pan/tilt control: 4 directions pan/tilt control.
- Talk: Allows user to talk to the camera from App.
- Alarm Events: Setup alarm events;
- Snapshot: Take a snapshot picture from current camera feed;
- Albums: View the snapshots taken.
- Audio: Allows user to listen to the camera's audio feed.

Tips: If your web browser is Google Chrome, please allow the plug-in by clicking **Always allow plug-ins on xxx** and **refresh** the whole window to view live video feed.



Tips: If your web browser is Firefox, please click **Activate OcxWebPlugin** and select **Allow and Remember** to allow the plug-in. Then **refresh** the whole window to get live video feed.



Contact Us

TENVIS Technology Co., Ltd

Website: www.tenvis.com

E-mail: support@tenvis.com

Hotline: (714)455-2958

US Distributor

Website: www.zettaguard.com

E-mail: info@zettaguard.com

Hotline: (714)455-2958