

Economy 6/3 Frame Hand Crank Extractor & Easy Extractor Combo Unit

HH-160 & HH-162

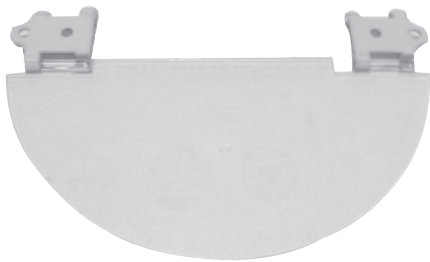


MANN LAKE
WE KNOW BEES

501 1st St S, Hackensack, MN 56452
500 Santa Anita Dr., Woodland, CA 95776
485 Stewart Rd, Wilkes-Barre, PA 18706
1600 Commerce Street, Marshall, TX 75672

Telephone: 800-880-7694
www.mannlakeltd.com

Congratulations on purchasing your new extractor. Shown below are just a few things you need to do before you begin extracting. If you have any difficulty with assembly or if you have any questions at all, please feel free to contact your nearest Mann Lake location. Experienced help is only a phone call away.



Step 1- Remove the brackets from the extractor and place on a level surface. The flat side of the brackets face each other. Place the first half of the lid into the brackets and slide into place.



Step 2- Flip the brackets into an upward position. Lower the brackets into place over the bolt and secure with the washer and nut.



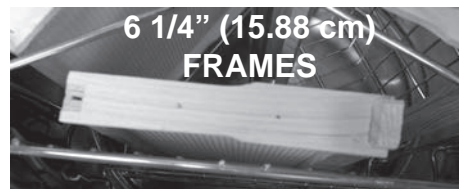
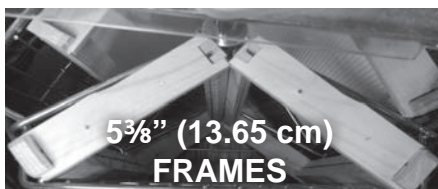
Step 3- On the opposite side, place the lid into the brackets and slide into place.



Step 4- Put the hex bolt through the hole in the knob and attach to the crank handle. Tighten with allen wrench that is provided.

If you have purchased the optional stand or the extractor combo, you will need to place the extractor into the opening created by the 3 legs. It will be a snug fit so no hardware is used to attach the stand to the extractor. The stand "feet" have a hole that can be used to mount the extractor to the floor or a platform. A 4' x 4' (121.92 cm x 121.92 cm) sheet of plywood works well when you are extracting. You will stand on the plywood which will steady the extractor as you crank.

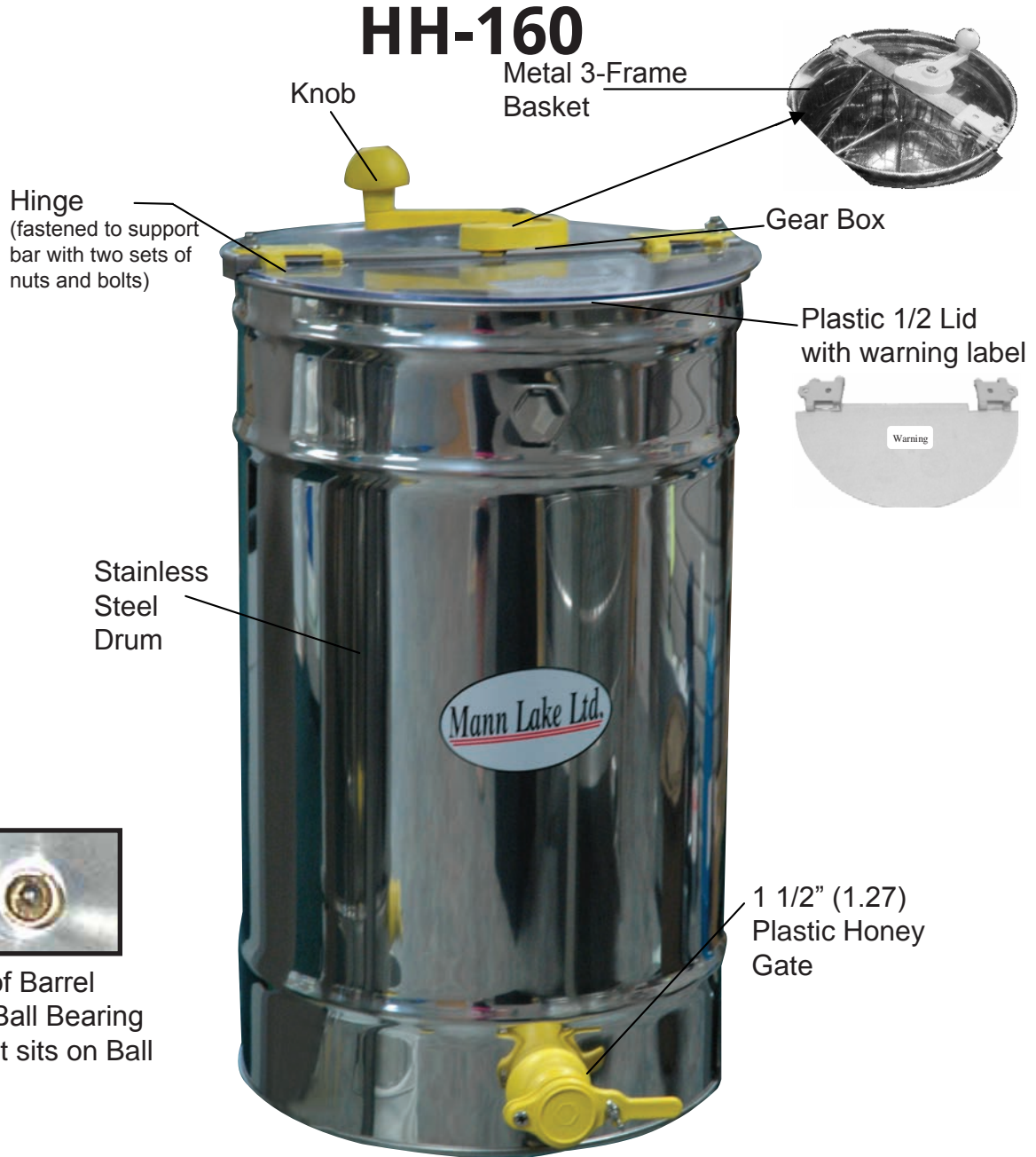
Frames should be uncapped prior to extracting. When extracting 9 1/8" (23.18 cm) or 6 1/4" (15.88 cm) frames with wax foundation, the frames will need to be rotated during extraction. Extract side one approximately 50%, turn the frame to side 2, extract 100%, then return to side one and extract the remaining 50%. Rotating the frame will lessen the occurrence of blowouts in the foundation from the weight of the honey. If plastic foundation is used, it is possible to extract each side 100% before turning. 5 3/8" (13.65 cm) frames are placed radially as shown below. It is not necessary to turn frames placed radially.



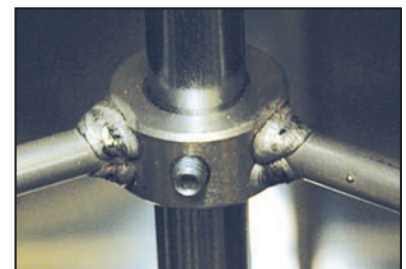
Keep your honey gate open to ensure basket moves fully. Extractors are not intended for use as storage containers. Promptly transfer all honey from the extractor to a storage or bottling unit.

Extractor

HH-160



Finally, the basket is supported by allen screws located along the shaft at the top and bottom of the basket. Be sure to tighten these screws prior to using. If at any time the shaft spins but the basket does not, you will need to tighten them again.





HH-160 Extractor

Part List



PART	IN	ON	PACKED SEPARATELY OR FOAM
1- Stainless Steel Drum		X	
1- 6/3 Frame Welded Metal Basket	X		
HH-805 1- Handle	X		
HH-805 1- Gear Box		X	
HH-805 1- Knob		X	
1- Bolt For Handle	X		
HH-800 2- 1/2 Circle Plexiglas Lid with ***Caution Label***			X
HH-810 2- Hinges		X	
4- Flang Nuts 8mm For Hinges		X	
4- Bolts Metric 8x20 For Hinges		X	
HH-606 1- Honey Gate		X	
36-123 6 MM Allen Wrench	X		
36-122 3 MM Allen Wrench	X		
80-001 Large Oval Mann Lake Label		X	
Shaft	X		
2- Screws to Hold Basket to Shaft 5/16	X		
5/16 Ball Bearing	X		
Instruction Sheet	X		
INSPECTED BY- _____			

One Year Limited Warranty: Mann Lake warrants this product, to original purchaser, for one year from purchase date to be free of defects in materials and workmanship. This warranty is the only written or express warranty given by Mann Lake ALL IMPLIED WARRANTIES OF MERCHANTABILITY AND OF FITNESS ARE HEREBY EXCLUDED. Mann Lake's obligation under this warranty is limited to repair or replacement of the product, at its option. IN NO CASE SHALL MANN LAKE BE LIABLE FOR ANY INCIDENTAL OR CONSEQUENTIAL DAMAGES FROM BREACH OF THIS WARRANTY.

IMPORTANT

Special Safety Instructions

(Lid Attachment)



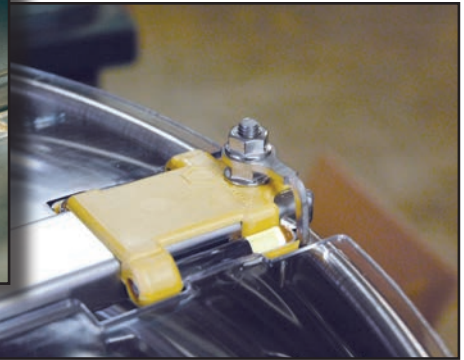
When you put the lid on the extractor you must be able to read the embedded writing on the lid (or warning label if applied). **STEP 1-** Hold the lid at a 45 degree angle. **STEP 2-** Place the plastic tees down on the right sides of the hinge. **STEP 3-** Slide to the left so that the left side of the tee goes in the secured bracket. Once it is secured you should be able to lay the lid down. **CAUTION:** While the lid is down the clear plastic should not be overlapping any part of the yellow hinge on either side.



STEP 1



STEP 2



STEP 3



CAUTION

Cleaning Instructions

Bottom of Barrel
(inside) Ball Bearing
The Shaft sits on Ball



To clean extractors, use warm to hot water with a soft cloth. Please do not use anything rough and abrasive on extractor. If the extractor is still not clean you may use a small amount of dish soap. There is no need to disassemble the extractor while cleaning it. If you feel the need to disassemble the extractor please be aware of the small ball bearing on the bottom of the extractor.