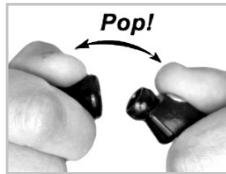


## Connecting the Plamp Clip to your Plamp

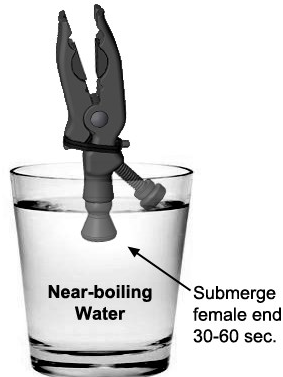
1. Remove the old clip end from the Plamp by firmly grabbing the Loc-Line® segment *next* to the end segment that is attached to the clip. Bend it sharply until the segments pop apart (do not worry, you will not hurt the Plamp).



2. To attach the new clip, forcefully press it onto the segment that was previously attached to the old clip. It should snap into place with an audible “pop”. It takes a substantial amount of pressure to make this happen. It helps to place your fists between your knees, holding the mating pieces as close to the connecting joint as possible. Squeeze your knees together forcefully as you force the joints together with your hands. If you are still having difficulty you can heat up the female socket to facilitate the process (details below).

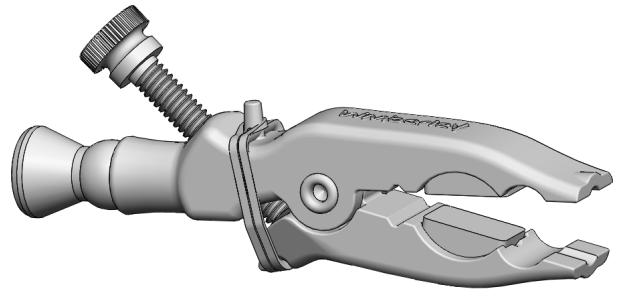
### Heating the female socket:

Heat some water to boiling or near-boiling temperature. Warm the female end of the segment for 30-60 seconds in the hot water. Connect the segments by pushing them together. Use the knee-squeezing technique mentioned above if needed. The segments should pop into place fairly easily.



# Wimberley

## PP-211 The Plamp II Thumbscrew Clip



### Package Contents:

- The Plamp Clip (Qty 1)

Made in USA

**Wimberley, Inc.**

1750 Broadway St  
Charlottesville, VA  
22902 USA

Phone: 1-434-529-8385

Toll Free: 1-888-665-2746 (USA & Canada)

www.tripodhead.com info@tripodhead.com

5 Year Warranty – See [www.tripodhead.com/warranty.cfm](http://www.tripodhead.com/warranty.cfm) for complete details

## The Plamp Clip

**Thumbscrew** Turn the thumbscrew to open or close the jaws of the clip. Compared to typical spring-activated clips, thumbscrew activated clip jaws allow for more finesse when holding delicate objects, as well as much higher maximum clamping force when desired.

### Clip Body

The clip is custom designed to hold anything from the most delicate plant stems to heavy reflectors and diffusers. It is made of nearly unbreakable ST Nylon

### Jaw opening band

This elastomer band puts tension on the clamp's moving jaw so that it opens when you loosen the thumbscrew. It is made of weather/UV resistant EPDM

### Arched Recess

reliably grip cylindrical objects such as small flashlights and branches.

### Foam Jaw Inserts

Grip delicate objects without damage.



## Important Feature

### Reflector/Diffuser Notches

Special notches in the clip's jaws grab the steel rim on reflectors and diffusers, providing a secure, slip-free attachment (applies to typical cloth reflectors/diffusers with steel perimeter hoop). This new feature is a drastic improvement over other clips currently on the market.

The firm grip allows you to make precise adjustments to the angle of a reflector. You can even hold diffusers cantilevered straight out above your subject

