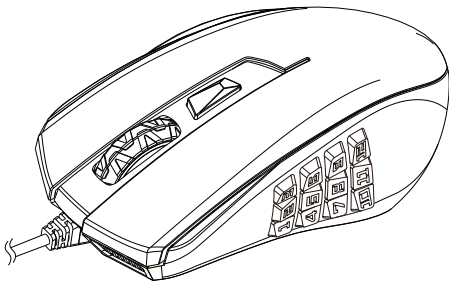


amazonbasics



Gaming Mouse with 12K DPI Optical Sensor
Souris de Jeu avec Capteur Optique 12K DPI
Gaming-Maus mit Optischem 12K-DPI-Sensor
Mouse da Gioco con Sensore Ottico 12K DPI
Ratón de Juego con Sensor Óptico 12K DPI
Gamingmuis met 12K DPI Optische Sensor
ゲーミングマウス、12K DPI オプティカルセンサー

B07WDW8DD3

English	3
Français	18
Deutsch	32
Italiano	45
Español	58
Nederlands	72
日本語	85



IMPORTANT SAFEGUARDS



Read these instructions carefully and retain them for future use. If this product is passed to a third party, then these instructions must be included.

When using electrical appliances, basic safety precautions should always be followed to reduce the risk of fire, electric shock, and/or injury to persons including the following:



DANGER **Risk of suffocation!** Keep any packaging materials away from children – these materials are a potential source of danger, e.g. suffocation.



WARNING Avoid looking directly into the LED light beam.

Explanation of Symbols



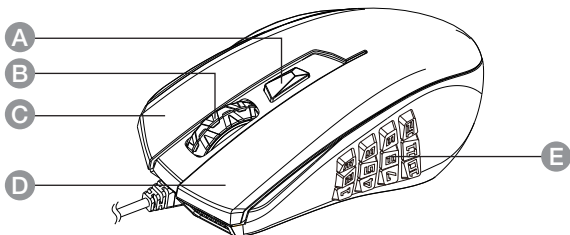
This symbol stands for “Conformité Européenne”, which means “Conformity with EU-directives”. With the CE marking the manufacturer confirms that this product complies with applicable European directives and regulations.



DC (direct current).



Product Description



- A Multifunction button (Default: DPI)
- B Scrolling wheel/Middle button
- C Right button
- D Left button
- E Thumb buttons (keypad)



Installation

NOTICE

This product is a plug-and-play device and for basic operation does not require installation of any drivers or software. To gain full functionality of the product, install the below software (PC only).

- Connect the USB plug to the USB port of your computer. The computer detects the mouse automatically.

- Download the software:

AmazonBasics MMO GAMING MOUSE

from www.amazon.com/dp/B07WDW8DD3

- Open the setup file and follow the on-screen installation steps.
- When the installation is completed, confirm and restart the computer.
- After the restart, the AmazonBasics Gaming icon is shown in the right side of the task bar.

NOTICE

If Windows® Defender alerts you that the software is from an insecure or unknown source, install the software anyway.

Configuration

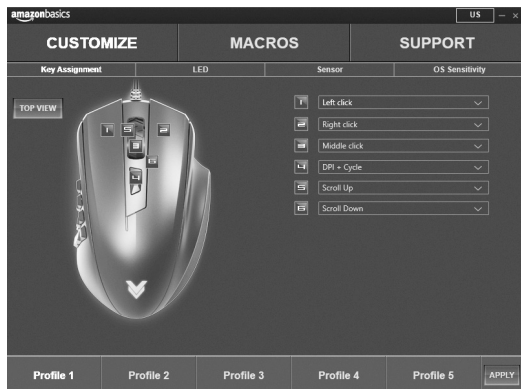
Language section

Change the language by clicking on the country code located in the top right corner.

Profile management

Profiles let you organize all the custom settings. You can save up to 5 profiles. Profile can be selected either by clicking on the **Profile** bar at the bottom of the window or by pressing the multifunction button on the mouse.

Customizing button functions



- Click **CUSTOMIZE**, then **Key Assignment**, to choose the actions for the buttons and the scroll wheel.
- To reassign the button, click on the bar next to the particular button number and choose the desired function.
- To confirm the settings, click **APPLY**.

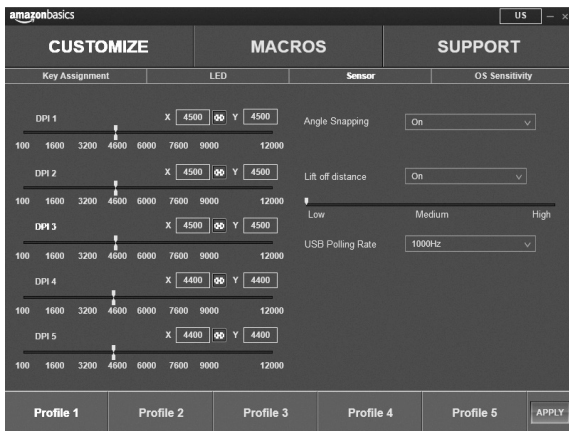
Backlights settings



- Click **CUSTOMIZE**, then **LED**, to set the 3 LED zones to individual style and color (e.g. speed, brightness, mode).
- To confirm the settings, click **APPLY**.

Sensor Settings

Sensitivity (DPI)



The DPI level defines the correlation between the physical movements of the mouse and the consequent movement of the cursor (on screen).

- Click **CUSTOMIZE**, then **Sensor**, to define the mouse sensitivity (DPI).
- To confirm the settings, click **APPLY**.

DPI level	Cursor speed
Low DPI	Precise and slow
High DPI	Fast

Angle snapping

Angle snapping predicts when you want to make a straight line, and artificially keeps the mouse pointer going in a straight line on the screen, even though your actual movements are not straight at all.

Lift off distance

Lift off distance (LOD) determines the distance you can lift the mouse before it stops tracking.

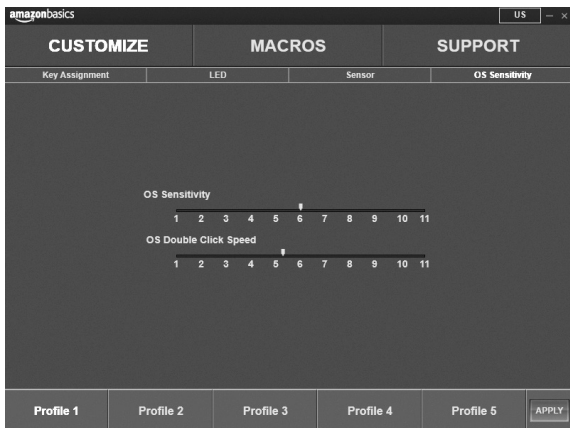
USB Polling rate

Polling rate (or report rate) determines how often your mouse sends information to your computer.

NOTICE

Some USB hubs may decrease the product's polling frequency. If you experience decreased performance, plug the product directly into the USB port of your computer.

OS Sensitivity



- Click **CUSTOMIZE**, then **OS Sensitivity**, to adjust the response time of the operating system.

OS Sensitivity

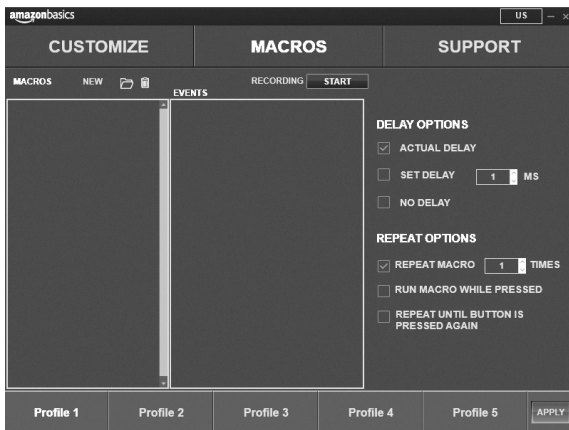
- | | |
|-------|---|
| 1 | High sensitivity - cursor moves pixel by pixel. |
| <hr/> | |
| 11 | Low sensitivity - cursor moves every 11 pixels. |

OS Double Click speed

- | | |
|-------|--------------------------|
| 1 | Slow double-click speed. |
| <hr/> | |
| 11 | Fast double-click speed. |

- To confirm the settings, click **APPLY**.

Macros



The macro manager allows you to create numerous series of actions assigned to a particular button.

Click **MACROS** to open the macro manager.

Recording a new macro

1. Click **NEW** to create a new macro placeholder and name it.
2. Click **START** and start recoding a combination.
The recorded combination is displayed in the designated window.
3. Click **STOP** to stop the recording.

4. Choose between the additional options.

Delay options

Actual delay	The action are reproduced exactly with the same delay as they were recorded.
Set delay	The delay between keystrokes and button presses is predefined and fixed (expressed in milliseconds).
No delay	The recorded actions are executed with no pauses between keystrokes and button presses.

Repeat options

Repeat macro X times.

Run macro when clicked on.



Repeat until button is clicked on again.

To confirm the settings, click **APPLY**.

Load/remove Macros

- The created macros are saved in the users default document folder:

user/document/mouse...

- To load macros, click on the folder .
- To remove macros, click on the bin .



Cleaning and Maintenance

NOTICE During cleaning do not immerse the product in water or other liquids. Never hold the product under running water.

Cleaning

- To clean the product, wipe with a soft, slightly moist cloth.
- Never use corrosive detergents, wire brushes, abrasive scourers, metal or sharp utensils to clean the product.

FCC – Supplier's Declaration of Conformity



Unique Identifier	B07WDW8DD3 Gaming Mouse with 12K DPI Optical Sensor, Backlights, and Thumb Buttons
Responsible Party	Amazon.com Services, Inc
U.S. Contact Information	410 Terry Ave N. Seattle, WA 98109, United States
Telephone Number	(206) 266-1000

FCC Compliance Statement

1. This device complies with Part 15 of the FCC rules. Operation is subject to the following two conditions:
 - (1) this device may not cause harmful interference, and
 - (2) this device must accept any interference received, including interference that may cause undesired operation.
2. Changes or modifications not expressly approved by the party responsible for compliance could void the user's authority to operate the equipment.

FCC Interference Statement

This equipment has been tested and found to comply with the limits for a Class B digital device, pursuant to part 15 of the FCC Rules. These limits are designed to provide reasonable protection against harmful interference in a residential installation. This equipment generates, uses and can radiate radio frequency energy and, if not installed and used in accordance with the instructions, may cause harmful interference to radio communications. However, there is no guarantee that interference will not occur in a particular installation. If this equipment does cause harmful interference to radio or television reception, which can be determined by turning the equipment off and on, the user is encouraged to try to correct the interference by one or more of the following measures:

- Reorient or relocate the receiving antenna.
- Increase the separation between the equipment and receiver.
- Connect the equipment into an outlet on a circuit different from that to which the receiver is connected.
- Consult the dealer or an experienced radio / TV technician for help.

Canada IC Notice

- This Class B digital apparatus complies with Canadian CAN ICES-3(B) / NMB-3(B) standard.

Disposal




The Waste Electrical and Electronic Equipment (WEEE) Directive aims to minimise the impact of electrical and electronic goods on the environment, by increasing re-use and recycling and by reducing the amount of WEEE going to landfill. The symbol on this product or its packaging signifies that this product must be disposed separately from ordinary household wastes at its end of life. Be aware that this is your responsibility to dispose of electronic equipment at recycling centers in order to conserve natural resources. Each country should have its



collection centers for electrical and electronic equipment recycling. For information about your recycling drop off area, please contact your related electrical and electronic equipment waste management authority, your local city office, or your household waste disposal service.



Specifications

Power source:	5 V  USB port, 250 mA
Sensor:	Optical 12000 DPI
Sensitivity range:	100–12000 DPI
USB polling rate:	1000 Hz
Acceleration:	50 g
Compatibility:	Windows® 7/8/8.1/10
Cable length:	6 ft (1.8 m)
Dimensions (L x W x H):	4.83 x 2.98 x 1.72" (123 x 76 x 44 mm)
Net weight:	approx. 4.76 oz (135 g)



Feedback and Help

Love it? Hate it? Let us know with a customer review.

AmazonBasics is committed to delivering customer-driven products that live up to your high standards. We encourage you to write a review sharing your experiences with the product.

US: amazon.com/review/review-your-purchases#



UK: amazon.co.uk/review/review-your-purchases#

US: amazon.com/gp/help/customer/contact-us



UK: amazon.co.uk/gp/help/customer/contact-us

amazonbasics

amazon.com/AmazonBasics

MADE IN CHINA
FABRIQUÉ EN CHINE
HERGESTELLT IN CHINA
PRODOTTO IN CINA
HECHO EN CHINA
GEMAAKT IN CHINA

中国製



V01-01/20