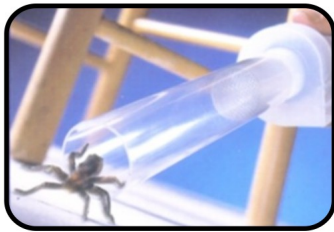




FOR SPIDERS AND OTHER CRAWLING BUGS:

1. Press button to start motor and approach the bug. When you get the end of the tube to within about one inch the bug should be sucked up at great speed.
2. Turn the BugBuster upright so the open end is pointing upwards. The spider can't crawl out, but for extra security replace the cover.
3. Take the bug as far away as you want and remove cap. Invert the tube at arm's length near the ground to allow the spider to escape.



FOR WASPS, BEES, FLIES, ETC.:

1. Wait until the insect approaches a window and starts to "hover".
2. Remove the cap and start the motor by pressing the "On" button.
3. When you get close enough the bug will be sucked rapidly into the tube.
4. Replace the cap and turn the motor off.
5. Take the bug outside and remove the cap to release at arm's length.

TO INSTALL OR REPLACE BATTERY

The BugBuster operates on one 9V battery (not included). To replace, remove the black cap on the end of handle by pulling the cap straight out.

A. Extract the battery connector and attach the battery. Insert the battery, connector first, into the cavity. The battery will protrude approximately ½ inch.

B. Replace the cap, ensuring that the wide slot on the cap is aligned with the two ridges visible on either side of the on/off button.



Distributed by
Sonic Technology Products, Inc.
P.O. Box 539
Grass Valley, CA 95945
1-800-247-5548
www.sonictechnology.com