



Beijing Tiertime Technology Co., Ltd

[youtube.com/c/UP3DPrinters](https://www.youtube.com/c/UP3DPrinters)

[facebook.com/up3dp/](https://www.facebook.com/up3dp/)

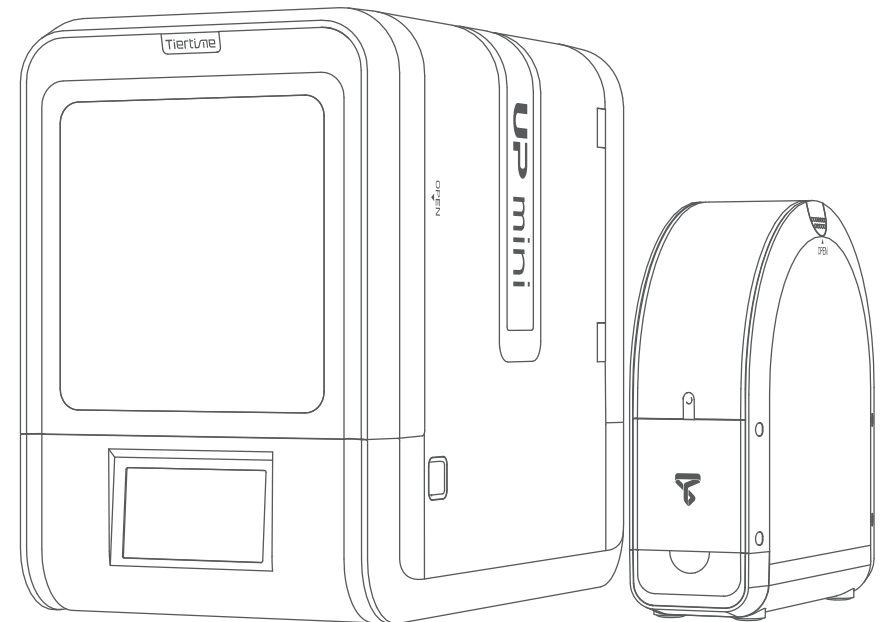
[instagram.com/up3dprinter/](https://www.instagram.com/up3dprinter/)

[twitter.com/UP3DP](https://twitter.com/UP3DP)

Support: [support@pp3dp.com](mailto:support@pp3dp.com) Web: [www.tiertime.com](http://www.tiertime.com) [www.up3d.com](http://www.up3d.com)

# UP mini 2 Quick Start Guide

V 0.1



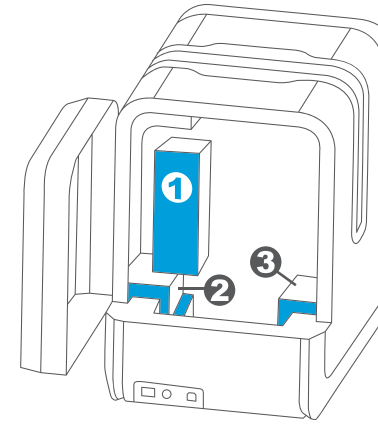
Download the full user manual at [www.up3d.com](http://www.up3d.com) -Support Section

# Index

Unpacking .....	1
Install Printer and UP Fila Station (spool holder) .....	2
Install Software .....	3
Load Filament .....	4/5
Setup Wi-Fi .....	6
Load and Print a 3D Model .....	7
Printer Activation .....	8

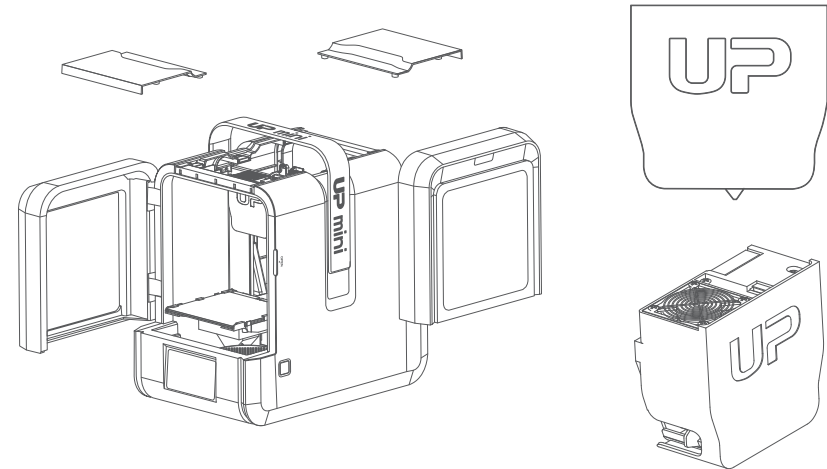
## Unpacking

1\ After unboxing the machine, remove the cushions inside the printer.



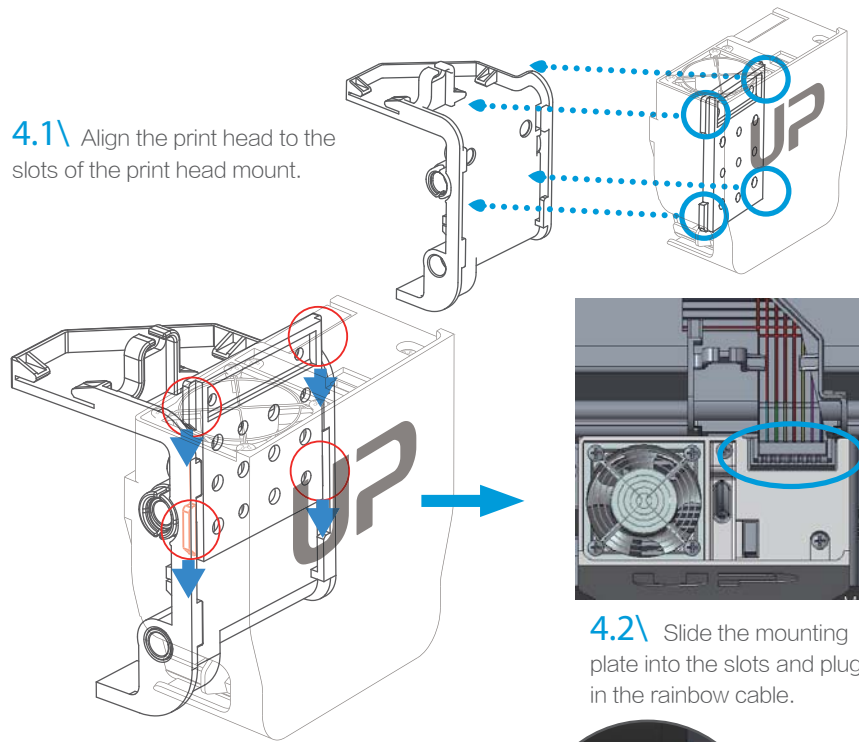
2\ Open the front door and remove the top lids.

3\ Find the print head in the accessory box.

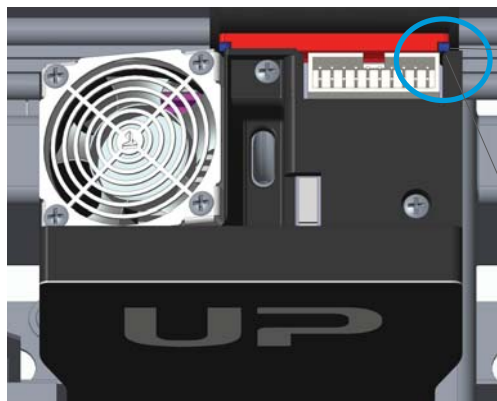


## Install Printer and UP Fila Station (spool holder)

4.1\ Align the print head to the slots of the print head mount.



4.2\ Slide the mounting plate into the slots and plug in the rainbow cable.



4.3\ The print head must be pushed to the bottom of the mount.

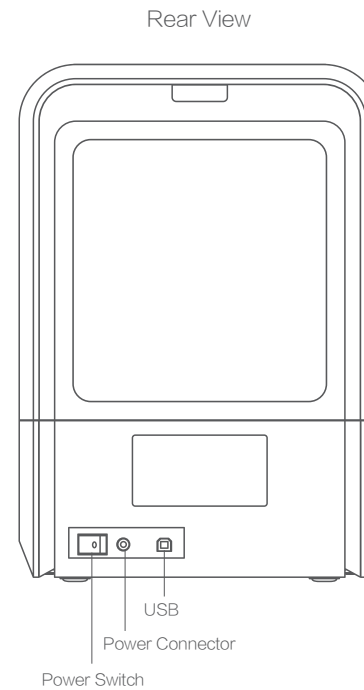
**Notice:** when installed correctly, the red and the blue parts should be at the same level.

## Install Software and Connect to Printer

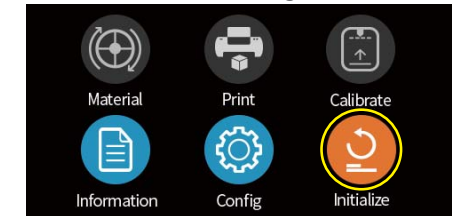
1\ Go to [www.up3d.com](http://www.up3d.com), download the latest UP Studio software and install it on your computer.



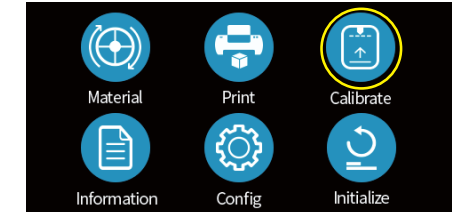
2\ Connect the printer to your computer.



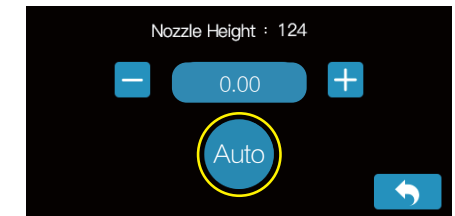
3\ Detect the nozzle height.



① Click the "Initialize" button to initialize the printer.



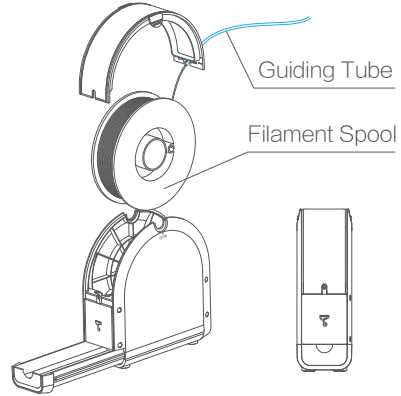
② Click the "Calibrate" button.



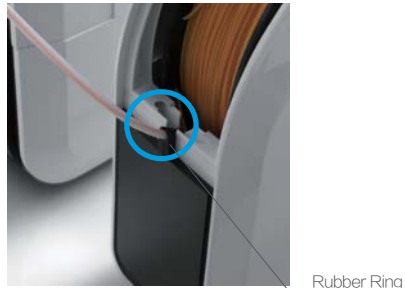
③ Click the "Auto" button to start the nozzle height detection.

# Load Filament

1\ Put the filament spool into the UP Fila Station, and insert filament into the guiding tube.



3\ Put the guiding tube into the rubber ring.

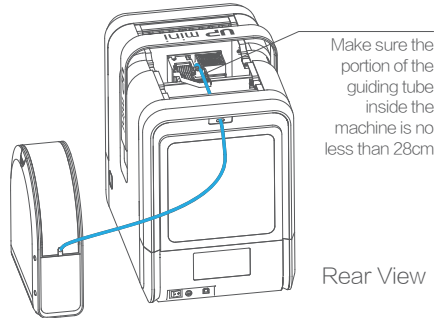


Rubber Ring

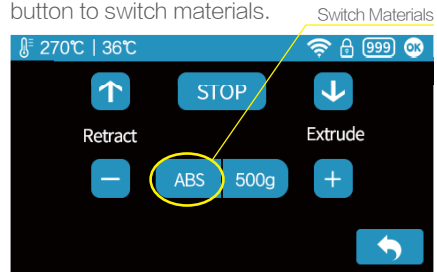


Rubber Ring

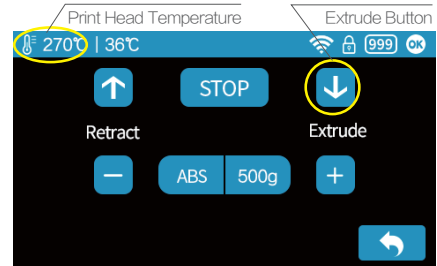
2\ Insert the filament and the guiding tube into the machine through the hole on the back door.



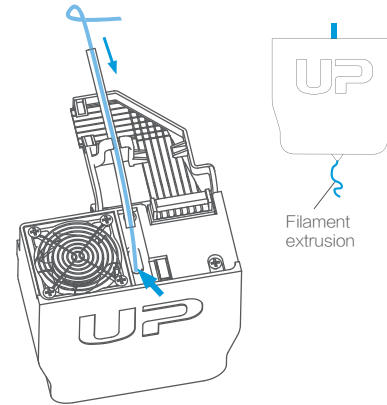
4\ In the material page, press the circled button to switch materials.



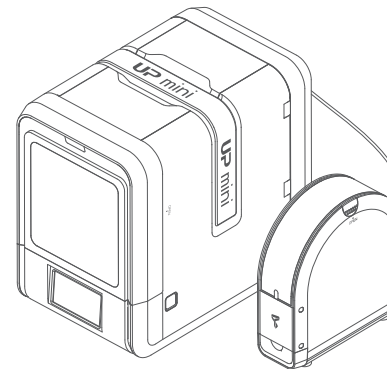
5\ Click the "Extrude" button, the print head temperature will be displayed on the status bar on top.



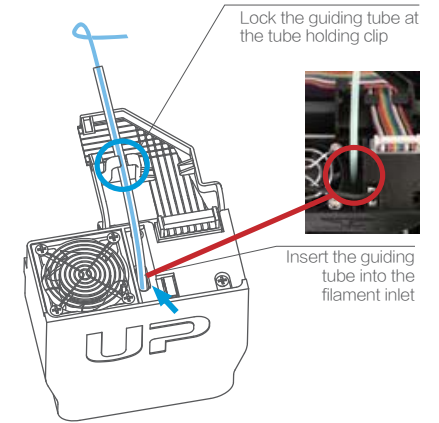
6\ Gently push the filament into the filament inlet down to the end. After reaching the print temperature, the printer will buzz and start extruding filament.



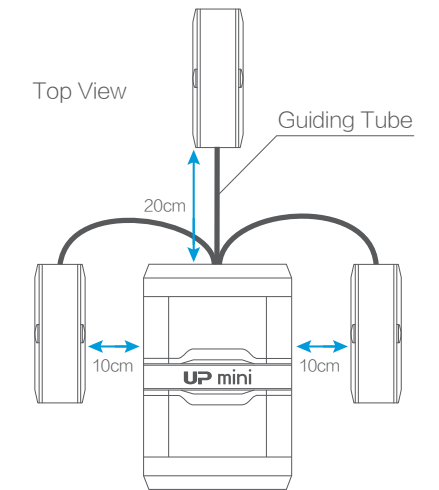
8\ Close the top covers and the doors.



7\ Push the guiding tube into the filament inlet and insert the tube in the holding clip on the mount.



9\ Note that the UP Fila Station can only be placed at following positions. Other locations could adversely affect the printing experience.

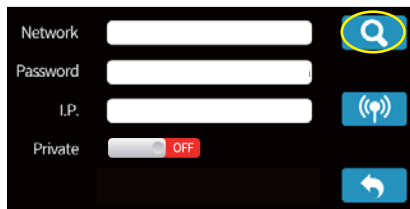


## Setup Wi-Fi

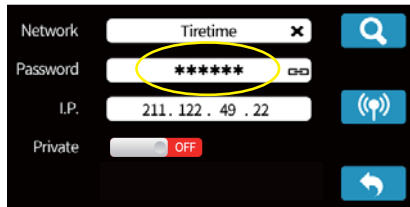
1\ Click the "Config" button.



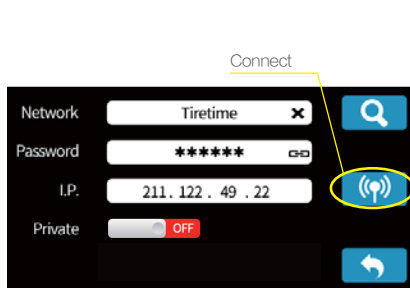
3\ Click the search button on the top right corner, and search Wi-Fi.



5\ Click the Password field to input Wi-Fi password.



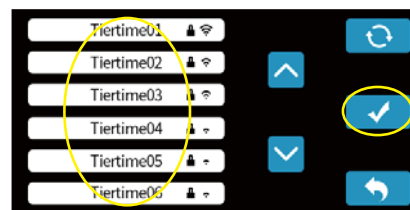
7\ Click the "Connect" button.



2\ Make sure Wi-Fi option is "ON", then click the Wi-Fi button the upper right corner.



4\ In the network list, choose the Wi-Fi network that your computer is on.



6\ Input the password, then press "return".

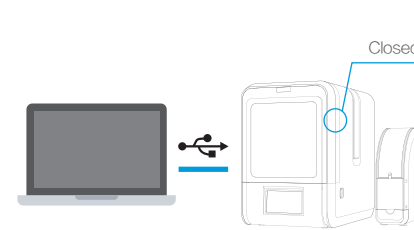


8\ If the printer is connected successfully, the Wi-Fi symbol will change to "connected".



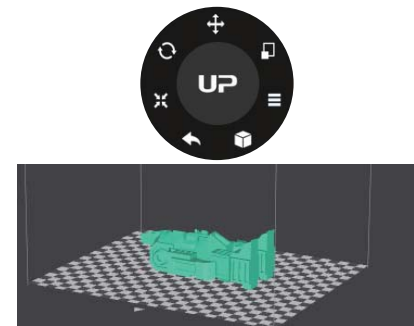
## Load and Print a 3D Model

1\ Connect the printer to the computer via either Wi-Fi or USB, and close the front door.

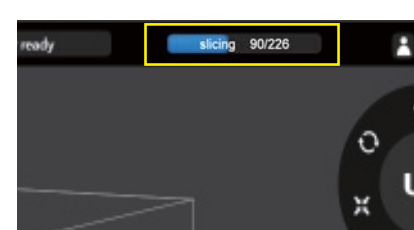


Plug in the power adaptor, and turn on the power switch at the back.

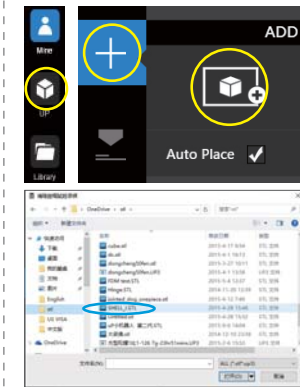
3\ Use the Control Wheel to setup the 3D model in the print space.



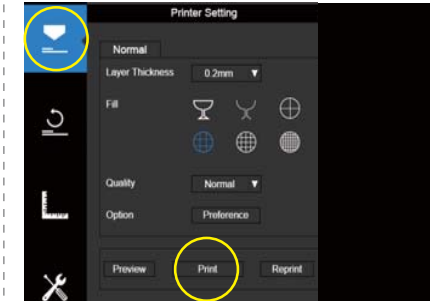
5\ The slicing and the data transmission progress will be shown on the status bar.



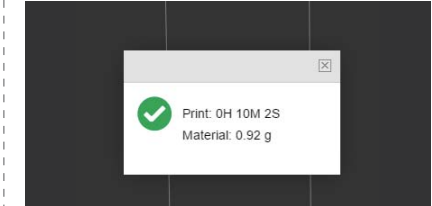
2\ Click the "UP" button at the main menu, and then click "+" button to load a file (an image or STL/UP3 file).



4\ Click "Print".



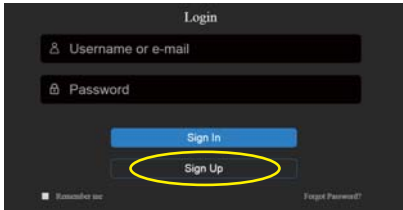
6\ When the transmission is finished, the amount of time and the material needed for the print job will be shown. After this point, user can safely disconnect the USB from the printer.



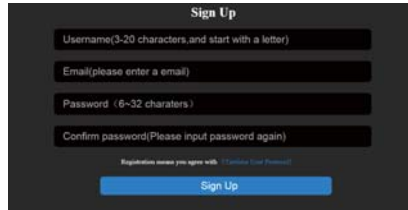
# Printer Activation

Activation will lift the restriction of the number of prints, and provide value-added services for the users.

1\ Click the “Account” button at the main menu to Sign Up.



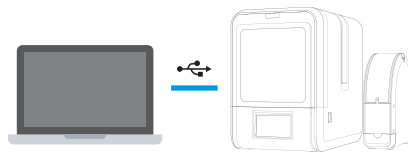
2\ If already registered, skip to step 5. Fill in the form.



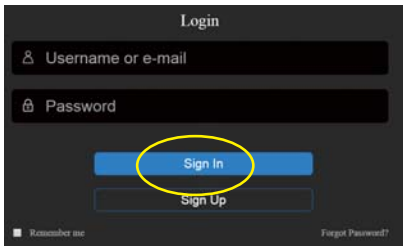
3\ Go to your registered mail box, and activate your account through the activation email.



4\ Connect UP mini 2 to your computer.



5\ Go to Account section and sign in.



6\ You will see a list of connected printers. Click “Activate” to finish the activation. User could also choose bind or unbind option in the user account under the “Bind Status” .



7\ Restart the printer after the activation.



Scan QR code to watch the Quick Start Guide video