

Premier®

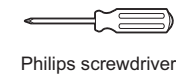
ESSEN™ SERIES / CERAMIC DISC



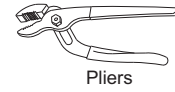
Model number: 120158 120158LF
120161 120161LF

INSTALLATION

TOOLS:



Philips screwdriver



Pliers



Pipe tape



Adjustable wrench



Hex wrench

CLEANING:

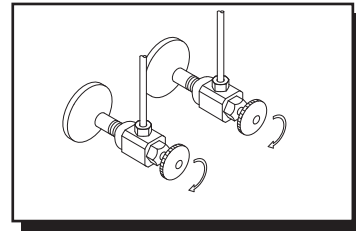
To maintain and protect the fine luster of all products, clean with a soft, damp cloth only. DO NOT USE detergents or cleansers as they may harm the protective finish.

Notes:

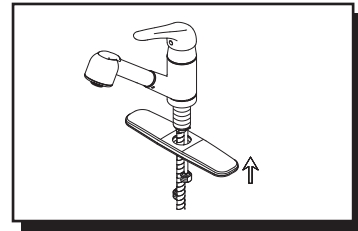
The fittings should be installed by a licensed plumber of the state

INSTALLATION STEPS:

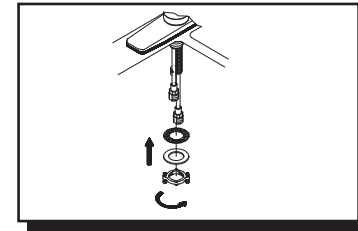
Pull Out Kitchen Faucet



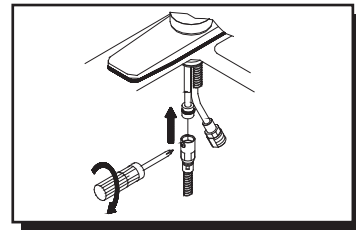
1. Turn off water under sink. Remove old faucet taking care not to damage water lines.



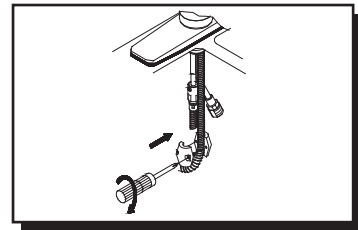
2. For 1-hole sink proceed to Step 3. For 3-hole sink, attach cover plate to bottom of faucet, then attach putty plate under cover plate and set faucet on top of sink. Tighten faucet to sink by screwing lock nut from underneath sink.



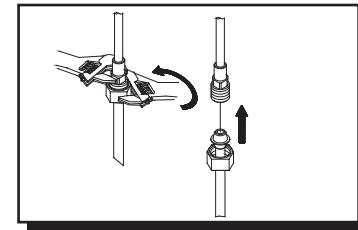
3. Pull spray/spout out until hose reaches end. Attach rubber washer, metal washer and lock nut on mounting body. Tighten by hand, then place faucet in position and tighten with screw driver.



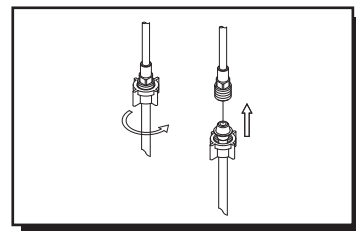
4. Gently bend copper water supply tubes slightly out to allow for larger hose clearance. Attach spray/spout hose to copper pipe. Hold hose fitting tight while turning adapter clockwise.



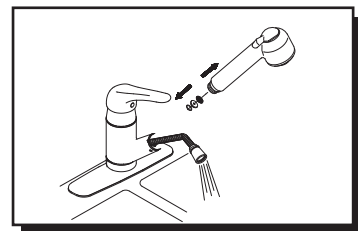
5. Attach metal weight to hose. Adjust position as desired.



6a. Stainless Steel Braided Faucet Supply Tubes: This is the easiest of all installations. If you are using Stainless Steel Braided Faucet Supply Tubes, this faucet requires one end of the Supply Tubes to have a 1/2" Female IPS connection. The other end of this Supply Tube must match the thread on the Water Supply Valve under your sink. Once you have identified the required tube carefully follow the manufacturer's installation instructions for each tube.

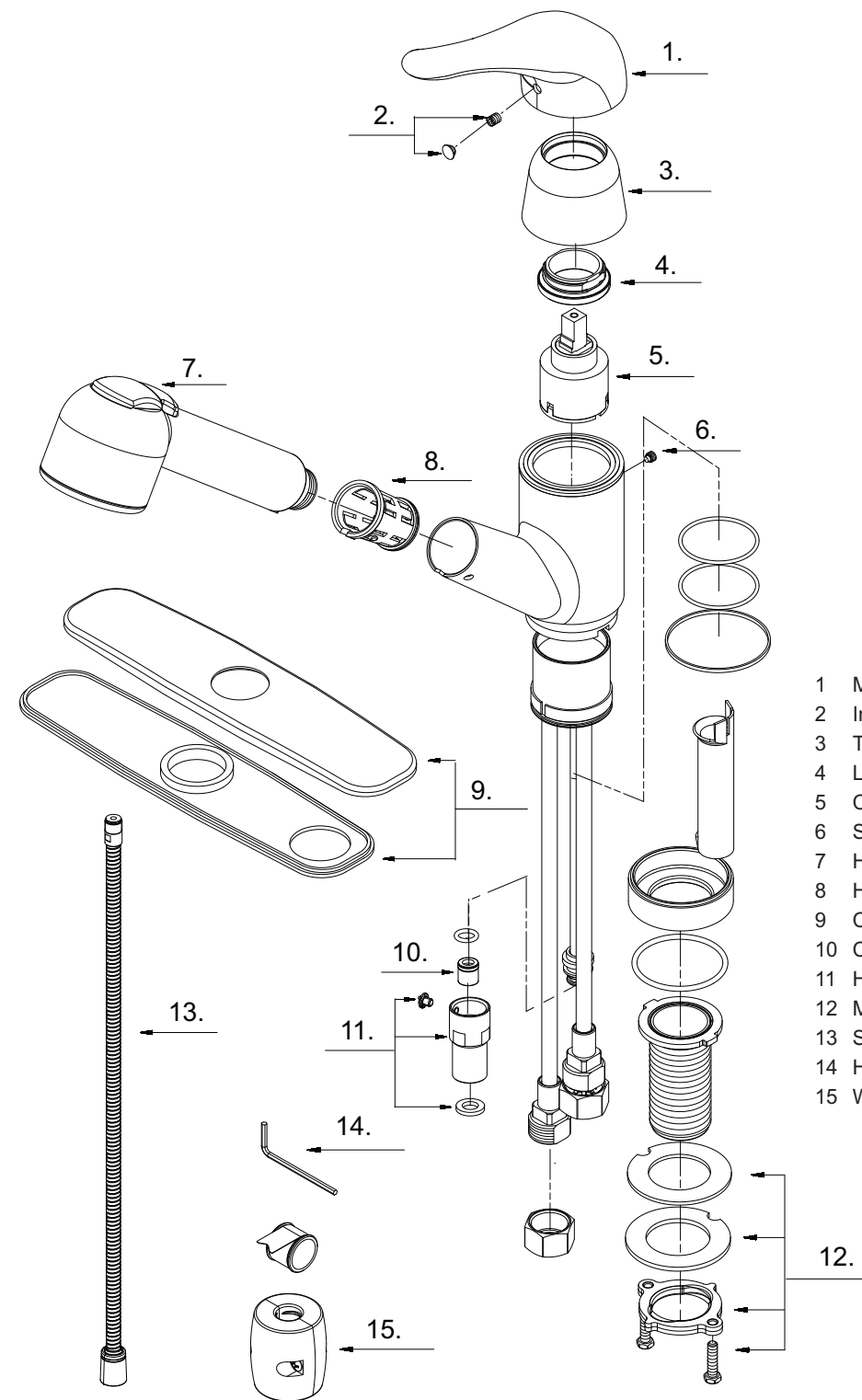


6b. Ball Nose Flexible Supplies
If you are using ball-nose flexible supplies to connect the faucet to water supply lines: Slip coupling nut onto ball-nose flexible supply. Ball-nose coupling will go partially into IPS shank or fitting. Tighten coupling nut (DO NOT OVER TIGHTEN). Install opposite end according to manufacturer's instructions for both tubes.



7. Remove spray/spout head from hose line. Turn on water slowly allowing both cold and hot sides to flush thoroughly for one minute.

Exploded Drawing



1	Metal Handle	A069528
2	Index Button-Cold/Hot	A66D569
3	Trim Cap	A103037
4	Locking Nut	A104008
5	Ceramic Disc Cartridge	A507348N
6	Screw (3/16"-32 UNEF * 3/16" L)	A008026
7	Hand Spray w/Check Valve	A523036N
8	Hose Guide	A126003KP
9	Cover Plate & Putty Plate	A667003
10	Check Valve	A519204N
11	Hose Adaptor Assembly	A66D200N
12	Mounting Hardware Assembly	A663042
13	Spray Hose	A511004N
14	Hex Wrench (H2.5 * 19 mm L * 53 mm L)	A031000N
15	Weight	A504718

Customer Service

For additional assistance, service or parts for your Premier Faucet, Call 1-866-745-4010, or visit Website: www.premierfaucet.com