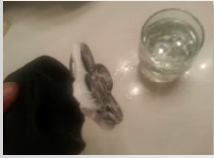




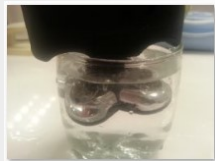
Smooth
FAST
Extra Reach



Easy 5 Second Rinse Keeps blades clean and sharp.



1. Get clean (preferably warm) water in a glass or bowl.




2. After each shave dip the shaver head only in the water as shown.



Watch video:

Skullshaver.com/info/maintenance


3. Turn shaver on for 5 seconds only. This will nicely clean the shaver head.




For wet shave use **shaving foam only**. Shaving gel is not recommended since it can be oily and sticky which could jam the delicate shaver heads.

New to this shaver? We recommend to allow an adaptation period of 3 weeks, during which you should shave regularly (at least 4 times per week) to allow your hair and skin to adapt to the new shaver.


Glide Mode. Do not squeeze or ball your fingers when using easy gliding motions.




✓



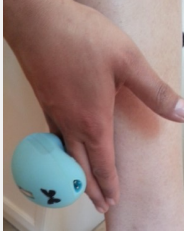
✗



Backhand Glide.



Forehand Glide.



If you like this shaver, have more fun with a useful free accessory or attachment . See back of this page for more details.

Freebie

