



Read Me Before First Usage

Manual of 2501H/C

Contents

Chapter 1 Content Description	—1
Section 1 On-Lap Monitor and Accessories	—1
Section 2 Notices of On-Lap Monitor	—2
Section 3 Safety Precautions	—3
Section 4 Safety Instructions	—3
Section 5 Product Maintenance	—3
Section 6 LCD Pixel Statement	—3
Section 7 Disposal of Electronic Equipment and Batteries	—3
Chapter 2 Installation Instructions	—4
Section 1 Install the Protection Cover	—4
Section 2 Install the Stand 4	—4
Section 3 Connect Micro USB Power Cable	—5
Section 4 Connect the Video Cables	—5
Chapter 3 Power On and Off the On-Lap Monitor	—6
Section 1 Power On and Off	—6
Section 2 Monitor Display Setting	—6
Chapter 4 Hot Keys, LED lights and OSD Instructions	—8
Section 1 Hot Keys & LED lights Description	—8
Section 2 OSD Description	—9
Section 3 Low Power Protection Warning	—10
Chapter 5 Specification	—11
Section 1 Plug and Play	—11
Section 2 Pin Assignment	—11
Section 3 Specification	—12
Section 4 Troubleshooting	—12

Chapter 1 Content Description

Section 1 On-Lap Monitor and Accessories

1. Parts Description

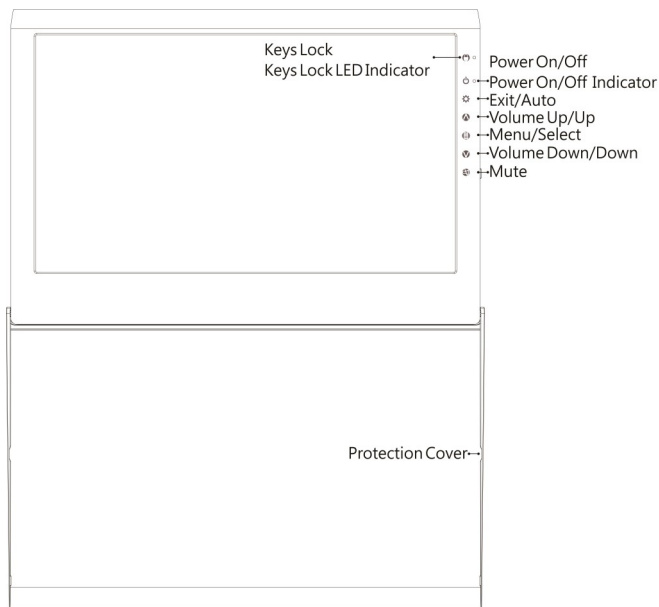


Fig.: Front side & Button Description



Fig.: On-Lap 2501 Series input/output ports

2. Package & Accessories

Accessories	2501H	2501C
Cover Stand * 1 set	Yes	Yes
Micro HDMI Video Cable*1	Yes	Yes
USB to Micro USB Power Cable*1	Yes	Yes
Charger(5V,2A)*1	Yes	Optional
VGA Video Cable(1.2m)	Optional	Optional
Mini-HDMI to Micro-HDMI Video Cable (2.1m)	Optional	Optional
Micro HDMI Video Cable (2.1m)	Optional	Optional
Micro USB to USB Touch & Power Cable(2.1m)	Optional	Optional
Stand 4	Optional	Optional
Cable Clip*1	Yes	Yes
User Manual*1	Yes	Yes

Section 2 Notice of On-Lap Monitor

- Do not put any heavy load on On-Lap Monitor. Avoid any hit or squeeze even when the On-Lap Monitor is packed in a bag.
 - Hit or squeeze may cause the LCD panel to be broken.
 - Before you put the On-Lap Monitor into a bag, please install the cover. Meanwhile, not to place the laptop or any other heavy objects together with On-Lap Monitor.
 - Avoid any hit or squeeze on the bag, due to the On-Lap Monitor may be damaged.

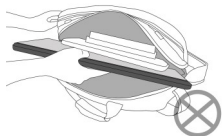


Fig.: Do not put heavy objects on On-Lap



Fig.: Avoid any hit or squeeze on the bag

- While inputting images to On-Lap 2501 by smartphones, the image quality may be blurred due the low-resolution images are expanded to the bigger screen. This can be improved by downloading the high-resolution images. Videos displayed on On-Lap 2501 not at full-screen mode may be caused by the format of videos or the settings of smartphones or cameras. Please consult the manufacturers of your smartphones or cameras.

Section 3 Safety Precautions

1. The Product may be severely damaged from overturning or falling. Please do not place on a shaky or unstable table, cupboard or trolley. Do not use the On-Lap Monitor on a moving vehicle.
2. Do not place the items on a vibrating surface, vibration may cause damage to the internal components.
3. The product is not waterproof. Do not use the Product at or near a place with water.
4. Do not insert any object into the Product' s slots or gaps.
5. Loudness warning! Avoid volume levels that may be harmful to your hearing. Please check the volume setting before you use the Audio Jack.
6. Please notice the plug is applicable to its AC adapter only.

Section 4 Safety Instructions

Please read this Manual carefully and observe the operation instructions and precautionary notes. Do retain this document for future reference.

Section 5 Product Maintenance

Do not attempt to repair the Product yourself.

Please send it to our professional maintenance personnel for service.

Should any of the following conditions occur, please contact our maintenance personnel for service:

- 1) Unable to operate the Product after following the instructions in the Manual.
- 2) The Product falls and the outer casing is damaged.
- 3) Power cable or video cables is damaged.
- 4) Liquid infiltrated into the Product.

Section 6 LCD Pixel Statement

The On-Lap Monitor uses a high quality LCD panel. Nevertheless, there might be instances where defective pixels may occur; however, this will not affect the normal functioning of the Product.

Section 7 Disposal of Electronic Equipment and Batteries

The electronic equipment and batteries should not be disposed of with household waste but should be left at an appropriate collection point for recycling. Some products are battery built-in. Do not attempt to remove internal batteries. The products should be handled by a recycling center.



Chapter 2 Installation Instructions

Section 1 Install the Protection Cover

1. Use the Cover as the stand

Open the Cover. Turn the Cover backward of the On-Lap Monitor and put the Product on the table

Fig.: Turn the Cover backward of the Product and put it on the table.

2. Remove and Install the Cover

Open the Cover and put the Cover with the monitor flatly on the table. Fix the monitor by one hand and use another hand to push the Cover latch 5mm aside. Then remove the cover in the direction of arrow.

When install the Cover, insert the left latch of the Cover to the enclosure hole of On-Lap Monitor first. Then push the right latch of the Cover 5mm aside and insert the latch to the right enclosure hole of the monitor.

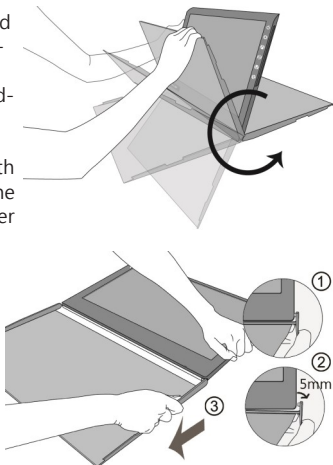


Fig.: Fix the monitor by one hand and use another hand to push the Cover latch aside. Then remove the cover.

Section 2 Install the Stand 4 (Optional)

Step1. Remove the Cover

Step2. Assemble Stand 4

Select the desired angle placement to assemble Stand 4. Before assembly, check if X plate is properly inserted onto slot.



Step3. Place On-Lap 2501 Series onto Stand 4

Place On-Lap 2501 Series onto Stand 4. Stand 4 is positioned at the bottom center of monitor.



Fig.: Place On Lap 2501 Series onto Stand 4

Section 3 Connect Micro USB Power Cable

Step1. Connect Micro USB Power Cable

Insert the DCIN plug of Micro USB Power cable to the **DCIN** port of On-Lap 2501 . And insert the USB plug of the Micro USB Power cable to the USB port of a laptop or the 5V 2A charger.

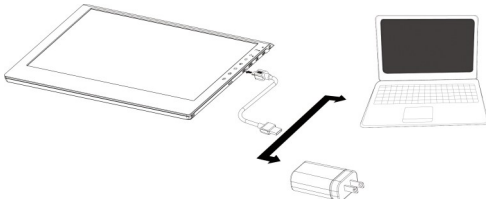


Fig.: Connect Micro USB Power Cable to a laptop or charger

Caution: Plugging HDMI Video Cable first instead of Micro USB Power Cable may cause the OSD unbooted or unresponsive.

Section 4 Connect the Video Cables

On-Lap 2501 supports HDMI input, VGA input.

1. Use Micro HDMI port to input

Insert the Micro HDMI (HDMI-D) plug of Micro HDMI Video Cable to the Micro HDMI port of On-Lap. Insert the HDMI-A plug of Micro HDMI Video Cable to the HDMI port of laptop, Tablet PC, game consoles or DVD players.

Notice: To connect some smartphones, a HDMI-A to HDMI-D adapter is required and shall be purchased in additionally. Or you may need to purchase the converting cable or adapter from your smartphone manufacturers. To connect the digital cameras, you may need to purchase an additional HDMI-A (female) adapter to mini HDMI (male).

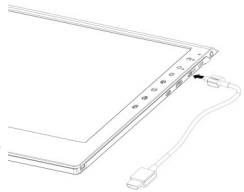


Fig.: Connect HDMI Video Cable

2. Use VGA port to input

The VGA Video Cable of On-Lap 2501(optional accessory) is required in this case. Insert the small plug of VGA Video Cable to the VGA port of On-Lap Monitor and insert the D-Sub plug of the cable to the D-Sub/VGA output port of laptops.

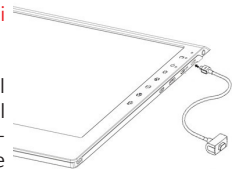


Fig.: Connect VGA Video Cable


Chapter 3 Power On and Off the On-Lap Monitor

Section 1 Power On and Off

1. First Usage: After inserting the Micro USB Power to On-Lap Monitor and 5V DC power, the On-Lap Monitor will be on automatically. On-Lap Monitor will scan the video input and display the video if any.
2. Power On: Touch "  "button to power on the On-Lap Monitor.
3. Power Off: Touch "  "button to power off the On-Lap Monitor.
4. Follow the following steps for monitor settings.

Section 2 Monitor Display Setting

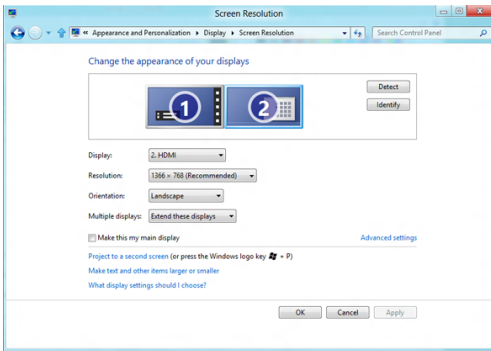
1. Resolution setting – Windows 7/ Windows 8.1/ Windows 10 system

- Click on  icon
- Click on **Control Panel > Appearance and Personalization**
- Click on **Display > Connect to an external display.**


Normally Display ① is the laptop' s monitor, Display ② is the external monitor. Click on **Detect** if you are unsure.

- At **Display**, select "2.HDMI" (digital video) or "2. display device: VGA" (analog video) for **Display**
- Select "1366x768"(2501C) or "1920x1080"(2501H) for **Resolution**
- Select "Landscape" or "Portrait" for **Orientation**.
- Select "Extend these displays" for **Multiple display**, and drag Display 2 to the right side of Display 1. For Duplicated mode, select "Duplicate these displays".
- Select OK and exit after saving the settings.

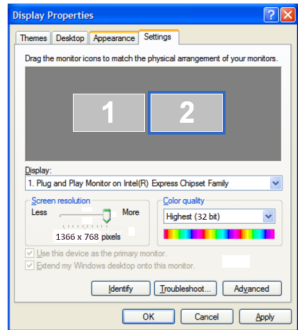
[Please log on GeChic' s official website for more Windows 10/ 8.1 system set up information.]



2. Resolution setting- Windows XP system

- Click on 
- Click on **Setting > Control Panel > Appearance and Theme**
- Click on **Adjust screen resolution**
- Click on **Setting**, select **Monitor** at **Display**, and set the **Screen Resolution** as **1366x768(2501C)** or **1920x1080(2501H)**; Select **"Extend my Windows desktop to this monitor"** and then select **" OK"** and exit.

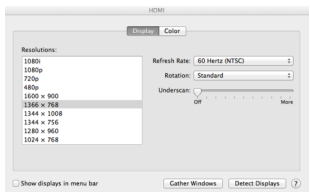
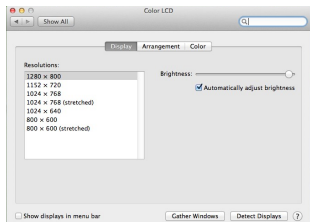
[Note: "Vertical mode" cannot be directly chosen on Windows XP system; the adjustment needs to be made via the video card. Please refer to the user manual of your video card.]



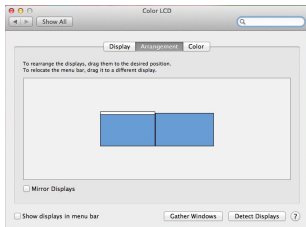
3. Resolution setting- MAC system

[Note : This setting requires Mini DisplayPort to HDMI adapter]

- Click on **System Preferences > Displays**
- The above window appears on the On-Lap Monitor. Please adjust the resolution as **1366x768(2501C)** or **1920x1080(2501H)**.



- Select the arrangement mode to adjust the display position of the monitors; this is the dual monitor display mode (laptop's monitor)



Chapter 4 Hot Keys and OSD Instructions

Section 1 Hot Keys and LED Light Description

Caution: The buttons are capacitive touch module. Please touch the buttons by the fingertip gently. Do not press the buttons with pressure or continuously, which may cause them fail to response. "Increase/up" or "Decrease/down" continuously shall be done by touching the button and holding. Do not touch two buttons at the same time, due it may cause no response or fault response.

1. LED Lights Description :

The LED indicator light shows green light when turn on On-Lap Monitor and shows red light when stand by.

- **Hot Keys Lock Light:** After press the Lock Button, all the buttons are locked and the orange LED light is on.
- **Power Light:** When the On-Lap Monitor is turned on, the green LED light is on. When the Monitor is suspended, the Light turns red. When the Monitor is turned off, the LED light is off.

2. Hot Keys Description

- **Hot Keys Lock Button:** Touch the Lock Button constantly for 3 seconds, and all the buttons are locked. Touch the Lock button again, and all the buttons are unlocked. While the On-Lap Monitor is held in the hands, the buttons can be locked and avoid to be touched by accident.
- **Power:** Touch the Power Button can power on/off the Monitor.
- **Exit/Auto Adjustment:** In the OSD panel, touch the Exit Button to exit and back to the previous page. When there is no OSD menu, touch this Button will activate automatic adjustment function (only pertains to analog VGA signal)
- **Increase Volume/UP:** Touch this Button to increase the volume of speakers. If the OSD menu is launched, touch this button will move up the list. Touch and hold for automatic continuous increase.
- **Menu/Select:** Touch the Menu Button to launch OSD panel.
- **Decrease Volume/Down:** Touch this Button to decrease the volume of speakers. If the OSD menu is launched, touch this button will move down the list. Touch and hold for automatic continuous decrease.
- **Mute:** Touch the Mute Button to shut down the speakers. Touch the Mute Button again can release the speakers' output.



Fig.: On-Lap 2501 Series input/output ports

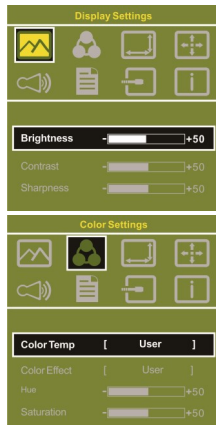
Section 2 OSD Description

1. Basic Button Operation

Press  button to launch the OSD panel. Press  or  to view the functions. To adjust a certain function, press  to launch it. If the selected function consists of sub-menu, press  or  again to view the sub-menu. When the desired function is highlighted, press  to launch it. Press  or  to change the setting. To exit, press  to exit. Repeat the preceding steps to adjust other setting.

2. Display Settings

As shown in Fig., after Display Settings is launched, can adjust **Contrast**, **Brightness**, and **Sharpness**.

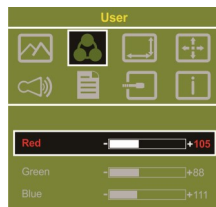


3. Color Setting

As shown in Fig., after Color Settings is launched, can adjust **Color Temp** and **Color Effect** to adjust screen color setting.

Hue setting can make the image color lean toward green or purple/.

Saturation setting can make saturation more vivid or more black and white.



At Color Temperature, select "User", can adjust RGB color setting, please refer to Fig. Select "Cool" can increase the blue saturation of the image. Select "Warm" can increase the red saturation of the image. At Color Effect, select "Standard", "Game", "Movie", "Photo" and "Vivid".

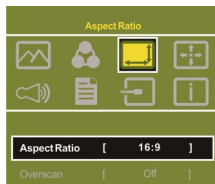
Select "User" can adjust the Hue and Saturation of Red/Blue/Green/Cyan/Yellow/Magenta.

4. Aspect Ratio

Please refer to Fig. Suggested setting is 16:9.

When HDMI image is 4:3 format, can select 4:3, make image not enlarge to 16:9 and change shape. Using VGA image input won't have this function

Overscan: Only when input HDMI Video signal (ex. 1080P/720P/576P/480P), can use such function. Use this function can adjust the image scan area.



5. Manual Image Adjust

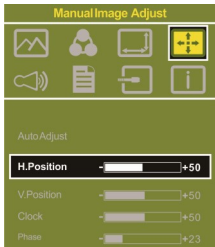
Auto Adjust: Only when input VGA signal can use such function. Will automatically adjust VGA setting

H.Position: Moves the display area left and right .

V.Position: Moves the display area up and down

Clock: Adjust the pixel clock for user's preference

Phase: Adjust the pixel phase for user's preference



6. Audio: Adjust volume or select mute

7. OSD Menu

OSD Timer: Adjust OSD Time

OSD H. POS: Moves OSD left and right

OSD V. POS: Moves OSD up and down

OSD Transparency: Makes OSD transparent

Language: Select OSD language

Reset: Restore to factory setting

8. Input Source: Select VGA signal source, HDMI signal or Auto Detect

9. Information: Display factory version

Section 3 Low Power Protection Warning

The maximum power consumption of the On-Lap 2501 Series is 2.0 A. If the volume setting is too high, the power requirement may be higher than 2.0 A. At the meantime, the Low Power Protection Warning will appear. Do reduce the volume

Fig.: Low voltage warning shown at upper right corner on screen.



Chapter 5 Specification

Section 1 Plug and Play

The On-Lap Monitor conforms to VESA DDC standard and supports VESA DDC2. DDC2B is a bi-directional data channel based on I²C protocol. The host can request EDID information over the DDC2B channel. The On-Lap Monitor is able to inform the host system of its identity, and depending on the level of DDC used, communicate additional information about its display capabilities.

Section 2 Pin Assignment

1. HDMI Connector Pinout

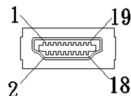


Fig.: HDMI-A connector
(Connect to HDMI port of PC)

Pin	Name	Pin	Name
1	TMDS Data2+	11	TMDS Clock Shield
2	TMDS Data2 Shield	12	TMDS Clock -
3	TMDS Data2 -	13	CEC
4	TMDS Data1+	14	Reserved
5	TMDS Data1 Shield	15	SCL (I ² C Serial Clock for DDC)
6	TMDS Data1 -	16	SDA (I ² C Serial Data Line for DDC)
7	TMDS Data0+	17	DDC/CEC Ground
8	TMDS Data0 Shield	18	+5 V Power
9	TMDS Data0 -	19	Hot Plug Detect
10	TMDS Clock+		

2. VGA Connector Pinout

Pin No.	Name	Pin No.	Name	Pin No.	Name
1	RED	6	RGND	11	NC
2	GREEN	7	GGND	12	SDA
3	BLUE	8	BGND	13	HSYNC
4	NC	9	+5V	14	VSYNC
5	GND	10	SGND	15	SCL

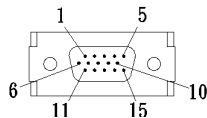


Fig.: VGA connector
(connect to PC' s VGA port)

3. USB Power Cable

Pin No.	Name
1	Vcc(+5V)
2	NC
3	NC
4	Ground

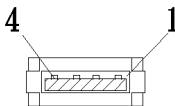




Fig. : Micro USB power cable
(connect to 5V DC power)




Section 3 Specification

Model	On-Lap2501H	On-Lap2501C
Panel	15.6" IPS FHD (16:9 Wide) LED Backlight	15.6" HD (16:9 Wide) LED Backlight
Resolution	1920x1080	1366x768
Viewing Angle (Typical)	(U/D/R/L)80°/80°/80°/80°	(U/D/R/L)20°/45°/45°/45°
Contrast Ratio (Typical)	400:1	400:1
Response Time (Typical)	17.5(ms)	8(ms)
HDMI Video Display Capabilities	1080P(60Hz/50Hz); 1080i(30Hz/25Hz); 720P(60Hz/50Hz)	1080P(60Hz/50Hz); 1080i(30Hz/25Hz); 720P(60Hz/50Hz); 576P(50Hz); 576i(25Hz);480P(60Hz); 480i(30Hz)
Speakers	1.0W (Max.) x 2	1.0W (Max.) x 2
Rating Voltage/Current	5V  2A(Max.)	5V  2A(Max.)
Dimension (Typical)	387x 260 x 12.8mm (Without Cover)	387x 260 x 12.8mm (Without Cover)
Weight (Typical)	780g (Monitor) 1035g(With Cover)	860g (Monitor) 1115g(With Cover)

Section 4 Trouble Shooting

1. Image or Audio output troubles

Problem	Solution
No image	1. Examine the connection of the Micro USB Power Cable (one plug to <u>DCIN</u> port, the other to the USB port of the Adapter). If the connection is correct, the green LED light shall be on.

Problem	Solution
No image	2. Check the connection of the Video Cables (HDMI or VGA). One plug shall be inserted to the Video Input port of On-Lap Monitor; the other shall be inserted to the Video Output port of laptops, smartphones. 3. Do not insert the VGA Video Cable to the Micro HDMI Input Port, or vice versa the Micro HDMI Cable to the VGA Input port. The wrong connection caused no image displayed.
No image	Please adjust brightness and contrast settings, or reset them to factory default via OSD.
OSD displays “ No Signal” warning	Please check if the Video Cable is correctly connected to On-Lap Monitor’ s video input port and laptops’ video output port.
Image disappears, or image size is too big, too small, or image is not centered.	The trouble may be caused by VGA video input. Please adjust resolution, clock, horizontal position and vertical position via OSD.
No audio output	Please check if the Mute Button  was touched. Touch the hot key “  ” up to increase the volume
Hot Keys no response	Please check if the Power LED-green light is on. Please check if the Hot Key Lock Button was touched. Make sure you use the finger tip to touch the center of the buttons.
OSD no response	Please make sure 1. Plug the USB Power Cable first 2. Then plug the HDMI Video Cable 3. Use the finger tip to touch the center of OSD button  Caution: Plugging HDMI Video Cable first instead of Micro USB Power Cable may cause the OSD unbooted or unresponsive.

2. The unavailability of “ Duplicate these displays” or “ Extend these displays” in Display setting may be limited by the graphics chip of the laptop or have the graphic chip features limited due to the power saving mode of the laptop or have the graphic chip driver updated. Please consult your laptop manufacturer or graphic chip manufacturer.



GeChic Corporation

5F-3, No. 138, Zhongming S. Rd.,
West Dist., Taichung, Taiwan (R.O.C.)
Customer Service: service@gechic.com
Rev.2017/1/16

