

Remote Control Outlet

Model No.: ZAP 1FX

Questions or Concerns?
(855) 686-3835 • support@etekcity.com

Thank You.

Thank you for purchasing the ZAP 1FX Remote Control Outlet by Etekcity. We are dedicated to providing our customers with quality products for building a better living. Should you have any questions or concerns about using your new product, feel free to reach out to our helpful customer support team at (855) 686-3835 or by email at support@etekcity.com. We hope you enjoy your new product!

Safety Information

IMPORTANT: Please read and comply with all of the instructions and warnings provided in this manual before using the product. Failure to comply with the instructions and warnings provided herein may result in inaccurate results and/or damage to the product itself.

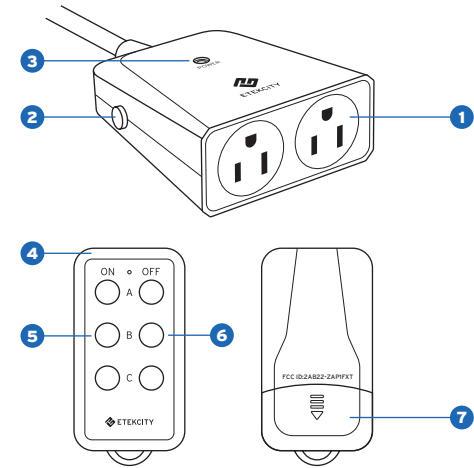
Important Safety Information

- The wireless range may be shortened by other electronic devices, appliances, walls, and other physical barriers.
- DO NOT exceed the maximum load current of 10A (approximately 1200W).
- DO NOT use appliances such as refrigerators, air conditioning units, and washing machines with the outlet. Such appliances exceed the maximum load current of 10A (1200W). Keep out of reach of children.
- To avoid overheating, this outlet is best used in areas with proper air circulation.

- For your safety, make sure the batteries within the remote is correctly installed before use.
- DO NOT dispose any part of this product in a fire. The remote is not compatible with rechargeable batteries.
- For best results, regularly change the battery in the remote control.
- If the remote is not in use for an extended period of time, remove the battery from the remote.
- Discard all parts of this product in accordance with local environmental regulations. Do not dispose in regular household waste.
- This outlet is not compatible with the ZAP 3VX, 5LX, 5LX-S remote outlets, or with older remote-controlled outlet models.

Function Diagram

- Outlet
- Power / Program Button
- Outlet Indicator Light
- Remote control
- On Buttons
- Off Buttons
- Battery Compartment

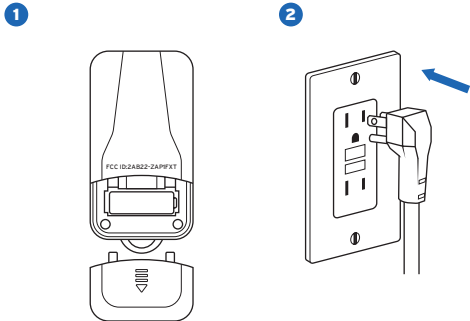


Operation

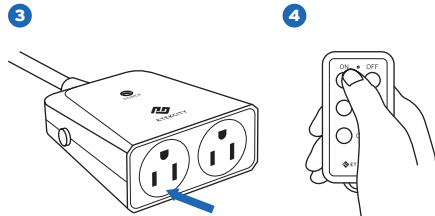
The outlet is pre-programmed for immediate use, but the configuration can be customized to meet your needs.

General operation

- Install one 12V/23A battery into the remote control.
- Plug the outlet into a powered socket.

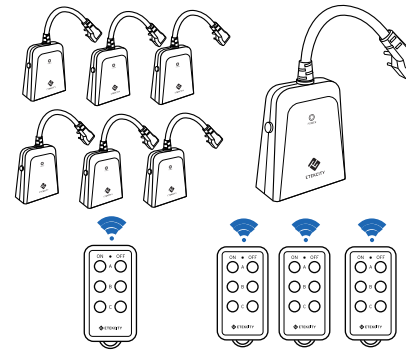


- Plug an appliance into each outlet. Keep the appliance switch to 'ON' in order to allow the outlet to control the device.
- Press the 'ON' or 'OFF' button for the corresponding letter on the remote.

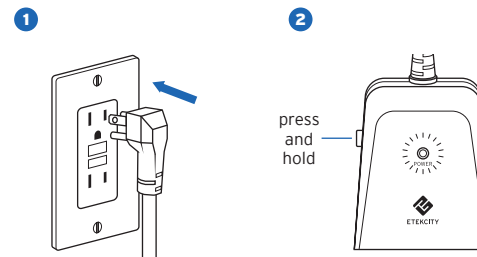


Reprogramming an Outlet

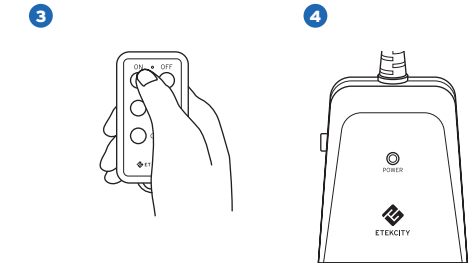
NOTE: By customized program, you can use one remote controller to control multiple outlet or use multiple remote to control one outlet



- Plug the outlet into a powered socket.
- Press and hold the programming button until the indicator light starts to blink.



- Release the program button, press the "ON" or "OFF" button for the desired number on the remote.
- Pairing is successful when the indicator light stops blinking. The indicator light on the corresponding outlet will turn on, confirming that the outlet is now in use.

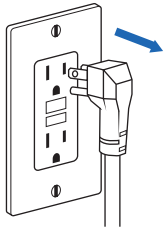


Resetting an Outlet

To remove an outlet from all remote control pairings:

- Unplug any devices connected to the remote outlet. Remove the outlet from the power socket.
- Press and hold the program button.

1

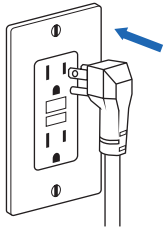


2

press
and
hold

- Plug the outlet back into the power socket while continuing to hold the program button.
- Hold the program button until the indicator light begins to flash.
- Program reset will be complete when the indicator light stops blinking.

3



4



Troubleshooting

Issue	Solution
Outlet is unresponsive to remote commands.	Replace the remote battery with new 12V / 23A battery. Low battery power may decrease readable wireless remote range.
	Make sure the outlet and device are properly connected and powered on.
	Make sure that the outlet is placed in an area with proper air circulation without overheating.
	Make sure the maximum load current of 10A (approximately 1200W) is not exceeded. If so, unplug the device from the outlet immediately.
	Make sure the remote control distance is within the Max range
	If the outlet is still unresponsive, refer to the Resetting and Reprogramming sections in the manual.

Specifications

Voltage	120V / 60Hz
Resistive Load	10A
Max Power	1200W
Transmission Frequency	433.92MHz
Remote Battery Power	12V (23A)
Max Remote Control distance	150 ft. (45m)*
Operating Temperature	14°~104°F (-10°~40°C)
Storage Temperature	-4°~167°F (-20°~75°C)
IPX Level:	IPX 4
UV Proof	conform to UL 746C-2004

***NOTE:** The wireless range may be shortened by other electronic devices, appliances, walls, and other physical barriers.

This device complies with Part 15 of the FCC Rules. Operation is subject to the following two conditions: (1) this device may not cause harmful interference, and (2) this device must accept any interference received, including interference that may cause undesired operation.



Warranty

TERMS & POLICY

Etekcity warrants all products to be of the highest quality in material, craftsmanship and service for a minimum of 1 year, effective from the date of purchase. Warranty lengths may vary between product categories. Etekcity will replace any product found to be defective due to manufacturer flaws based on eligibility; refunds are available within the first 30 days of purchase. This warranty extends only to personal use and does not extend to any product that has been used for commercial, rental, or any other use in which the product is not intended for. There are no warranties other than the warranties expressly set forth with each product.

This warranty is non-transferrable. Etekcity is not responsible in any way for any damages, losses or inconveniences caused by equipment failure or by user negligence, abuse, or use noncompliant with the user manual or any additional safety, use, or warnings included in the product packaging and manual.

This warranty does not apply to the following:

- Damage due to abuse, accident, alteration, misuse, tampering or vandalism.
- Improper or inadequate maintenance.
- Damage in return transit.
- Unsupervised use by children under 18 years of age.

Etekcity and its subsidiaries assume no liability for damage caused by the use of the product other than for its intended use or as instructed in the user manual. Some states do not allow this exclusion or limitation of incidental or consequential losses so the foregoing disclaimer may not apply to you. This warranty gives you specific legal rights and you may also have other rights which may vary from state to state.

ALL EXPRESSED AND IMPLIED WARRANTIES, INCLUDING THE WARRANTY OF MERCHANTABILITY, ARE LIMITED TO THE PERIOD OF THE LIMITED WARRANTY.

Should your product prove defective within the specified warranty period, please return the defective unit in its original packaging with (1) an original copy of the invoice, (2) your order confirmation number, (3) and your warranty ID number.

To find out more about extending your warranty, visit www.etekcity.com/warranty or contact customer support.

Customer Support

Should you encounter any issues or have any questions regarding your new product, feel free to contact our helpful Customer Support Team. Your satisfaction is our goal!

Customer Support Support Hours

Etekcity Corporation
1202 N. Miller St. Suite A
Anaheim, CA 92806

Monday - Friday:
9:00 am - 5:00 pm PST

Local: (657) 500-1872
Toll-Free: (855) 686-3835
Fax: (657) 202-1693
support@etekcity.com

*Please have your order confirmation number ready before contacting customer support.

Date of Purchase	
Place of Purchase	
Order Number	



Scan here to join the community!
Visit us at www.etekcity.com