

UN-INSTALLATION OF YOUR EXISTING GRAPHICS CARD

(Skip this part if you installing this card into a new computer)

Please check you have drivers for your current display card so that you are able to restore them if necessary

Step 1: Removing current graphics software

Go to Control Panel - Add/Remove Programs and remove any graphics utilities that may be installed for current/previous display adapters

Please refer to your current graphics adapter manual

Step 2: Resetting current graphics card with Windows

- Go to Control Panel - Display - Settings - Advanced - Adapter - Change
- Click 'Next' to start hardware wizard
- Select 'Select from a list' and click 'Next'
- Select 'Show all hardware', 'Standard VGA types' and 'Standard VGA Adapter', then click 'Next'
- Click 'Next' to continue installation, and re-start PC if/when prompted

GRAPHICS CARD INSTALLATION

Step 1: Mainboards with onboard graphics adapter / controller

(Skip this step if you are not using this type of mainboard)

- It is advised to disable onboard graphics controllers either by jumper on the mainboard, or by changing graphics adapter priority in the BIOS, CMOS or hardware setup. The mainboard technical reference manual should have more information.
- If disabled by the BIOS, there will normally be an option in Integrated Peripherals or Chipset Features: 'Init Display First' (or similar). For mainboards with no AGP slot, options may be PCI slot/AGP or PCI slot/Onboard. For mainboards with an AGP slot, options may include PCI slot/AGP slot/Onboard AGP.

Step 2: Hardware Installation

- Please shut down PC and insert new card (or replace the old card with this new card) in AGP or PCI slot and secure it by screwing in place. It is important to ensure card is fully inserted in the slot.

To identify the correct slot for your card please note:

- A PCI slot is WHITE in colour
- An AGP slot is BROWN in colour
- A PCIE slot can be Black, Blue, Yellow or Orange

Step 3: Software Installation

(Use one of the following 3 methods as appropriate)

(Method 1)

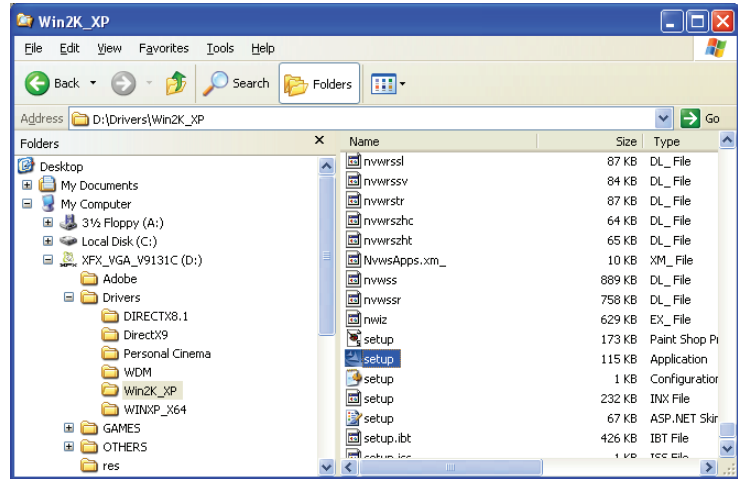
Insert the XFX autorun CD provided and follow directions on the screen. Make sure you select the correct version of Windows. Then, click the "TV Capture" button ONLY if your card has VIVO support (Video-In Video-Out).



XFX Graphics Card Installation Guide for Windows XP

(Method 2)

You can browse the CD in your Windows Explorer and click the driver installation program in the folder called "Drivers" and then select "Win2K_XP" (please note that there may be some slight differences with different driver CD versions). Please double-click on "setup" to install the 32-bit driver, compatible for both 32-bit XP and 2000. There may be more than 1 file labeled "setup", the correct file is identified both by the icon and by the file type "Application".

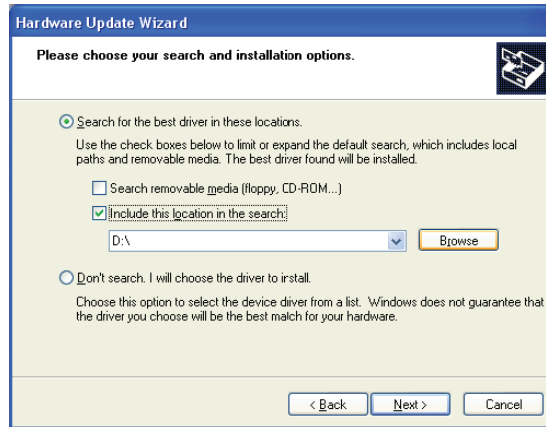
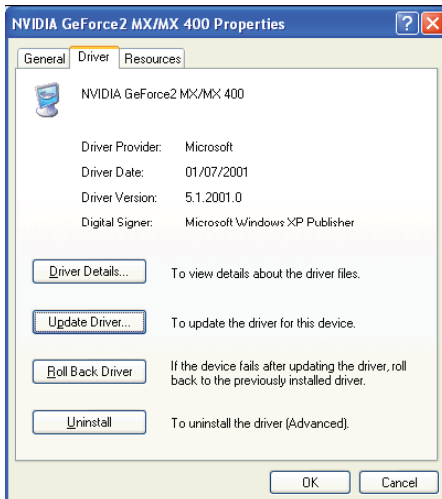


(Method 3)

If the automatic driver installation is not successful, please follow instructions below.

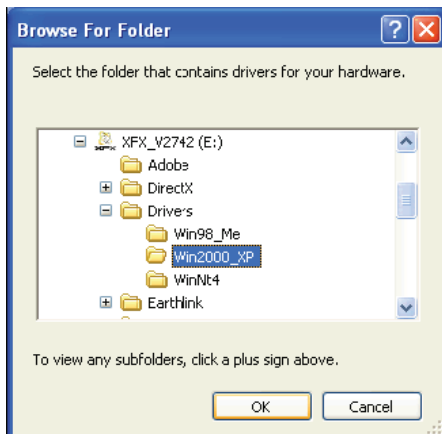
Windows XP

- Go to Control Panel - Display - Settings - Advanced - Properties - Driver - Update Driver



- Select 'Install from a list.' and click 'Next'

- Select 'Search for the best driver..' and click 'Browse'



- Browse to the relevant location on the CD (will depend on CD version)

- Click 'Ok' and complete installation, restarting for the changes to take effect