



MAKE YOUR JEEP
DIFFERENT

Opar Interior Cargo Rack for 07-17 Jeep Wrangler Unlimited JK [4 Door].

Installation Time: 1 hour

Tools Required:

Wrench & Socket.

Inner & Out Hexagon screwdriver

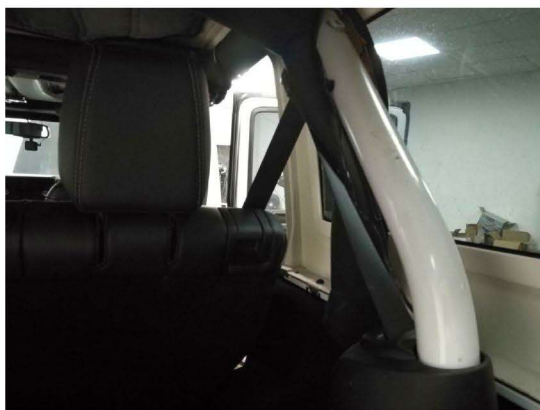
INCLUDED COMPONENTS :



Installation Instructions:

STEP 1

Before installation, the rear of the JK will be shown below.





STEP 2

Install the pinch tube with the bolts, but didn't need to screw it. As shown below. Because the height of the cargo rack still need to be adjusted before complete installation. Unless you can make sure how height of it. The Both side is the same.



STEP 3

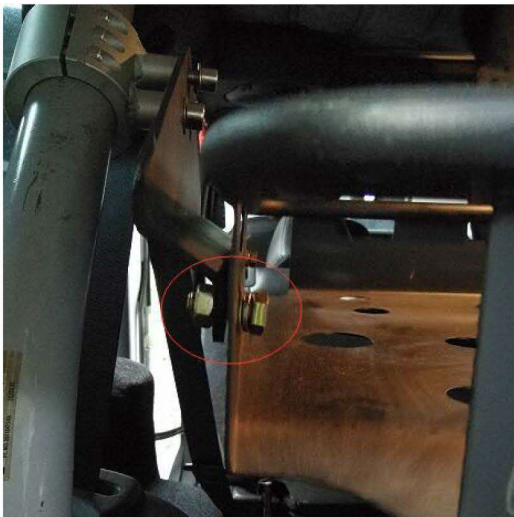
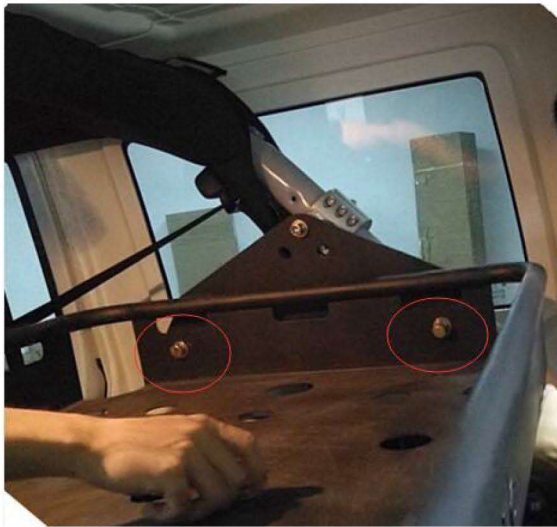
After the step 2, Install the bracket plate, It also didn't need to screw it, as shown in the following picture. Both side is the same.



STEP 4

After completing the above steps, then use the bolts and nuts to install the cargo rack. There are four screw holes for install. Install it one by one will be better. And don't forget to screw it with the wrench or out hexagon screwdriver. As shown below.





STEP 5

Adjust the height of the cargo rack, so that it does not affect the normal use of the tailgate and rear windshield. And tighten all the bolts for complete the installation. As shown in the following figure.



STEP 6

Once you have everything in place you are finished with installation. Congratulations on your new product.

