



protect. teach. love.®

FREE TO ROAM

WIRELESS FENCE™

Quick Start Guide

Model Number
PIF00-15001

Hereinafter Radio Systems Corporation, Radio Systems PetSafe Europe Ltd., Radio Systems Australia Pty Ltd. and any other affiliate or Brand of Radio Systems Corporation may be referred to collectively as "We" or "Us".

Important Safety Information

Explanation of Attention Words and Symbols used in this guide

! This is the safety alert symbol. It is used to alert you to potential personal injury hazards. Obey all safety messages that follow this symbol to avoid possible injury or death.

⚠ WARNING WARNING indicates a hazardous situation which, if not avoided, could result in death or serious injury.

⚠ CAUTION CAUTION, used without the safety alert symbol, indicates a hazardous situation which, if not avoided, could result in harm to your pet.

NOTICE NOTICE is used to address safe use practices not related to personal injury.

⚠ WARNING

- Not for use with aggressive dogs. Do not use this product if your dog is prone to aggressive behavior. Aggressive dogs can cause severe injury or death to their owners and others. If you are not sure that this product is right for your dog, please talk to your veterinarian or a certified trainer.
- Risk of electric shock. Use the Fence Transmitter indoors in dry location only.
- Risk of explosion if battery is replaced by an incorrect type. Do not short circuit, mix old and new batteries, dispose of in fire, or expose to water. When batteries are stored or disposed, they must be protected from shorting. Dispose of used batteries properly.

CAUTION This PetSafe® Free to Roam Wireless Fence™ system is NOT a solid barrier. The system is designed to act as a deterrent to remind pets by Static Correction to remain in the boundary established. It is important that you reinforce training with your pet on a regular basis. Since the tolerance level to Static Correction varies from pet to pet, Radio Systems Corporation CANNOT guarantee that the system will, in all cases, keep a pet within the established boundary. Not all pets can be trained to avoid crossing the boundary! Therefore, if you have reason to believe that your pet may pose a danger to others or harm himself if he is not kept from crossing the boundaries, you should NOT rely solely upon the PetSafe Free To Roam Wireless Fence system to confine your pet. Radio Systems Corporation shall NOT be liable for any property damage, economic loss or any consequential damages, sustained as a result of any animal crossing the boundary.

Proper fit of the collar is important. A collar worn for too long or made too tight on the pet's neck may cause skin damage. Ranging from redness to pressure ulcers; this condition is commonly known as bed sores.

- Avoid leaving the collar on your pet for more than 12 hours per day.
- When possible reposition the collar on the pet's neck every 1 to 2 hours.
- Check the fit to prevent excessive pressure; follow the instructions in this manual.
- Never connect a lead to the electronic collar; it will cause excessive pressure on the contacts.
- When using a separate collar for a lead, don't put pressure on the electronic collar.
- Wash your pet's neck area and the contacts of the collar weekly with a damp cloth.
- Examine the contact area daily for signs of a rash or a sore.
- If a rash or sore is found, discontinue use of the collar until the skin has healed.
- If the condition persists beyond 48 hours, see your veterinarian.
- For additional information on bed sores and pressure necrosis, please visit our website.

CAUTION These steps will help keep your pet secure and comfortable. Millions of pets are comfortable while they wear stainless steel contacts. Some pets are sensitive to contact pressure. You may find after some time that your pet is very tolerant of the collar. If so, you may relax some of these precautions. It is important to continue daily checks of the contact area. If redness or sores are found, discontinue use until the skin has fully healed.

- You may need to trim the hair in the area of the Contact Points. Never shave your pet's neck; this may lead to a rash or infection.
- Always remove your pet's Receiver Collar before performing any Transmitter testing.
- The Receiver Collar should not be on your pet when the system is tested. Your pet may receive an unintended correction.
- The Boundary Zone must be tested whenever an adjustment is made to the Transmitter setting to prevent unintended corrections to your pet.
- If you use a collar and leash for training, be sure the extra collar does not put pressure on the contact points.
- To prevent an unintended correction, remove the Receiver Collar from your pet when indoors.
- Never remove power from the system when the collar is on the pet. This may activate the Receiver Collar.
- Radio Systems® Corporation recommends the use of an Uninterruptible Power Supply (UPS) for use with your wireless fence. Should the power go out at your home, your pet will be unprotected. Power outages can be unpredictable, and the use of a UPS will provide you with some time to properly restrain your pet.

In rare instances, if your pet is near the boundary at the time when the power fails, it is possible that your pet will receive a correction. This correction will stop after a 15 second time out period has been reached. This is due to the operation of the collar: the collar is activated by the absence of the containment signal.

While results will vary depending on the UPS manufacturer's specifications the following are typical examples to guide your choice of UPS:

- Using a 400 VA UPS a consumer should expect 3 hours of backup time.
- Using a 900 VA UPS a consumer could expect 8 hours of backup time.

If settings below maximum fence size are used, additional backup time will result. At minimum fence size settings backup time may be more than two times the backup time estimated at maximum fence size.

NOTICE

- To prevent an unintended correction, after the Boundary Flags have been placed, be sure to set the Static Correction on the Receiver Collar back to level 1 tone only.
- Do not place anything on the top of the Transmitter or cover any ventilation holes. This may overheat the Transmitter and cause early transmit failure.
- Do not place Transmitter in a closet or any other confined, unventilated area.
- Do not place Transmitter on a metal surface.

Warranty

One Year Non-Transferrable Limited Warranty

This Product has the benefit of a limited manufacturer's warranty. Complete details of the warranty applicable to this Product and its terms can be found at www.petsafe.net and/ or are available by contacting your local Customer Care Center.

United States and Canada – Radio Systems Corporation, 10427 PetSafe Way, Knoxville, TN 37932 USA

Australia/New Zealand – In compliance with the Australian Consumer Law, Warranties Against Defects, effective January 1, 2012, warranty details of this Product are as follows:

One Year Non-Transferrable Limited Warranty

What is covered: Radio Systems Australia Pty Ltd. (hereinafter referred to as "Radio Systems") warrants to the original retail purchaser, and not any other purchaser or subsequent owner, that its product, when subject to normal and proper residential use, will be free from defects in material or workmanship for a period of one (1) year from the purchase date. An "original retail consumer purchaser" is a person or entity who originally purchases the Product, or a gift recipient of a new product that is unopened and in its original packaging. When serviced by Radio Systems Customer Service, Radio Systems covers labour and parts for the first year of ownership; after the first year, a service or upgrade charge will apply relative to replacement of the product with new or refurbished items at Radio Systems' sole discretion.

The limited warranty is non-transferrable and shall automatically terminate if the original retail consumer purchaser resells the Radio Systems product or transfers the property on which the Radio Systems product is installed. This Limited Warranty excludes accidental damage due to dog chews; lightning damage; or neglect, alteration, and misuse. Consumers who purchase products outside of Australia, New Zealand, or from an unauthorized dealer will need to return the Product to the original place of purchase for any warranty issues.

Please note that Radio Systems does not provide refunds, replacements, or upgrades for change of mind, or for any other reason outside of these Warranty terms.

Claims Procedure: Any claim made under this Warranty should be made directly to Radio Systems Australia Pty Ltd. Customer Care Centre at:

Radio Systems Australia Pty Ltd.
PO Box 7266, Gold Coast Mail Centre QLD 9726

Australia Residents: 1 800 786 608
New Zealand Residents: 0800 543 054
Email: info@petsafeaustralia.com.au

To file a claim, a proof of purchase must be provided. Without a proof of purchase, Radio Systems will not repair or replace faulty components. Radio Systems requests the Consumer to contact the Radio Systems Customer Care Centre to obtain a Warranty Return number, prior to sending the Product. Failure to do so may delay in the repair or replacement of the Product.

If the Product is deemed to be faulty within 30 days from date of original purchase, Radio Systems will organise for a replacement to be sent in advance of returning the faulty Product. A Post Bag will be included with the replacement Product for the return of the faulty Product. The Product must be returned within 7 days of receiving the replacement. If the Product is deemed to be faulty after 30 days from the date of original purchase, the consumer will be required to return the Product to Radio Systems at the consumer's own expense. Radio Systems will test and replace the faulty unit or its components and return to the consumer free of charge, provided the Product is within its said warranty period. This warranty is in addition to other rights and remedies available to you under the law. Radio Systems goods come with guarantees that cannot be excluded under the Australia Consumer Law. You are entitled to a replacement or refund for a major failure and for compensation for any other reasonably foreseeable loss or damage. You are also entitled to have the goods repaired or replaced if the goods fail to be of acceptable quality and the failure does not amount to a major failure. Should you have any queries or require any further information, please contact our Customer Care Centre on 1800 786 608 (Australia) or 0800 543 054 (New Zealand).

Terms of Use and Limitation of Liability

1. Terms of Use

This Product is offered to you conditioned upon your acceptance without modification of the terms, conditions and notices contained herein. Usage of this Product implies acceptance of all such terms, conditions, and notices.

2. Proper Use

This Product is designed for use with pets where training is desired. The specific temperament of your pet may not work with this Product. If you are unsure whether this is appropriate for your pet, please consult your veterinarian or certified trainer.

3. No Unlawful or Prohibited Use

This Product is designed for use with pets only. This pet training device is not intended to harm, injure or provoke. Using this Product in a way that is not intended could result in violation of Federal, State or local laws.

4. Limitation of Liability

In no event shall Radio Systems Corporation be liable for any direct, indirect, punitive, incidental, special or consequential damages, or any damages whatsoever arising out of or connected with the use or misuse of this Product. Buyer assumes all risks and liability from the use of this Product.

5. Modification of Terms and Conditions

Radio Systems Corporation reserves the right to change the terms, conditions and notices under which this Product is offered.

Compliance

FCC/IC

This Class B digital apparatus complies with Canadian RSS-310. This equipment has been tested and found to comply with the limits for a Class B digital device, pursuant to Part 15 of the FCC Rules. These limits are designed to provide reasonable protection against harmful interference when the equipment is operated in a residential environment. This equipment generates, uses, and can radiate radio frequency energy and, if not installed and used in accordance with the instruction guide, may cause harmful interference to radio communications. However, there is no guarantee that interference will not occur in a practical installation. If this equipment causes harmful interference to radio or television reception, which can be determined by turning the equipment off and on, the user is encouraged to try to correct the interference by one or more of the following measures:

- Relocate the interfered receiving antenna.
- Increase the separation between the equipment and receiver.
- Connect the equipment into an outlet on a circuit different from that to which the receiver is connected.
- Contact the Customer Care Center at 1-800-732-2677.

This device complies with Industry Canada Rules. This device complies with part 15 of the FCC Rules. Operation is subject to the following two conditions: (1) This device may not cause harmful interference, and (2) this device must accept any interference received, including interference that may cause undesired operation.

Unauthorized changes or modifications to the equipment, not approved by Radio Systems® Corporation, could result in not meeting compliance with FCC regulations and could void the user's authority to operate the equipment.

ACMA/Australia

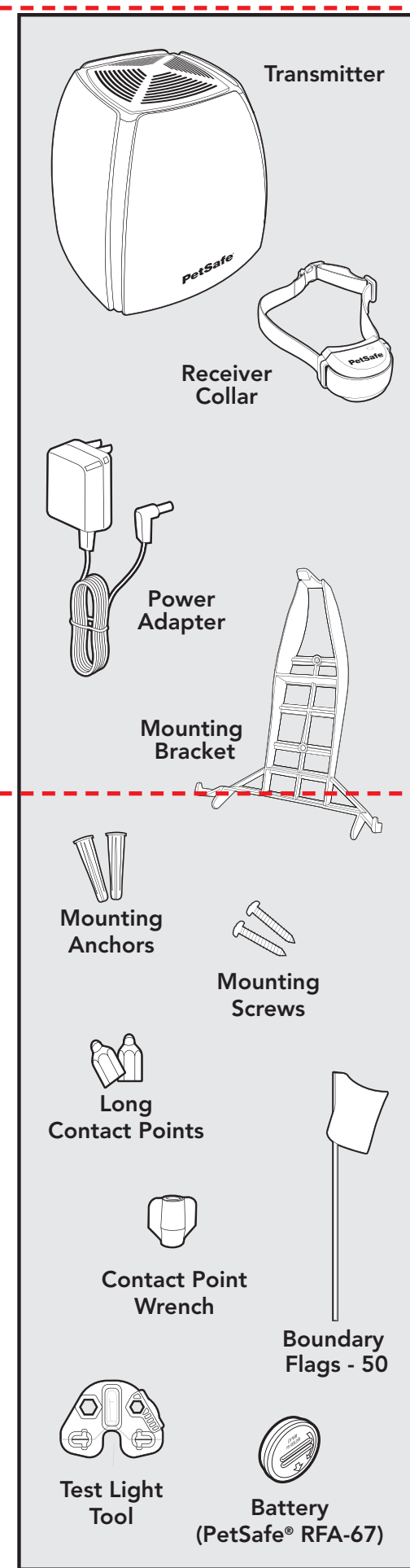
This device complies with the applicable EMC requirements specified by the ACMA (Australian Communications and Media Authority).

Battery Disposal

Separate collection of spent batteries is required in many regions; check the regulations in your area before discarding spent batteries. At the end of the product life, please contact our Customer Care Center to receive instructions on proper disposal of the unit. Please do not dispose of the unit in household or municipal waste. For a listing of Customer Care Center telephone numbers in your area, visit our website at www.petsafe.net.

Perchlorate Battery

Perchlorate Material – special handling may apply. See www.dtsc.ca.gov/hazardouswaste/perchlorate.



How the System Works

The PetSafe® Free to Roam Wireless Fence™ system has been proven safe, comfortable, and effective for pets over 5 pounds. The system works by transmitting a radio signal up to 90 feet in all directions. You temporarily define the Pet Area with Boundary Flags for a visual aid in training your pet. Your pet wears a Receiver Collar with Contact Points that touch his neck, and, once trained, is allowed to roam freely in the Pet Area. When your pet reaches the Boundary Zone, the Receiver Collar gives a warning tone before delivering a safe Static Correction through the Contact Points to get his attention until he returns to the Pet Area. The Pet Area cannot be changed into a square or rectangle shape. Metal objects, a sloping yard, a yard with hills may affect operating range. Consider repositioning the transmitter to maximize your Pet Area.

Key Definitions

Transmitter: Transmits the radio signal and is the center of the Pet Area. The Transmitter needs to be located indoors.

Pet Area: Distance from the Transmitter where your pet can roam freely.

Boundary Zone: 2 to 3 foot wide area outside the Pet Area where your pet's Receiver Collar will begin to tone and then begin to deliver a Static Correction. The correction will start in the Boundary Zone and continue anywhere beyond the Pet Area.

Note: The Receiver Collar is equipped with a safety time-out feature that will stop correcting after 15 seconds if your pet remains outside the pet area.

Mode Button: Turns Receiver ON/OFF and adjusts the level of Static Correction your pet receives outside the Pet Area.

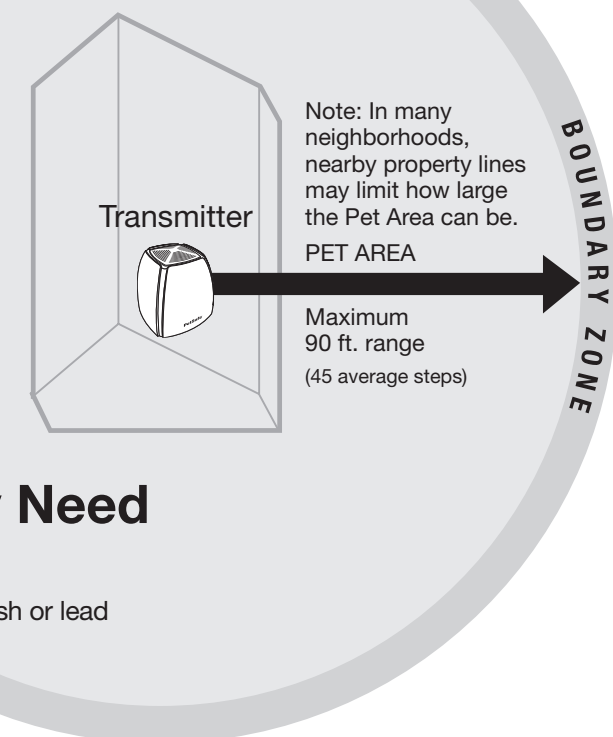
Boundary Switch: Adjust according to the size of the Pet Area desired. Low Range of 5-45 ft. is "-"; High Range of 5-90 ft. is "+".

Boundary Control Dial: Adjusts the distance from the Transmitter to the Boundary Zone.

Receiver Collar: Receives the radio signal from the Transmitter.

Receiver Indicator Light: Indicates the level of correction at which the Receiver Collar is set. This light also serves as a low battery indicator.

The Wireless Transmitter creates a circular containment area for your pet. The transmitter is at the center of the circle.



Other Items You May Need

- Scissors
- Drill
- Lighter
- Tape measure
- Screw Driver
- Non-Metallic Collar and leash or lead

Thank you for choosing PetSafe® brand. You and your pet deserve a companionship that includes memorable moments and a shared understanding together. Our products provide you with the tools and technologies to successfully train your pet. If you have any questions about our products or training your pet, please visit our website at www.petsafe.net or contact our Customer Care Center at 1-800-732-2677. To get the most protection out of your warranty, please register your product within 30 days at www.petsafe.net. By registering and keeping your receipt, you will enjoy the product's full warranty and should you ever need to call the Customer Care Center, we will be able to help you faster. Most importantly, we will never give or sell your valuable information to anyone. Complete warranty information is available online at www.petsafe.net.

Radio Systems Corporation
10427 PetSafe Way
Knoxville, TN 37932
1-800-732-2677
www.petsafe.net

Protected by US Patents 6,879,300; 6,921,089; 7,142,167 and D515,027.

©2015 Radio Systems Corporation

Visit www.petsafe.net for further instructions on training and set-up.

If you have any issues, please feel free to contact our Customer Care Center 1-800-732-2677.

Operating Guide

Step 1: Set up the Transmitter

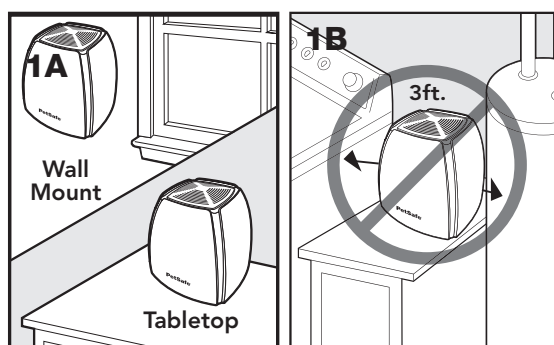
Important: You may need to move the Transmitter several times before determining the final location. Do not mount the transmitter until you are satisfied with the containment area the transmitter creates for your pet.

The Transmitter is located at the exact center of the Pet Area.

Place the transmitter:

- At least 2 feet above the floor located on the ground floor of your home.
- In a dry, well ventilated, protected area.
- In an area where temperatures do not fall below -10° F.
- Mounted to a wall, on a non-metal table or other hard surface to ensure proper ventilation (1A).
- At least 3 feet from large metal objects, as these items may reduce the size and shape of your Pet Area (1B).
- Placing the Transmitter inside a metal building or shed can reduce the maximum range of the system.
- Near a standard wall outlet.

See Manual for Transmitter mounting instructions.

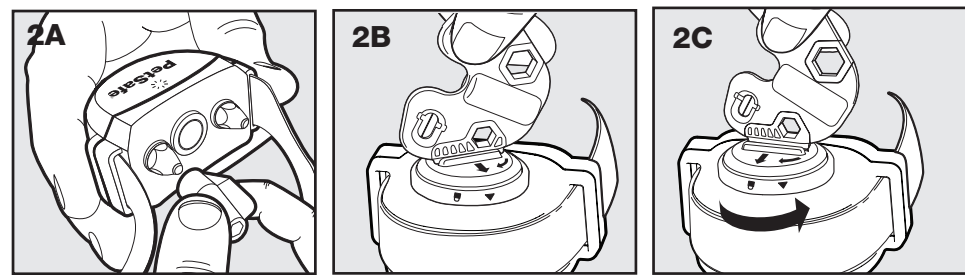


Step 2: Prepare the Receiver Collar

Your Receiver Collar comes with short Contact Points installed. Use the Long Contact Points for pets with long or thick hair. Tighten the Contact Points using the Contact Point Wrench (2A). Check tightness weekly.

To Insert and Remove the Receiver Collar Battery

Note: Do not install the battery while the Receiver Collar is on your pet. This Receiver Collar utilizes a replaceable PetSafe® battery (RFA-67). This unique battery is designed to make battery replacement easier and increase water protection. Once you insert the battery and turn it to the lock position, the unit will be turned ON.



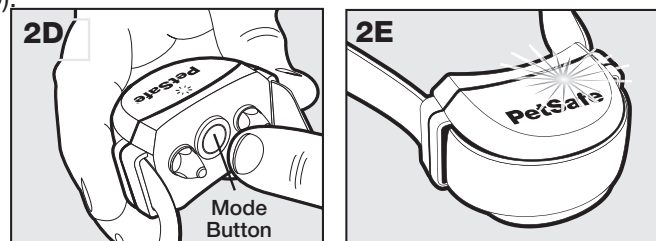
To insert the battery, align the symbols on the battery (arrow) and Receiver Collar (triangle) (2B). Use the edge of the Test Light Tool (2B) to turn the battery clockwise until the arrow lines up with the lock symbol on the housing.

To remove the battery, turn the battery counter-clockwise using the edge of the Test Light Tool (2C). DO NOT attempt to cut into or pry open the battery. Be sure to discard the used battery properly.

Before replacing the battery, discharge all power by holding the Mode Button down at least 30 seconds until the LED is no longer illuminated.

Turning the Receiver Collar ON

Press and hold the Mode Button continuously for 5 seconds (2D). The green or red Receiver Indicator Light will turn ON for 5 seconds (2E) to indicate battery status, followed by the red Receiver Indicator Light flashing the Static Correction Level Settings. The indicator light will then flash the battery status for 30 seconds. Refer to the table below.



Turning the Receiver Collar OFF

Press and hold the Mode Button continuously for 5 seconds. The red Receiver Indicator Light will be ON during this time. The red Receiver Indicator Light will then turn OFF and all Receiver Indicator Lights will stay OFF indicating that the unit is turned OFF.

To Set the Static Correction Level

Read all steps before attempting to set the Static Correction Level.

1. Press the Mode Button and release (2D) when the Receiver Indicator Light illuminates Red (2E).
2. The Receiver Indicator Light will emit a series of red flashes representing the Static Correction Level.
3. Increase the Static Correction Level by pressing and releasing the Mode Button within 5 seconds of the previous series of flashes. The Static Correction levels increase in strength from 1 to 6. Pushing the Mode Button while the Receiver Collar is on level 6 will cause the Receiver Collar to revert to level 1. Refer to the Function and Response Table to choose the Static Correction level that best fits your pet.

Over Correction Protection

If your pet enters the Boundary Zone or continues anywhere beyond the Pet Area, this feature limits the Static Correction duration to 15 seconds. While the system locks out further Static Correction, the Green light will remain ON for 10 seconds.

In the unlikely event that your pet leaves the Pet Area, he will not receive a Static Correction upon return to the Pet Area.

Function and Response Table

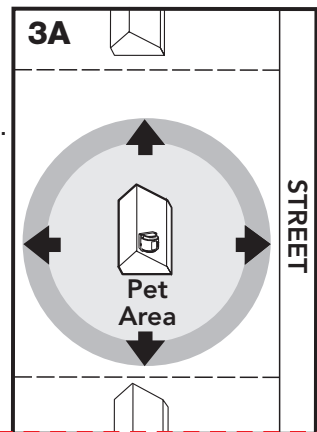
Indicator Light Response	Static Correction Level	Receiver Collar Function	Temperament of Pet
1 Red Flash	1	No Static Correction, Tone Only	Initial Training Mode
2 Red Flashes	2	Low Static Correction	Timid
3 Red Flashes	3	Medium-Low Static Correction	Timid or Average
4 Red Flashes	4	Medium Static Correction	Average Energy
5 Red Flashes	5	Medium-High Static Correction	Average or High Energy
6 Red Flashes	6	High Static Correction	High Energy
Slow blinking green every 4-5 seconds (for the first 30 seconds)		Indicates Battery Status Green = Good	
Slow blinking red every 4-5 seconds		Indicates Battery Status Red = Replace	

Step 3: Adjust the Pet Area to Desired Size

Make sure the entire Pet Area lies within your property boundaries (3A). Always start determining the Boundary Zone at the shortest distance from the Transmitter. Place the Boundary Switch on "-" if the Boundary Zone will be less than 45 feet from the Transmitter. For larger Pet Areas, make sure the Boundary switch is on "+" and the Boundary Control Dial is set to "8" (3B). Plug Power Adapter into Power Jack and standard 120 volt outlet. Turn the Transmitter ON. See the Transmitter Range Chart below for approximate settings and distances.

Test Light Instructions

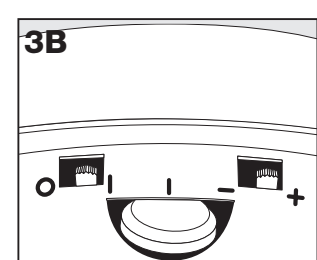
1. Make sure the Receiver Collar battery is properly installed.
2. Set the Correction Level to 2 or above.
3. Hold the Test Light Contacts to the Contact Points (3C).
4. Hold the Receiver Collar at your pet's neck height (3D) with the logo side facing away from the Transmitter and the Contact Points facing upwards.



When the collar tones and the Test Light illuminates, this represents the Boundary Zone (3E). To adjust the Pet Area either turn the Boundary Control Dial SLOWLY up or down to change the size or move the Transmitter within your home to adjust the location of the Pet Area.

Adjust Boundary to achieve the desired distance/range.

Test at multiple locations around the Pet Area.



Transmitter Range Chart

Boundary Control Dial Position	Boundary Switch "-"	Boundary Switch "+"
1	5-10 ft.	5-10 ft.
2	5-10 ft.	5-10 ft.
3	15-20 ft.	25-35 ft.
4	20-25 ft.	42-55 ft.
5	25-30 ft.	55-65 ft.
6	35-40 ft.	75-85 ft.
7	40-45 ft.	85-90 ft.
8	40-45 ft.	85-90 ft.

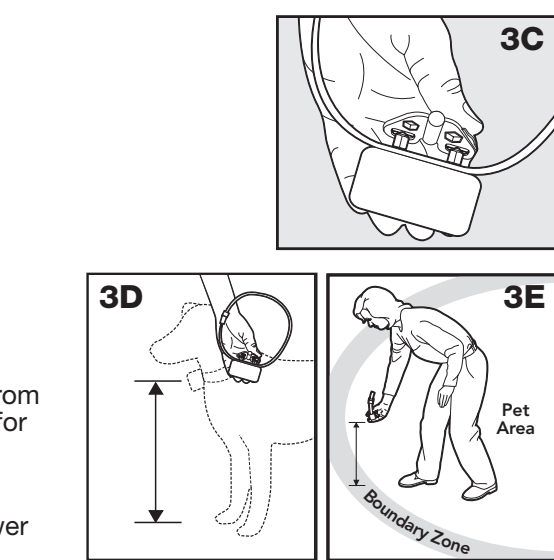
Note: These distances are approximate.

The Transmitter has a built-in Power Loss Alarm that sounds a tone indicating power has been removed from the Transmitter. If power is removed from the unit, your pet is no longer contained. The alarm will sound for at least 20 minutes. There are 2 ways to turn off the Power Loss Alarm:

1. Plug the power cord back into a functional 120-volt outlet, restoring power to the unit.
2. Unplug the power adapter from the power jack located on the bottom of the Transmitter, indicating power is intentionally being suspended.

Step 4: Place the Boundary Flags

1. Using the Test Light, with the Static Correction level set at 2 or greater, hold the Receiver Collar at your pet's neck height with logo side facing away from the Transmitter.
2. Walk towards the Boundary Zone until the Receiver Collar tone sounds and the Test Light flashes. (4A).
3. Place a Boundary Flag in the ground (4B).
4. Walk back into the Pet Area until the repeating tone stops.
5. Repeat this process around the Boundary Zone until it is marked with Boundary Flags every 10 ft.

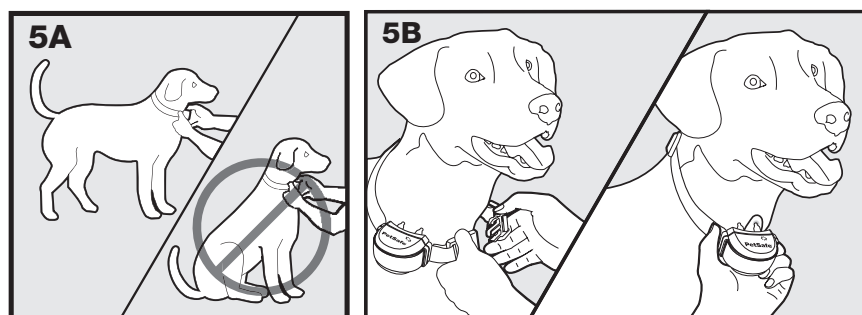


Step 5: Fit the Receiver Collar

Important: The proper fit and placement of your Receiver Collar is important for effective training. The Contact Points must have direct contact with your pet's skin on the underside of his neck.

To assure a proper fit, please follow these steps:

1. Make sure that the battery is not installed in the Receiver Collar.
2. Start with your pet standing comfortably (5A).
3. Place the Receiver Collar on your pet with the logo side of Receiver facing up.
4. Center the Contact Points underneath your pet's neck, touching the skin.
5. Check the tightness of the Receiver Collar by inserting one finger between the end of a Contact Point and your pet's neck. The fit should be snug but not constricting (5B).
 - a. Allow your pet to wear the collar for several minutes then recheck the fit.
 - b. Check the fit again as your pet becomes more comfortable with the Receiver Collar.
6. Trim the Collar (see manual for details).

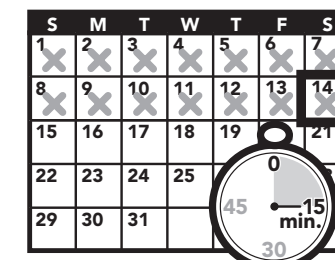


Training Guide

Be Patient With Your Pet

Important: Proper training of your pet is essential to the success of the PetSafe® Free to Roam Wireless Fence™ system. Read this section completely before beginning to train your pet. Remember that the PetSafe Free to Roam Wireless Fence system is not a solid barrier.

- Have fun with your pet throughout the training process. Training should be fun, fair, firm and consistent.
- Train for 10 to 15 minutes at a time. Don't try to do too much too quickly. More-frequent short sessions are better than less-frequent longer sessions.
- We suggest a minimum of 14 days of training. Depending on your pet and how he learns, the training could take more or less time.
- If your pet shows signs of stress, slow down the training schedule, add additional days of training, or increase the amount of play time with your pet in the Pet Area.
- Common stress signals include:
 - Pet pulling on leash toward the house
 - Ears tucked
 - Tail down
 - Body lowered
 - Nervous / frantic movement or stiffening of pet's body
- Your pet must be completely comfortable near the Boundary Flags at the end of every training session. Spend at least 5 minutes of "play time" at the completion of each session within 10 feet of the Boundary Flags.
- Finish each training session on a positive note with lots of praise and play.
- Remove the Receiver Collar after each training session.
- Be sure to contain your pet by another means during the training period (e.g. pen, tie-out, leash, etc.).
- During training, if you need to take your pet out of the Pet Area, remove the Receiver Collar and either pick your pet up or put him in the car to pass out of the Pet Area.
- Even if you think your pet is responding well to the training, complete the entire training. Reinforcement is important!



Phase 1

Day 1 - Boundary Awareness

Tone Only Training Mode

Perform three sessions on Day 1, each training session lasting 10-15 minutes.

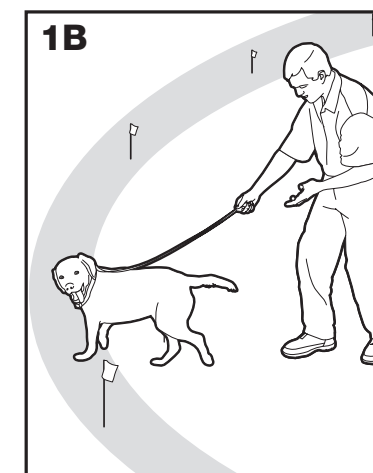
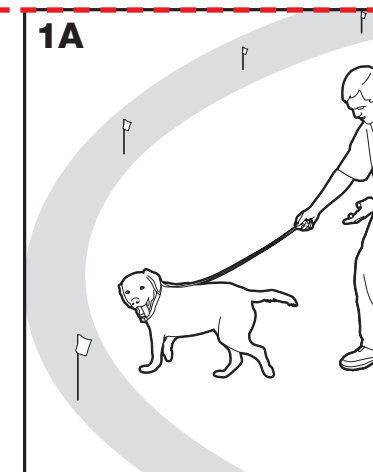
Goal: To have your pet learn that the Boundary Flags and warning tone from the Receiver Collar define the new Pet Area.

Setup:

- Program the Static Correction Level on the Receiver Collar to Level 1 Tone Only training mode.
- Put a separate non-metallic collar on your pet's neck ABOVE the Receiver Collar and attach a leash.
- Have tiny pieces of treats that your pet will find desirable available (hot dogs or lunch meat work well).
- Have your pet's favorite play toy available.

Steps:

1. Begin by walking your pet on a leash in the Pet Area. Calmly praise and talk to your pet.
2. Move toward the Boundary Flags (1A). Keep your mood happy.
3. With full control of your pet on a leash, walk to the flags. As your pet enters the Boundary Zone, the Receiver Collar will begin to tone (1B). Allow your pet to stay in the Boundary Zone for up to 2 seconds then gently help him back into the Pet Area (1C). Immediately praise and offer your pet a treat as he enters the Pet Area, even if you have helped with the leash.
4. Repeat this process at the same Boundary Flag until your pet resists going into the Boundary Zone.
5. Aim to master 3-4 Boundary Flags per session. Make this FUN! Praise if your pet quickly retreats or resists going into the Boundary Zone.



Phase 2

Days 2 thru 4 - Continue Boundary Awareness

Introduction to Static Correction

Perform three sessions per day, each lasting 10-15 minutes.

Goal: To train your pet to stay in the Pet Area and respect the boundary.

Setup:

- Program the Static Correction Level on the Receiver Collar to Level 2.
- Put a separate non-metallic collar on your pet's neck ABOVE the Receiver Collar and attach a leash.
- Have tiny pieces of treats that your pet will find desirable available (hot dogs or lunch meat work well).
- Have your pet's favorite play toy available.

Steps:

1. Repeat steps 1-5 in Phase One.
2. If your pet does not respond to the Static Correction, confirm that the Receiver Collar is fitting properly according to Step 5.
3. If the Receiver Collar is fitted properly and your pet does not respond to the Static Correction, increase the Static Correction Level by 1. Watch for slight reactions at first such as ears up, head turned, looking at the ground.
4. Stay at the same flag until your pet resists going into the Boundary Zone.

Phase 3

Days 5 thru 8 - Distraction Phase

Perform three training sessions per day, each lasting 10 to 15 minutes.

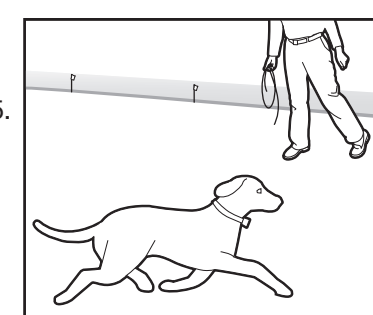
Goal: To train your pet to stay within the Pet Area with distractions outside of the Pet Area.

Setup:

- Program the Static Correction Level on the Receiver Collar to level 2 or higher depending on the reaction results from days 2 thru 4.
- Put a separate non-metallic collar on your pet's neck ABOVE the Receiver Collar and attach a leash.
- Have tiny pieces of treats available (hot dogs or lunch meat work well).
- Have your pet's favorite play toy available.
- Create distractions to tempt your pet to enter the Boundary Zone, such as:
 - Have a family member cross from inside the Pet Area to outside of it.
 - Throw a ball or treat outside of the Pet Area.
 - Have a neighbor walk their pet outside of the Pet Area.
- Gradually increase distraction level. **Never coax or call your pet out of the Pet Area.**

Steps:

1. With full control of your pet on a leash, have the distraction presented.
2. If your pet does not move toward the distraction, praise and offer a treat.
3. If your pet does react to the distraction, allow him to go into the Boundary Zone.
4. Help your pet back into the Pet Area if he does not turn back after 2 seconds.
5. Treat and praise your pet anytime he comes back into the Pet Area with or without help.
6. Repeat this process with other distractions. Use other family members during this process.
7. If your pet does not respond to the Static Correction, confirm that the Receiver Collar is fitting properly according to Step 5.
8. If the Receiver Collar is fitted properly and if your pet does not respond to the Static Correction, increase the Static Correction Level by 1.



Phase 4

Days 9 thru 14 - Unleashed Supervision

Training sessions should start at 10-15 minutes, gradually increasing to over an hour.

Your pet is ready for this step only when he clearly avoids the entire Boundary Zone, regardless of any distractions or temptations. During this step, do not leave your pet unattended.

Goal: To give your pet free run of the Pet Area off the leash.

Setup:

Adjust the Receiver Collar to the permanent setting appropriate for your pet.

Steps:

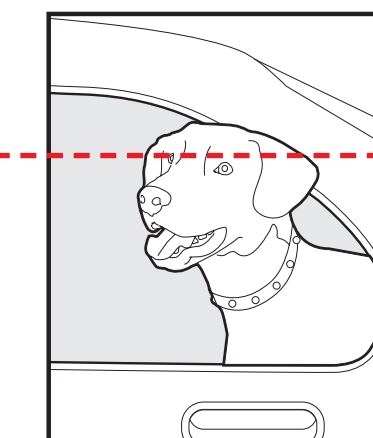
- Enter the Pet Area with your pet wearing the Receiver Collar.
- Walk around the yard and play with your pet, staying within the Pet Area at all times.
- Preoccupy yourself with another task in the yard while watching your pet.
- Should your pet escape, take the Receiver Collar off and lead him back into the Pet Area.

Phase 5

Days 15 thru 30 - Pet Monitoring

Your pet is ready to run! Check in on your pet at regular intervals.

Note: After you are satisfied your pet's training is complete, remove every other Boundary Flag every 4 days until all flags are removed. Save Boundary Flags for future use.



Taking Your Pet Out of the Pet Area

Important: Remove the Receiver Collar and leave it in the Pet Area.

Once your pet learns the Boundary Zone, he will be reluctant to cross it for walks or car rides.

Option 1: Replace the Receiver Collar with a regular collar. Put your pet in a car that is within the Pet Area and drive him out of the Pet Area.

Option 2: Replace the Receiver Collar with a regular collar and leash. Walk your pet out of the Pet Area while giving a command such as "OK" at a specific place of the Boundary Zone (the end of your driveway, sidewalk, etc.). Always leave the Pet Area with a leash at this place and your pet will associate leaving the Pet Area only on a leash, only at this place, and only with a person. You may initially need to convince your pet to leave the Pet Area with a food treat and lots of praise.

Note: You may also carry your pet out of the Pet Area.

Congratulations!
You have now successfully
completed the training program.