

**MASTER
WORKS™**

MODEL: MW110D

20V



20V AUTOMATIC CORDLESS INFLATOR

Operator's Manual

SAVE THIS MANUAL

You will need this manual for safety instructions, operating procedures and warranty. Put it and the original sales receipt in a safe dry place for future reference. If you have a question or experience a problem with your purchase, please contact us via E-mail service@masterworkstool.com or call 1-866-458-2320.

TABLE OF CONTENTS

■ IMPORTANT SAFETY INSTRUCTIONS-----	P.2
■ SAFETY PRECAUTIONS FOR INFLATOR-----	P.3
■ SPECIFICATIONS -----	P.4
■ FUNCTIONAL DESCRIPTION-----	P.5
■ OPERATION-----	P.6
■ MAINTENANCE -----	P.9
■ PARTS LIST AND SCHEMATIC DRAWING-----	P.10

IMPORTANT SAFETY INSTRUCTIONS

WARNING: READ AND UNDERSTAND ALL INSTRUCTIONS. Failure to follow all instructions listed below, may result in electric shock, fire and/or serious personal injury.



WARNING: When using electric appliances, basic precautions should always be followed, including the following:



SAVE THESE INSTRUCTIONS WORK AREA

1. **Keep your work area clean and well lit. Cluttered benches and dark areas invite accidents.** Keep bystanders, children, and visitors away while operating an inflator. Distractions can cause you to lose control.
2. **Operate inflator in an open area at least 18 in.** away from any wall or object that could restrict the flow of fresh air to ventilation openings.

ELECTRICAL SAFETY

1. **To reduce the risk of electrical shock, do not put inflator in water or other liquid.** Do not place or store appliance where it can fall or be pulled into a tub or sink.
2. Use this product only with batteries and chargers.

PERSONAL SAFETY

1. **Stay alert, watch what you are doing and use common sense when operating an inflator.** Do not use inflator while tired or under the influence of drugs, alcohol, or medication. A moment of inattention while operating inflator may result in serious personal injury.
2. **Dress properly. Do not wear loose clothing or jewelry. Contain long hair.** Keep your hair, clothing, and gloves away from moving parts. Loose clothes, jewelry, or long hair can be caught in moving parts.
3. **Do not overreach. Keep proper footing and balance at all times.** Proper footing and balance enable better control of the inflator in unexpected situations.
4. **Use safety equipment. Always wear eye protection.** Dust mask, non-skid safety shoes, hard hat, or hearing protection must be used for appropriate conditions.
5. **Eye protection is required to guard against flying fasteners and debris which could cause severe eye injury.**
6. **Do not wear loose clothing or jewelry.** Contain long hair. Loose clothes, jewelry, or long hair can be drawn into air vents.
7. **Do not use on a ladder or unstable support.** Stable footing on a solid surface enables better control of the inflator in unexpected situations.
8. **Do not disassemble the inflator.**
9. **Do not operate inflator near flammable liquids or in gaseous or explosive atmospheres.** Internal sparks may ignite fumes.
10. **Do not store your inflator in a damp or wet location.** Do not store in locations where the temperature is less than 50°F or more than 100°F. Do not store in outside sheds or in vehicles.

IMPORTANT SAFETY INSTRUCTIONS

INFLATOR USE AND CARE

1. **Check hoses for weak or worn condition before each use, making certain all connections are secure.** Do not use if defect is found. Purchase a new hose or notify an authorized service center for examination or repair.
2. **Release all pressures within the system slowly.** Dust and debris may be harmful.
3. **Do not use inflator if switch does not turn it on or off.** An inflator that cannot be controlled with the switch is dangerous and must be repaired.
4. **Place the switch off position before making any adjustments, changing accessories, or storing the inflator.** Such preventive safety measures reduce the risk of starting the inflator accidentally.
5. **Store idle inflators out of reach of children and other untrained persons.** Inflators are dangerous in the hands of untrained users.
6. **Check for misalignment or binding of moving parts, breakage of parts, and any other condition that may affect the inflator's operation.** If damaged, have the inflator serviced before using. Many accidents are caused by poorly maintained tools.
7. **Use only accessories that are recommended by the manufacturer for your model.** Accessories that may be suitable for one inflator may create a risk of injury when used on another inflator.
8. **Keep the inflator and its handle dry, clean and free from oil and grease.** Always use a clean cloth when cleaning. Never use brake fluids, gasoline, petroleum-based products, or any strong solvents to clean your inflator. Following this rule will reduce the risk of loss of control and deterioration of the enclosure plastic.
9. **Never point any inflator toward yourself or others.**
10. **Keep the exterior of the inflator dry, clean, and free from oil and grease.** Always use a clean cloth when cleaning. Never use brake fluids, gasoline, petroleum-based products, or any strong solvents to clean the unit. Following this rule will reduce the risk of deterioration of the enclosure plastic.
11. **Do not exceed the pressure rating of any component in the system.**
12. **Protect material lines and air lines from damage or puncture.** Keep hose and power cord away from sharp objects, chemical spills, oil, solvents, and wet floors.

SERVICE

1. **Inflator service must be performed only by qualified repair personnel.** Service or maintenance performed by unqualified personnel may result in a risk of injury.
2. **When servicing an inflator, use only identical replacement parts.** Follow instructions in the Maintenance section of this manual. Use of unauthorized parts or failure to follow Maintenance instructions may create a risk of shock or injury.

SAFETY PRECAUTIONS FOR INFLATOR

1. **Know your inflator.** Read operator's manual carefully. Learn its applications and limitations, as well as the specific potential hazards related to this tool. Following this rule will reduce the risk of electric shock, fire, or serious injury.
2. **Risk of bursting.** Do not operate inflator to result in output pressure greater than marked maximum pressure of item to be inflated. Do not use at pressure greater than 6.8 Bar.
3. **To reduce the risk of electric shock, do not expose to rain.** Store indoors.
4. **Inspect unit for cracks, pin holes, or other imperfections that could cause inflator to become unsafe.** Never cut or drill holes in the inflator.
5. **Make sure the hose is free of obstructions or snags.** Entangled or snarled hoses can cause loss of balance or footing and may become damaged.
6. **Use the inflator only for its intended use.** Do not alter or modify the unit from the original design or function.
7. **Always be aware that misuse and improper handling of this inflator can cause injury to yourself and others.**
8. **Never leave an inflator unattended with the air hose attached to the item being inflated.**
9. **Do not continue to use an inflator or hose that leaks air or does not function properly.**

SAFETY PRECAUTIONS FOR INFLATOR

10. Always disconnect the air supply and power supply before making adjustments, servicing an inflator, or when an inflator is not in use.
11. Do not attempt to pull or carry the inflator by the hoses.
12. Always follow all safety rules recommended by the manufacturer of your inflator, in addition to all safety rules for the inflator. Following this rule will reduce the risk of serious personal injury.
13. Household use only.
14. Do not use inflator as a breathing device.

SAFETY PRECAUTIONS FOR INFLATOR

15. Never direct a jet of compressed air toward people or animals. Take care not to blow dust and dirt towards yourself or others. Following this rule will reduce the risk of serious injury.
16. Protect your lungs. Wear a face or dust mask if the operation is dusty. Following this rule will reduce the risk of serious personal injury.
17. Do not use this inflator to spray chemicals. Your lungs can be damaged by inhaling toxic fumes.
18. Check damaged parts. Before further use of the inflator or air tool, a guard or other part that is damaged should be carefully checked to determine that it will operate properly and perform its intended function. Check for alignment of moving parts, binding of moving parts, breakage of parts, mounting, and any other conditions that may affect its operation. A guard or other part that is damaged should be properly repaired or replaced by an authorized service center. Following this rule will reduce the risk of shock, fire, or serious injury.
19. Inspect tool cords periodically and, if damaged, have repaired at your nearest Authorized Service Center. Constantly stay aware of cord location. Following this rule will reduce the risk of electric shock or fire.
20. Risk of bursting. Carefully monitor objects during inflation.
21. To reduce the risk of over inflation, use a reliable pressure gauge periodically during inflation. The pressure gauge on the inflator is for reference only and is therefore not binding for exact values.
22. Never leave the inflator unattended during inflation.
23. Allow pump to cool for five (5) minutes after each five (5) minutes of continuous use. Never block the inflating or deflating outlets while operating.
24. Save these instructions. Refer to them frequently and use them to instruct others who may use this inflator. If you loan someone this inflator, loan them these instructions also.

SPECIFICATIONS

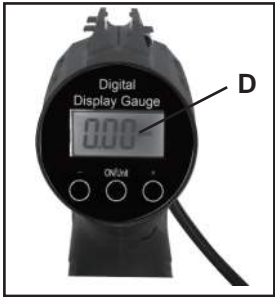
- Great for Car/RV/SUV Tires and small inflatables
- Digital pressure gauge automatically shuts off at desired pressure
- Cordless design for convenience
- Comes with nozzle accessories
- Operate from 20V Battery (included) or 12V Power Adapter
- Built in battery indicator

INCLUDES:

- 1- Nozzle, 1- Ball Needle,
- 1- 12V Car Plug-in Power Base
- 1-20V Li-ion Battery
- 1-charger
- 1-Tool Bag



FUNCTIONAL DESCRIPTION



- A. Rubber-covered handle
- B. Air hose
- C. Air chuck
- D. Digital pressure gauge
- E. Hose storage area
- F. Battery
- G. Start switch
- H. Self-Locking switch
- I. 12V Power adapter
- J. LED-light
- K. Battery indicator
- L. USB Output Port

OPERATION

BATTERY PACK

WARNING:

1. The battery is not fully charged. Before first use, the battery pack requires 5-7 hours charging time to be fully charged. Subsequent recharging needs 3-5 hours for the battery to be fully charged.
2. Always switch to a fresh battery when tool performance begins to diminish. Severe heat is most destructive to a battery; the more heat generated, the faster the battery loses power. A battery that gets too hot can have a shortened life.
3. Never over-discharge a battery by using the tool even after tool performance has decreased. Do not attempt to discharge a tool's battery by continuing to pull on the tool trigger. When tool performance begins to diminish, stop the tool and recharge the battery for optimal performance.



1. Batteries will reach full performance after about five charge/discharge cycles.
2. Always have drill rotation switch in neutral/lock position when removing or inserting battery to avoid unintentional starting.
3. To remove battery pack from the tool, press the lock spring buttons and pull out.
4. To insert, simply push pack in until lock spring clicks.
5. The battery charger consists of two parts:
 - A. a switching adapter
 - B. a charging stand
6. To recharge battery, connect the switching adapter/plug low-voltage lead to the charging stand.
7. Insert the switching adapter/plug into a correct household current receptacle.
8. The end of the battery pack has positive and negative terminal markings on it. Align these with the identical markings on the top of the charging stand and insert pack into base. (Pack will not insert properly if reversed)
9. The green light is the charge indicator. When the charger is connected to AC household current, the green light is on (Fig.1).
10. The green light is the power indicator. When the battery is properly inserted into the charger and charging, the red light is on.
11. Normal charging time is 3 to 5 hours. The charger will charge the battery at the normal rate until charging is complete. The red light will turn off once charging is complete. After the battery is fully charged according to the charging time provided in the instructions, remove the battery pack from the charging stand immediately. Battery temperature will cool to normal.
12. When charging more than one battery pack, allow 15 minutes between charges.
13. After many charge/discharge cycles, your battery will lose its ability to hold a charge. It should then be replaced. Dispose of batteries at an appropriate waste disposal facility. Do not throw batteries away in common trash receptacles.

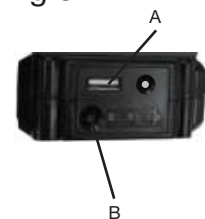
Fig.1



Fig.2



Fig.3



WARNING: When the machine is obstructed, please turn off the switch right away and check if the work piece is right. An obstruction may cause the machine motor to be burned.



REMEMBER: This tool is cordless and does not need to be connected to a power supply.



CAUTION: Do not expose either the electric tool or charger to the rain or water. Do not overcharge the battery as this could damage the battery's cells. Do not force the tool. If the tool is stalling, it is possible that the battery power is low. If so, stop working and recharge the battery pack. To prolong the life of the tool, do not continually for work more than 20 minutes at a time.



5V USB OUTPUT CHARGING

- 1.Plug the device USB cable into the USB Output Port (A) on the battery Pack (Fig.2)
- 2.Press the button (B) for charging (Fig.3)



WARNING: Do not allow familiarity with this product to make you careless. Remember that a careless fraction of a second is sufficient to inflict serious injury.



WARNING: Do not use any attachments or accessories not recommended by the manufacturer of this tool. The use of attachments or accessories not recommended can result in serious personal injury.



WARNING: Do not leave items to be inflated unattended while inflator is in use. These items can burst and could cause serious injury.



NOTICE: The inflator is not designed for continuous use. For every five minutes of inflator use, five minutes of cool down time are required.



WARNING: Since the pressure gauge is not calibrated, and is therefore not binding for exact values, tire pressure must be checked using a reliable measuring device before driving a vehicle with vehicle tires inflated with the inflator. Driving a vehicle with improperly inflated tires could result in serious injury.



NOTICE: The inflator is capable of inflating to 6.8 Bar. To avoid over inflation, carefully follow instructions on items to be inflated. To avoid product damage, never exceed recommended pressures.



APPLICATIONS

You may use this inflator for the purpose listed below: Inflating items such as motorcycle, car, and bicycle tires.

NOTE: The inflator is not designed for commercial applications.



WARNING: Battery tools are always in operating condition. Always remove battery pack from your tool when you are assembling parts, making adjustments, cleaning, or when not in use. Removing battery pack will prevent accidental starting that could cause serious personal injury.

TO INSTALL/REMOVE BATTERY PACK

To install:

1. Place the battery pack in the tool. Align the rib on the battery pack with groove in the battery port.
2. Make sure the latches on the battery pack snap in place and that the battery pack is secured in the tool before beginning operation.

To remove:

Depress the latches in the front of the battery pack to release the battery pack and remove it from the tool. (Fig.4)



OPERATION

Connecting and removing the battery 12 V car plug-in power base

1. Unravel cord before use . If battery is installed, remove from the machine by pressing battery release button and pulling out
2. Slide the 12V DC Car Adapter pack into the machine until you hear a click.
3. Connect the adapter into the DC socket in your car When ready to use, power car on. Always operate vehicle outdoors.

NOTE: Be sure the cord runs through the hole at the base of the pack.

AIR HOSE AND ACCESSORY STORAGE

When the inflator is not in use, press the hose into the storage area on top of the tool.

When not in use, adaptors and needles provided with the inflator can be placed in the storage area of the tool.

LED WORKING LIGHT

When working, the LED light on the base of the tool is on, which is good for nightwork.

START SWITCH AND SELF-LOCKING SWITCH(See Figure.5)

1. When press start switch, push self-locking switch up, which will make the switch in LOCK-ON.This guarantees the safety for the user and of the tool.
2. After the pressure enough, pressing the start switch, then the self-locking switch will sprang back down.



USING THE INFLATOR

1. Install the battery pack.
2. Position air chuck clamp in the unlock position perpendicular to the air hose.
3. Place the air chuck on the valve stem.
4. Push the air chuck down so that the threaded section of the valve stem is inside the air chuck. Clamp the end of the air chuck down onto the valve stem by pressing air chuck clamp down until it stops or is parallel with the air hose.

WARNING: Improperly attached hoses or accessories can become detached under pressure and causeserious injury. Possible air leaks can cause faulty pressure readings. Make sure all connections are tightly secured.



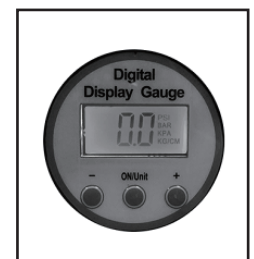
5. If self-locking switch is up, turn it down .
6. Press "ON/Unit" button to read the current tire pressure on the gauge. Press "ON/Unit" button again to select tire pressure measurement unit from PSI, KPA, BAR, KG/CM.
7. Press "+" or "-" button to adjust preset tire pressure.
 - (1) Long press "+" or "-" button to adjust working pressure quickly.
 - (2) Press "+" or "-" button each time can adjust preset working pressure by 0.05BAR &KG/CM, 0.5 PSI, 5KPA.
8. Preset pressure value will be set after flashing for 3 seconds. Press switch to start inflating. When it reaches the preset pressure value, the device will stop working.

NOTE: To reset the tire pressure measurement unit, press "ON/Unit" to reselect after setting preset pressure value.

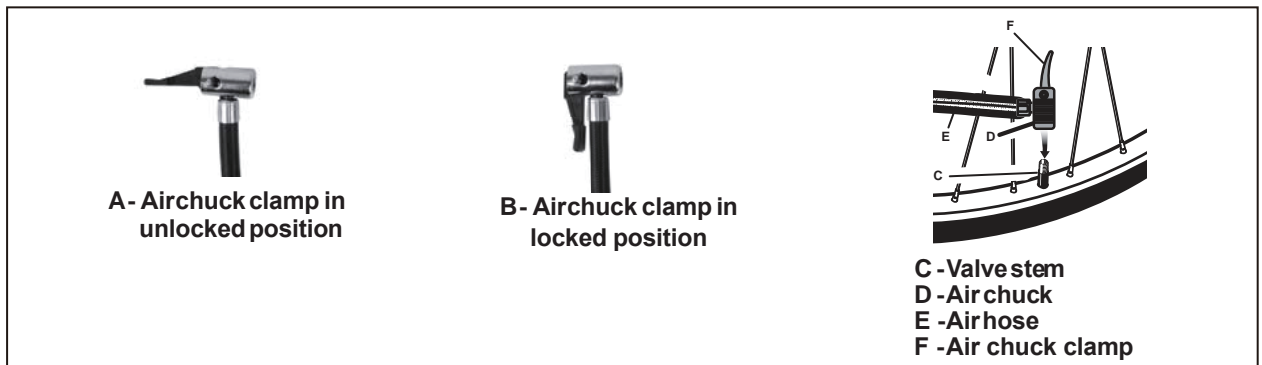
NOTE: Digital gauge records the preset measurement unit and value of last time operation

NOTE: After the air pump reaches the preset pressure value, the digital gauge will go off after 30 seconds, and the device will shut down automatically.

NOTE: Maximum PSI for this unit is 100PSI.



OPERATION



NOTICE: Always leave the hose free of obstructions when the tool is not in use. Overheating could occur if the hose is blocked.

ACCESSORIES

The supplied accessories perform a variety of functions. The tapered adaptor can be used on smaller pinch valves to inflate small items like children's toys, which usually require the user to inflate them by blowing air into them. The sport ball needle can be used to inflate any type of sports ball or any other item that requires an inflation sport ball needle.



NOTE: When inflating items of 10 PSI or less, inflate in short bursts and check after each burst by feel or with a calibrated measuring device to determine accurate pressure.

SPORT BALL NEEDLE:

1. Insert sport ball needle into sports ball valve and inflate.
2. Remove sport ball needle after inflation.

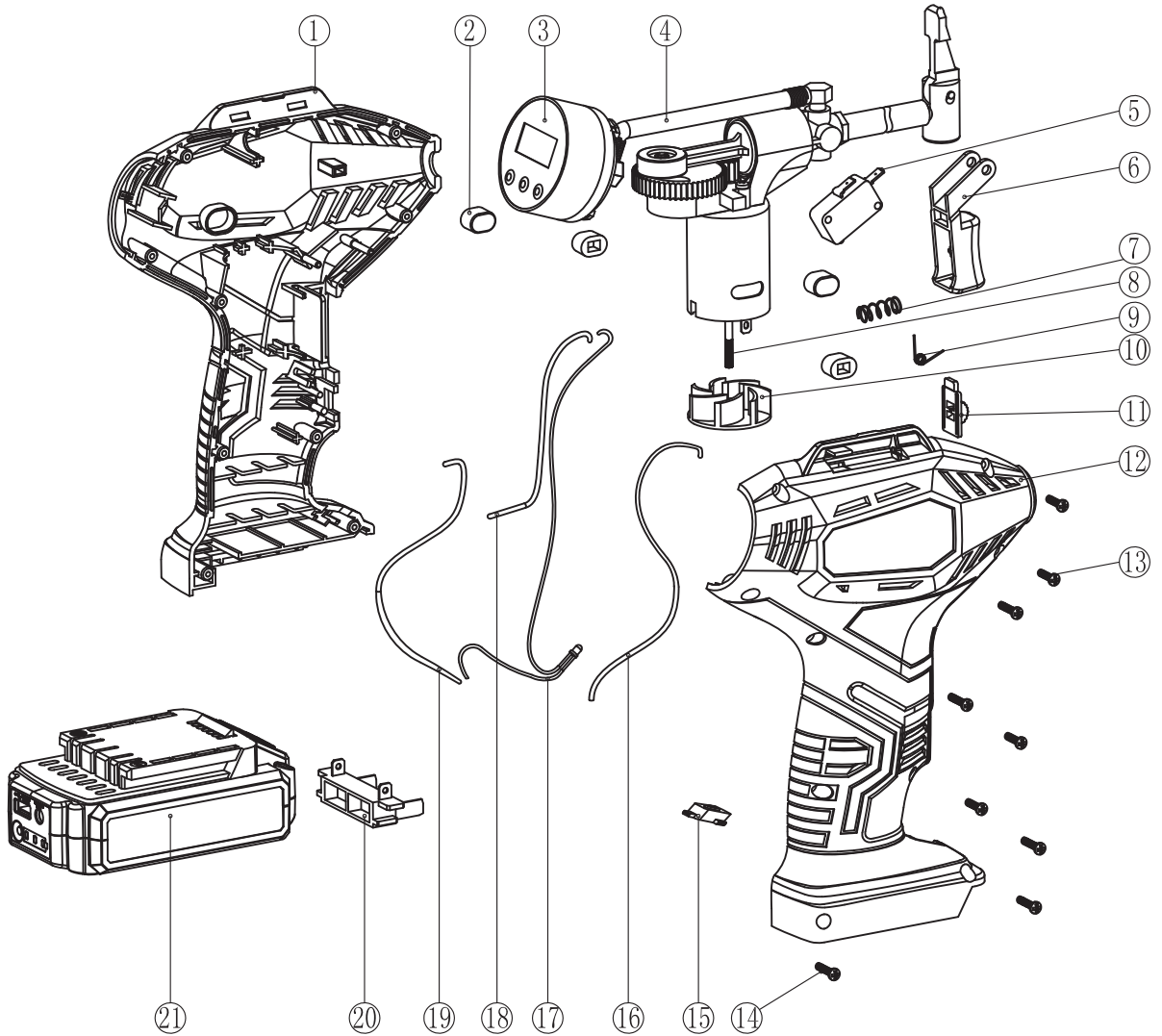
NOTE: Pressure required for most sports balls is too low for accurate reading on tool gauge.

MAINTENANCE

1. Do not at any time let brake fluids, gasoline, petroleum-based products, penetrating oils, etc., come in contact with plastic parts. Chemicals can damage, weaken or destroy plastic which can result in serious personal injury.
2. Keep the tool clean using a soft damp (not wet) cloth. Do not use solvents on the plastic parts.
3. Avoid using solvents when cleaning plastic parts. Most plastics are susceptible to damage from various types of commercial solvents and may be damaged by their use. Use clean cloths to remove dirt, dust, oil, grease, etc.
4. To maintain the best performance of your rechargeable battery, protect it from overheating, both from overcharging and during storage. Occasionally charge the battery for 7 hours.

PARTS LIST AND SCHEMATIC DRAWING

NO	DESCRIPTION	NO	DESCRIPTION
1	Left housing	12	Right housing
2	Absorber	13	Screw
3	Digital gauge	14	Screw
4	Air pump assembly	15	LED cover
5	Microswitch	16	Red wire 1
6	Trigger	17	LED light
7	Spring	18	Red wire 2
8	Motor	19	Black wire
9	Torsional spring	20	Batter clip assembly
10	Fan	21	Battery Pack
11	Self-locked switch		



MASTER
WORKS™