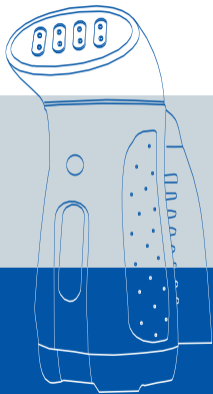




Your Garment's
Exclusive Fashion Stylist



USER MANUAL

Please read all instructions
carefully before using
this product.

Travel

HANDHELD GARMENT STEAMER
Model: TS-01



www.salavusa.com

Visit our website to find product tips, customer support and learn about
SALAV patented steam technology.

www.salavusa.com



Dear Valued Customers:

Thank you for purchasing this SALAV product. Please read this manual prior to using your SALAV appliance. For more product information, FAQ and customer support please visit our website at www.salavusa.com .

Important Safety Instructions:

1. This appliance has a self-adjusting dual-voltage (100V-240V). A switch is not needed to convert the voltage. Simply attach a plug converter and the appliance will work once plugged in.
2. Do not share the power supply with other high-powered electric appliances.
3. To reduce the risk of electric shock, do not immerse the appliance, plug, or power cord in water or other liquids.
4. Do not leave this appliance unattended while it is in operation. For indoor use only.
5. Fill water to "MAX" level before using and observe the water level during use.
6. Do not operate the appliance if power cord is damaged.
7. Never insert any object into any steam opening.
8. Do not place the nozzle directly on any surface or the appliance power cord while it is hot or plugged in.

9. Be cautious about steam spraying out from the nozzle. Do not direct steam at people or animals, or use steamer on garments while they are being worn.
10. Steam only in a vertical motion. Never use steamer in a horizontal position or tilt backwards - doing so may result in hot water discharge.
11. Turn off, unplug and allow the appliance to cool completely for at least 30 minutes prior to draining the water tank and storing.
12. Always turn off and unplug unit before refilling, draining, cleaning, moving, or when not in use.
13. Keep the appliance away from flammable materials and chemicals.
14. Do not fill the water tank with hot water or corrosive cleaning agents which could cause damage. Distilled or filtered water is strongly recommended.
15. When in use, this appliance will spray hot steam from its steam nozzle. To avoid injury from hot steam, do not aim the steam nozzle at people or pets.
16. This appliance is not intended for use by children or near children and other persons whose physical, sensory or mental capabilities or lack of experience and knowledge prevents them from using the appliance safely without supervision or instruction by a responsible person to ensure that they can use the appliance safely.

Structure

1. Steam nozzle upper cover
2. Steam nozzle lower cover
3. Front shell
4. Indicator-light cover
5. Front shell's water gauge
6. Bottom shell
7. Side hand grip
8. Back shell
9. Back shell's water gauge
10. Hardware handle (measuring cup)

Empty Weight: 570g

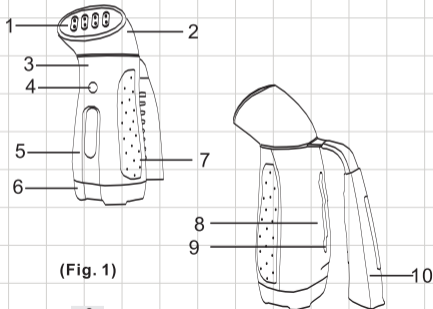
Capacity : 60ml

Power Consumption: 250W-265W

Voltage/Current: 100V-240V~ 50Hz/60Hz

Steam Ready: ≤ 150 secs

Continuous Usage: 10mins



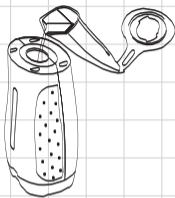
(Fig. 1)

Adding Water to the Steamer:

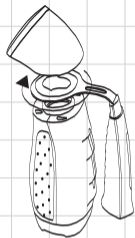
1. Please make sure the appliance is not plugged in. Please pull out the plug before adding water and cleaning the steamer.
2. Rotate the travel steam nozzle 90 degrees counterclockwise, take the steam nozzle out, and then rotate the hardware handle clockwise until the handle can be taken out. (See Fig. 2)
3. Take the reversed handle as a cup, fill it with water. Carefully add tap water into the tank until the water level reaches the mark "Maximum" on the water gauge. When looking at the water inlet, user can clearly see whether the water has reached the maximum level. (See Fig. 3)
4. Conversely, place the hardware handle in the clamp position and turn it counterclockwise, and then insert the bottom of the steam nozzle into the water inlet of the steamer. Rotate it 90 degrees clockwise to lock the steam nozzle. (See Fig. 4)



(Fig. 2)



(Fig. 3)



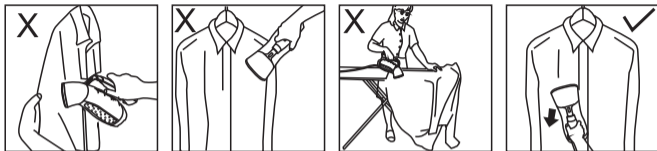
(Fig. 4)

Caution:

Using tap water in your garment steamer may cause build up in the water tank. We recommend distilled water in order to prevent build up and prolong the life of your steamer.

Ironing Guide

1. Add water into the tank before using the appliance.
2. First, rotate the steamer's handle, and then rotate the steam nozzle until locked.
3. When using the steamer for the first time, it is recommended that you let it operate for about 5 minutes in advance and then pull out the plug. When the steamer is gradually cooled down, clean the container, and then re-add water to steam clothes.
4. Place the steamer up-right on a flat surface, plug it in, and the indicator light will light up.
5. Within 150 seconds, the steamer will be ready for use.
6. For best results, hold clothes taut and steam lightly in a vertical motion. Do not move the steamer too quickly and do not lean or tilt the steamer-doing so may result in spillage of hot water. (See Fig 5).
7. To prolong its lifespan, do not use your steamer without water. When there is a little steam, please pull out the plug and re-add water to the maximum water level.



(Fig. 5)

Caution:

1. When using the steamer make sure the water level does not exceed the maximum water level. Excess water may result in water leakage and water spraying.
2. Before disassembling the appliance, be sure steamer is completely cooled down (approximately 30 mins).

Cleaning and Maintenance:

- 1.The appliance needs no cost to maintain and no detergent to clean. If the power cord is damaged or it does not work normally, please return it to the service station for maintenance. Do not try to disassemble or repair by yourself.
- 2.Please pull out the plug and wait until the appliance is totally cooled down before cleaning it.
- 3.Remove the steam nozzle and handle according to the above methods, and pour out the water therein.
- 4.Do not place the appliance in water. Use dry cloth to dry the steamer. No special detergent is needed for cleaning.
- 5.Make sure the appliance is dry before storing or packaging.
- 6.This appliance is not intended for use by persons (including children) with reduced physical, sensory or mental capabilities, or lack of experience and knowledge, unless they have been given supervision or instruction concerning use of the appliance by a person responsible for their safety.

Troubleshooting

FAQ	Reasons	Solutions
The appliance does not spray out steam. The indicator light does not work.	The appliance is not plugged in.	Connect the plug to the power supply.
	The household power fuse is off or fused.	Check the power supply or ask qualified electricians for help.
The steamer does not spray out steam. But the indicator light works.	The water in the tank has been used up.	Add water.
	Temperature controller works for protection.	Add water to cool temperature controller down before it works again.
The steam nozzle panel has droplets.	Condensate water is produced when working.	Disconnect the power supply and turn on the travel steamer according to the operation instructions to remove the internal condensate water.
Spray water when operating.	The water exceeds the tank's maximum water level.	Pay attention to the amount when adding water.
	Wrong ironing operations.	Use it according to the operation instructions.