



**CONNECTS COMPUTER TO ANY
BLUETOOTH DEVICE**

User Manual

Index

Product overview	3
Plug and Play	3
How to disable built-in Bluetooth?	3
CSR Driver Installation Procedure	4
Pairing the device to computer	8
Customer Support	12



Bluetooth 4.0 USB Adapter

1. Product overview

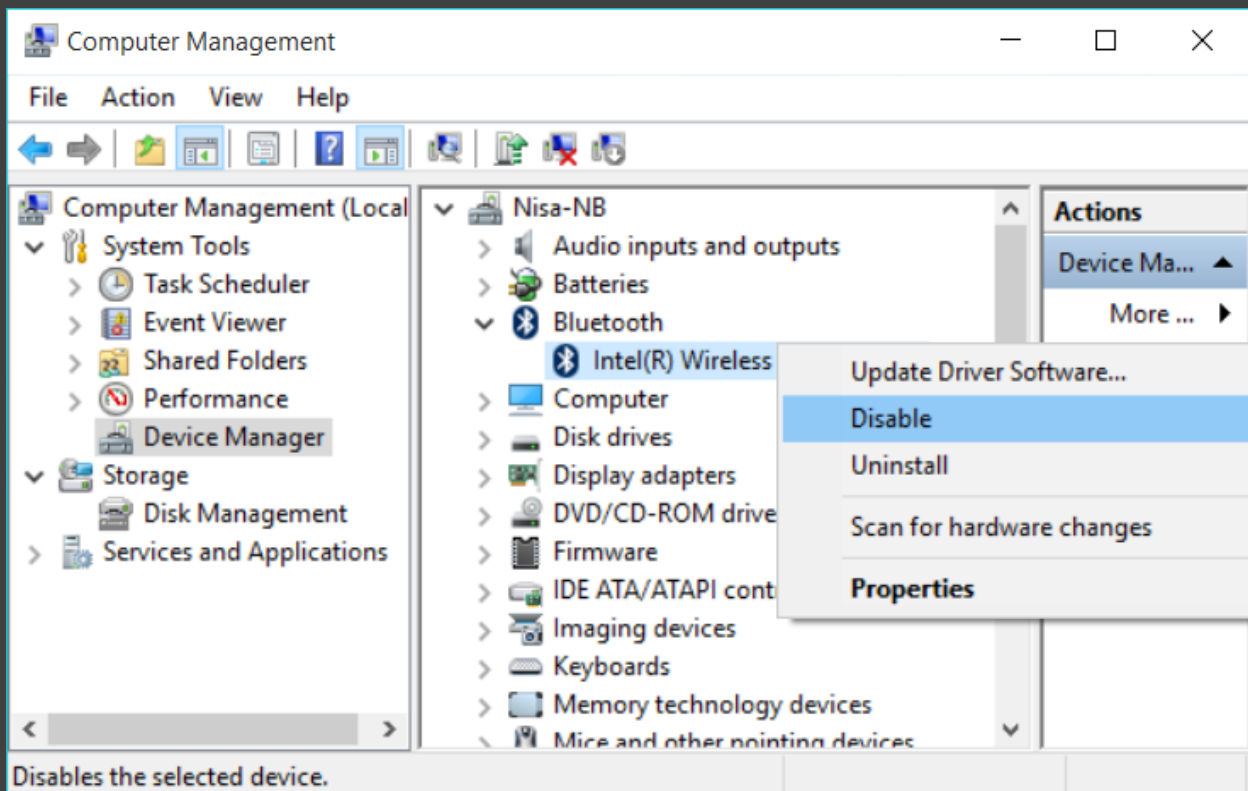
Connect your computer to any Bluetooth device, supports data exchange and audio transfer. Compatible with Windows XP, 7, 8/8.1, 10 and Vista.

2. Plug and Play

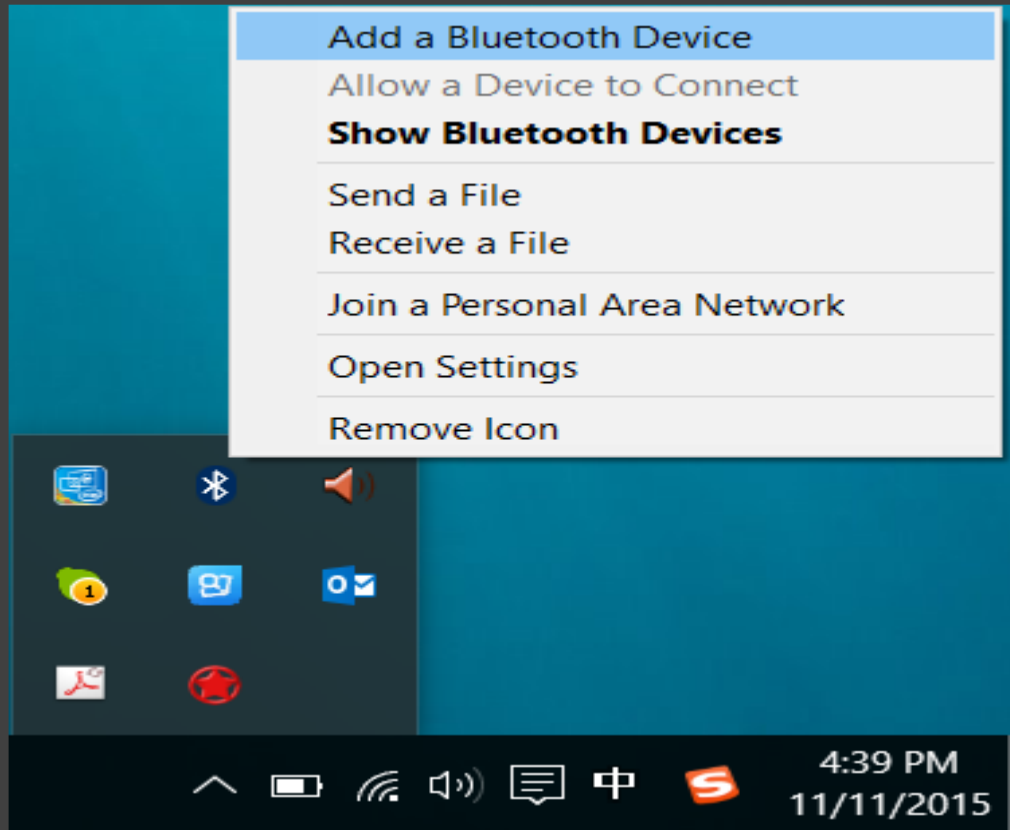
Oxi supports plug and play on most of windows 10/8.1/8/7 (some of windows 7 system, just support mono A2DP). Before use, please ensure your PC/Laptop whether has built-in Bluetooth or not? If it has, please disable built-in Bluetooth first.

3. How to disable built-in Bluetooth?

Open “Device Manager” -> Find Bluetooth icon and open drop-down list -> Right-click on Bluetooth device and disable it. As in below image



Plug Oxi into your PC/Laptop, after 10sec ~ 1min the Bluetooth icon will appear on the right corner of the screen. As in below image.



Now Oxi is ready for use.

4. CSR Harmony Installation Procedure

For Windows user as well as those who do not like Windows' own Bluetooth driver, you can install **CSR Harmony** driver for Oxi.

System Requirement

1. Windows XP, 7, 8/8.1, 10 and Vista
2. At least 500MB of free disk space.

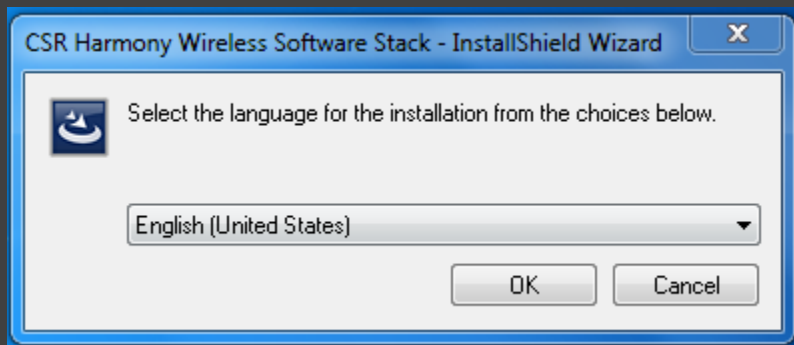
How to install the CSR Driver

Step 1. Ensure the Bluetooth hardware is plugged in/enabled.

Step 2. Copy the setup.exe file to a folder.

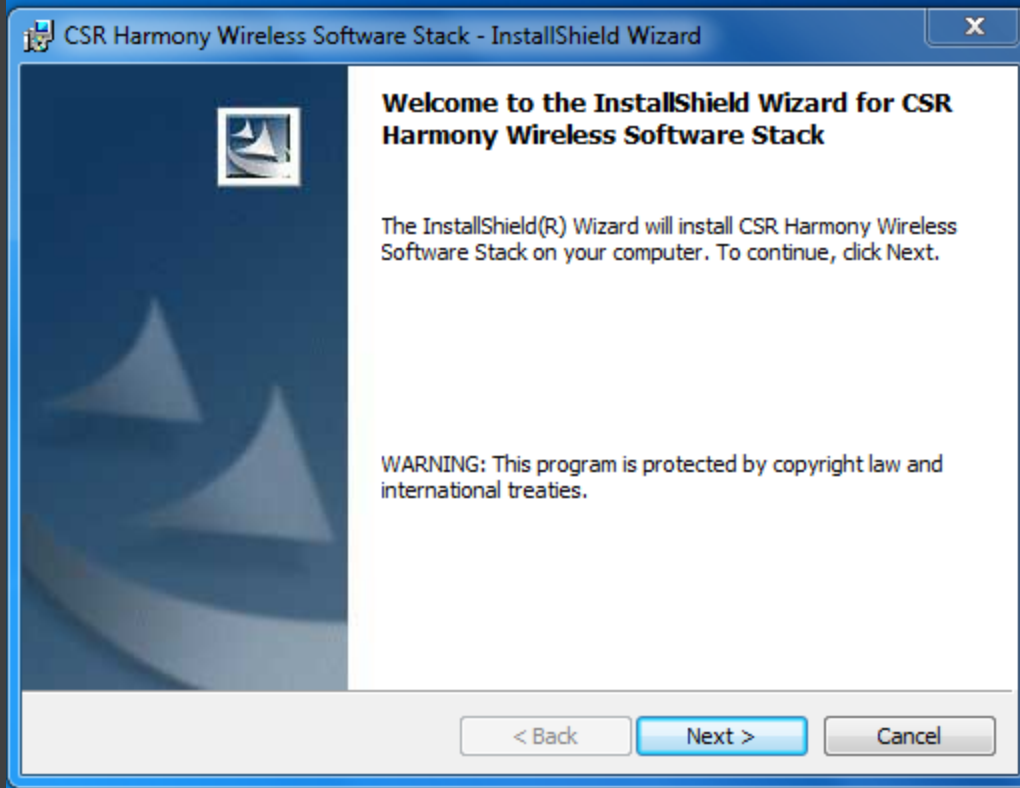
Step 3. Double-click on setup.exe.

Step 4. Choose the setup language to install. If an older version of CSR Harmony is installed on the machine, the **Setup** wizard provides a warning. Go to step 5. If no older version of CSR Harmony exists, go to step 7.



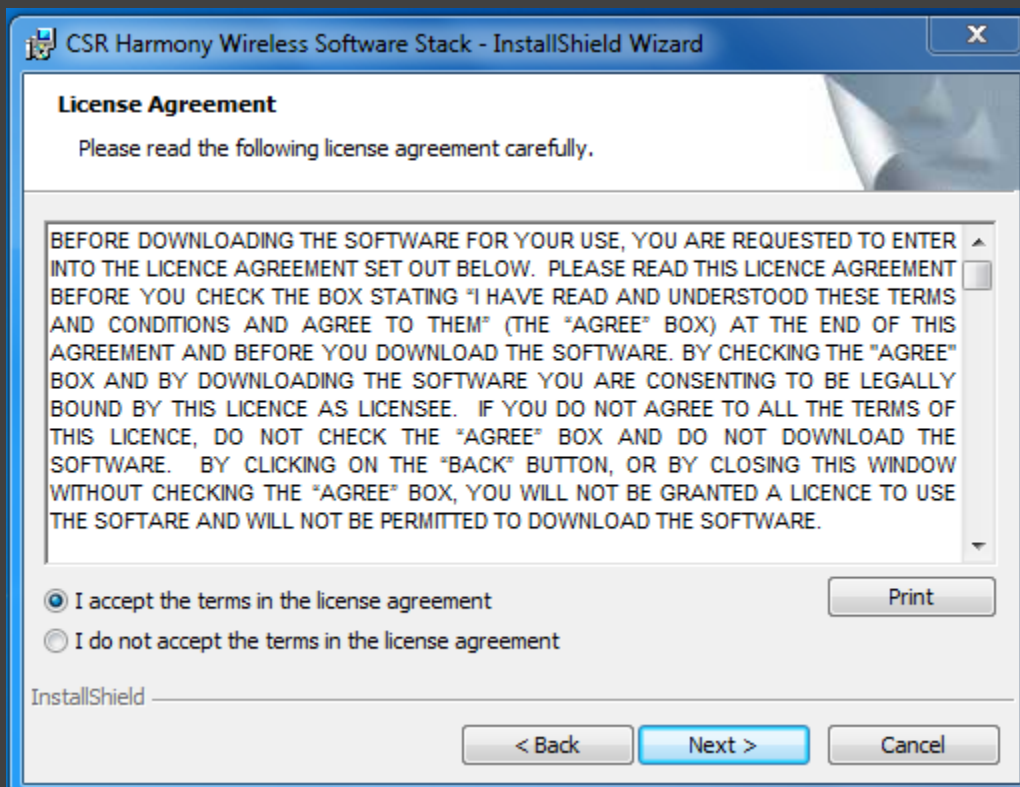
Step 5. Read the warning and select **OK** to uninstall the earlier version.

The **Setup** wizard returns to the Installation page.
The **Welcome** wizard appears.



Step 6. Click **Next**.

A **License Agreement** window appears.



Step 7. Select **I accept the terms in the License Agreement** and click **Next**.

The **Destination folder** window appears.

Step 8. Either:

Click **Next** to install in the default installation directory:

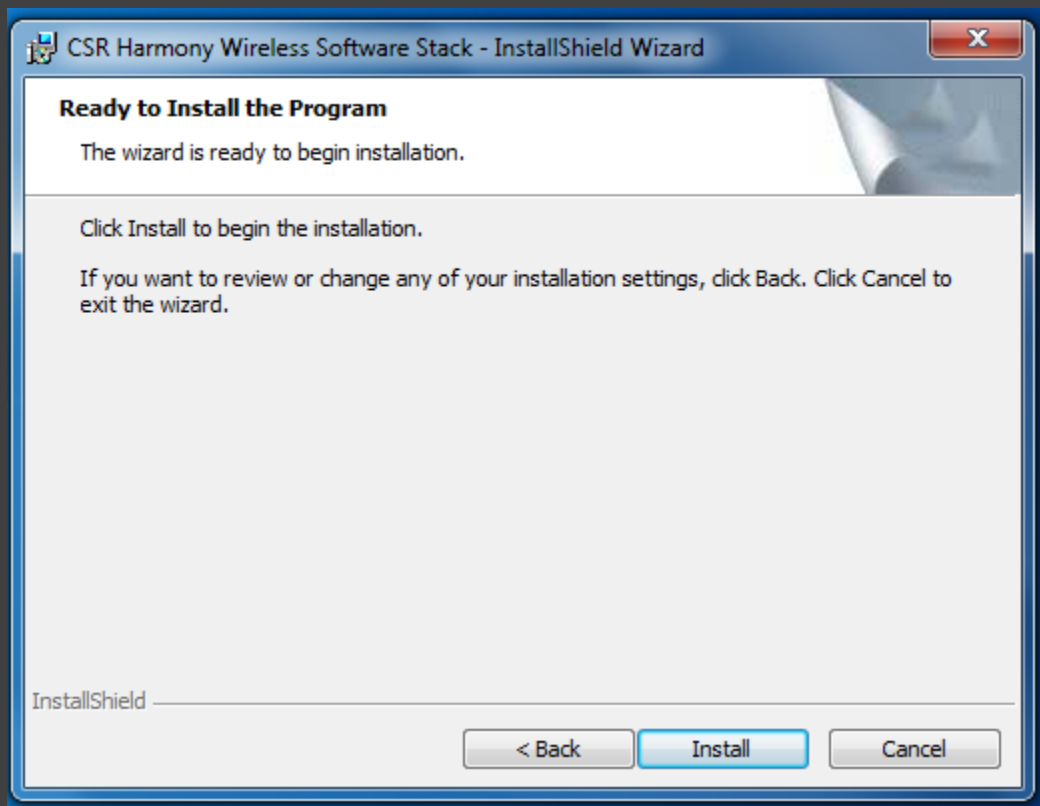
C:\Program Files\CSR\CSR Harmony Wireless Software Stack

To install CSR Harmony in a different path, click **Change...**, choose the path for installation and click **Next**.

The **Check Bluetooth Dongle** window appears.

Step 9. Ensure the Bluetooth dongle is plugged in (otherwise, CSR Harmony drivers may not load properly).

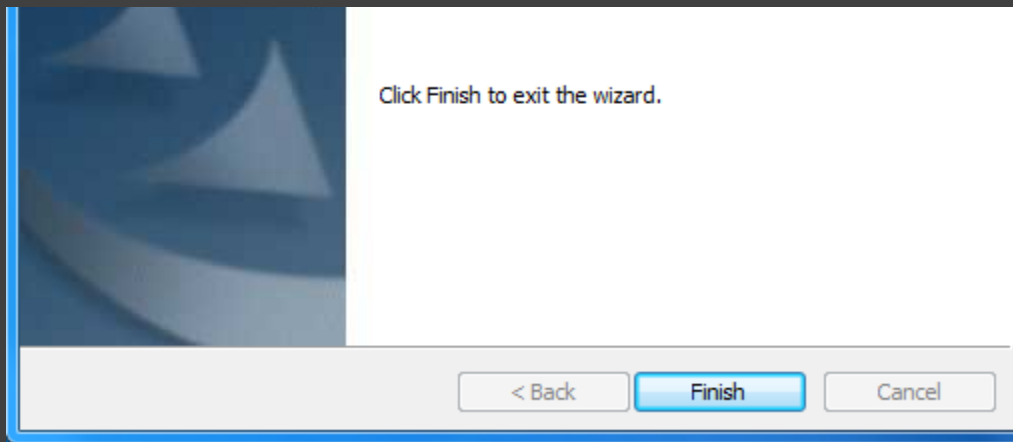
The **Ready to Install** window appears.



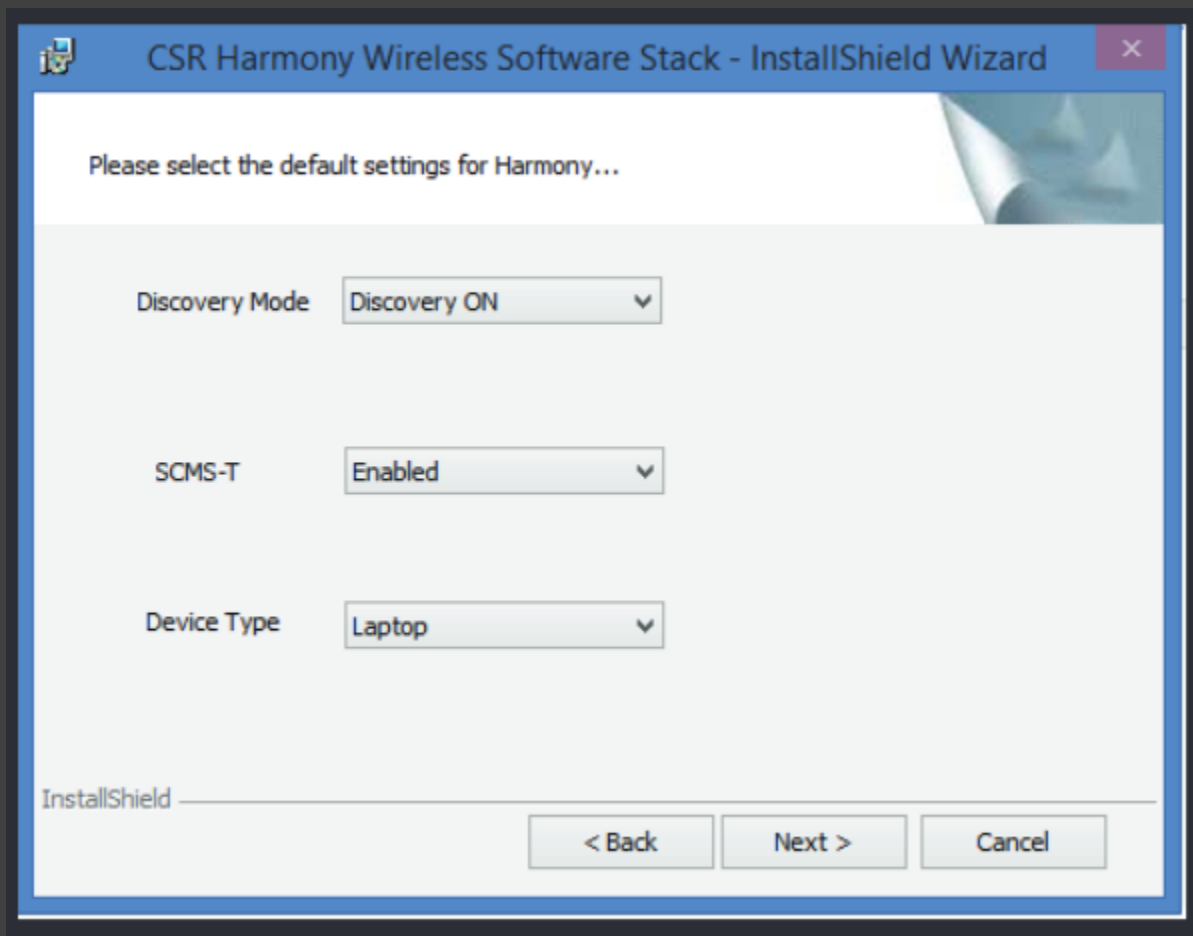
Step 10. Click **Install**.

The **Setup Complete Success** window appears.

Step 11. Click **Finish**.



Step 12. At the "Please select default setting" screen, choose "Discovery On", "Enabled", and the corresponding device type "Laptop or Desktop"



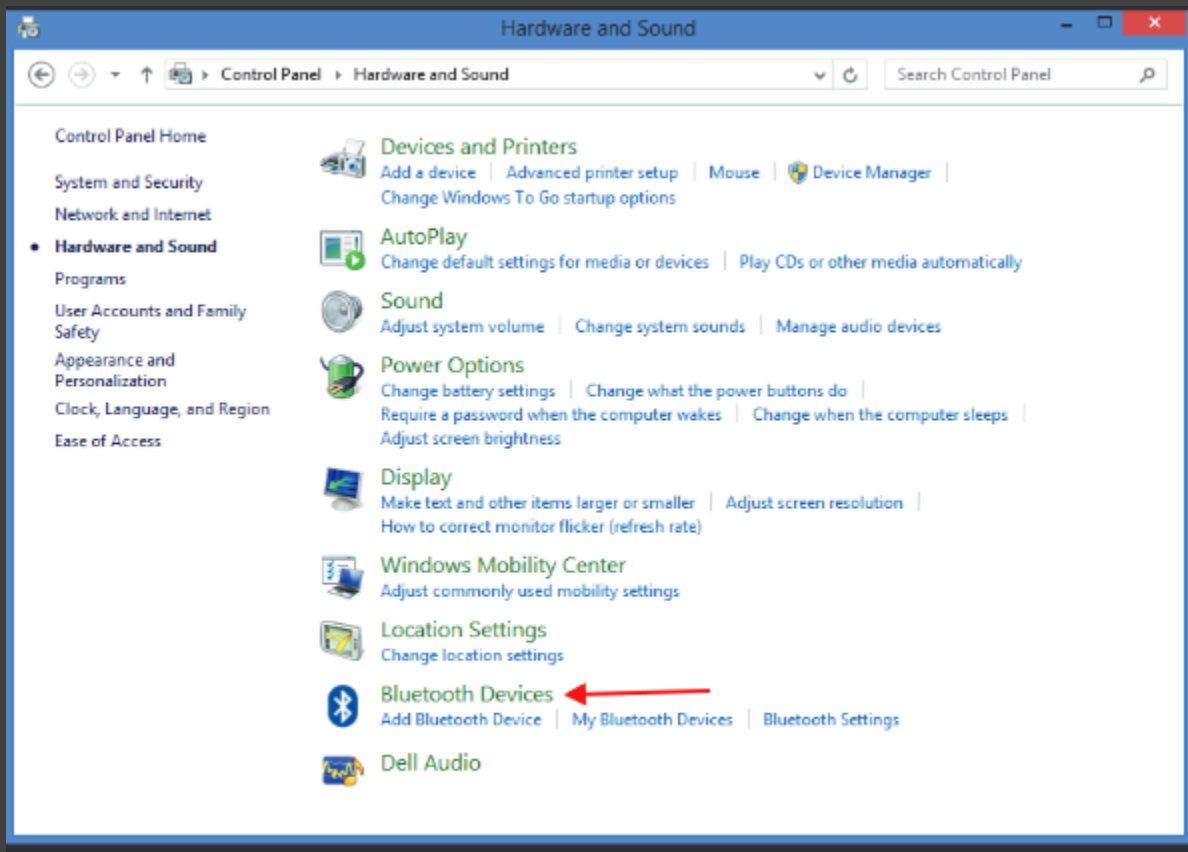
5. Pairing the device to computer

Step 1. After successful installation of the driver, restart the computer

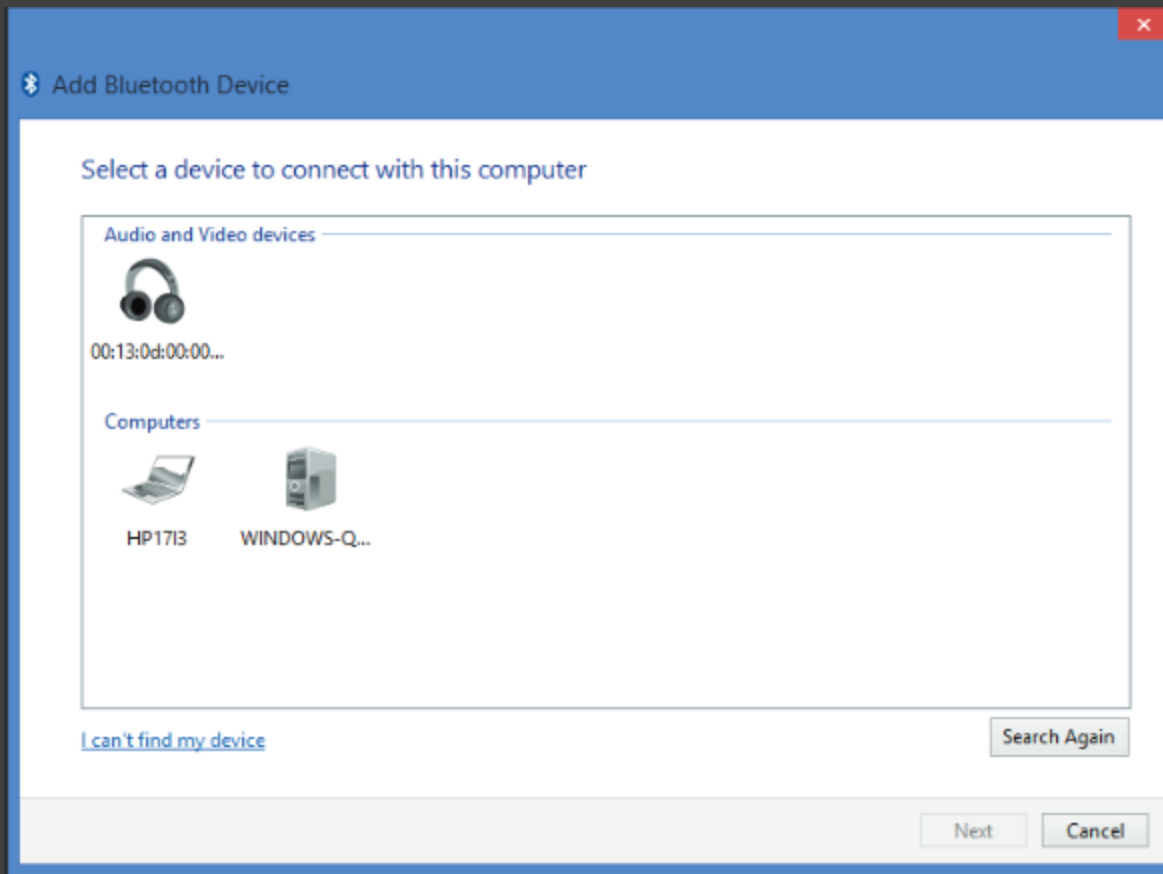
with OXI installed.

Step 2. Go to "Bluetooth Devices" in control panel and choose

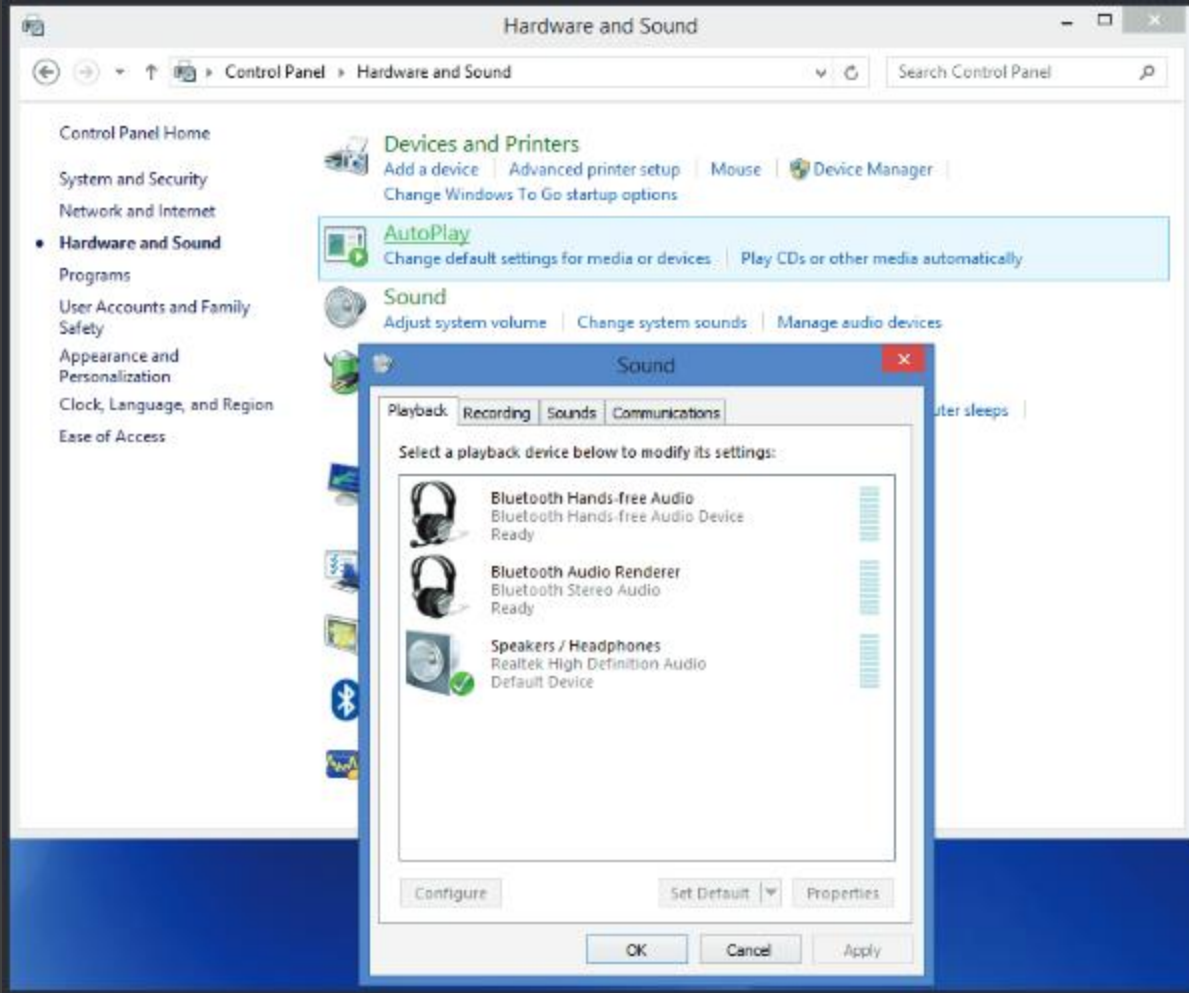
"Add Bluetooth Device".



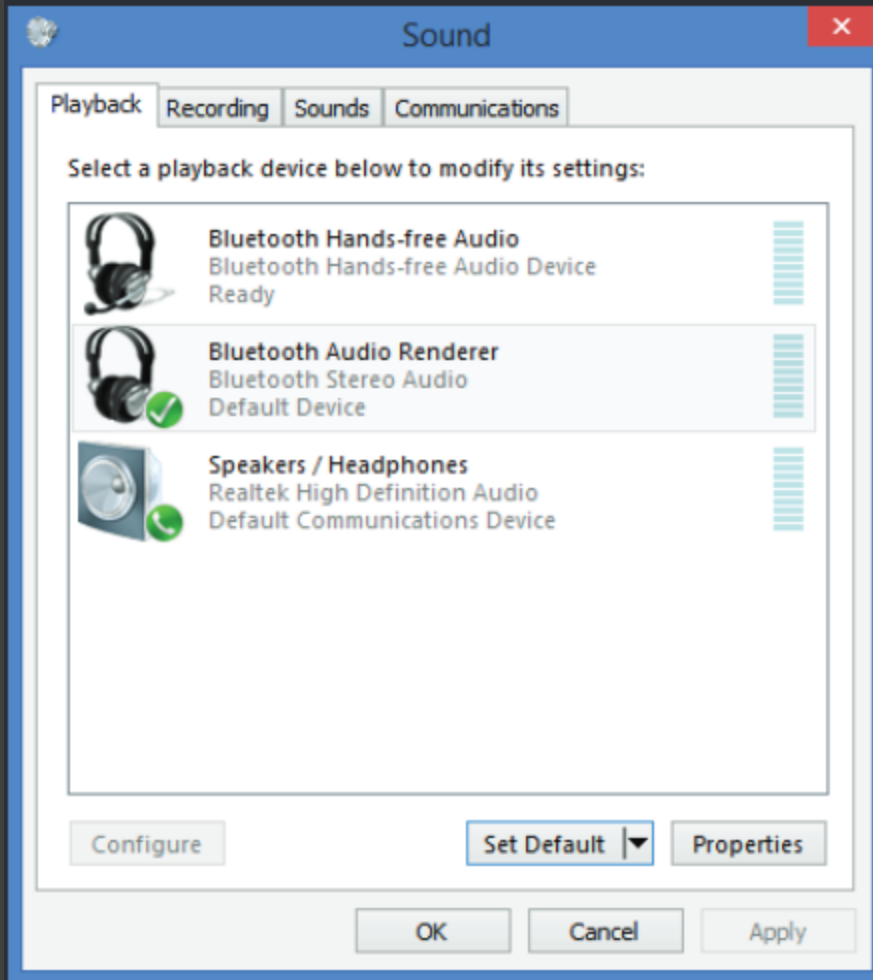
Step 3. . Search and find the bluetooth device you wish to pair.



Step 4. For headsets or audio devices, the audio source can be adjusted by selecting "Manage Audio Devices" from "Sound" in the "Control Panel".



Step 5. Choose the device intended for audio by "Set Default"



6. Customer Support

We're Here to Help!

We take your 100% guarantee very seriously and trust you are completely satisfied with your purchase. If for any reason you need assistance in setting up your device

Please contact us via email:

Support@observeye.com

Or Call

1-845-393-1757

Support hours: Monday through Friday from **9:00 a.m.** Eastern Standard Time to **6:00 p.m.** Eastern Standard Time.

Refer to this manual if you have any questions about the operation of the Device. If you have other questions, you can always contact our customer Support.
