

HATHASPACE

Smart True HEPA
Air Purifier

User Guide

Model HSP001

CONTENTS

Specifications	1
Features	1
Product Diagram	3
Smart Air Quality Sensor	4
Filter Installation	5
Filter Maintenance	6
Operations	7
Precautions	9
Troubleshooting	13

SPECIFICATIONS

Product Name	Smart True HEPA Air Purifier
Rated Voltage	AC 110V~120V or 220V~240V Please refer to the nameplate on the back of machine.
Rated Frequency	50 / 60HZ
Rated Power	40W
Room Coverage	Replaces the air 2x per hour in 350 Sq Ft Replaces the air 1x per hour in 700 Sq Ft
CADR	160 m ³ /hr

FEATURES

■ Nano Cold Catalyst Filter

Removes larger particles like dust and pet dander, as well as toxic household chemicals like formaldehyde, ammonia, benzene, and other harmful gases.

■ Activated Carbon Filter

Activated carbon molecules absorb and remove smoke, odors, gases, and volatile organic compounds (VOC's) found in household products.

■ Antibacterial Filter

Nano-materials in the antibacterial filter eliminate and destroy bacteria, viruses, and molds in the air.

■ True HEPA Filter

Efficiently removes 99.97% of airborne pollutants in the air as small as 0.3 microns like dust mites, allergens, pollen, mold spores, bacteria, and viruses.

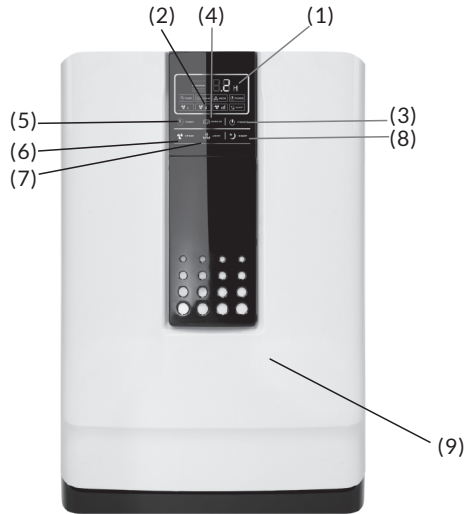
■ Ionizer/Anion Filter

Releases negative ions (anions) that attach to positively charged air pollutant particles, neutralizing them and making them easier for the air purifier to capture.

■ UV-C Light Sterilizer

245nm UV-C light sterilizes and kills a variety of bacteria by targeting their DNA. It also eliminates odors and produces negative ions, making your air fresher and preventing the spread of viruses.

PRODUCT DIAGRAM



(1)	Display	(7)	Ionizer
(2)	Control Panel	(8)	Sleep Mode
(3)	Power	(9)	Front plate
(4)	UV Sterilizer	(10)	Air Inflow
(5)	Timer	(11)	Handle
(6)	Fan Speed	(12)	Air Outflow

AIR QUALITY SENSOR



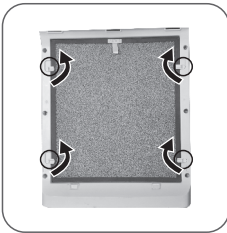
The air quality sensor detects your air environment in real-time, feeding information to the air purifier about the quality of your air. To maintain optimal function, use a compressed air can once a year to blow off particles that have accumulated on or near the sensor. Sensor is located on the bottom left when you remove the front cover.

Color	 Air Quality	 Fan Speed
Green	Good	Low
Yellow	Moderate	Medium
Red	Bad	High

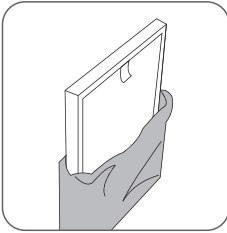
FILTER INSTALLATION



Pull the front plate toward you from its base and its magnets will release the bottom of the front cover. Then lift upward on the front plate to remove it completely, exposing the filter.



Turn buckles and remove filter gently by pulling outward.

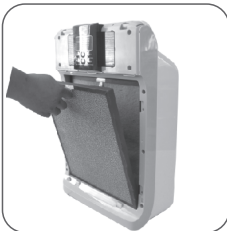


Remove packaging film from filters before use.



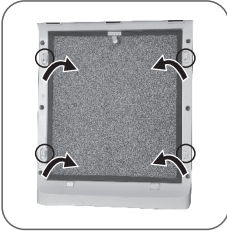
Place Filter 2 (Antibacterial and HEPA Filter) back into the unit.

Note: Please ensure the tab side is facing you.

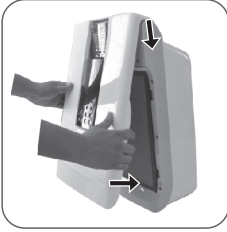


Place filter 1 (Nano-Cold Catalyst Filter) back into the unit.

Note: Please ensure the tab side is facing you.



Make sure filters are installed correctly, with tabs facing you. Lock filters in place by turning the buckles to secure them.



Reinstall the front plate by first placing the top of the front plate into the notches on the top of the purifier. Next, let the bottom magnets connect. Make sure the front plate is secure before powering on.

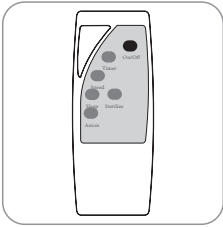
FILTER MAINTENANCE

It is recommended to change the filters every 6 months. You may need to do so sooner depending on your air conditions. It is important to be aware of the following signs of expired filters:

- Increased operating noise
- Decreased air flow
- Filters smell of odors when removed
- Filters are visibly covered in debris



To extend the filter life, expose the filters to sunlight periodically for 15-30 minutes in order to release any gases, bacteria, or odors accumulated on the filters.



The Hathaspace purifier includes a remote, which is powered by 2 AAA batteries (not included).



Plug in the purifier. The red power indicator on the display will light up. Use the Power button on the unit or remote to turn on/off. The purifier will start in auto mode and the smart sensor will automatically initiate when the unit is turned on. Give the sensor a few minutes to process the air quality. The unit will adjust the fan speed automatically according to the air quality, always beginning in high and moving down as needed.



Press the Timer button on the unit or remote to cycle through preset time intervals. You can choose up to 12 hours, or not use the timer and let the purifier run continuously. The time interval is displayed on the unit display. The unit will power off after the time interval ends.



Press the Speed button on the unit or remote to adjust the fan speed. A faster fan speed increases airflow through the unit, thus purifying your air faster. Choose from Low (Green), Medium (Orange), High (Red), and OFF. Fan speed is indicated on the unit display.



Press the Sleep button on the unit or remote to put the purifier in sleep mode. In sleep mode, the unit will run at a low speed, and the intelligent sensor turns off. This keeps the purifier whisper-quiet. When sleep mode is on, the unit will only run at low fan speed and the display lights will turn off.



Press the Anion button on the unit or remote to turn on the ionizer. The Anion light will turn green on the display when the ionizer is on.



Press the Sterilize button on the unit or remote to turn on the UV Germicidal Lamp. The Sterilize light will turn blue on the display when the UV Germicidal Lamp is on.

Before use, read entire manual thoroughly and keep it for future reference.



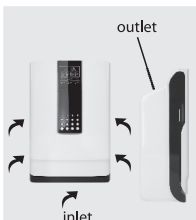
Hazardous

To avoid electric shock or fire, ensure that the product is dry at all times and keep the product away from water or any other liquid.



Warning

1. Make sure the local power supply voltage is the same as indicated on the nameplate on the back of machine.
2. If the power cord is damaged, do not plug in or turn on the purifier. Email Hathaspace at team@hathaspace.com.



3. Do not block the air inlet or outlet with any objects.



4. For safety, do not allow children to handle the purifier unsupervised.

5. Keep the filters away from high temperatures or sparks/flames.



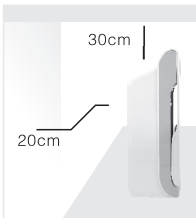
Notice

1. Do not use the purifier as a chemical ventilator, dust cleaner, or cooker ventilation hood.



2. Ensure your power outlet is functioning properly.

3. This product must be placed on a dry, stable and flat surface



4. Keep 8 inches of space on either side of the purifier while in operation, to allow proper airflow through the unit. Leave 12 inches of space above the top of the air purifier. Containing the purifier in a small space will restrict airflow and efficiency of the unit.



5. Do not place any objects on top of or on the side of the unit.

6. Do not place the purifier under an air conditioning unit, or any place where water may drip onto it.
7. Do not drop or hit the product, handle it gently.
8. Do not operate this product while using flammable gas sprays such as insect repellent, and common household cleaning chemicals.



9. Do not use this product near gas appliances, heating devices, or near a stove.

10. Unplug the power cord when cleaning or changing filters.
11. Do not operate the purifier in a space where temperature changes are drastic. This will cause condensation to form in the unit and ruin electrical components.
12. This product is intended for household use under normal operating conditions.



13. Do not use this product in a space with high humidity, such as a bathroom with the shower on, sauna, or steam room.

Smart Air Quality Sensor System memory reset instructions:

If the air quality indicator displays red color and the machine power is cut off suddenly, you may have to reset the intelligent memory. Otherwise, the red color display will remain.

1. Unplug the machine and wait for 15-20 seconds. Plug again and start the machine.
2. Keep the machine running for 1 minute. The air quality indicator should begin functioning normally again.
3. Please perform the steps above in a clean environment without air pollution. Otherwise, the air quality display lights will be disrupted.

Problem	Solution
No air comes out from the outlet.	Check if purifier is on using the red power indicator on the display.
Decreased Airflow	The filters are dirty and they need to be cleaned or replaced.
	The filter packaging bag is not removed. Please remove the filter packaging bag.
Air quality has not improved after running the purifier.	Make sure the filters are installed in the proper order and positioned correctly in the unit.
	Filters are worn out, please replace all the filters.
When to replace the filters.	When the surface of the first filter is dirty and fades in color, it has collected many particles, and will perform better if replaced with a clean filter. Typical operating conditions require changing the filter every 6 months .
	Change the filter when the HEPA filter becomes discolored, or every 6 months .
	The filter replacement period is dependent on the air it filters, time used, and amount of particles collected. For optimal air purification, it is best to replace the filters every 6 months .

For all other questions, email team@hathaspace.com


HATHASPACE

In harmony.

www.hathaspace.com

team@hathaspace.com

1-800-446-0535

 @Hathaspace