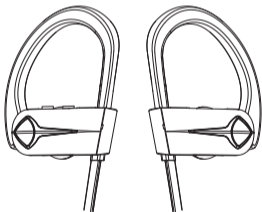


Bluetooth Headphones

User Manual

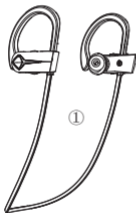
U8L



Thank you for purchasing our products, please read the user manual carefully before use.

A Package Contents

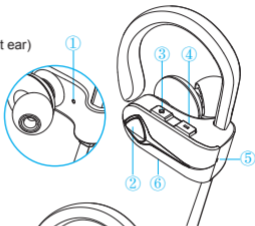
- ① Bluetooth headphones × 1
- ② Carry bag × 1
- ③ Eartips × 4 pairs (L, M, S, XS)
- ④ Micro USB cable × 1
- ⑤ Wire clip (removable) × 1
- ⑥ User manual × 1



B At a Glance

Right

(for the right ear)



Left

(for the left ear)



① Microphone

② MFB button
(multi-function button)

③ Volume + / Next

④ Volume - / Previous

⑤ LED indicator

⑥ Micro USB port

LED Indicator Guide

- **Power on:** LED indicator flashes blue for one second
- **Power off:** LED indicator flashes red for 2 seconds
- **Pairing mode:** LED indicator flashes red and blue alternately
- **Paired:** LED indicator flashes blue once every 10 seconds
- **Low battery:** LED indicator flashes red twice every 3 minutes
- **Charging:** LED indicator stays red during charging and turns blue when headphones are fully charged

C Get Comfortable

Wearing the Headphones

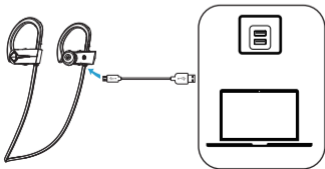
- 1) Identify the right and left earbuds.
- 2) Gently push the headphones into your ear and adjust the ear hooks until you feel comfortable with it. The eartips are in different sizes. Please choose the right size of eartips to find the most secure and comfortable option for yourself (usually the medium ones are suitable for 75% of people).



D Using the Headphones

Charge the headphones

- 1) Open the hinged door on the bottom of the right earphone.
- 2) Plug the small end of the USB cable into the Micro USB port of the headphones.
- 3) Plug the other end into a USB wall charger or computer (DC 5V) that is powered on.



Notes:

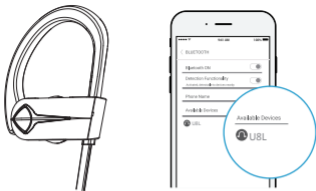
- Fully charge the headphones before using them for the first time.
- The indicator stays red during charging and turns blue when the headphones are fully charged.
- The indicator flashes red, and a voice reminder prompts when the headphones are in low battery.

Power on/off

- **Power on:** Press and hold the MFB button for 2 seconds.
- **Power off:** Press and hold the MFB button for 3 seconds when the headphones are on.

Pair

- 1) Turn on the Bluetooth of your phone or other Bluetooth devices.
- 2) Turn on the headphones when they are in shutdown state and the headphones enter pairing mode (indicator flashes red and blue alternately).
- 3) In the list of found Bluetooth devices in your phone or other Bluetooth devices, choose "U8L" to pair.



- 4) Enter "0000" or "1234" if your phone or Bluetooth device asks you to enter a code to pair.

Notes:

- When the headphones are on but are not paired with your phone or other Bluetooth devices, they will be automatically off in about 5 minutes (to enter pairing mode again, turn on the headphones).
- The headphones will directly enter pairing mode the first time you turn them on, and they will connect to the last paired Bluetooth device automatically when turned on.
- To have the headphones enter the pairing mode when the headphones have been paired with a Bluetooth device, turn off the headphones and press and hold the MFB button for 5 seconds (indicator flashes red and blue alternately).

Volume up/down, next/previous song

- Press the "+" button to increase the volume; press and hold the "+" button for 2 seconds to skip to the next song.
- Press the "-" button to decrease the volume, press and hold the "-" button for 2 seconds to skip to the previous song.

Play/pause playing songs

Press the MFB button to pause and press the MFB button again to resume playing songs.

Answer/hang up/reject calls

- Press the MFB button or operate on your phone to answer an incoming call.
- Press the MFB button or operate on your phone to hang up an ongoing call.
- Hold the MFB button for 2 seconds to reject an incoming call.

Redial the last number

Hold the "+" and "-" buttons at the same time for 2 seconds.

Activate voice assistant of phone

Press the MFB button twice, and you will hear a "Du" sound to activate the voice assistant of

your phone; press the MFB button again to exit the voice assistant of your phone.

Note:

This function works only when your phone has voice assistant function; please refer to the instructions of your phone for details.

Reset the headphones/Clear all pairing information on the headphones

- 1) Turn off the headphones.
- 2) Press and hold the MFB button for 12 seconds, and the headphones are off (You will hear the "power on" sound first and then hear the "pairing" sound; keep holding the MFB button and then you hear 3 tones; the headphones are off.)

E FAQs

Q: I paired the headphones with my phone before, but I failed to pair them to my phone again.

- A: 1) Turn on the Bluetooth of your phone and in "MY DEVICES", choose "U8L" and tap "i" → "Forget This Device".
- 2) Turn off the headphones.
- 3) Reset the headphones by holding the MFB button for 12 seconds.
- 4) Fully charge the headphones.
- 5) Pair the headphones with your phone again following the instructions in the previous part "Pair".

Q: I paired the headphones with my phone, but there is no sound from the headphones.

- A: Make sure the headphones/phone are/is not muted. Some phones ask for the setup of the wireless headphones as an audio output device before the sound is transmitted. Please refer to the instructions of your phone for details. If you use a music player or other devices, please make sure it supports A2DP stereo music profile.

Q: Why isn't the sound stable and consistent?

A: Make sure your headphones stay close to your phone (not away from your phone more than 33 feet, no obstacles between, and no radio or Wi-Fi interference nearby).

Q: Can I use the headphones during charging?

A: No, you can't use the headphones during charging.

Q: My headphones will not switch on.

A: Please recharge the headphones and make sure they have enough battery power. If they are fully charged and still nothing happens or if you are not able to charge the unit, please contact our customer support for further information.

F Specifications

- Bluetooth Standard: V5.0
- Wireless Profile: A2DP, HFP, HSP, AVRCP, SPP, PSAP
- Operating Range: 33 feet/10 meters (No obstacles between)
- Waterproof Rate: IPX7
- Standby Time: 250 hours
- Charging Time: 1-2 hours
- Talk/Playing Time: about 12-16 hours (Varies according to volume level and audio content)
- Charging Voltage: DC 5V
- Charging Current: 5V 500mA
- Battery Capacity: 120mAh/3.7V

G Attention



Use original or certified cables.



Don't expose to liquids.



Don't disassemble.



Avoid dropping.



Avoid extreme temperatures.

SAFETY AND WARRANTY

Important Safety Instructions

- Use of headphones will impair your ability to hear other sounds. Use caution while using your headphones when you are engaging in any activity that requires your full attention.
- If you have a pacemaker or other electrical medical devices, you should consult your physician before using this product.
- This package contains small parts that may be hazardous to children and should be kept out of reach from children. This product is not a toy – never allow children to play with this product. Always store the product out of reach from children. The bags themselves or the many small parts they contain may cause choking if ingested.
- Never try to dismantle the product yourself, or push objects of any kind into the products, as this may cause short circuits which could result in a fire or electric shock.
- None of the components can be replaced or repaired by users. Only authorized dealers or service centers may open the product. If any parts of your product require replacement for any reason, including normal wear and tear or

breakage, please contact us.

- Avoid exposing your product to heat and humidity to protect against damage to the product or injury to you.
- Keep all products, cords, and cables away from operating machinery.
- If the product overheats, if the product has been dropped or damaged, if the product has a damaged cord or plug, or if the product has been dropped in a liquid, discontinue use and contact us.
- Do NOT use in areas where there are explosive hazards.
- Do NOT submerge the headphones in water. Do NOT expose the headphones to moving water (e.g., from a faucet, etc.).
- Do NOT wear the headphones while showering or bathing, or when participating in water sports, e.g., swimming, waterskiing, surfing, etc.
- This product contains magnetic material. Consult your physician on whether this might affect your implantable medical device.
- Leaving the product in hot or cold places, such as in a closed car in the summer and winter conditions, will reduce the capacity and lifetime of the headphones.

- Dispose of the product according to local standards and regulations.
- Remember: Always drive safely, avoid distractions and follow local laws!

Using the headphones while operating a motor vehicle, motorcycle, watercraft or bicycle may be dangerous, and is illegal in some jurisdictions, just as use of the headphones with both ears covered while driving is not permitted in certain jurisdictions. Check your local laws. Use caution while using your headphones when you are engaging in any activity that requires your full attention. While engaging in any such activity, removing the headphones from your ear or turning off your headphones will keep you from being distracted, so as to avoid accident or injury. Do not take notes or read documents while driving.

WARRANTY

We strive to build our products with the highest attention to detail and craftsmanship. However, sometimes there are occurrences of defect.

We are happy to offer 1-year hassle-free warranty to all our products as we continue to make amazing wireless product. Please contact us if you have any questions about our devices.