



# SINGER®

# Quantum Stylist™ TOUCH

## Advanced Features. Impressive Quality.

Do it all with the SINGER Quantum Stylist Touch sewing machine! The SINGER Quantum Stylist Touch sewing machine makes beautiful results easier than ever. This sewing machine is just like your most trusted sewing friend at your side! The built-in sewing advisor and color LCD touch screen ensure sewing success every step of the way. With over 960 built-in stitches, including 6 styles of alphabets, you'll enjoy the speed, simplicity and durability of this advanced sewing machine.



### Advanced Features Add a Professional Touch

#### **Automatic Electronic Thread Trimmer**

Press the thread cutter button and the machine automatically trims threads when you are done sewing.

#### **Drop & Sew Bobbin System**

With this special top drop-in bobbin system, there's no longer any need to raise the bobbin thread before sewing. Just drop and sew!

#### **Stitch Memory with Editing**

Program up to 60 characters into the sewing machine's memory for easy retrieval, accessible even after the sewing machine has been turned off. Edit the stitches according to length, width, mirroring and elongation!

#### **Thread Breakage Sensor**

The sewing machine senses when the upper thread has broken. Sewing will automatically stop without any lost or blank stitches!

#### **25 Needle Positions**

Needle position can be changed for individual projects like inserting zippers or cording and topstitching.



#### **Extra-Large Color Touch LCD Screen**

Provides clear and easy viewing of the number and image of the selected stitch, stitch length and width settings, thread tension, and the presser foot.



#### **Built-In Sewing Assistance with Audible and Visual Messaging**

Simply touch the Help button and instantly learn more about bobbin winding, bobbin setting, threading the upper thread and changing the presser foot.



# SINGER®

# Quantum Stylist™ TOUCH



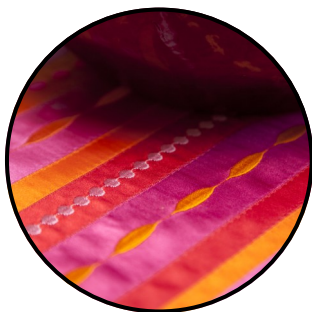
### **Automatic Needle Threader**

Threading the machine is so easy that you can have the entire machine threaded in just six seconds. Threading instructions are even printed on the sewing machine!



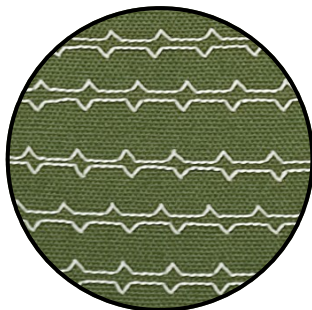
### **Presser Foot Sensor**

Ensures the presser foot is in the proper position for an easy start. The machine will not begin to sew if the presser foot is raised, reducing the chance of thread bunching



### **Stitch Elongation**

Select the elongation button and a variety of stitches can be made two to five times longer.



### **Mirror Imaging**

With just a touch of a button select stitches can be mirror imaged, adding even more stitch variety.

### **Automatic Settings Eliminate Guesswork**

#### **Automatic Stitch Length & Width**

Optimal settings for stitch length and width are automatically set, but can be overridden for more personalized sewing.

#### **Free Arm**

The removable free arm provides easy access to cuffs, collars, pant hems and other difficult-to-reach areas.

#### **Electronic Auto Pilot**

Unplug the foot control, press the Start button and the machine sews. You are still in complete control over the speed - just slide the Speed Control lever to the desired maximum speed.

#### **Needle Up / Down Button**

Pressing this button when the machine is stopped will change the needle position from down to up or from up to down.

#### **Slow Sewing Speed Button Option**

Allows you to sew at slower speeds for intricate work.

### **Take Your Creativity to the Next Level**

#### **Drop Feed with Box Feed Motion**

Lower the feed dogs for free-motion embroidery, monograms and for sewing buttons. The feed dogs move in a box motion ensuring perfect feeding throughout the entire feed process.

#### **Adjustable Presser Foot Pressure**

Adjustable presser foot pressure allows you to adjust the amount of pressure exerted on your fabric while sewing. The pressure is optimally pre-set, but feel free to override those settings for high pile fabrics or delicate fabrics like chiffon.

#### **7mm Stitch Width**

Most stitches can be set for a maximum width of 7mm creating attractive satin and decorative stitches.



# SINGER®

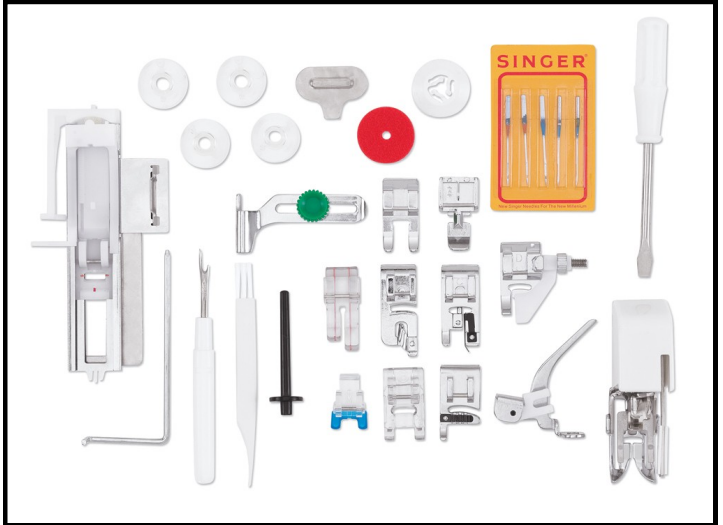
# Quantum Stylist™ TOUCH



**FREE Accessories Including  
13 Presser Feet**  
Expands your creative possibilities.



**Buttonhole Foot with Underplate**  
The Exclusive Buttonhole Foot with Underplate sandwiches fabric between lower plate and foot to ensure perfect buttonholes on multiple layers of fabric.



### What's In The Box

#### **Included Presser Feet**

All-Purpose Foot, Zipper Foot, Buttonhole Foot with Exclusive Underplate, Blind Hem Foot, Satin Stitch Foot, Overcasting Foot, Darning / Embroidery Foot, Narrow Rolled Hem Foot, Button Sewing Foot, Quarter Inch Foot, Open Toe Foot, Even Feed / Walking Foot, Cording Foot

#### **Included Accessories**

Needles, Bobbins, Seam Ripper, Lint Brush, Auxiliary Spool Pin, Spool Pin Felt, Screwdrivers, Thread Spool Caps, Edge/Quilting Bar, Soft-Sided Dust Cover, Instruction Manual, Foot Control, Power Cord

### Put Your Mind at Ease

**Heavy Duty Metal Frame** for skip-free sewing.

**25-Year Limited Warranty**

**Bobbin Class 15**

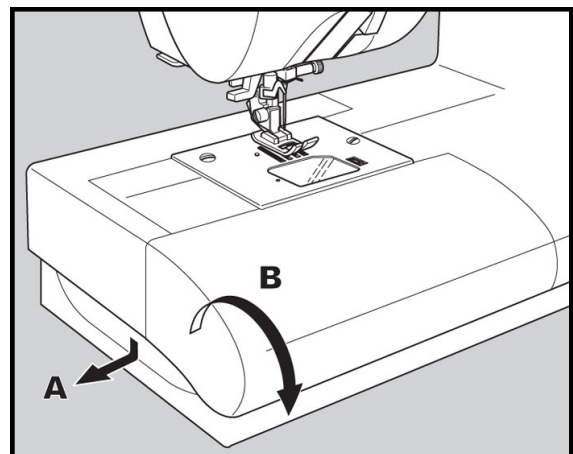
### Answers At Your Fingertips

Toll-Free Helpline 1-800-4-SINGER (1-800-474-6437)  
**Monday through Friday, 8:00 a.m. to 4:00 p.m. C.T.**

Online Support available any time at [singerco.com](http://singerco.com)  
Social Media Support allows you to connect with other sewers for tips and tricks!

YouTube.com/SingerSewingCompany offers a variety of helpful videos tutorials including the following topics: Threading, Presser Feet Training, Maintenance and Troubleshooting.

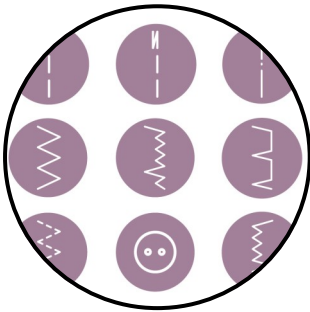
**Consumer's Choice** - More people own SINGER machines than all other brands combined!



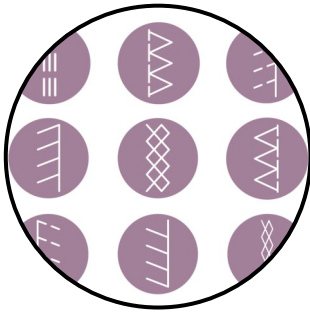


# SINGER®

# Quantum Stylist™ TOUCH



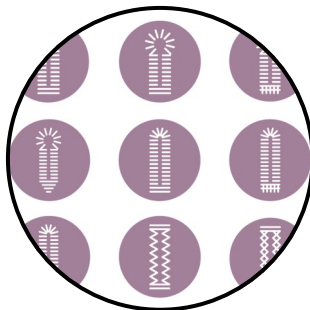
**10 Essential Stitches**  
The core stitches of construction and mending.



**21 Stretch Stitches**  
Specially designed to move with your fabric.



**919 Decorative Stitches including Alphanumeric**  
Create special details on any project.



**13 Fully Automatic Perfectly Sized Built-In Buttonhole Styles**  
Buttonhole sewing is a fully automatic one-step simple process providing reliable results every time.



**960+ Built-In Stitches with Stitch Reference Chart**

This chart located on the upper lid of the machine allows you to quickly see all of the 960+ built-in stitches and choose the perfect stitch for your project.



**6 Styles of Alphabets & Numerals with Memory**

Personalize projects by adding a monogram, name, phrase or date in five standard styles and one Cyrillic style.