



MOTORIZED TREADMILL

KBR-JK1603E



INSTRUCTION

Please read this instruction carefully before use it and keep the instruction at proper place.

Customer Service: csr@merax.com

1. CAUTION

To avoid any hurts, please read this manual carefully before using.



- For safety purpose do not stand on running belt while start.
- Please stop immediately for any feeling of vomit、 jerky during using.
- Please speed up slowly if needed.
- Adjustment of belt is prohibited during using.
- It is suggested to wear sports shoes when using the machine.
- Children、 elder、 pregnant women、 patients are prohibited to use the machine.
- Please clip the safety key on your clothing during using.
- Please firmly hold the hand bars during using.

2. SAFETY AND NOTIICE

- Please put the machine on flat ground. It is unsuitable to put the machine at following places:
 - ① Outdoors.(The machine is specially designed for indoor use only)
 - ② Slant ground or slant places on balcony.
 - ③ Sunlight area or near heater.
 - ④ Big noisy places.
- The proper power for the machine is a.c 110V.
- Error may be appeared if the power is not stable. Please do not use the same socket together with computer、 air conditioner etc.
- It is suggested to wear sports shoes and gym suit when use the machine.
- Please speed up or speed down slowly.
- Be careful of children or other objects while fold and unfold the machine.
- Do not put the machine near to wet object. Error maybe caused by water-drop.

3. CAUTION DURING USE

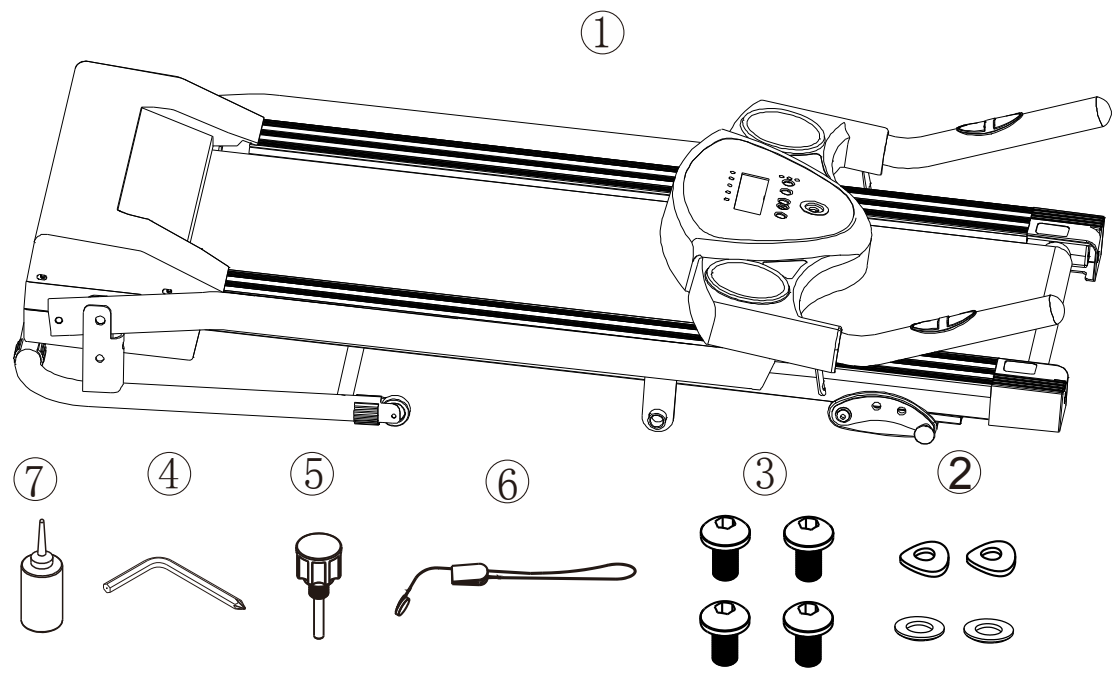
- If you do not feel well before using, please consult with your doctor or coach.
- It is not our company's responsibility for any improper use by user to cause body injured.
- Please pull up plug after using.
- Please pull out plug for any movement or change parts for the machine.
- Children、 elder and pregnant women are prohibited to use the machine. Patients need doctor's consultant before using.

- Please place the machine on flat places. Do not locate any objects 2M behind the machine.
- Do not start the machine when it is folded.
- Water-drop is prohibited to run into the machine , especially to motor, power line and plug.
- Danger may cause if wearing long dress or other unsuitable dresses during use.
- Enclose spaces, air uncirculated places and with flammability places are prohibited to use the machine.
- Do not put any objects on the machine.
- Put away the plug from heated place or fire seat.
- Please switch off all functions and pull out plug after using.
- Please do not stand directly on the belt while starting the machine.
- Do not disassemble the machine without conduct of professional person.
- Please make sure the running belt is fastened before using.

4. Technical Specification

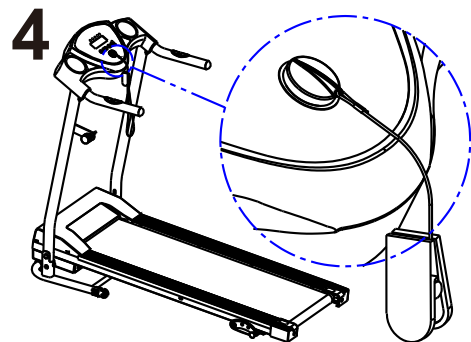
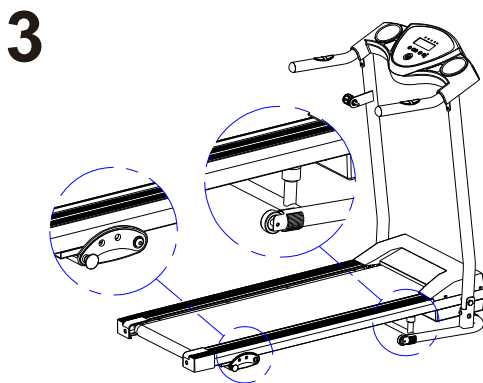
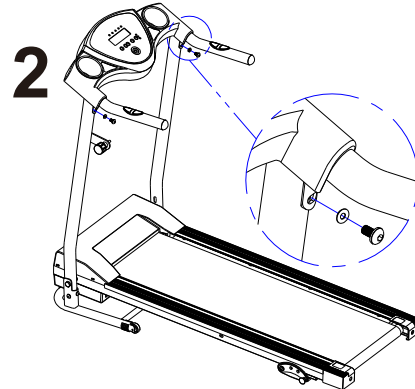
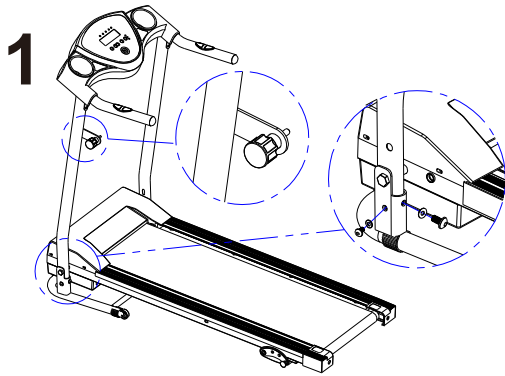
| | |
|-----------------------|--------------|
| Product Name | Treadmill |
| Power | 500W |
| Voltage | 110V |
| Frequency | 60Hz |
| Speed | 1-10km/h |
| Net Weight | 28kg |
| Maximum Weight | 100kg/220Lbs |

5. Hardware and Tools



| Serial NO. | Part Name | Spec | qty | unit |
|------------|-------------------|--------|-----|------|
| 1 | Main Frame | | | |
| 2 | Pad | φ 8 | 4 | PCS |
| 3 | Socket head screw | M8*15 | 4 | PCS |
| 4 | Hex. Wrench | | 1 | PCS |
| 5 | Fix knob | M16*55 | 1 | PCS |
| 6 | Safety key | Red | 1 | PCS |
| 7 | Silicone oil | | 1 | PCS |

5. Assemble Instruction



1. Place the treadmill on the ground, unfold the treadmill by hand carefully. Tighten the frame to the base with 4 socket head screws in the tool bag (2 screws on each side).
2. Unfold the panel and fix the panel to the supporting frame with the pre-installed screws (See Fig 2)
3. The knob at the bottom of the frame can turn around based on the the position of the adjuster, and make sure the knob withstand the base and steady enough. (See Fig 3)
4. [Important] Put safety key on the computer and finish the assembly (See Fig 4)

6. Control Panel



①SPEED (KM/H) : 1.0~10.0KM/H

②DISTANCE (METER) : 1~9999METER

③CALORIE (CAL) : 1~9999CAL

④TIME (MINUTE : SECOND) : 00:00~60:00

1. Plug in the power, open the power switch on the backside of the base, the screen display "ERR", put on safety key and the screen display "OFF"

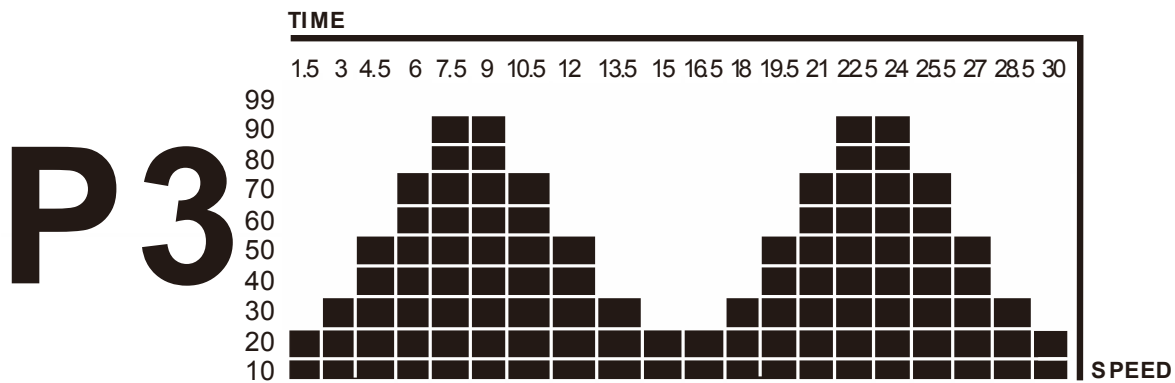
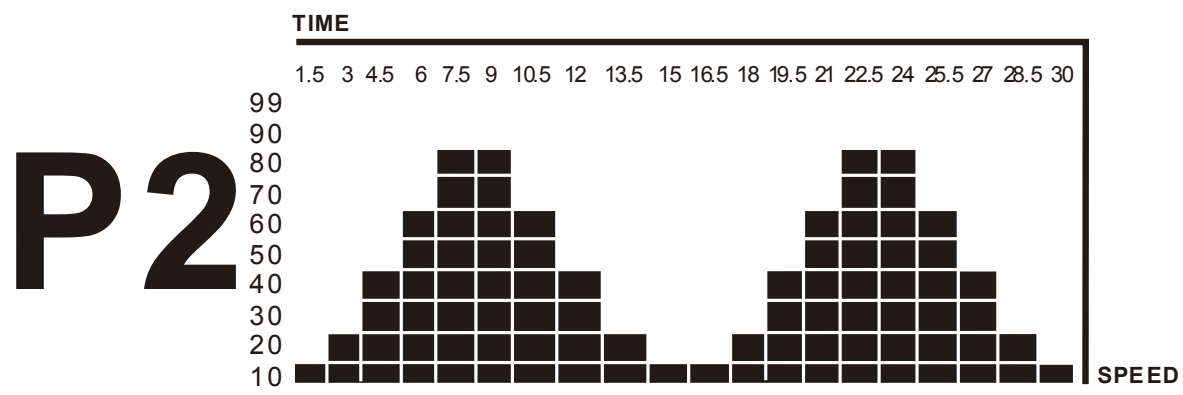
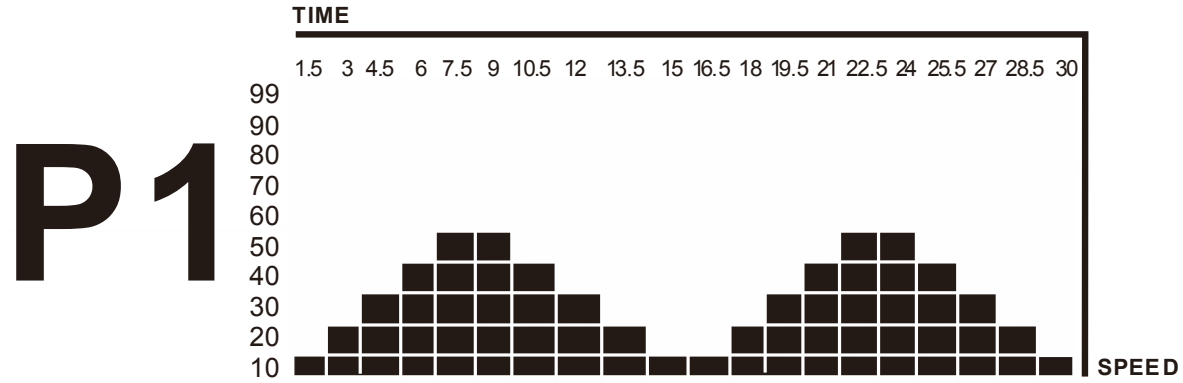
2. When the screen display "OFF", Press "START/STOP" key, the machine will start by 1km/h after 3 seconds. Press "START/STOP" again to stop the machine.

3. Press "+" key for speed up and "-" for slow down, the lowest speed is 1.0KM/H, the fastest is 10.0KM/H.

4. Press "MODE" key, the screen will display from SCAN、SPEED、TIME and CAL.

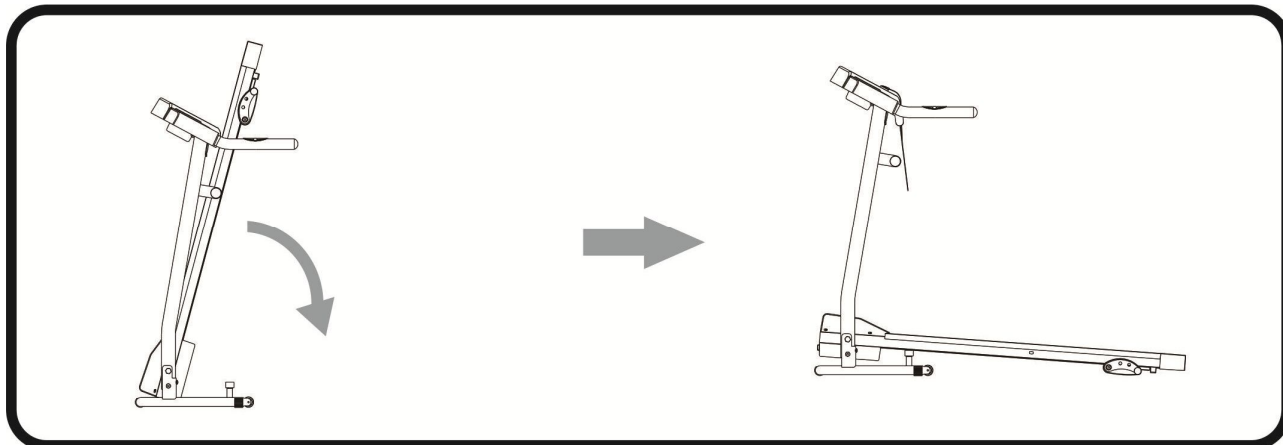
5. Press "AUTO" key, select auto mode P1-P2-P3, the light on means the machine worked .

7. Auto Mode

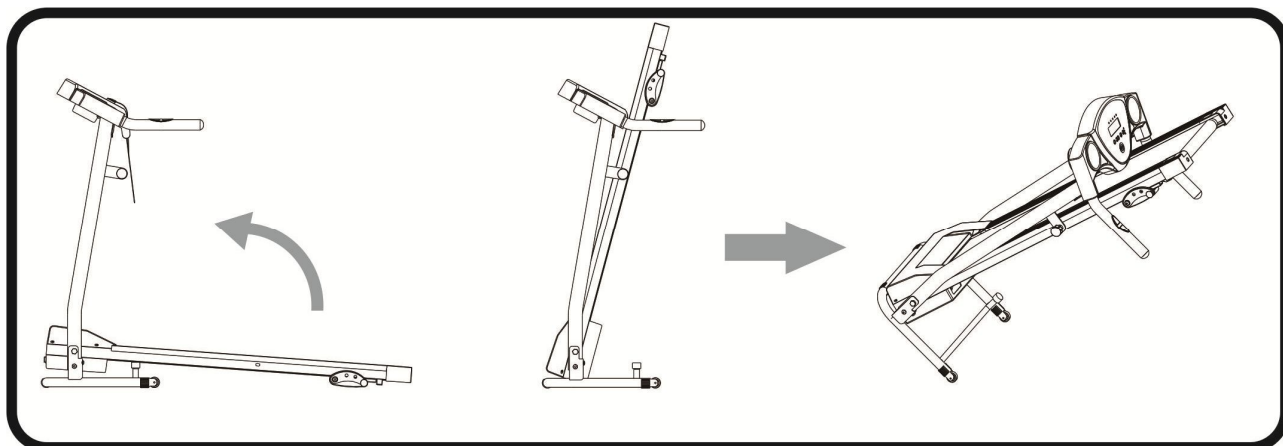


8. Unfold Fold and Move

Unfold: Pull the tensile Knob and put the base on the ground smoothly



Fold and Move: After use, please fold the machine and insert the tensile Knob.

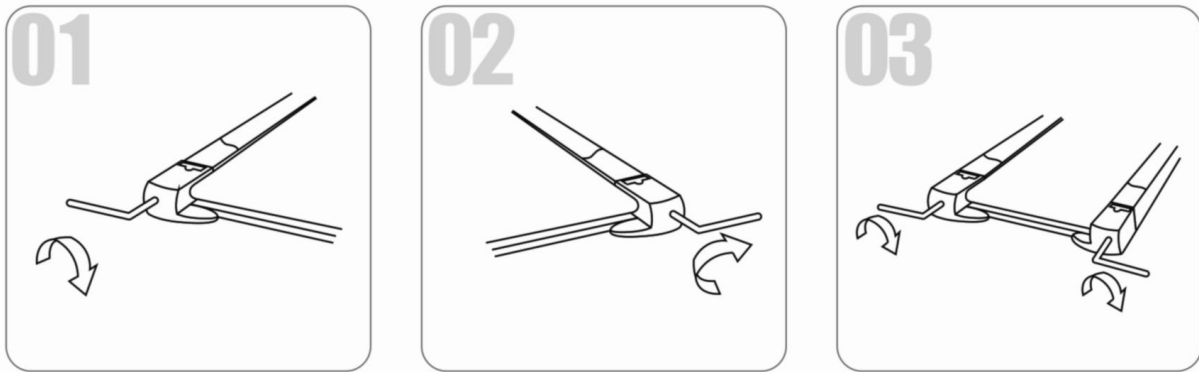


9. USAGE OF SILICONE OIL



Pull up the running belt tightly . Then put the silicone oil to running board. Then start the machine to running 3 minutes without loading. It is better to maintain like this every 30 working hours of the machine. This can save the lifetime of parts.

10. Runbelt Adjustment



(1) Running belt deviate to left

Start the machine at 2-3Km/h without loading, adjust by tightening the left side clockwise for a quarter of half turns(see fig1). keep running the machine without loading for 1-2 minutes. Please adjust like this till the belt move to mid place.

(2) Running belt deviate to right

Start the machine at 2-3Km/h without loading, adjust by tightening the right side clockwise for a quarter of half turns(see fig2). keep running the machine without loading for 1-2 minutes. Please adjust like this till the belt move to mid place.

(3) Running belt logjam

If the running belt is in dead condition, it can be adjusted by loosening both sides evenly. Turn counter-clockwise to loosen the running surface.

(4) Running belt slippy

If the running surface becomes slippy it can be adjusted by tightening both sides evenly. Turn clockwise to tighten the running surface.

11. Daily Maintain

1. Please switch off and cut off power before checking the machine or clearance.
2. Clear belt and dial plate after used, one time every week at least.
3. Check and tight screws and spines at fixed period.
4. Do not hang up clothes etc to the machine,