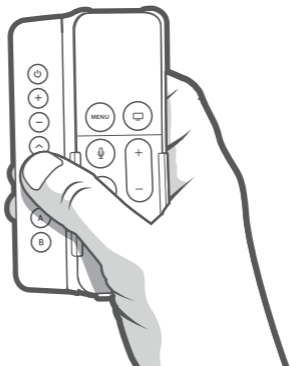


sideclick™

Streamline your Streaming Experience



Universal Remote Attachment for

Apple TV®

2nd Generation | 3rd Generation | 4th Generation

What's Included

- Sideclick Universal Learning Remote
- 2 AAA Batteries
- 2 Adapter Clips

Simple Setup

- 1- Insert the included 2 AAA Batteries into your Sideclick Remote.
- 2- Attach Adapter Clip to Sideclick Remote. (directions on reverse)
- 3- Slide Apple TV® remote into Adapter Clip.
- 4- Program Sideclick and you're ready to go.

Tips

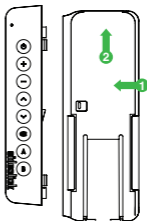
Please visit our website, www.sideclickremotes.com for additional information including:

- Assembly videos
- Programming videos
- Troubleshooting
- Additional Sideclick products and accessories
- Registering your device

All Rights Reserved. Sideclick Remotes operates under True Bloom LLC and is not affiliated with Apple Inc.

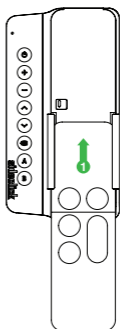
Attach Your Clip

- 1 - If you have the 4th generation Apple TV touchpad remote, proceed to the "Install Your Remote" section below.
- 2 - If you have the 2nd or 3rd generation silver Apple TV remote, jump to the "Removing Your Clip" section below and then continue with step 3 of this section.
- 3 - Line up tabs on Sideclick remote with keyholes in clip.
- 4 - Press clip against Sideclick remote and slide clip up until it locks in place.



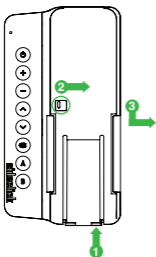
Install Your Remote

- 1 - Slide your streaming device remote into the clip from the bottom until the locking tab secures it in place.



Program Your Sideclick

- 1 - On Sideclick, hold down the **⏻** + **B** buttons simultaneously until the LED lights solid.
- 2 - Position your Sideclick remote and the device remote you are learning from on a table, head to head, approximately 1 inch apart.
- 3 - Press and release the Sideclick button you wish to program. The LED will start blinking.
- 4 - Press and release the button you want it to learn from on your device remote.
 - The LED will blink 3 times indicating a successful learn, then will return to solid indicating you are ready to program other buttons.
 - If the LED does not return to solid, a problem in programming has occurred. Exit programming mode via step 6 and try again.
- 5 - While LED is on solid, repeat steps 3 & 4 for each button you would like to program.
- 6 - To exit programming mode, press the **⏻** + **B** simultaneously and the LED will turn off. You can also wait approximately 10 seconds and it will exit programming mode automatically.
- 7 - Your Sideclick is now ready to use.



Removing Your Clip

- 1 - Remove streaming device remote by pushing down on the remote locking tab at the base of the clip and sliding remote downward out of clip.
- 2 - Gently slide release tab to the right as indicated in picture
- 3 - While maintaining pressure on the tab, slide clip down and then away from remote.