

POWERHOUSE INTERNATIONAL

Dear Valued Customer,

Thank you so much for your order. We are a family-owned business in Lincoln, NE and customer service is our priority. If you have any questions about your product, please feel free to email me at nepowerhouse@gmail.com or call or text my personal cell number at 402-890-6306. We also have a tutorial and assembly video on YouTube. Please search The Force 2000 assembly tutorial or you can find it on our website (www.powerhouse-intl.com). We are fairly new to selling online and positive feedback and 5-star product reviews are very important to our family business. If you are happy with our customer service and/or our product, would you please leave us positive seller feedback and a positive product review? It would mean A LOT to us! If you have ANY questions or concerns please do not hesitate to contact me. We want you to be happy with your purchase.

Thanks again!

Nichole Ernst
CEO Powerhouse International

THE FORCE 2000

SET UP & OPERATING MANUAL



 **WARNING:** Do not use the appliance without reading this manual first.

POWERHOUSE INTERNATIONAL

1 Year Warranty

All Powerhouse International products come with a 1 Year Warranty valid only in the 48 continental United States. If you purchase this product and ship it to a destination outside the 48 continental United States, this warranty becomes null and void!

The first 30 days are covered from the date of receipt of the product. If your product becomes damaged in shipment or is found to be defective in any way during this period, we will replace it or issue a complete refund for your product, and we will pay all shipping involved, to and from, within this first 30-day period.

If you have “buyer’s remorse” and decide that you do not want the product, it must be returned new and unused in the original box and you must pay the return shipping. PLEASE NOTE: There will be a 10% restocking fee and original shipping costs will not be refunded. Used product cannot be returned!

The remainder of the first year (after the first 30 days) is covered by a “Free Repair” warranty (parts and labor included). If anything becomes defective during this period, we will fix it and give a full service inspection to your product, but shipping (to and from) may be paid by buyer. Please email us at nepowerhouse@gmail.com for a service authorization number and tell us what is wrong with your unit.

Please keep this page and write the first and last name of who ordered and the date you received the product in case you ever need to use this warranty. This information WILL BE REQUIRED for any type of service/repair or return/refund!

First and last name on order _____

Date received _____

KEEP THIS WARRANTY for your records. DO NOT send it back to us. Your purchase has been recorded in our database.

Contents

Parts Overview	2
Technical Data	2
General Safety Instructions	3
Servicing a Double-Insulated Appliance	
Extension Cords	
Operating Precautions for the Force 2000	
Assembly & Connections	6
Mount the Storage Hooks	
Connect the High-Pressure Hose	
Attach the Trigger Gun	
Attach the Lance	
Attach a Nozzle	
Connect the Garden Hose	
Plug-in the Power Cord	
Operating the Pressure Washer	10
Safety Devices	
Starting the Washer	
Stopping the Washer	
Cleaning Attachments	
Hose Reel	
After Use Instructions	
Maintenance	14
Clean the Inlet Filter	
Clean the Air Vents	
Grease the Couplings	
Unclog Nozzles	
Troubleshooting	15

Parts Overview

Unpack the carton and check that you have all the parts listed here:

- The Force 2000 pressure washer
- High-pressure hose (attached to reel)
- Trigger gun and lance
- Soap foam sprayer
- Patio Cleaner
- Two nozzles
- Two storage hooks
- One wrench
- A bag containing this manual, a cleaning needle, and an extra washer



Technical Data

Rated Pressure	1800 psi
Max. pressure	2000 psi
Rated Flow	1.35 GPM
Max. Flow	1.60 GPM
Current	13A
Voltage	120V/60Hz
Inlet (max)	80 psi
Protection class	II
Water temperature (max)	60 F

General Safety Instructions

- Stay alert! Watch what you are doing.
- Do not operate the washer when fatigued or under the influence of alcohol or drugs.
- This washer is provided with a Ground Fault Circuit Interrupter (GFCI) built into the power cord plug. If replacement of the plug or cord is needed, use only identical replacement parts.
- The washer is intended for outdoor use. Do not use inside.
- Follow the maintenance instructions specified in this manual.
- Store the washer in an area that is clean and protects the washer from freezing.



Servicing a Double-Insulated Appliance

In a double-insulated product, two systems of insulation are provided instead of grounding. No grounding means is provided on a double-insulated product, nor should a means for grounding be added to the product. Servicing a double-insulated product requires extreme care and knowledge of the system, and should be done only by qualified service personnel. Replacement parts for a double-insulated product must be identical to the parts they replace.

A double-insulated product is marked with the words “DOUBLE INSULATION” or “DOUBLE INSULATED.” The following symbol may also be marked on the product:



Extension Cords

Use only extension cords that are intended for outdoor use. These extension cords are identified by a marking:

“Acceptable for use with outdoor appliances; store indoors while not in use.”

Use only extension cords having an electrical rating greater than the rating of the product. Do not use damaged extension cords. Examine extension cord before using and replace if damaged. Do not abuse extension cord and do not yank on any cord to disconnect. Keep cord away from heat and sharp edges. Always disconnect the extension cord from the receptacle before disconnecting the product from the extension cord.



WARNING: To reduce the risk of electrocution, keep all connections dry and off the ground. Do not touch plug with wet hands or while standing in water.

Operating Precautions for the Force 2000

IMPORTANT! DO NOT LET THIS PRODUCT FREEZE!

When using this product, basic precautions should always be followed:

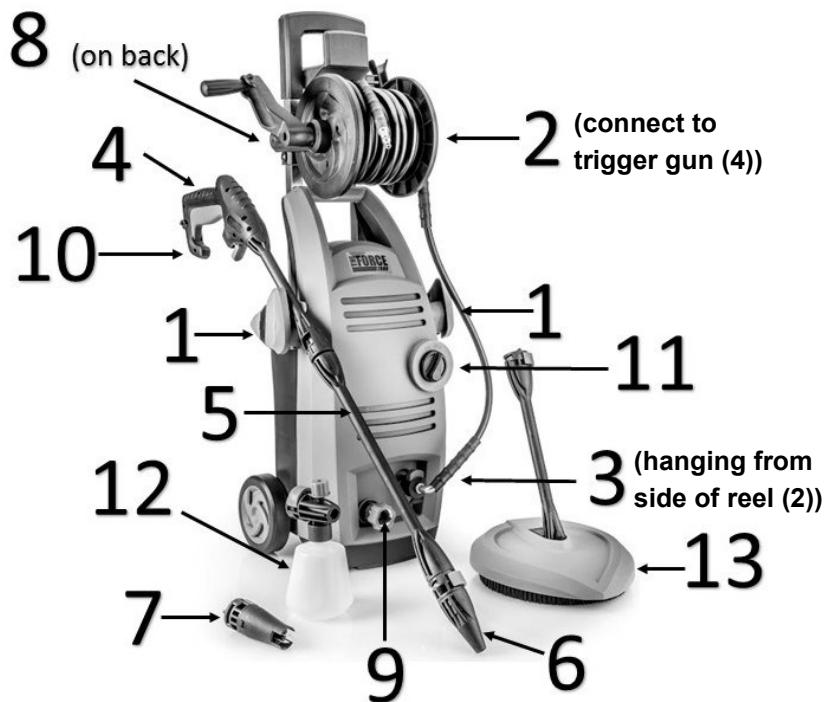
- Read all instructions before using the washer.
- To reduce the risk of injury, close supervision is necessary, especially when the washer is being used near children or animals.
- Do not use the washer in areas where flammable items are present.
- Know how to stop the washer and bleed pressures quickly. Be thoroughly familiar with the controls of the washer. Before each use, pressure must be released! Press the trigger on the wand, **then** start the washer.
- Do not over-reach or stand on unstable support. Keep good footing and balance at all times.
- To reduce the risk of electrocution, don't start or run the washer in the rain or a storm. Keep all connections dry and off the ground. Do not touch plug with wet hands. Do not let water leak into the washer, as this will invalidate the warranty.
- Do not leave the washer running unattended.

- This washer has been designed for only using clean water. Do not use corrosive chemicals.
- When the washer is running, maintain a constant water supply. Without water circulation the sealing rings of the washer will be damaged.
- Don't start and run the washer in a place excessively cold to prevent the washer from freezing.
- Do not use the washer within the range of persons unless they wear protective clothing and eyewear.
- Do not direct the jet against yourself or others to clean clothes or footwear.
- Disconnect from the electrical power supply before carrying out any user maintenance.

Assembly & Connections

In addition to these instructions, a video tutorial is also available at www.powerhouse-intl.com or YouTube (search for The Force 2000).

Throughout this manual numbers are used to help identify parts. Use the following diagram to reference the parts:



- | | |
|---|----------------------------|
| (1) Storage hooks | (7) Multi-function nozzle |
| (2) Reel & high-pressure hose
(connect to trigger gun) | (8) Storage pins |
| (3) High-pressure hose quick
connector to washer | (9) Water hose connection |
| (4) Trigger gun | (10) Safety locking device |
| (5) Lance | (11) Power switch |
| (6) Turbo nozzle | (12) Soap foam sprayer |
| | (13) Patio cleaner |

Mount the Storage Hooks

Slide the storage hooks (1) onto the holders, as shown at right.



Connect the High-Pressure Hose



The high-pressure hose hanging from the side of the reel (2) has an "L" shaped connector at the end.

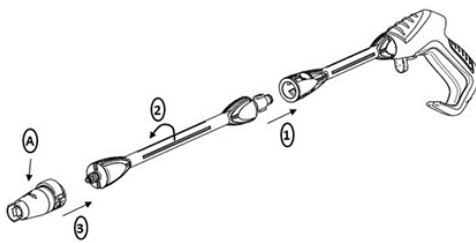
Press the button on the pressure hose quick connector (3) at the bottom of the washer (see diagram at left) and snap in the "L" shaped connector.

Attach the Trigger Gun

As indicated in the diagram at right, attach the high-pressure hose to the trigger gun (4) by pressing it into the connector. You will hear and feel a click.



Attach the Lance



As shown at left, push the lance (5) into the trigger gun. When inserted, turn it until it locks in place.

Caution: Make sure the lance is properly attached to the gun.

Attach a Nozzle

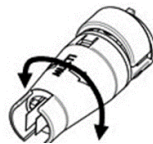
When attaching the nozzle, the button ((A) in the diagram above) on the nozzle should pop out again. Check before pressing the trigger that the nozzle is properly inserted and the button has popped back out. You must line up the indents on the nozzle for it to connect correctly.

The Force 2000 Pressure Washer comes with two different nozzles. As shown at right, the Turbo Nozzle (6) is on top, and the Multi-Function Nozzle (7). Each is described below.

When not in use, nozzles can be stored on the storage pins (8) on the back of the washer.



Multi-Function Nozzle



The spray from the multi-function nozzle, from a direct stream to a fan spray, can be adjusted by turning it.



WARNING: Do not adjust the nozzle while operating, as injury to hands can occur.

Turbo Nozzle

The turbo nozzle is a high-pressure nozzle that makes a circular pattern to clean debris and can be used for most cleaning tasks.

Connect the Garden Hose

A ½" garden hose between 10 and 25 ft. in length will be suitable. Let the water run through the water hose to flush any sand and dirt before connecting it to the washer to prevent damage to the washer.

Important! Only use water without any impurities. If there is a risk of sand particles in the inlet water (*i.e.*, from a well), an additional filter should be used.

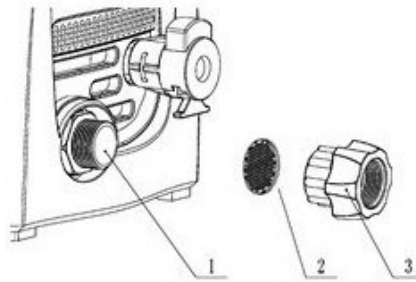
Note: Check that the filter is in place, clean, and not clogged.

Caution: Failure to use the filter will invalidate the warranty.



Connect the water hose to the water hose connector (9), at bottom left in the diagram. There is an inlet filter already fitted in the coupling to filter out impurities, as these will damage the pump valves. There is also a rubber gasket fitted into the inlet (and an extra in the bag with this manual). If the

hose leaks where it connects to the machine, make sure that the gasket is in place. Two gaskets can be used if necessary. You can tighten the connection with the enclosed wrench. At right is a picture of the filter (#2) location, if you need to clean it.



Turn the water fully on.

Plug-in the Power Cord

Refer to the “General Safety Instructions” section above for safety precautions.

Operating the Pressure Washer

Refer to the diagram on page 6 for the numbered parts and features referenced in this section.

Safety Devices

Safety Locking Device. The trigger gun (4) features a safety-locking device (10). When the safety is activated (shown at right), the trigger gun cannot be operated.

Thermal Sensor. A thermal sensor protects the motor against overloading. The washer will restart after a few minutes when the thermal sensor has cooled.



Starting the Washer

The trigger gun (4) and lance (5) have a kick (thrust) when operated. Please hold them firmly with both hands.

Important! Point the nozzle at the ground.

1. Check that the washer is in upright position. **Note:** Do not place the washer in high grass. The washer needs air circulation!
2. Release the trigger safety lock (10).
3. Press the trigger of the trigger gun (4) and let the water run until all air has escaped from the water hose.
4. Turn the power switch (11) to the left to turn on the washer.
5. Press the trigger of the trigger gun.

Important! The washer only runs when the trigger is depressed on the spray gun. It takes a minute to force the air out of the hose and pump. The water spray may sputter and change PSI during this time, but this is normal and will become consistent when the air is out of the washer.

6. Always adjust the distance (and thus the pressure) of the nozzle to the surface you are cleaning.

Do not cover the washer during operation!

Stopping the Washer

Note: The washer must be switched off, using the power switch (11), when left unattended or not used:

1. Turn the power switch (11) to the right to turn off the washer.
2. Disconnect the electrical plug from the socket (do not pull cord).
3. Shut off the water supply.
4. Press the trigger to relieve the washer of pressure.
5. Lock the trigger gun safety.

When releasing the trigger of the trigger gun, the washer motor automatically stops. The washer motor will start again when you re-press the trigger of the trigger gun.

Cleaning Attachments

Soap Foam Sprayer (12)

Unscrew the container (A) from the foam sprayer. Add soap to the container and screw the container to the foam sprayer. Adjust the amount of soap with the knob (B).

Note: Adjust the foam spray with knob B. If you want to spray water only, turn it to close.

The soap sprayer is equipped with a quick connector. Press C, then insert into the end of the lance (5).

Since the soap output is adjustable, the bottle has air intake holes at the top. It will leak soap if it is not upright. To avoid this, store the soap bottle on the pin on the back of the washer (8) in the upright position when not in use.

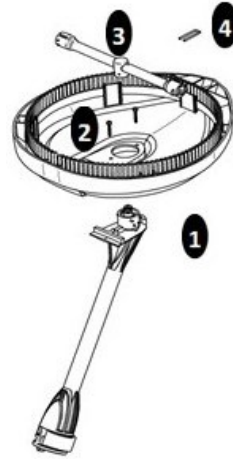
Caution: When attaching the soap bottle, the button (C) should pop back out. Check before pressing the trigger that the nozzle is properly attached.



Patio Cleaner (13)

To assemble the patio cleaner:

- ❶ Insert the extension lance into to the top of the grey housing.
- ❷ Attach the extension lance to the underside of the grey housing with the 2 screws in a bag taped to the interior of the housing.
- ❸ On the underside of the grey housing, insert the white rotor arm into the extension lance and push until it snaps into place.
- ❹ Insert the U-pin included in the bag with the screws to secure the white rotor arm.



Note: Make sure the rotor arm is properly attached to the extension lance with the U-pin.

Hose Reel

The hose reel (2) is used for storage of the hose. Use the handle to reel in the hose.



WARNING: Always fully extend the hose before using so that the unit doesn't tip over. Do not use the hose reel (2) when the high pressure hose is in use or under pressure. This may damage the seals and invalidate the warranty.



After Use Instructions

The washer and accessories should be stored in a room that is 60-80 degrees (never store in a room that will freeze or outside).

Pump, hose, and accessories should always be dry prior to storing:


1. Turn the power switch (11) to the right to turn off the washer and detach the water hose after shutting off the water supply.
2. Restart the washer (turn the power switch (11) to the left) and press the trigger of the trigger gun (4). Let the washer run until no

more water runs through the trigger gun.

3. Turn the power switch (11) to the right to turn off the washer and remove the high pressure hose (2) and nozzle (6/7). Detach the high-pressure hose by pressing the quick release button on the trigger gun and the high-pressure hose connector.

Caution: When you detach the high-pressure hose, be sure you have released the water pressure by turning off and disconnecting garden hose and expelling remaining water from the washer by depressing the trigger. This will enable disassembly.

4. Unplug, and wind up hose.
5. Place trigger gun (4), lance (5), nozzles (6/7), and other accessories in storage pins (8) on the back of the washer. The storage hooks on the side of the washer can be used for storage of the trigger gun and the spinning patio cleaner.
6. The hook at the top of the washer by the handle stores the power cord.

 **WARNING:** Never start up a frozen washer. Frost damages are not covered by our warranty!



Maintenance

Clean the Inlet Filter

Clean the water inlet filter once a month, or more frequently, according to use.

Carefully loosen the filter with a screwdriver and clean it (see the diagram at the bottom of page 6). Check that it is undamaged before re-mounting it.

The inlet filter must always be fitted inside the water inlet connector to filter out sand, limestone, and other impurities, as they will damage the pump valves.

Caution: Failure to use the filter will invalidate the warranty.

Clean the Air Vents

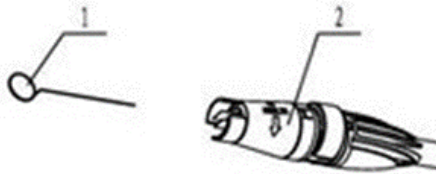
The washer should be kept clean so as to let cooling air pass freely through the vents.

Grease the Couplings

For an easy connection, and so the o-rings do not dry up, the couplings should be greased regularly.

Unclog Nozzles

The needle in the bag can be used if a nozzle is clogged.



Troubleshooting

Symptom	Cause	Recommended action
Washer refuses to start	Trigger not depressed	The washer only runs when the trigger is depressed on the spray gun.
	Washer not plugged in	Plug in washer.
	Defective socket	Try another socket or check GFIC in socket.
	GFIC has tripped on washer	Follow directions to reset GFIC on back of washer plug.
	Defective extension cable	Try without the extension cable.
Fluctuating pressure (this will happen for the first couple minutes of use while air is being pumped from washer)	Water supply not sufficient	Increase water pressure, check for blockage of garden hose, and/or change to larger hose.
	Valves dirty, worn out, or stuck	If within the 1 Year Warranty period, e-mail us at nepowerhouse@gmail.com . If not, take it to a qualified appliance repair shop.
	Pump is sucking air	Check that hoses and connections are air-tight.
	Pump seals worn	If within the 1 Year Warranty period, e-mail us at nepowerhouse@gmail.com . If not, take it to a qualified appliance repair shop.
Washer stops	GFIC has tripped	Follow directions on the back of the plug to reset GFIC. Also check reset button on the outlet.
	Incorrect voltage	Check that the voltage corresponds to specification on the name plate.
	Thermal sensor activated	Turn washer off and wait 5 minutes for washer to cool down.
	Nozzle partially blocked	Clean the nozzle with the needle included with manual, and by spraying water backwards through the nozzle.
Washer pulsating	Air in inlet hose/pump	Depress trigger until regular working pressure resumes.
	Inadequate supply of water	Increase water pressure, check for blockage of garden hose, and/or change to bigger hose.
	Nozzle partially blocked	Clean the nozzle with a needle included with manual, and then by spraying water backwards through the nozzle.

Troubleshooting

Symptom	Cause	Recommended action
Washer pulsating	Water filter blocked	Clean the filter.
	Hose kinked	Straighten the hose.
Washer often starts and stops by itself	Pump and/or trigger gun is leaking	If within the 1 Year Warranty period, e-mail us at nepowerhouse@gmail.com . If not, take it to a qualified appliance repair shop.
	No water supply	Connect inlet garden hose.
Washer starts but no water comes out	Water filter blocked	Clean the filter.
	Nozzle blocked	Clean the nozzle with a needle included with the manual, and by spraying water backwards through the nozzle.
Water leaks from hose intake	Washer missing or damaged, or connection is loose	Check for washer, tighten with wrench, and make sure hose intake is not bent.