



## VX-3i LRP RIFLESCOPE OWNERS MANUAL

Complete Installation & Operations Instructions

## About Leupold & Stevens, Inc.

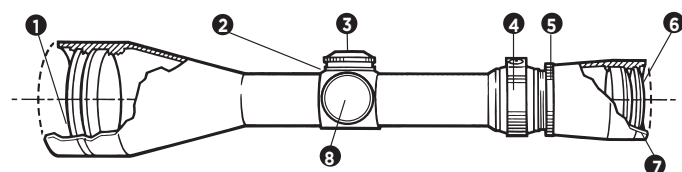
Today, Leupold optics are renowned for their unchallenged ruggedness, absolute waterproof integrity, and their vastly superior optical quality. More than a century of optical, engineering and manufacturing experience goes into every product we produce, and we think the results are well worth the extra effort required to achieve this level of quality.

In true American style, the philosophical foundation laid in our early years served as a template for the company as we've grown and changed over the decades. In fact, the firm's founder established the clarity of purpose that we see at Leupold & Stevens today:

"We solemnly promise never to let down on quality, the customer is entitled to a square deal."

- Markus Friedrich "Fred" Leupold

## Know Your Scope



<p><b>CAUTION</b></p> <p>Always check and be certain that the firearm is unloaded before undertaking any work upon it.</p>	1 Objective Lens	4 Power Selector Ring	7 Eyepiece
	2 Windage Adjustment (opposite side of scope)	5 Eyepiece Lock Ring	8 Side Parallax Adjustment
	3 Elevation Adjustment	6 Ocular Lens	

### INSTALLING THE BASE, RINGS, AND SCOPE

Please refer to the instructions included with the base and rings for their proper installation on the firearm.

### ESTABLISHING EYE RELIEF

Because of the safety considerations associated with proper eye relief, Leupold strongly recommends that you mount your scope as far forward as possible. Beyond that, follow these steps:

1. With the scope as far forward in the mounts as possible, hold the rifle in your normal shooting position. (Variable power scopes should be set at the highest magnification for this process.)
2. Slowly move the scope to the rear just until you can see a full field-of-view.
3. Position your scope here for maximum eye relief.

### COMPLETING THE INSTALLATION

1. Without disturbing the optimal eye relief position, rotate the scope until the elevation adjustment dial is at the top of the scope.
2. From a firing position, check to be sure that the vertical hair of the reticle aligns with the vertical axis of the firearm.
3. Tighten the ring screws evenly and securely.

### FOCUSING THE RETICLE

Secure the scope and firearm in a firm rest. Safely point the scope at a light colored background.

1. If the eyepiece has a lockring, grasp the eyepiece with your hand and rotate counterclockwise until the lock is loose.
2. Look through the scope while pointed at a light colored background. Look away every so often to relax your eye between focus checks. Rotate the eyepiece and recheck focus repeatedly until the reticle is sharp.
3. If your eyepiece has a lockring, retighten the lockring against the eyepiece.

## Making Precise Windage And Elevation Adjustments

The Leupold VX-3i LRP riflescopes are available with two different adjustment increments, 1/4 MOA per click or 1/10th Mil per click, depending on model. The letters found on the windage and elevation dials refer to the direction that the point-of-impact of the bullet is moved when an adjustment is made.

### ADJUSTING WINDAGE AND ELEVATION ON VX-3i LRP RIFLESCOPES

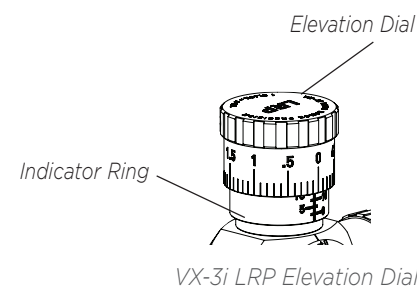
Leupold VX-3i LRP riflescopes have micrometer style elevation adjustments. A click for each adjustment division can be both heard and felt so adjustments to the scope can be made without looking at the dials. Indicators on the micrometer portion of the dial show the distance traveled per turn from zero in either MIL or MOA.

### ZEROING THE VX-3i LRP WINDAGE AND ELEVATION DIALS AFTER SIGHTING IN

All Leupold scopes feature adjustment dials that can be repositioned to align the marked zero of the dial with the position indicator. This allows the shooter to know the original zero of the rifle in the event that further adjustments are made in the field.

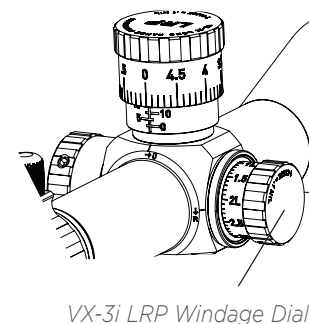
To reposition the dials and the zero stop on VX-3i LRP adjustments:

1. Loosen the set screws on top of the dial until it moves freely.
2. Rotate the dial until the -0- on the indicator ring/zero stop aligns with the bottom of the dial.
3. Tighten the set screws until the dial is secure.



To reposition the VX-3i LRP windage dial:

1. Loosen the set screw the top of the dial until it moves freely.
2. Turn the dial by hand to align the zero with the witness mark at the base of the dial.
3. Tighten the set screw until the dial is secure.



### UNDERSTANDING PARALLAX

Parallax is the apparent movement of the target relative to the reticle when you move your eye away from the center point of the eyepiece. It occurs when the image of the target does not fall on the same optical plane as the reticle. This can cause a small shift in the point of aim.

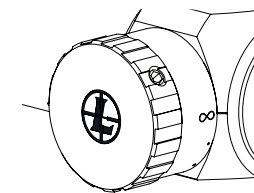
Maximum parallax occurs when your eye is at the very edge of the exit pupil. At short distances, the parallax effect does not affect accuracy. It is also good to remember that, as long as you are sighting straight through the middle of the scope, or close to it, parallax will have virtually no effect on accuracy in a hunting situation.

### SETTING THE ADJUSTABLE PARALLAX

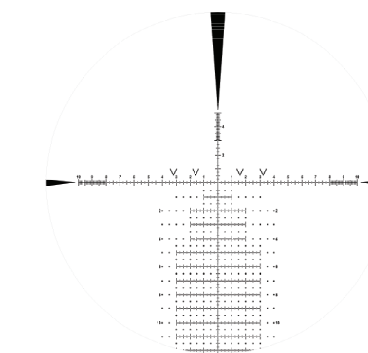
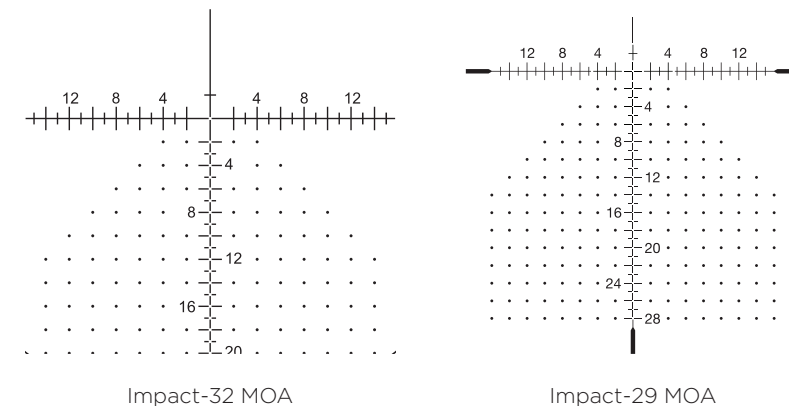
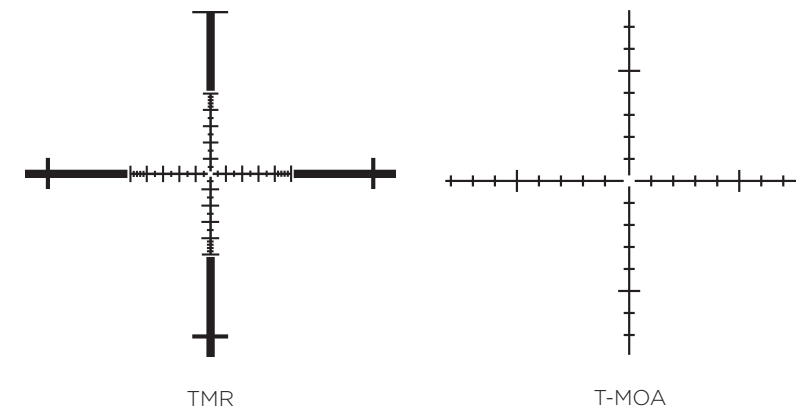
1. The reticle should be clear (focused) before adjusting the parallax. If it is not, follow the instructions under "Focusing the Reticle."
2. With the firearm in a stable position, look through the scope, concentrating on the center aiming point of the reticle.
3. Move your head slightly up and down while turning the side parallax or adjustable objective ring until the reticle does not move in relation to the target.

NOTE: Settings may vary slightly per individual preferences, air temperature, and atmospheric conditions.

NOTE: The side focus adjustment knob is not to be used to focus the target image. If the reticle is first focused and the parallax then properly set, the image should be clear.



Side Focus Adjustment



FFP CCH

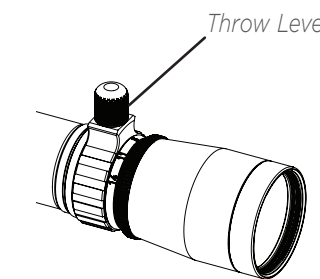
## Included Accessories

### POWER SELECTOR PLUG

Your VX-3i LRP is equipped with a removable throw lever. If you choose to remove it, simply unscrew it and replace it with the included plug.

### WINDAGE THREAD PROTECTOR

Your VX-3i LRP is equipped with a windage adjustment cover installed. If you prefer to use the scope without this in place, replace the cover with the included thread protector.



# Leupold Means Minimal Maintenance

## LENSES

To clean lenses begin by using a lens brush to remove dust and then pure alcohol, high-grade glass cleaner, or pure water on a cotton swab.

## WINDAGE / ELEVATION ADJUSTMENTS

These adjustments are permanently lubricated. There is no need to lubricate them. Keep the adjustment covers on, except when adjusting, to keep out dust and dirt. (It's worth noting that, unlike competitive brands, Leupold scopes are waterproof even without the covers in place.)

## SIDE FOCUS / ADJUSTABLE OBJECTIVE / POWER SELECTOR / EYEPIECE

These parts are permanently lubricated and there is no need to lubricate them. The eyepiece can be rotated as far as it will go in either direction. It will not detach from the scope as there is an internal lock ring. Do not loosen the screw in the power selector ring. Doing so will release the internal gas that keeps the scope fog free. Loosening the screw will also disconnect the pin that controls the internal operations, causing other problems that would require factory repairs.

## SCOPE EXTERIOR

No maintenance of any kind is required; simply wipe off any dirt or fingerprints that accumulate with a clean, dry cloth.

## TROUBLE SHOOTING TIPS

Before you ship a scope back to the factory for service or repair, please check the following items.

1. Check the mount. Make sure the scope is mounted securely to the rifle. Try, with bare hands only, to gently twist the scope in the rings or see if anything moves when you jiggle it. If there is any movement, retighten the mounting system according to mounting instructions.
2. Make sure the action of your rifle is properly bedded in the stock, and that all receiver screws are tight and have been tightened in the sequence recommended by the manufacturer. A loosely fitted stock can cause changes to the point-of-impact.
3. When test firing a rifle to check the point-of-impact relative to windage and elevation adjustments, be sure to fire from a solid bench with sandbags supporting the forearm and buttstock.
4. Be sure to use factory-loaded ammunition of the same bullet type, weight, and preferably, lot number. If one type of ammunition does not shoot well, try another brand or bullet weight.
5. Be certain that both the barrel and chamber are clean. Heavy factory grease or copper fouling can diminish the accuracy of the firearm.

## LEUPOLD PRODUCT SERVICE

If your Leupold Gold Ring scope fails to perform in any way, you may return it directly to the factory (or one of our international service centers) for service. We recommend contacting Leupold Technical Service at 1-800-Leupold (538-7653), and following these shipping instructions:

1. Remove the rings and any other accessories from the scope.
2. Record the serial number of the scope and keep it for your records.
3. Include a note with your name, address, telephone number, E-mail address, and a description of the problem.
4. Pack the scope in its original box (if you have it), as this is the safest shipping container. Wrap the package securely using filament strapping tape on the outside.
5. Ship the scope by parcel or mail service (insured, if possible) to one of the following addresses:

### IN THE UNITED STATES:

#### Parcel or Mail Service:

Leupold Product Service  
14400 NW Greenbrier Parkway  
Beaverton, OR 97006-5790 USA

### OUTSIDE THE UNITED STATES:

Canada: Korth Group Ltd., 64186- 393 Loop East,  
Okotoks, AB T1S 0L1, Canada

Leupold & Stevens, Inc. products, parts, components, technical data, and services are controlled for export and import, by the U.S. Department of State under the International Traffic in Arms Regulations (22 CFR, Parts 120-130) or the Department of Commerce under the Bureau of Industry and Security Export Administration Regulations, EAR (15 CFR, Parts 730-774). Diversion contrary to U.S. law prohibited.

Australia: Nioa, PO Box 191,  
Pinkenba, Qld 4008 Australia  
(for items originating from Australia,  
New Zealand, New Caledonia and  
Japan)

South Africa: Formalito, 1019 Pretorius Ave.  
Lyttelton Manor, 0157, South Africa

Our Product Service telephone numbers are:  
Local (503) 526-1400  
Toll-Free 1(800) LEUPOLD (538-7653)  
Fax (503) 352-7621

# The Best Consumer Protection in the Business

Leupold & Stevens, Inc. is an American, family owned, fifth generation company that has been designing, machining and assembling precision optical instruments for over 100 years. Leupold's success has been built on its commitment to your absolute satisfaction and its commitment to building the best optics for the shooting sports and for the law enforcement/military community. It is for these reasons that Leupold & Stevens, Inc. offers the Leupold Full Lifetime Guarantee.

If any Leupold product is found to have defects in materials or workmanship, Leupold & Stevens, Inc. will, at its option, repair or replace it. FREE. Even if you are not the original owner. No warranty card is required. No time limit applies. Warranty is void if damage results from unauthorized repair, alteration, or misuse.

The Leupold Guarantee in Germany and other countries where legally prohibited: Leupold is convinced of the high-quality and reliability of its products. This is why each U.S. customer is afforded a lifetime guarantee. For legal reasons, this guarantee must be restricted to 30 years in Germany and other countries where an unlimited lifetime guarantee is prohibited. Each owner, even those that acquired a Leupold product used, can make use of this 30 year guarantee.

## THE LEUPOLD ELECTRONIC WARRANTY

This warranty covers any defects in materials and workmanship in the electronic components of illuminated riflescopes/sights, flashlights, flashlight components, RX Rangefinders, GX Rangefinders, PinCaddie Rangefinder, RCX Cameras and Vendetta Archery Rangefinder. This warranty lasts for five years from the date of purchase. If, during that five-year period, these products are found to have defects in materials or workmanship, Leupold will repair, or if repair is not possible, replace the product, free of charge.

## LEUPOLD TACTICAL PRODUCTS WARRANTY

Warranties outlined above reflect the Leupold & Stevens, Inc. consumer product warranty policy. Military contracts may specify warranty policies that are different from these policies and supersede them. Warranties on Leupold Tactical optical products may vary depending on use and other factors.

## LEUPOLD MAKES MORE THAN SCOPES

See our complete line of rangefinders, mounting systems, binoculars, spotting scopes, accessories and Pro Gear at your nearest Leupold dealer.

For a free Leupold catalog, write to:  
Leupold & Stevens, Inc., P.O. Box 688, Beaverton, OR 97075,  
call (503) 526-1400 or (800) LEUPOLD (538-7653), or send us an E-mail through our Web site at [www.leupold.com](http://www.leupold.com).

*The Leupold package is made in part from recycled materials and is 100% recyclable. This includes the black or white polypropylene supports, which are made of an accepted recyclable material. Many Leupold owners keep their scope boxes. If you have no use for yours, we encourage you to dispose of it responsibly.*

LEUPOLD, GOLD RING, GOLDEN RING, MARK 4, the Golden Ring design, the circle-L reticle logo design, and various other marks are registered trademarks of Leupold & Stevens, Inc. All marks, including corporate logos and emblems, are subject to Leupold's rights and may not be used in connection with any product or service that is not Leupold's, or in any manner that disparages or discredits Leupold, or in a manner likely to cause confusion.

Certain other trademarks used in connection with Leupold products and services are the property of their respective owners, and are used with permission. BOONE AND CROCKETT CLUB and BOONE AND CROCKETT are registered trademarks of the Boone and Crockett Club. RMEF and ROCKY MOUNTAIN ELK

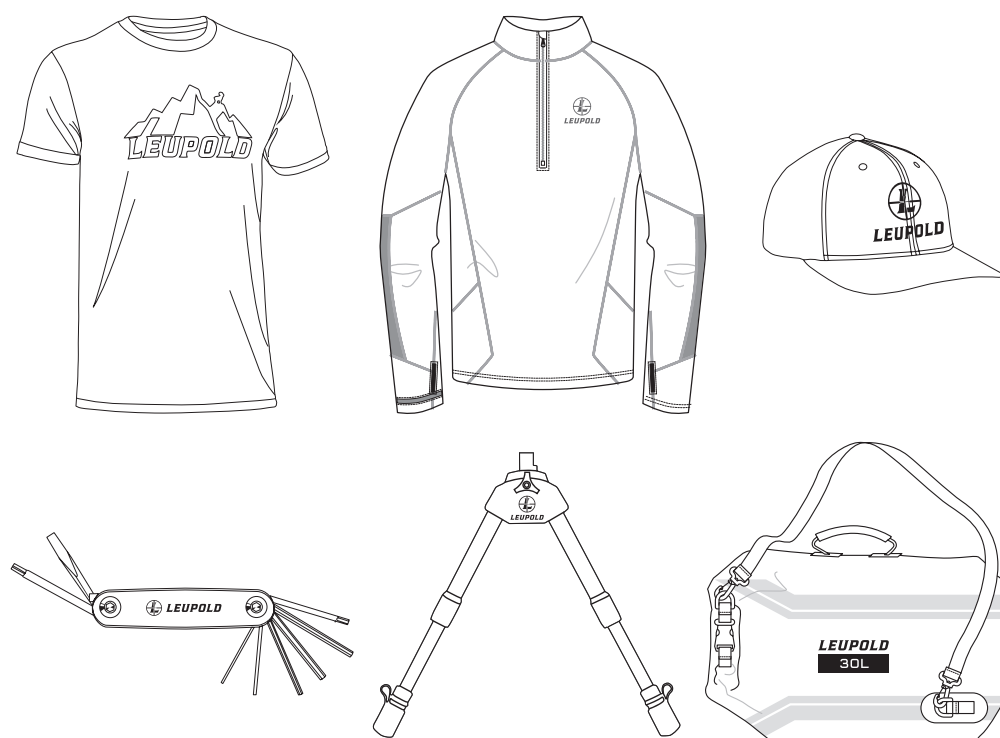
FOUNDATION are registered trademarks of the Rocky Mountain Elk Foundation. ADVANTAGE TIMBER and ADVANTAGE TIMBER HD are trademarks or registered trademarks of Jordan Outdoor Enterprises Ltd. MOSSY OAK BREAK-UP, MOSSY OAK BRUSH, MOSSY OAK OBSESSION, and MOSSY OAK TREESTAND are trademarks or registered trademarks of HAAS Outdoors, Inc. A.R.M.S. is a registered trademark of Atlantic Research Marketing Systems, Inc.

We reserve the right to make design and/or material modifications without prior notice.

Copyright © 2017 Leupold & Stevens, Inc. All rights reserved.

# Leupold Pro Gear

From outerwear to shooting accessories, Pro Gear is tested in the field and built to perform. You can see the full lineup at [Leupold.com](http://Leupold.com).



LEUPOLD & STEVENS INC.

P.O. BOX 688  
BEAVERTON, OR 97075-0688 U.S.A.  
1 (800) LEUPOLD (538-7653)

14400 NW GREENBRIER PARKWAY  
BEAVERTON, OR 97006-5790 U.S.A.  
(503) 526-1400



PART #172952 ARTWORK #172951B