

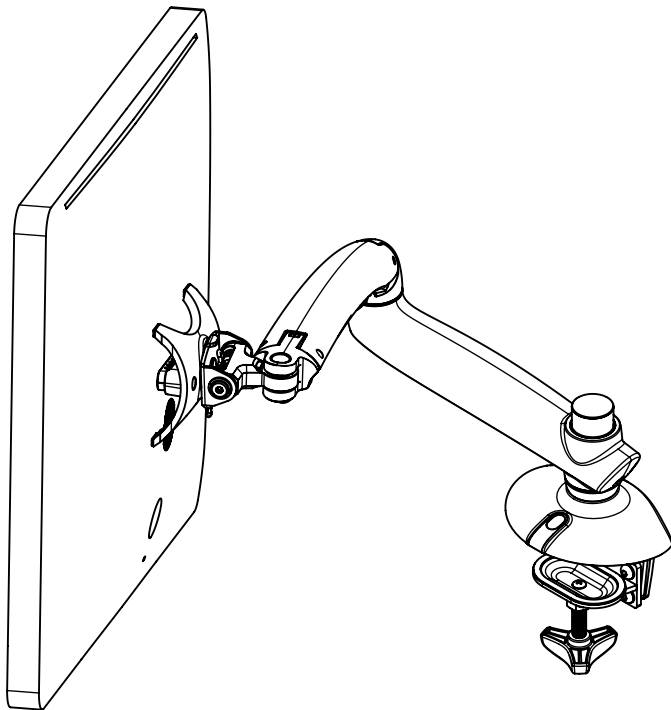
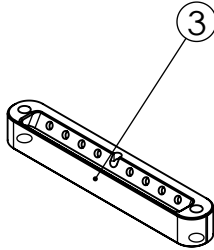
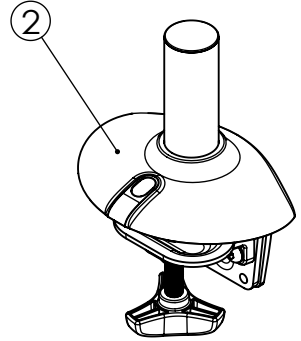
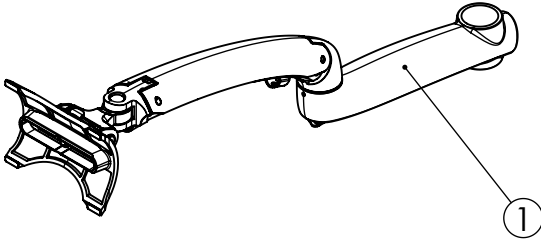


Desk Mount



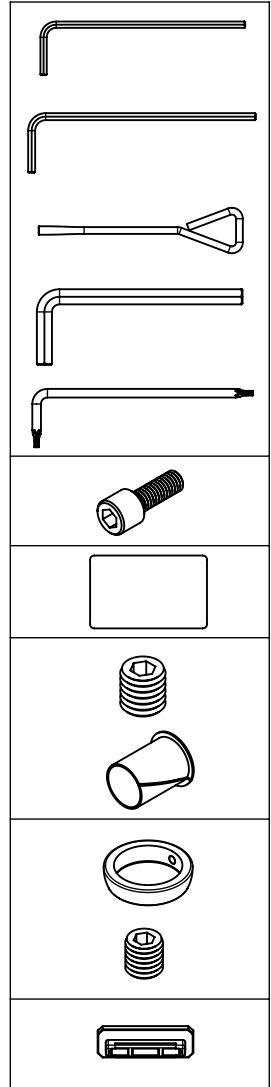
 www.cotytech.com
 888-891-9321



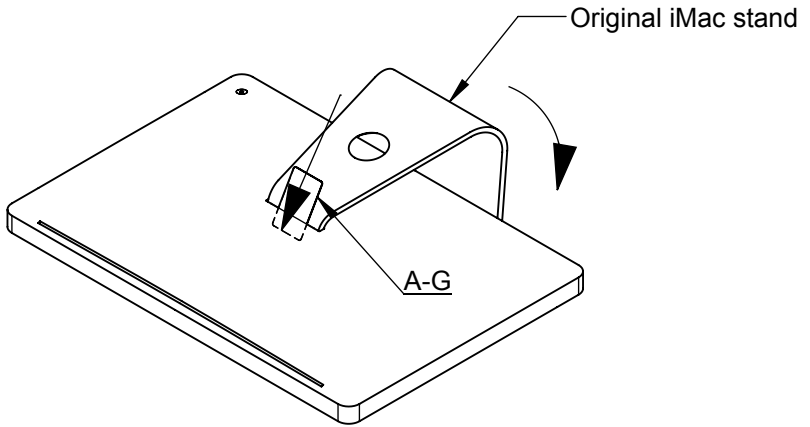


Part No.	Sub-part No.	Sub-part Qty.	Description	Part Qty.
N/A	1	1	Arm Set	1
	2	1	Desk Clamp Base	1
	3	1	Mounting Plate	1

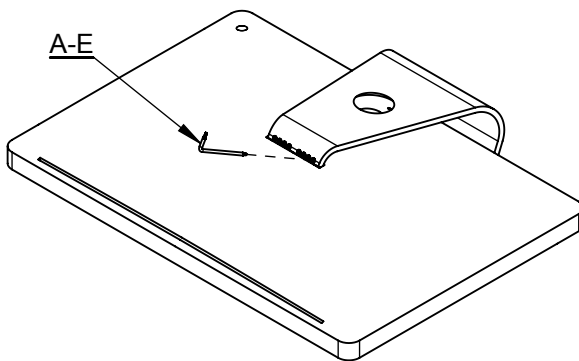
Part No.	Sub-part No.	Sub-part Qty.	Description	Part Qty.
A-1	A-A	1	2.5mm Allen Wrench	1
	A-B	1	3mm Allen Wrench	
	A-C	1	Adjustable Wrench	
	A-D	1	5mm Allen Wrench	
	A-E	1	Torx Tool	
A-2	A-F	2	Monitor Screw	1
A-3	A-G	1	Access Card	1
B-1	B-A	1	M6 x 5mm Socket Set Screw	1
	B-B	1	Adjustable Arm Sleeve	
B-2	B-C	1	Arm Support Block	1
	B-D	1	M5 x 5mm Socket Set Screw	
C-1	C-A	4	Plastic Pad	1



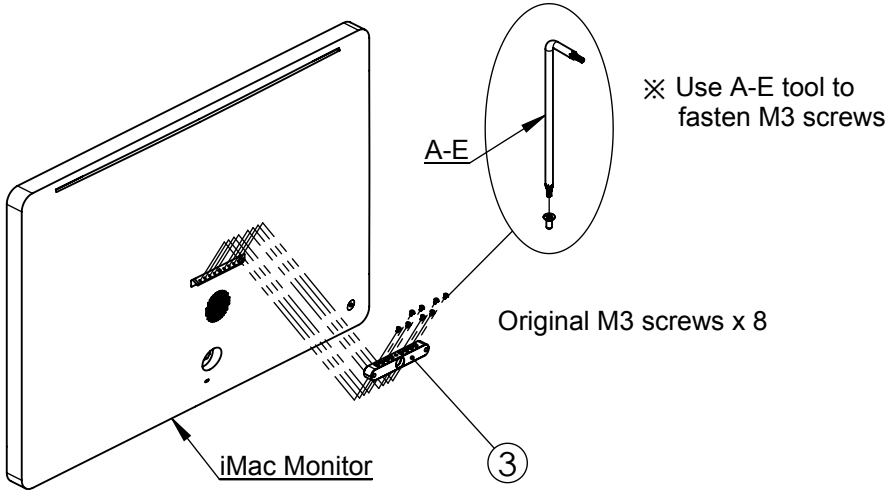
Step 1 : Lift the stand up to its highest point.
Insert A-G card at slight upward angle until you feel the latch.



Step 2 : With the card in the slot, lower the stand until it is as far down as it can be (you will see screws). Separate the stand from iMac monitor by using A-E tool, and set the original M3 screw 8 pcs aside carefully.

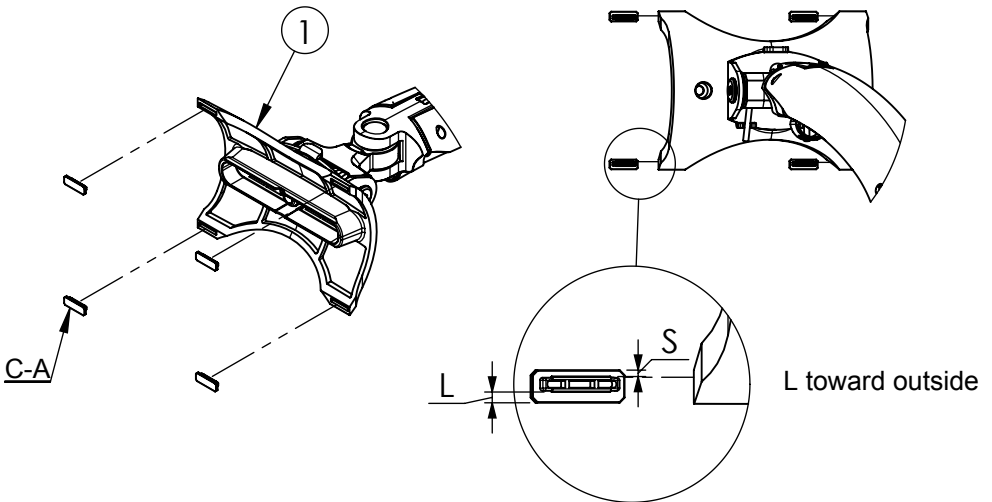


Step 3 : Fasten the mounting plate on the iMac monitor by using the M3 screws.

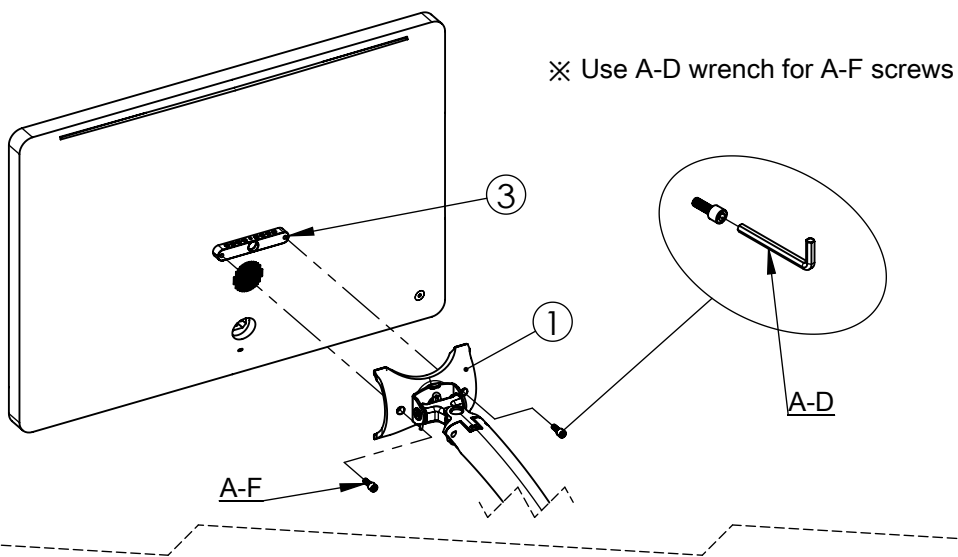


Step 4 : To install C-A into four holes at the corners of ① .

**Attention: Please do not try to adjust the bracket tilting angles until the display is put on. It needs weight at the front in order to adjust easily due to the spring mechanism.

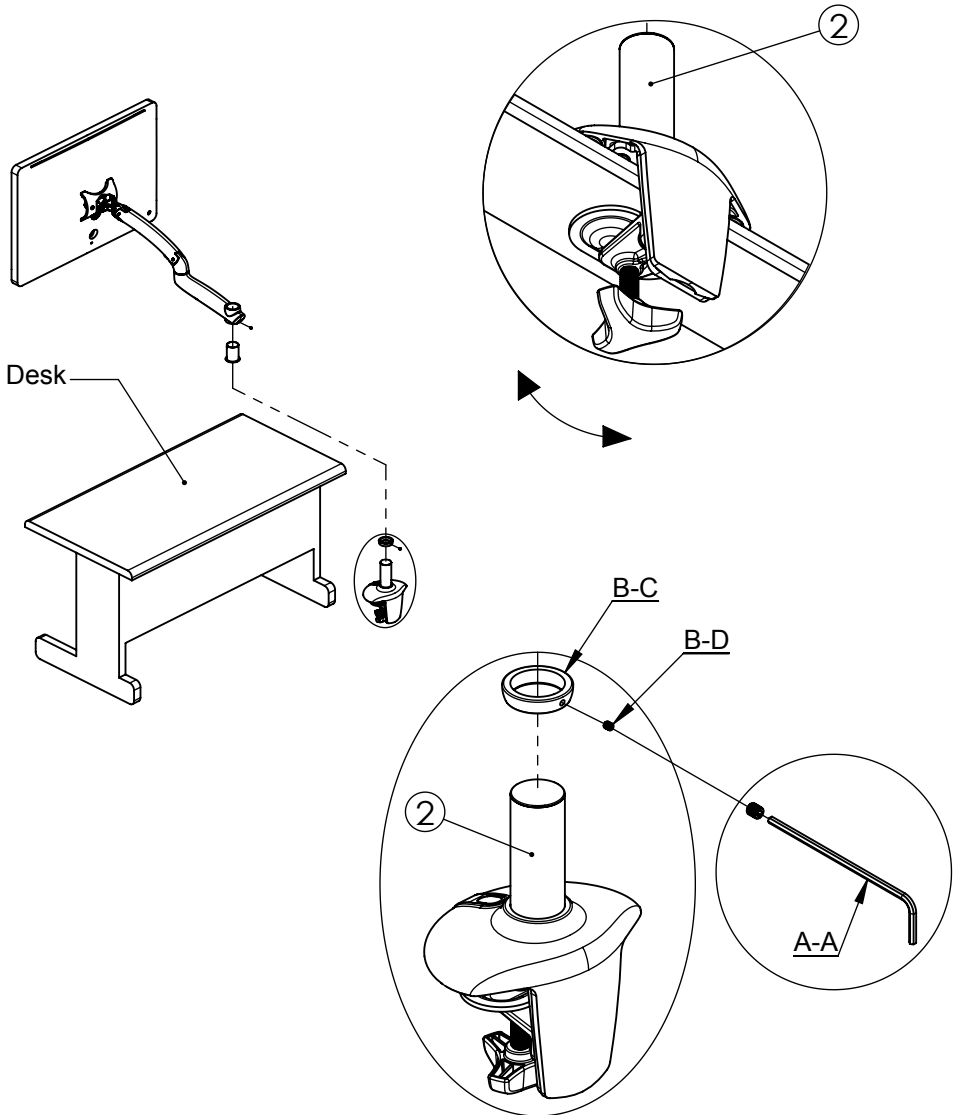


Step 5 : Fasten the arm set onto the mounting plate by using A-F screws.



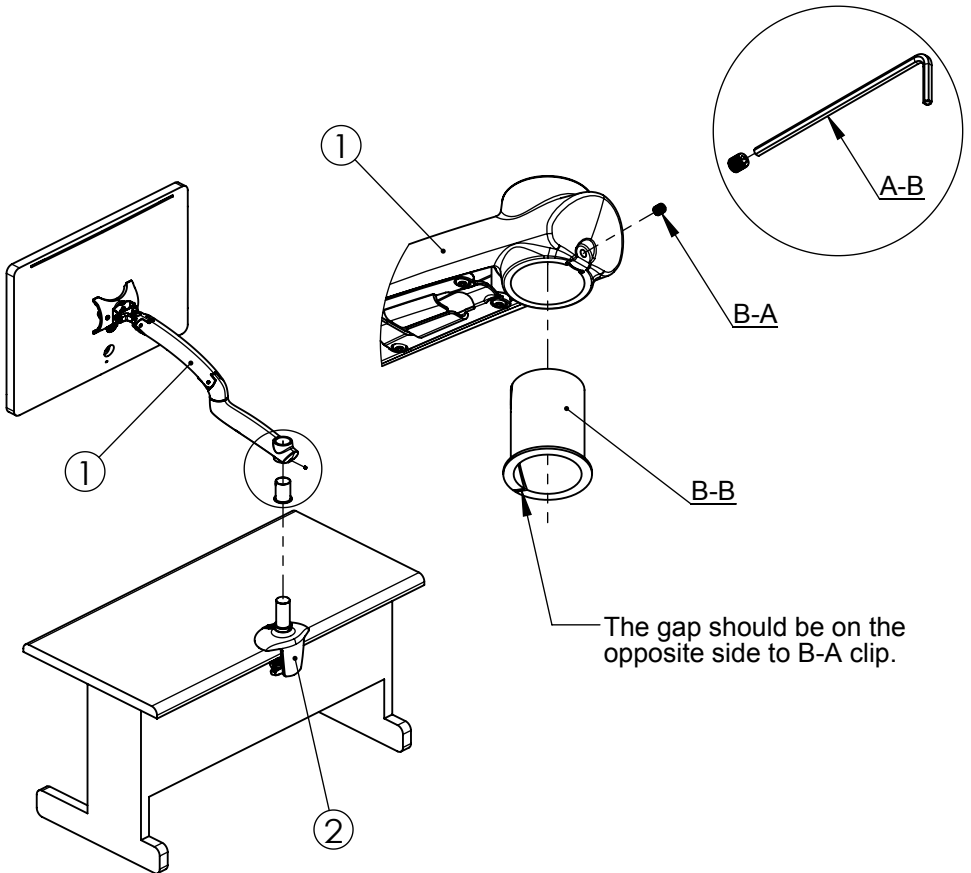
Step 6 : Fasten the desk clamp base on the edge of the desk.

Step 7 : Insert B-C block into the desk clamp base,
and fasten the block in the suitable position by B-D screw.

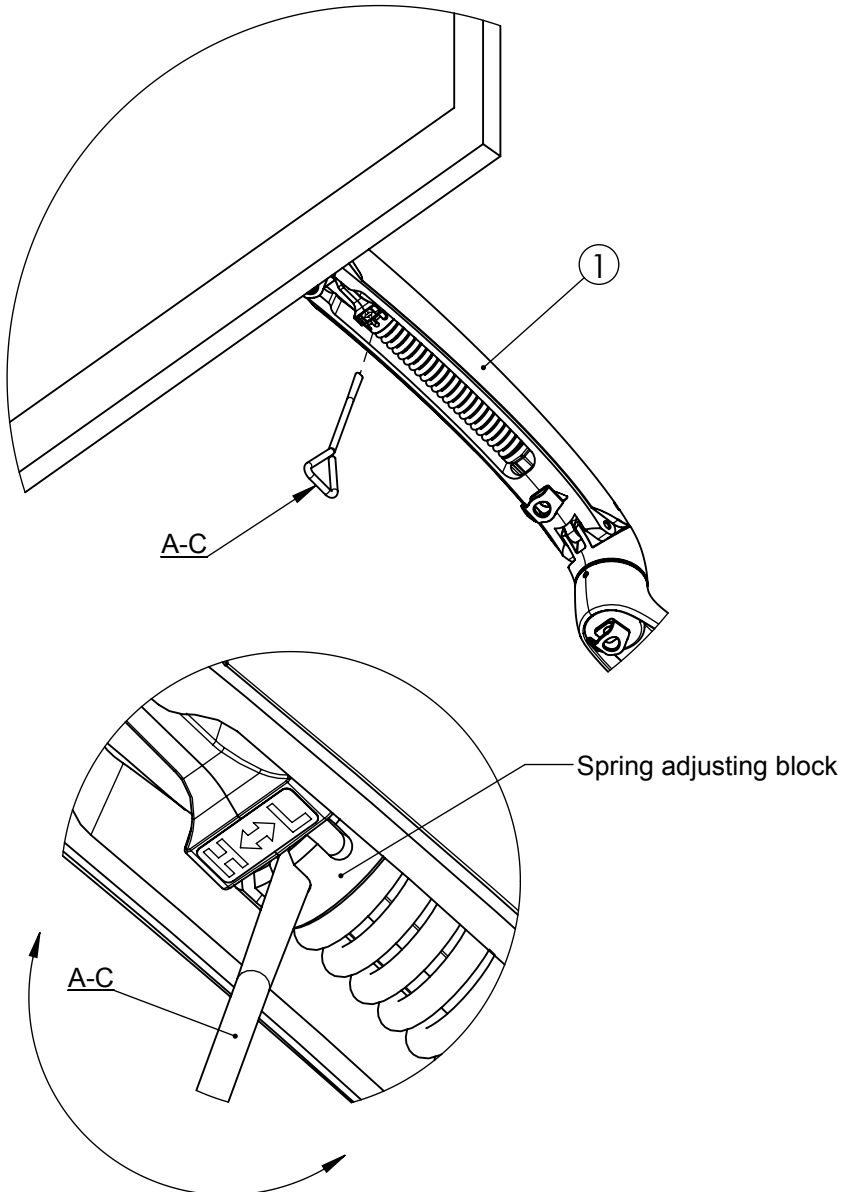


Step 8 : Install B-B sleeve into the hole of the arm connection set.
(Note the sleeve gap location)

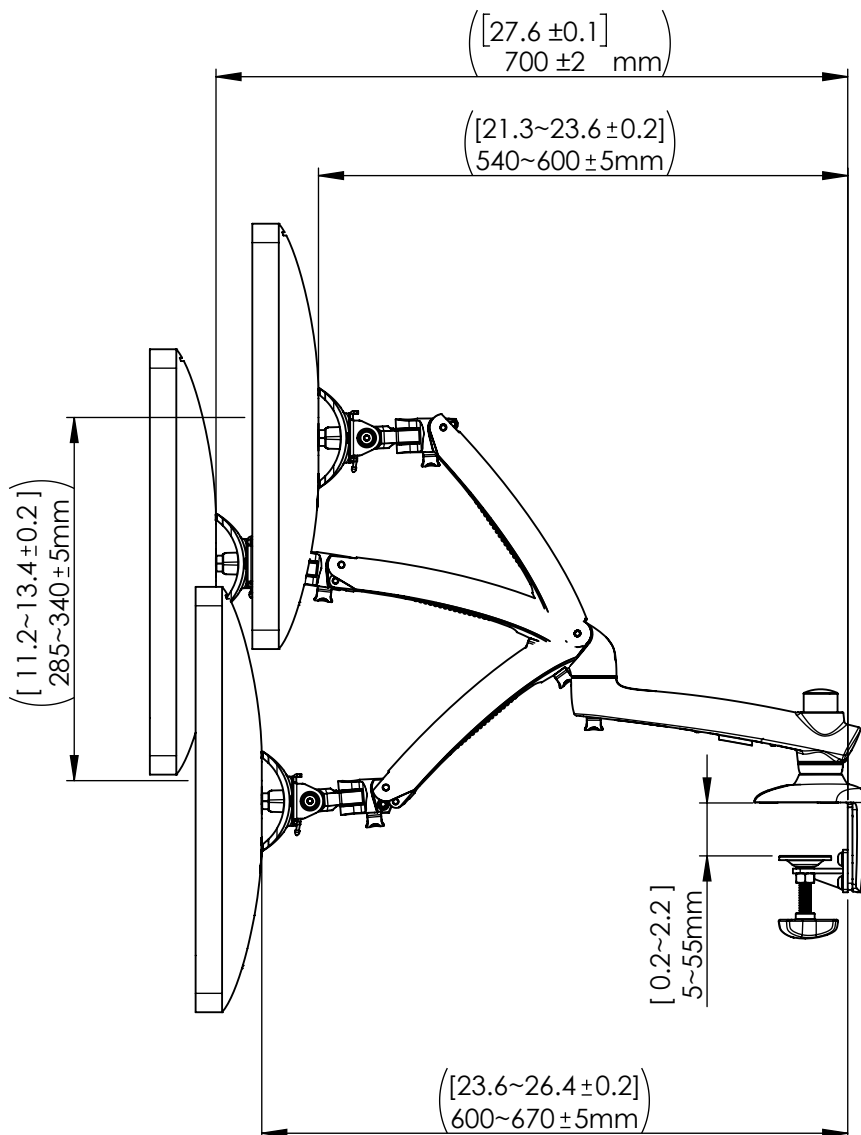
Step 9 : Inset the arm connection set into the desk clamp base,
and tighten the arm set by B-A screw.

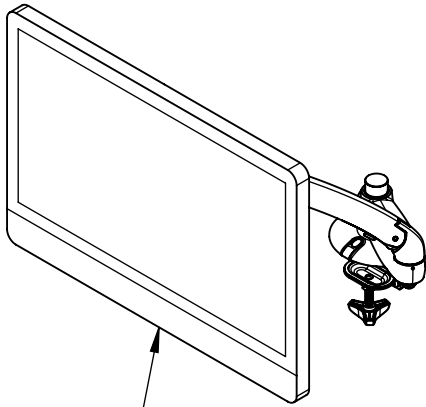


Remark : After the installation, please use A-C wrench to adjust the spring adjusting block based on the weight of the monitor.
“H” is provided for the heavy monitor and “L” is provided for the light monitor.

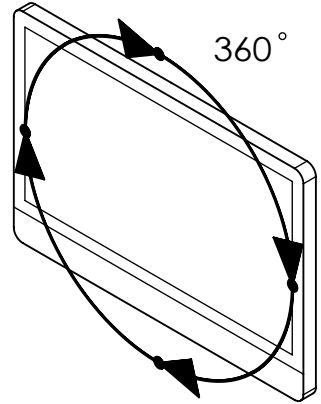


※ The distance of the arm stretch is depending on the spring tension adjusted for different weights of monitors.





Monitor Compatibility:
Thunderbolt Display.
Apple LED Cinema Display.
24-inch iMac (aluminum).
27-inch iMac.
8-14kg



※ Below angles are estimated for general monitors.
Actual angles would depend on the monitor in use.

