



Important Safeguards

- ⚠ WARNING:** A damaged or flawed wine bottle can break when pressurized with the Coravin System. To prevent the risk of lacerations from broken glass, always use a Coravin wine bottle sleeve.
 - NOTE:** Never use the Coravin System on a visibly damaged or flawed bottle even with a Coravin wine bottle sleeve.
 - ⚠ WARNING:** Use only official Coravin Capsules. Capsules are under high pressure, reuse of any part of the capsule or the use of non-Coravin capsules may result in serious injury to the user or others nearby.
 - ⚠ WARNING:** Contains gas under pressure, may explode if heated. Store in a well-ventilated place, below 50°C/122°F and out of direct sunlight. Only puncture Coravin Capsules using the Coravin device. Do not discharge towards face.
 -  Argon, 6.5g (20.7ml)
CAS 7440-37-1
 -  Needle and Needle Clearing Tool are sharp, use caution when handling.
- Keep out of reach of children.

Coravin™ 1000 System

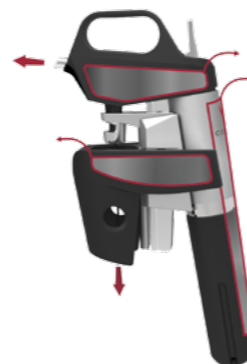


* Order your Coravin™ Capsules at coravin.com.

Unpacking



Remove and discard protective plastic, yellow spout and needle covers.



Use & Care

SAVE THESE INSTRUCTIONS

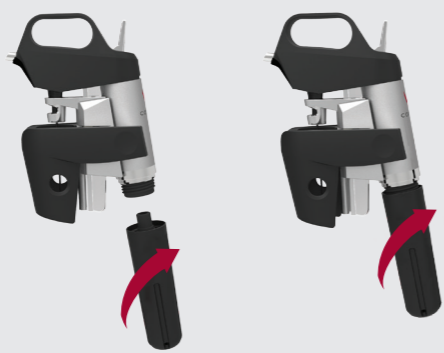
1. Read all instructions before using.
2. Use only as directed. Use for any other purpose voids warranty and may cause damage.
3. DO NOT USE the Coravin device on sparkling wine, champagne, metal screw caps or synthetic closures.
4. Do not submerge your Coravin System in any liquid.
5. Rinse with tap water and clean with a damp cloth.
6. Do not attempt to repair. Contact Customer Service.
7. See more information at coravin.com.

DISCLAIMER: There are many factors impacting the quality of a wine. When using the Coravin System, it is important to use the device as intended and to properly care for the device after each use. CORAVIN CANNOT GUARANTY THE QUALITY OF ANY WINE and will not be responsible for damage to or loss of any wine.

1. Inserting Capsule

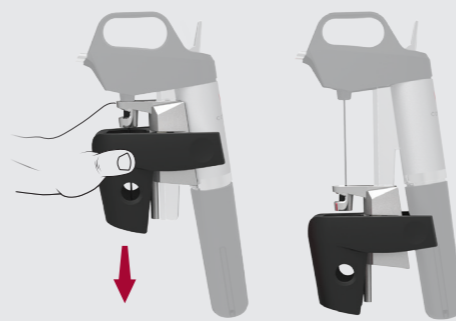


TWIST off capsule cup
INSERT Coravin™ Capsule



TWIST capsule cup on **quickly**
and **tightly**
TIGHT PLUS A HALF TURN

NOTE: Removing the capsule cup once the Coravin™ Capsule has been inserted will result in the quick release of gas.



SLIDE clamp down

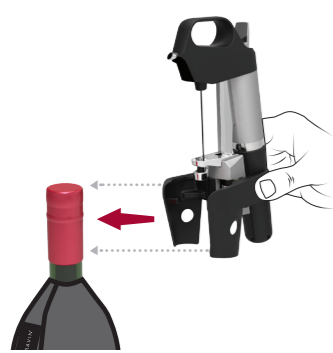
WARNING: A damaged or flawed wine bottle can break when pressurized with the Coravin System. To prevent the risk of lacerations from broken glass, always use a Coravin wine bottle sleeve.

NOTE: Never use the Coravin System on a visibly damaged or flawed bottle even with a Coravin wine bottle sleeve.



PLACE the bottle into a Coravin wine bottle sleeve.

3. Accessing Wine



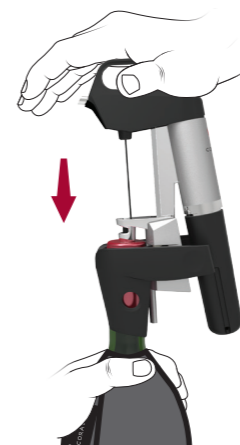
SQUEEZE clamp and
PLACE on bottle



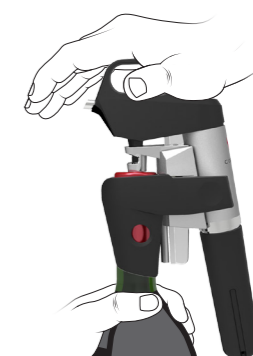
ENSURE needle guide is on
top of cork (foil)



PRESS trigger quickly to
purge of air

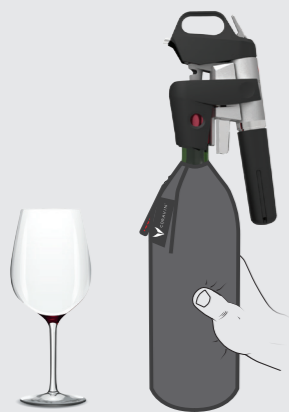


PRESS needle through
the cork



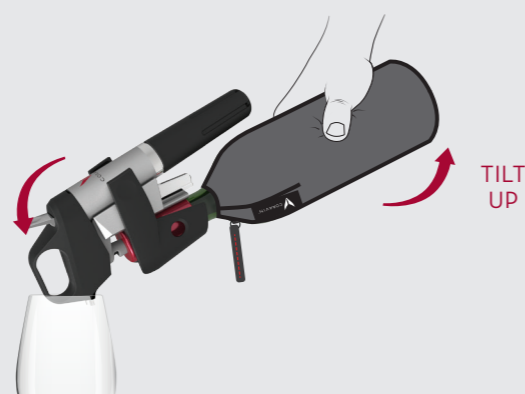
ENSURE needle is all the
way down

4. Pouring Wine



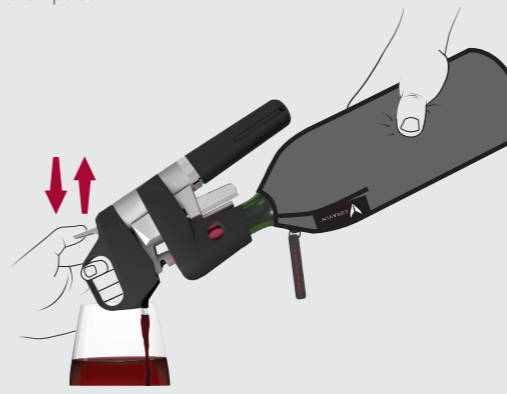
PICK UP wine bottle

NOTE: Ensure spout is
inside wine glass.



TILT bottle as shown

NOTE: Longer trigger
presses are needed as
the bottle empties.



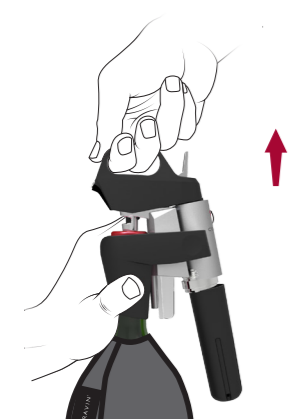
PRESS and **RELEASE** trigger to pour wine
REPEAT when wine slows or stops

NOTE: Coravin may
hiss, releasing excess
pressure from bottle.

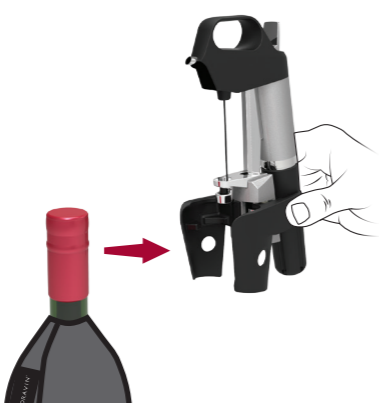


TILT bottle to upright
position to stop pouring

5. Removing Coravin



GRASP clamp firmly
and **PULL** up on handle
to remove needle

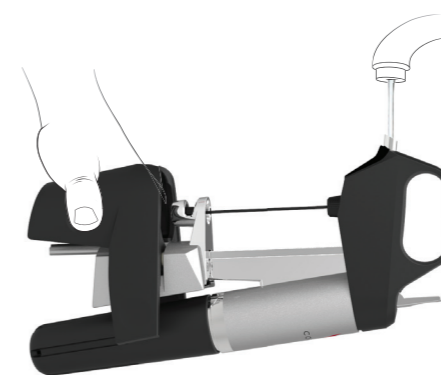


SQUEEZE clamp to remove
from the bottle
REMOVE wine bottle sleeve



PLACE on stand and
PRESS trigger quickly to
clear excess wine

6. Cleaning Coravin



RINSE spout under warm water
DRY with towel
PLACE on stand
PRESS trigger quickly to clear excess water



QUESTIONS?

Please view our instructional
videos on coravin.com/support
or contact Customer Service
at CSR@coravin.com or
1-855-692-6728.