



Setting up the Linksys CG7500 using the Quick Start Setup Wizard

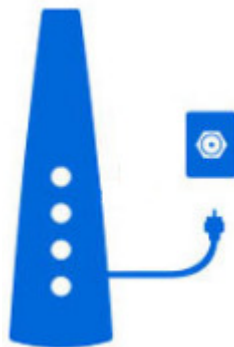
The built-in browser based Setup Wizard of the **Linksys CG7500 AC1900 Wi-Fi Cable Modem Router** guides customers through provisioning and customizing the router settings. This article will guide you through setting up the modem router using the Setup Wizard.

Before you begin, have the following information ready:

- **Account number** of your broadband subscription
- **Phone number** linked with your Account
- **Serial Number & MAC address** of the modem router (located on the product label at the bottom of the device)

Step 1:

Connect the coaxial cable from the cable port of your modem router to the wall jack.



Step 2:

Plug the modem router's power adapter to the power source to turn it ON.



Step 3:

Connect your computer to the **default** Wi-Fi network of the modem router. The default Wi-Fi settings are found on the label located at the bottom of the device.



NOTE: Alternatively, you can also connect a computer to the modem router using the supplied ethernet cable.

Step 4:

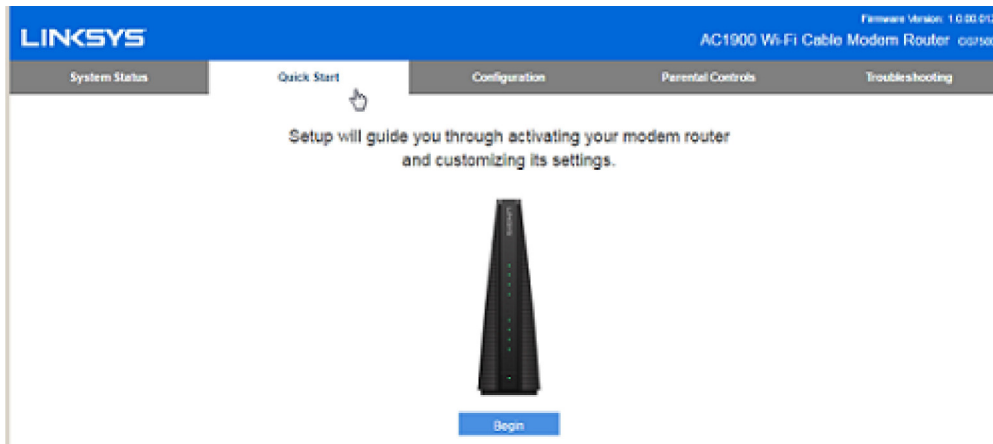
Launch a supported browser and enter “http://192.168.1.1” in the Address bar and then press **[ENTER]**.

Step 5:

When you land on the **Quick Start** tab, click **Begin**.

NOTE: You will NOT be able to navigate to other tabs until you click Begin. If you need to bypass the Setup Wizard, you will be given the option on the next step. If the **Begin** button is **greyed out**, this means the Setup Wizard was **launched previously**. If you need to launch the Setup Wizard again, you will need to reset the modem router by pressing and holding the Reset button (at the back panel) for **five** seconds. Wait for

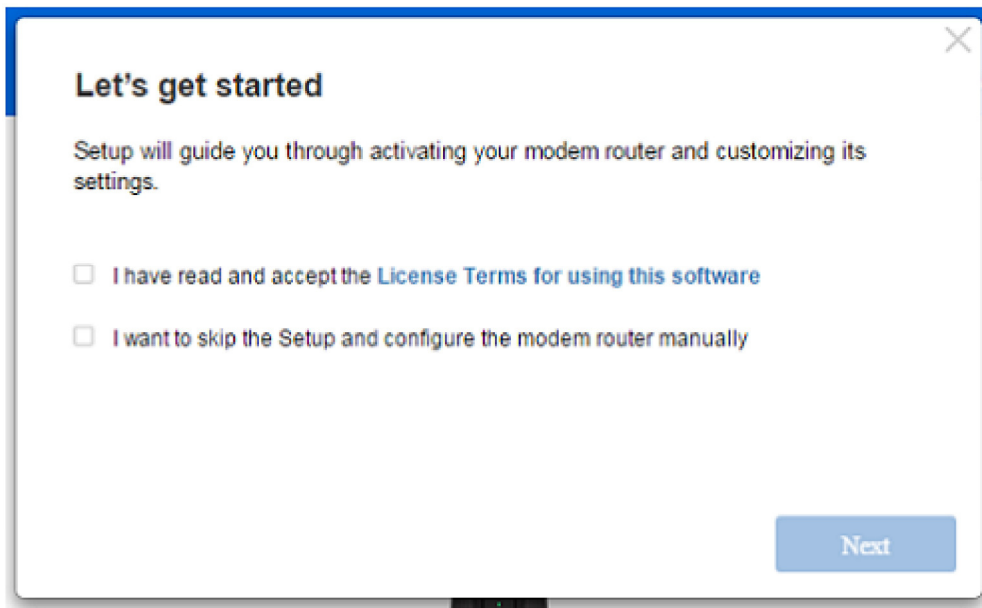
the power light to turn solid green. Then, you can begin with **Step 1**.



Step 6:

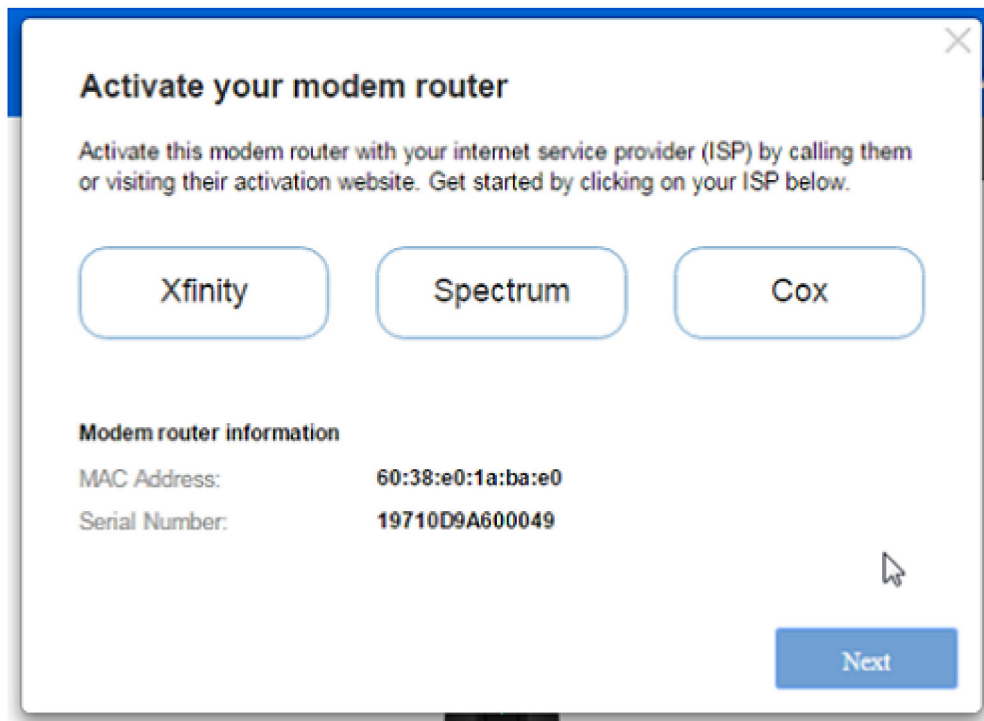
Let's get started. Check the first box and click **Next**.

NOTE: The skip option allows you to log in to the modem router to configure its local settings only. You would still need to contact your Internet Service Provider (ISP) to register your new modem router.



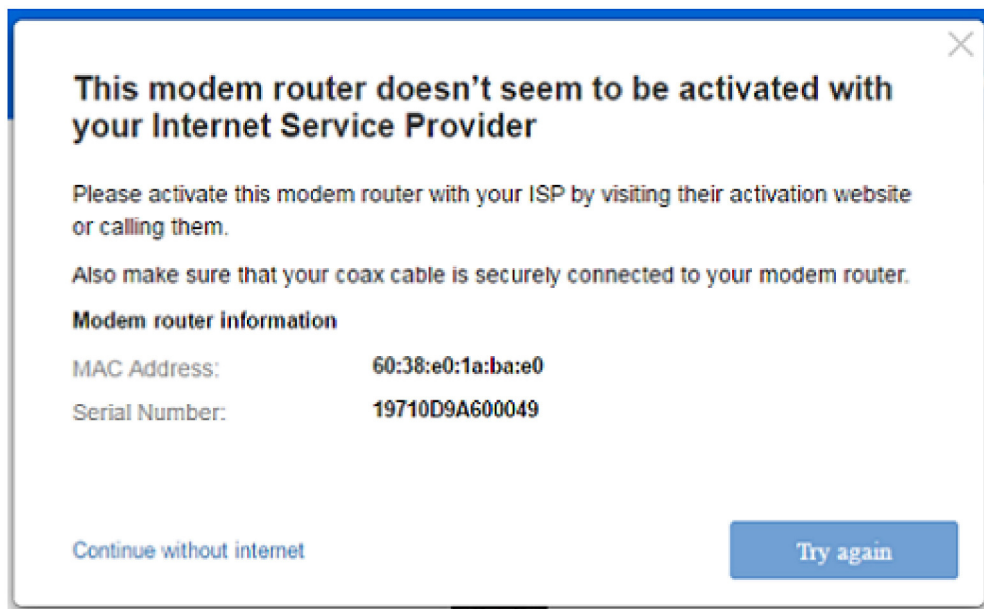
Step 7:

Activate the modem router with your ISP by calling them or visiting their activation website. Get started by clicking your ISP below then clicking **Next**. The activation process can take a few minutes.



QUICK TIPS:

- Your modem router may reboot several times during this process and activation can take up to five minutes.
- If the modem router has NOT been registered with the ISP, you may come across the following message. Call the ISP and register your new modem router.



NOTE: If you run into any problems with the provisioning process, contact your ISP first.

Step 8:

When the Linksys CG7500 is activated, the top four indicator lights located on the front panel will be solid and the Setup Wizard should continue. Now, you can personalize your Wi-Fi network then click **Next** to proceed.

✕

Personalize your Wi-Fi

Choose your Wi-Fi name and password.

Wi-Fi Name

Password

Step 9:

Change your Admin Password and click **Next**. It is highly recommended NOT to keep the default **admin** password.

✕


Set your admin password

Choose an admin password to control access your router settings.

Admin Password

Step 10:

Verify your custom settings on the **Summary** page and click **Save** then select **Done**.



Summary

Take note of settings for future use.

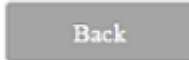

Wi-Fi Settings


Wi-Fi Name : **CG7500**

Password : **cg7500wlan**

Router Administration Password

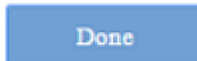
Password : **admin**



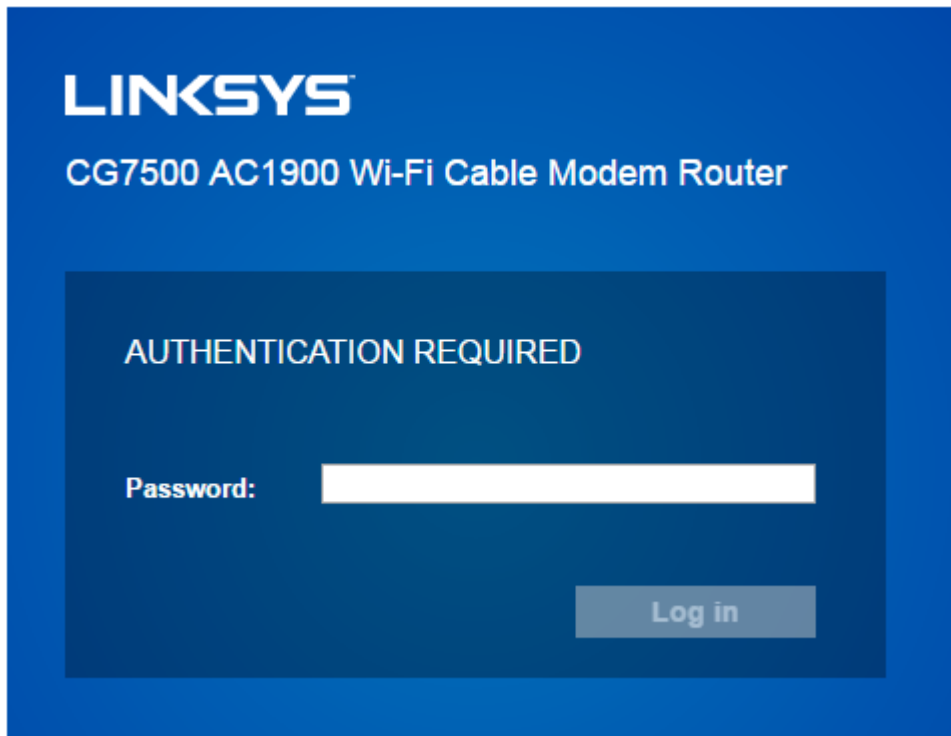
You're all finished

That's all there is to setup. Enjoy the internet!



Step 11:

You will be taken to the login screen. If you need to configure additional settings, just enter the new administrator Password you created during setup then click **Log in**.



You have now successfully set up your Linksys CG7500.

