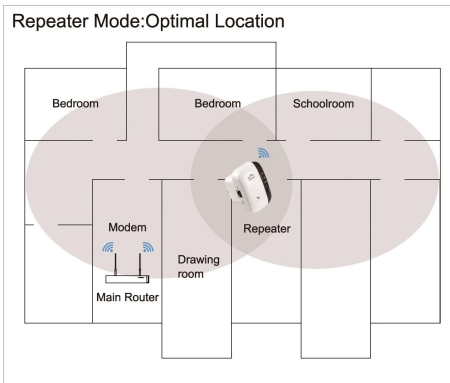
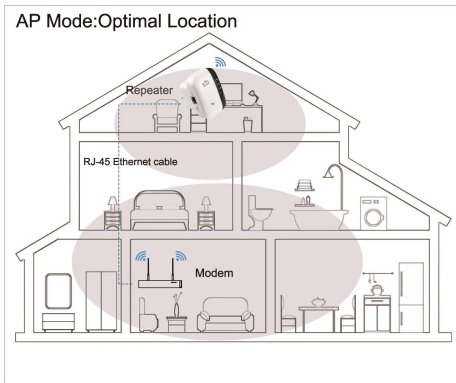
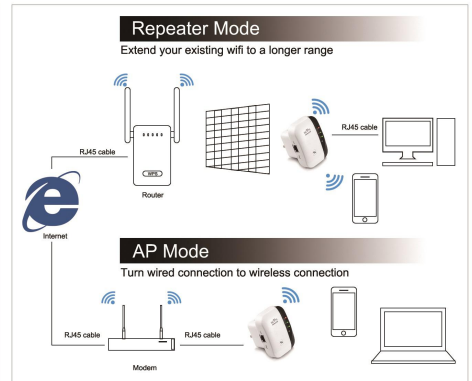
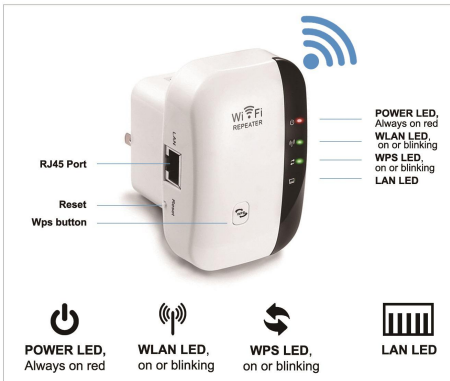


# User Manual

## Wireless-N WiFi Repeater



**FAQ:**

- Do I need to set it up on all my devices?  
A: No, just set it up one time and all devices are able to connect with it.
- How to reset it if I did wrong during setup or change a new router?  
A: Just reset it to factory mode by sticking to the reset button for 10-15s.
- Why it asks me to enter wifi password for the first time setup?  
A: It's not under setup mode. Please reset to factory mode.
- Does it matter if WiFi Repeater is an unsecured network before setting up?  
A: This wifi is only used for setup not for internet. Once you done the setup, it turns into a secure network.
- Why can not access the IP address?  
A: Ensure you connect with wifi name called "WiFi Repeater". Once done the setup, the IP cannot be opened unless reset.
- Why is there no connection after setting up?  
A: You typed a wrong password during setting up. Please reset it and re-configure it.
- How to make it work better?  
A: Plug it in a signal strong area and keep it away from microwave and electronic products.
- If it asks 8 digit PIN code when connect to the wifi repeater, please click Cancel.
- For more support, please contact us via Amazon Message or support@aigital.cn

**1** Plug it into socket, connect to open wifi "WiFi Repeater" on phone/laptop.

**2** Open browser, type "192.168.10.1" in address bar, click "Go".

**3** Log in. Username and password are "admin".

**Repeater Mode:** ☆☆☆☆☆

**4** Select "Repeater" Mode.

**5** Select your home wifi which you want to extend.

**6** Set a new SSID and type same wifi password as your home wifi, Apply.

**7** Close the page and connect to new wifi.

**AP Mode:** ☆☆☆☆☆

**4** Select "AP" mode.

**5** Set your wifi SSID and Passwords. Apply.

**6** Wait and finished the configuration.

**7** Connect this WiFi Repeater with your main router via Ethernet cable, Done and connect to new wifi.