



LASEREYE™

ROBOTIC VACUUM

USER MANUAL





www.rollibot.com

Customer Service: 1-844-585-6295

Dear LaserEye Owner,

Welcome to the new age of cleaning!

The LaserEye is an intelligent vacuum that uses the latest technology to improve your quality of life. We've designed LaserEye to be easy to use in your home, office, or just about anywhere else that can use a little bit of tidying. Its ultra-smart navigation and scheduling means it can easily clean any space, any time.

The LaserEye is designed for indoor use and can be used to clean floor surfaces such as: Hardwood, Linoleum, Tile and Low-to-medium pile carpets.

Our latest edition includes highly advanced tracking technology so your LaserEye can automatically find its Charging Station to charge. A remote control is also included for your convenience .

Thank you for being a part of the Rollibot family!

— The RolliBot Team

Table of Contents

Section 1. Safety Warnings & Guidelines	2
1.1 Safety Warnings.....	2
1.2 Disposal at End-of-Life.....	3
Section 2. Parts & Assembly	4
2.1 Box Contents.....	4
2.2 Components Overview.....	4
2.3 Remote Control Overview.....	5
Section 3. How The LaserEye Cleans	6
Section 4. Initial Setup	6
4.1 Charging Station Assembly & Setup.....	6
4.2 Film Removal.....	6
Section 5. Charging Instructions	7
Section 6. Usage Instructions	8
6.1 Basic Usage Instructions	8
6.2 Detailed Usage & Functions.....	8
Section 7. Maintenance Instructions	9
7.1 Maintaining the Dustbin.....	10
7.2 Maintaining the Agitator Brushes.....	12
7.3 Maintaining the Edge Brush	13
7.4 Maintaining the Wheels & Sensors.....	13
Section 8. Storage Instructions	13
Section 9. App Setup	14
Section 10. Product Specifications	14
Section 11. Troubleshooting	15
11.1 General Issues.....	15
11.2 Error Codes.....	15
Section 12. Warranty	16
12.1 Violation	16
12.2 Information	16

Section 1. Safety Warnings & Guidelines

This user manual will guide you through the functions and usage of your RolliBot LaserEye. It is important that you follow all instructions and regard all notes that appear throughout this manual. Consult this manual before you attempt to use your RolliBot LaserEye. If you have questions not answered by this manual or are in need of repair or non-routine service, contact RolliBot customer service at 1-844-585-6295. Before contacting customer service, please have your purchase information ready as this may be needed during the call.

1.1 Safety Warnings

When reading this manual, pay attention to the following icons:



Notes with this icon **MUST** be read, understood, and obeyed to prevent injury or damage etc.



Notes with this icon include relevant information.



Overall Usage

- *Always turn the LaserEye off before transporting or storing.*
- *Before using the LaserEye, remove all objects which may easily sustain or cause damage if bumped such as glass décor or pet food containers, etc.*
- *Clean the outside with a dry, non-abrasive cloth only. Do not spray water or liquids onto the LaserEye.*
- *Do not insert objects into the LaserEye or allow the LaserEye to clean up near any part of your body.*
- *Do not leave children or animals unsupervised around the LaserEye.*
- *Do not look directly into the laser sensors as the vacuum emits laser signals which may cause eye injury.*
- *Do not place the LaserEye near any source of significant heat or combustible materials.*
- *Do not use the LaserEye on any other surface besides flooring.*
- *Do not use the LaserEye on shag, high pile carpet, tassels, or fabric with loose edges.*
- *Do not use this device to clean up anything that is burning or smoking.*
- *Do not use this device to clean up bleach, paint, or other chemicals, or anything wet.*
- *Remove all objects which may easily cause damage if the objects are cleaned up by the LaserEye or become entangled in its brushes including but not limited to small metal objects like nails and screws, and cords/wires.*
- *LaserEye is for indoor use only*
- *LaserEye is not a toy. Do not sit or stand on any part of the device.*
- *Use a physical barrier to prevent access to balconies to ensure safe operation.*



Battery & Charging

- *Always keep the area around the Charging Station obstacle-free.*
- *Fully charge the battery to prevent over-discharge due to non-use before storing.*
- *Charge in a clean and dry indoor environment.*
- *Cover the LaserEye to protect it from dust. Do not store in a dusty environment as, with all electronic devices, dust may cause damage over time.*
- *Do not use an adapter with a damaged cord or plug.*
- *If storing for more than 1 month, remove the battery and store separately.*
- *If the battery is stored, place it back in the LaserEye and recharge it once a month.*
- *If the charging port or any part of the adapter is damp or obstructed, do not use it.*
- *If you misplace your adapter and/or Charging Station, visit www.rollibot.com for a replacement.*
- *It is recommended that you fully charge the battery before using the LaserEye for the first time. Batteries perform best after several full charge/discharge cycles.*
- *Please ensure the adapter is fully inserted and/or connected to the wall outlet before charging. Improper insertion may result in electric shock, short circuiting, smoke, or fire.*
- *Refer any non-routine battery maintenance to RolliBot.*
- *Regularly wipe the front charging contact of the charging base to ensure proper charging.*
- *LaserEye may not be used with any type of power converter.*
- *Store the LaserEye indoors at a dry and stable temperature. Do not store in an unheated garage, shed, or other location with extreme temperature fluctuations.*
- *Use only the battery included in the original packaging or received from RolliBot as a replacement.*
- *Use only the adapter included in the original packaging or received from RolliBot as a replacement.*

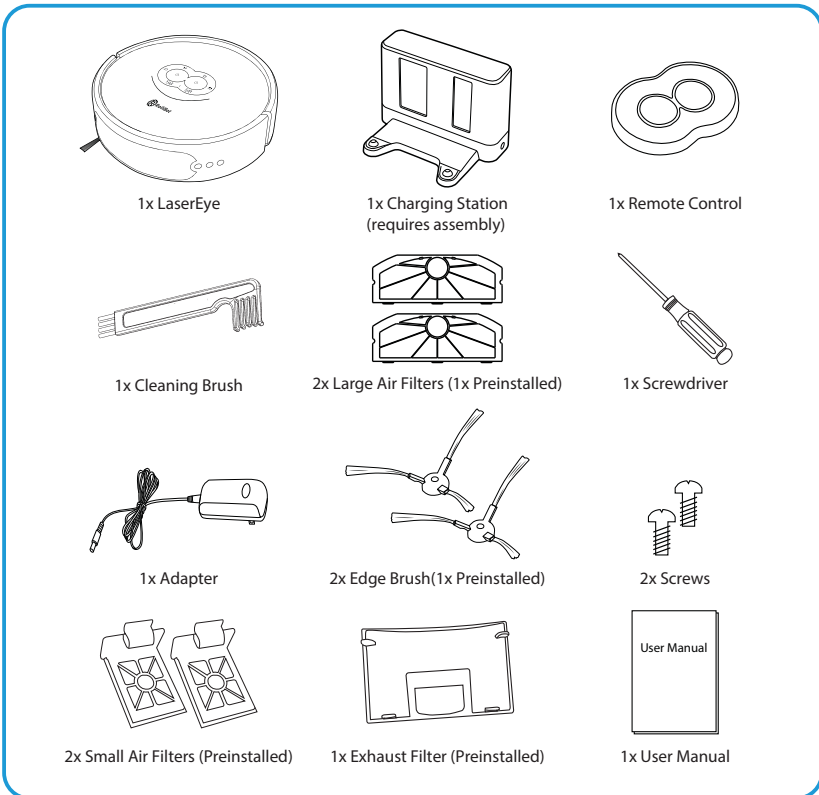
1.2 Disposal at End-of-Life

This product must not be disposed of by incineration, landfilling, or mixing with household trash. Improper disposal of the battery contained within this product may result in the battery heating up, rupturing, or igniting which may cause serious injury. The substances contained inside the battery present chemical risks to the environment. The recommended disposal for any RolliBot LaserEye at its end-of-life is to dispose of the entire unit at or through an e-Waste recycling center, program, or facility. Local regulations and laws pertaining to the recycling and disposal of lithium ion batteries and/or products containing them will vary according to country, state, and local governments. You must check laws and regulations corresponding to where you live in order to properly dispose of the battery and/or unit. It is the user's responsibility to dispose of their waste equipment properly with accordance with local regulations and laws.

For additional information about where you should drop off your batteries and electrical or electronic waste, please contact your local or regional waste-management office, your household waste disposal service, or your point-of-sale.

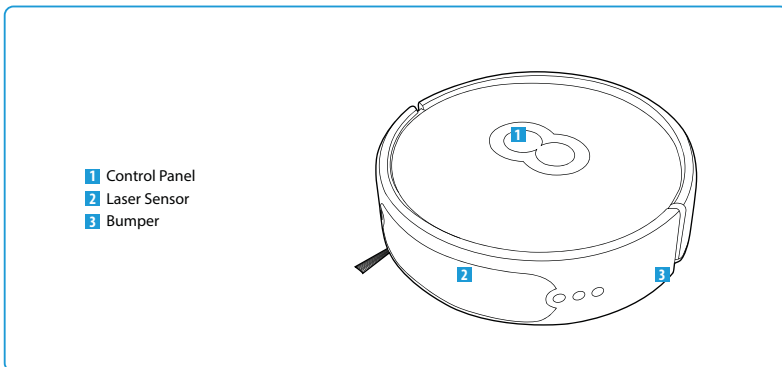
Section 2. Parts & Assembly

2.1 Box Contents

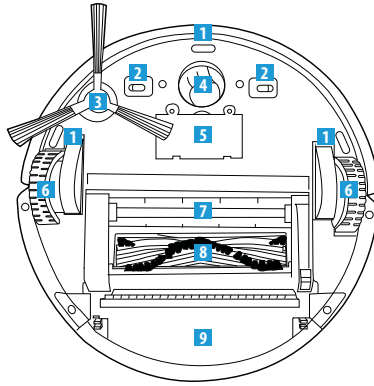


 *The LaserEye comes with the battery pack and some parts preinstalled.*

2.2 Components Overview

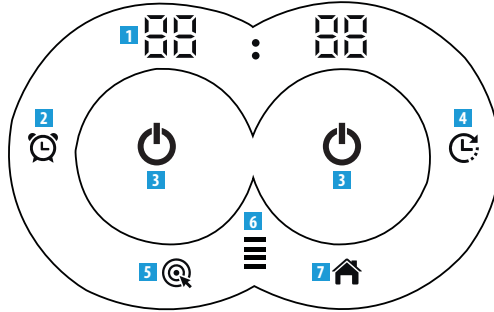


- 1 Cliff Sensors
- 2 Charging Contacts
- 3 Edge Brush
- 4 360° Front Wheel
- 5 Battery Compartment
- 6 Wheels
- 7 Rubber Agitator Brush
- 8 Bristle Agitator Brush
- 9 Dustbin




Control Panel Detail

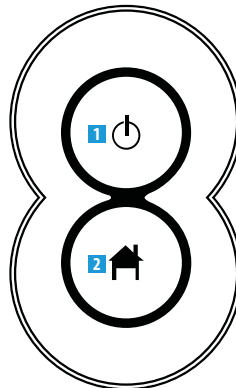
- 1 Current Time
- 2 Schedule Key
- 3 Start/Stop Keys
- 4 Clock Setting Key
- 5 Spot Cleaning Key
- 6 Battery Indicator
- 7 Home Key



2.3 Remote Control Overview

 The remote control uses a CR2025 3V battery. Remote battery not included.

- 1 Start/Stop Key
- 2 Home Key



Section 3. How The LaserEye Cleans

The LaserEye is a highly-advanced robotic vacuum that can be used for cleaning various surfaces including but not limited to low pile carpet (0.5in or 1.5cm), wood or laminate flooring, linoleum, and ceramic tile etc. in indoor environments. Every time the LaserEye is turned on and preparing to clean, it will rotate as it scans. During this scan, the LaserEye analyzes surroundings to determine the size of the area and map out a path covering every reachable part of the floor.

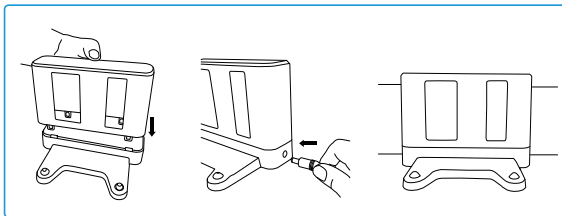
After this scan, the initial information is stored in the LaserEye's internal memory system and the vacuum will begin to move. While performing various cleaning cycles, the vacuum will often move in its signature U-shaped pattern. This unique pattern allows the LaserEye to span the length of space, make a U-turn, and cover the adjacent space.

The LaserEye's ultra-smart navigational elements allow it to clean up with logical movements in any space. The vacuum uses SLAM which is a software algorithm specially designed for simultaneous localization and mapping. In other words, active scanning with the ultrasonic laser sensor and multiple infrared sensors allows the LaserEye to continuously update its memory of the space around it while identifying its own location in said space. As the vacuum moves, its ultrasonic laser sensor and multiple infrared sensors help the LaserEye move around furniture and obstacles, avoid falls when working in bi-level spaces, and decide where to move next. These intelligent sensors can even detect objects just under one inch in size! The LaserEye performs best in safe, clutter-free environments. Rug tassels should be tucked in, power cords hidden, and breakable décor should be put away so that the vacuum can roll away while you enjoy smart, truly effortless cleaning.

Section 4. Initial Setup

The LaserEye comes with a preinstalled 2600mAh, lithium-ion rechargeable battery. The battery is charged when the LaserEye connects to its Charging Station.

4.1 Charging Station Assembly & Setup



Step 1. Insert the upper half of the Station down into the base.

Step 2. Plug the adapter into the wall then plug the other end into the Station.

Step 3. Place the Station down on a flat, level area on the floor with its back facing the wall.

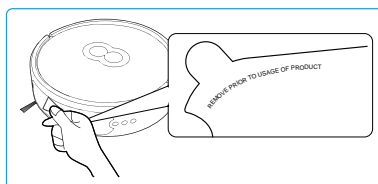
Step 4. Ensure the surrounding area is obstacle-free.



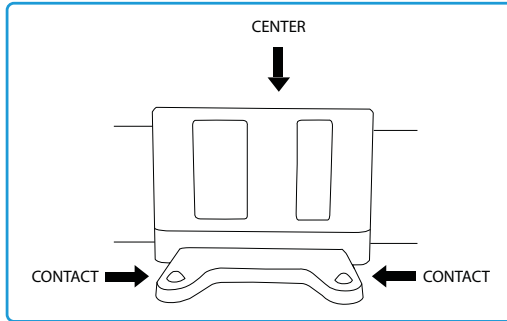
If the LaserEye encounters obstacles near its Station, it may stop and fail to charge properly.

4.2 Film Removal

Remove the protective film so that the laser at the front of the vacuum can work properly.



Section 5. Charging Instructions



Your LaserEye comes with advanced auto-charging technology. Generally, after each scheduled and auto cleaning cycle, the vacuum will automatically return to its Charging Station. In the event of other types of cycles, a command from the Control Panel, remote, or app may be needed to make the vacuum return to its Station.

Before using your vacuum for the first time, it must be charged. See the following images and instructions.

Step 1. Plug the adapter into the wall and the Charging Station.

Step 2. Click the Power Switch to turn the vacuum on and wait 20 seconds.

Step 3. Place the LaserEye on the floor and slowly push it towards the Station's center until the contacts on the underside of the vacuum connect with the base.

Step 4. Allow up to 3~4 hours for charging. If charging while on, the vacuum's Battery Indicator will blink.

Step 5. When the LaserEye is fully charged, the Battery Indicator will stop blinking. Turn off the LaserEye if it will not be used immediately.



- *Charging time is approximately 3~4 hours. Charging longer may affect battery life.*
- *Always keep the area around the Charging Station obstacle-free.*
- *Batteries perform best after several full charge/discharge cycles.*
- *If the LaserEye doesn't charge, check that the adapter is connected securely.*
- *If you misplace your adapter and/or Charging Station, visit www.rollibot.com for a replacement.*



- *Before storing, fully charge the LaserEye to prevent battery over-discharge due to non-use.*
- *Charge according to these instructions, otherwise the battery may sustain damage.*
- *Charge indoors only in a clean and dry environment.*
- *Do not use an adapter with a damaged cord or plug.*
- *If the charging port or any part of the adapter is damp or obstructed, do not use it.*
- *Please ensure the adapter is fully inserted and/or connected to the wall outlet before charging. Improper insertion may result in electric shock, short circuiting, smoke, or fire.*
- *LaserEye may not be used with any type of power converter.*
- *Use only the adapter included in the original packaging or received from RolliBot.*

Section 6. Usage Instructions

6.1 Basic Usage Instructions

Before using your vacuum for the first time, ensure it is fully charged, all parts are installed, and your cleaning environment is free of obstacles such as power cords, pet food containers, and loose fabrics.

As summarized below, different functions may be selected by pressing Control Panel or the remote keys. For more in-depth Control Panel and remote instructions, see the following section.

Power Switch: Click the Power Switch to turn the vacuum on then wait 20 seconds. The Control Panel will light up as the vacuum enters standby mode and awaits input. Clicking the switch again will turn the vacuum off.

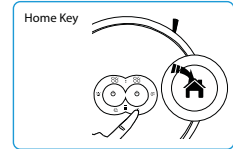
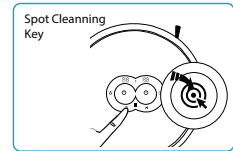
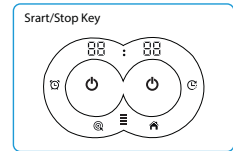
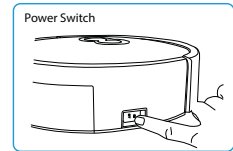
Start/Stop Key: When the vacuum is in standby mode, touch the Start/Stop Key to start an auto cleaning cycle. Touch the Start/Stop Key again to stop the cleaning cycle and activate standby mode. Note, the remote and app also have this key.

Spot Cleaning Key: When the vacuum is in standby mode, touch the Spot Key to start a spot cleaning cycle. Touch the Start/Stop Key to Start/Stop the cleaning cycle.

Home Key: When the vacuum is in standby mode, touch the Home Key to prompt the vacuum to return to its Charging Station. Touch the Start/Stop Key to stop it. Note, the remote and app also have this key.

The LaserEye will automatically stop any cleaning cycle and return to its Charging Station if it senses that its battery is low, once it is sufficiently charged, the LaserEye will resume cleaning. After it is finished cleaning and has returned to it's station, turn it off.

Turn it off and leave it near its Charging Station or store as desired. For storage instructions, see Section 8.



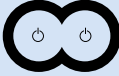




- Clean all of the following after every 3-4 uses: Edge and Agitator brushes, Small and Large filters.
- Inspect the wheels and bottom of the vacuum regularly.
- The maximum working time for the LaserEye is approximately 120 minutes.

6.2 Detailed Usage & Functions

Different functions may be selected by pressing on the Control Panel keys or the remote. See below for in-depth details on the LaserEye's functions.



- When setting the clock and cleaning schedule, the LaserEye uses 24-hour time for precise timing.
- After approximately 3 minutes of non-use, the Control Panel will turn off to conserve battery power. Press any key to turn it on again.
- Some of the features below are also accessible through the app. See Section 9 to set up the app.

 <p>Start/Stop Key (Control Panel, Remote & App)</p>	<ul style="list-style-type: none"> • Touch the Start/Stop Key in Standby Mode to start or stop an auto cleaning cycle. • Auto cleaning is ideal for any area. While auto cleaning, the vacuum uses lasers to analyze its surroundings and determine how best to clean them and adjusts its time accordingly. Auto cleaning time depends on the size of the room and other factors. The vacuum will continue to clean until it is almost out of power before returning to its Charging Station. • Touch the Start/Stop Key to Start/Stop any cleaning cycle. • When using the Clock or Schedule Functions, touch the Start/Stop Key to exit.
 <p>Clock Setting Key (Control Panel Only)</p>	<ul style="list-style-type: none"> • Touch the Clock Key to begin changing the time. • Touch the Spot Key multiple times to adjust the hour. • Touch the Home Key multiple times to adjust the minute. • Touch the Clock Key again to confirm the new time. • Touch the Start/Stop Key to exit and/or stop using this function.
 <p>Spot Cleaning Key (Control Panel Only)</p>	<ul style="list-style-type: none"> • Touch the Spot Key in Standby Mode to start a spot cleaning cycle. • Spot cleaning is ideal for small areas. While spot cleaning, the vacuum will slowly move back and forth to focus on one area. Spot cleaning takes about 1 minute. • When using the Clock Function, touch this key to adjust the hour.
 <p>Home Key (Control Panel, Remote & App)</p>	<ul style="list-style-type: none"> • Touch the Home key in any mode to prompt the vacuum to return to its Charging Station. • Touch the Home key again to stop the vacuum from returning to its Station. • When using the Scheduling Function, touch this key to adjust the minute.
 <p>Schedule Function (Control Panel & App)</p>	<ul style="list-style-type: none"> • Touch the Schedule Key to begin setting a cleaning schedule. • Touch the Spot Key multiple times to adjust the hour. • Touch the Home Key multiple times to adjust the minute. • Touch the Clock Key to save the cleaning schedule. • Touch the Start/Stop Key to exit and/or finish using this function. • At the scheduled time, the LaserEye will begin to clean automatically. • Scheduled cleaning is ideal for any space. At the scheduled time, the LaserEye will leave its Charging Station, clean, and then return to its Charging Station. Scheduled cleaning time depends on the size of the room and other factors.

Section 7. Maintenance Instructions

As with proper storage, proper maintenance will help improve your LaserEye's performance. Periodically, the LaserEye's dustbin will need to be emptied and its filters changed. It is also recommended to inspect the edge brush, wheels, and bottom of the vacuum and clean everything regularly. Please make sure your vacuum is completely powered off before performing any type of maintenance.

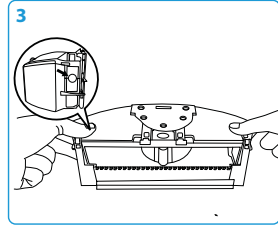
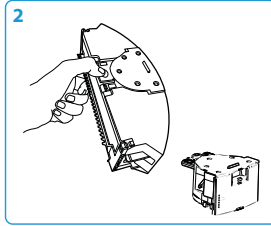
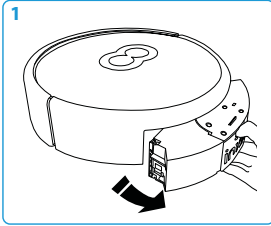


- *Clean the outside with dry, non-abrasive cloth only. Do not spray water or liquids onto the LaserEye.*
- *Do not insert objects into the LaserEye or allow the LaserEye to clean up near any part of your body.*
- *Do not use this device to pick up anything that is burning or smoking.*
- *Do not place the LaserEye near any source of significant heat or combustible materials.*
- *Do not perform any maintenance when the power is on or the battery is charging.*
- *When turning over the LaserEye, always place it on a level surface with padding underneath.*

7.1 Maintaining the Dustbin

Necessary dustbin maintenance includes emptying the dustbin itself and cleaning out the filters. It is recommended that you empty the dustbin after the first few cleaning cycles especially if the LaserEye was able to clean hard to reach areas. After this, clean out the dustbin after every 3-4 cleaning cycles. For dustbin and additional maintenance, see the images and instructions in the upcoming sections.

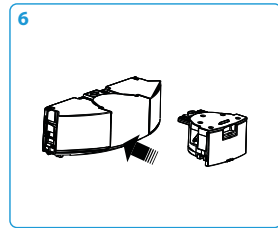
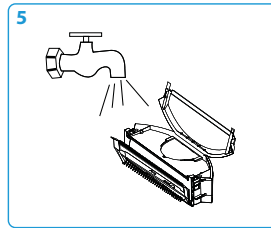
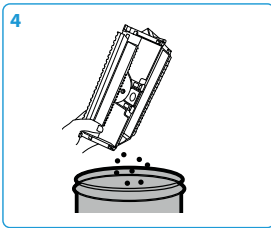
7.1.1 Removing & Cleaning the Dustbin



Step 1: Press the bin clip down and carefully pull the dustbin out to remove it.

Step 2: Press and hold the button down to release the motor. It should pop out.

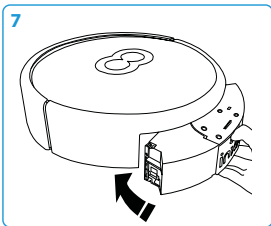
Step 3: Press the buttons on both sides of the dustbin to open the front then lift the front lid up.



Step 4: Empty the contents into a waste bin and use the cleaning brush to gently clear away any remaining debris. Then, close the front lid. It will click into place.

Step 5: The dustbin can be cleaned with water if desired. Before rinsing, all filters must be removed. See Section 7.1.2. Allow 24 hours time for the dustbin to dry.

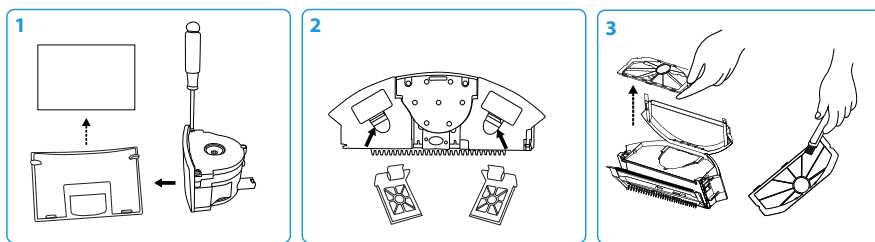
Step 6: After everything is completely clean and dry, reinstall the motor.



Step 7: Return the dustbin to the LaserEye, making sure it is fully inserted. The dustbin should be emptied and cleaned after every 3-4 cleaning cycles.

7.1.2 Removing & Cleaning the Filter

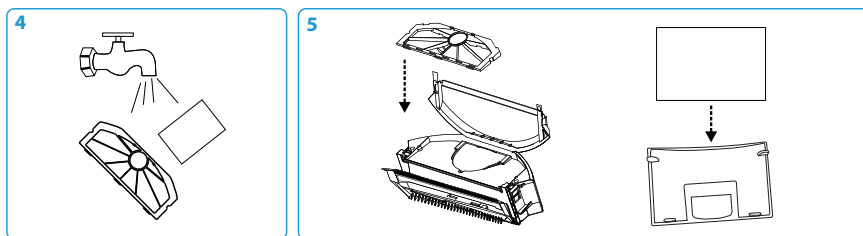
! Remove and clean the dustbin as instructed in the previous section, making sure the motor remains removed and the front lid remains open.



Step 1: Use the included screwdriver to remove the screws near the edge of the motor on the top and bottom. Next, pull the side of the motor to detach it and remove the exhaust filter.

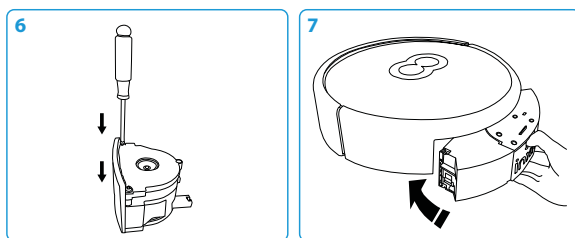
Step 2: Press the clips in to take out the small filters then use the cleaning brush to gently clear away any debris.

Step 3: Turn the dustbin over then press and pull the bottom lid open, then take out the large filter and use the cleaning brush to gently clear away any debris. Separate the large filter mesh from the rest of the filter.



Step 4: The large filter and the exhaust filter can be cleaned with water if desired. ONLY the large filter mesh and the exhaust filter can be rinsed. After rinsing, allow 24 hours time for the filters to dry.

Step 5: After everything is completely clean and dry, reinstall the large filter and the exhaust filter.



Step 6: Use the included screwdriver to fasten the screws and reattach the side to the motor.

Step 7: Close and/or reinstall all remaining parts of the dustbin then return it to the LaserEye, making sure it is fully inserted.



- If the dustbin is not emptied regularly, the LaserEye may not work properly.
- If rinsed, the large filter **MUST** be fully dried before reinstalling. If water enters the LaserEye, the vacuum may sustain serious internal damage.
- The exhaust filter should only be cleaned and/or rinsed as needed as excess maintenance may cause damage.
- After every 3-4 full cycles, the large filter should be brushed, cleaned and rinsed while the small filters may be brushed clean.

7.1.3 Replacing the Filter

The LaserEye comes with four preinstalled filters and an additional extra large filter for future use. To purchase additional filters, please visit our website at www.rollibot.com. Filters may be changed as needed.

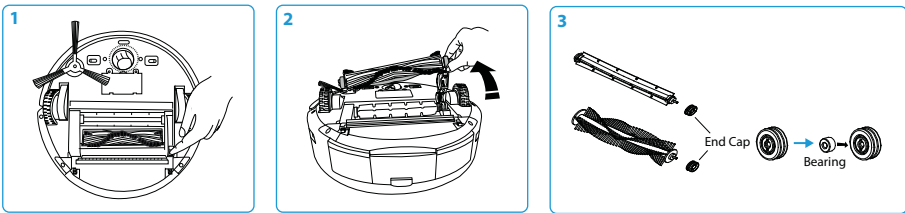
Step 1. Remove the large filter from the dustbin and throw it away.

Step 2. Place a new large filter in the dustbin.

Step 3. Push the dustbin back into the LaserEye.

7.2 Maintaining the Agitator Brushes

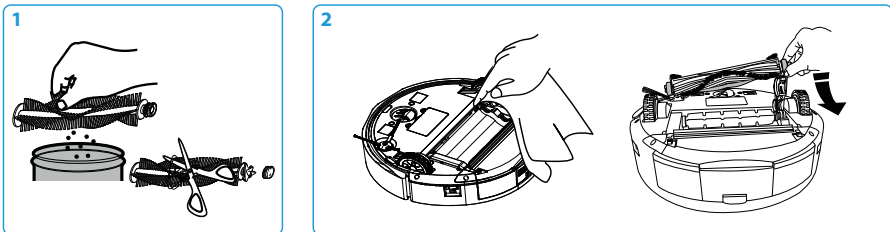
7.2.1 Removing the Agitator Brushes



Step 1: Locate the latch at the right side of the agitator brushes and push the latch's clip in slightly to open it and access the rubber and bristle agitator brushes.

Step 2: Holding up the latch, grasp and pull each brush sideways to remove.

Step 3: Remove the end caps from the end of each brush and set them aside. If the bearings come loose, simply reinsert them into the caps.



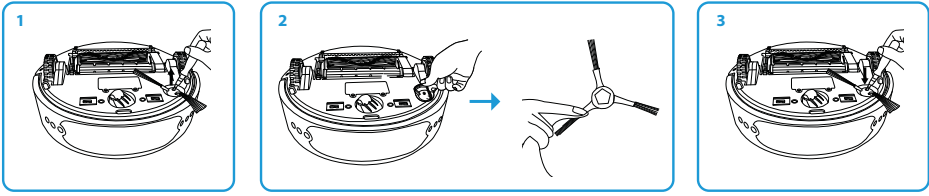
7.2.2 Cleaning the Agitator Brushes

Step 1: Hold each brush over a waste bin and shake off any dust. Pull or cut out any entangled debris. Taking care not to damage the bristles.

Step 2: Clean around the latch if needed. Place the end caps back on the brush ends, return them to their compartment, and close the latch. It will click into place.

7.3 Maintaining the Edge Brush

The LaserEye comes with two edge brushes. To purchase additional brushes, please visit our website at www.rollibot.com.

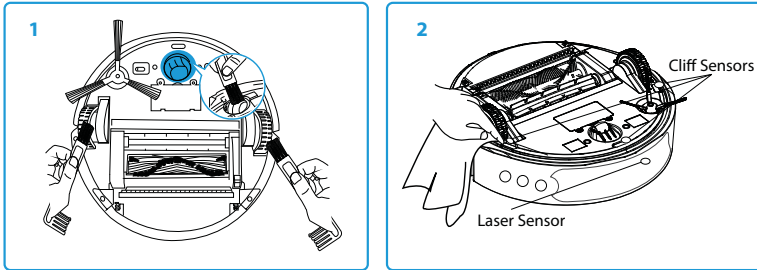


Step 1. Using the included screwdriver, remove the screw from the edge brush.

Step 2. Remove the brush and pull or cut out any entangled debris, taking care not to damage the bristles.

Step 3. Once the brush is clean, reinstall and tighten it with the screw and screwdriver.

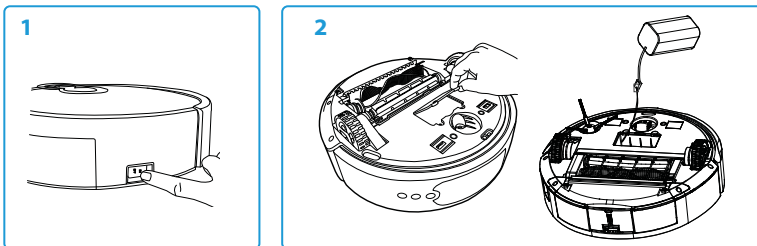
7.4 Maintaining the Wheels & Sensors



Step 1. Use the cleaning brush to clear away any debris. Carefully pull or cut out any entangled debris.

Step 2. Use dry, non-abrasive cloth to clean excess dust or debris from the laser and Cliff Sensors.

Section 8. Storage Instructions



Before storing your vacuum, select a dry, indoor environment and ensure the LaserEye is fully charged. Charge it if needed. Properly storing your LaserEye will help improve performance and battery life expectancy.

Step 1. Turn the LaserEye off.

Step 2. If the vacuum will not be used for a long period of time, remove the battery.



- Always turn the LaserEye off before transporting or storing.
- Before storing, fully charge the LaserEye to prevent battery over-discharge due to non-use.
- Cover the LaserEye to protect it from dust. Do not store in a dusty environment as, with all electronic devices, dust may cause damage over time.
- If storing for more than 1 month, remove the battery and store separately.
- Even if the battery is stored, place it back in the LaserEye and recharge it once a month.
- Store the LaserEye indoors at a dry and stable temperature. Do not store in an unheated garage, shed, or other location with extreme temperature fluctuations.

Section 9. App Setup

For your convenience, there is an app which may be used with the LaserEye. The app is compatible with most Android and iOS smartphones. The app can be used to set cleaning schedules, start or Stop cleaning cycles, and much more.

Step 1. Use your smartphone to search the GooglePlay or iOS App Store for the LaserEye application.

Step 2. Download and install the app according to your operating system.

Step 3. Turn on your LaserEye and open the app.

Step 4. Follow the in-app instructions to set up your LaserEye vacuum.

Step 5. After the setup up is complete, use your LaserEye as desired!



- Use the icons at the bottom of the app's main menu to access additional menus.
- Upon connecting to the app, the vacuum may sync its clock with your phone's clock.
- For optimal functionality, a stable wifi connection is ideal. If your home wifi signal is unstable or weak, try moving the LaserEye nearer to your router. If this proximity change does not resolve any issues, contact your internet service provider for signal troubleshooting.

Section 10. Product Specifications

Items	Parameters
Dimensions	13.25 x 13.25 x 3.75 in.
Input	100 - 240V~50/60Hz 0.6A
Output	18V 1A
Working Time	90-120 min.
Sound Level	≤ 65 dB
Charging Time	3-4 hours
Battery Type	Lithium-Ion
Battery Capacity	2600 mAh
Operating Temperature	-4 ° F to 122 ° F
Operating Humidity	≤ 80% RH
Dustbin Capacity	11.8 oz

Section 11. Troubleshooting

11.1 General Issues

Q: Why did the LaserEye stop working?

A (1): The LaserEye could not reach its Charging Station. If there are obstacles around the Charging Station, the LaserEye may have trouble reaching it and/or run out of battery power. Ensure the area around the Station is clear at all times.

A (2): The LaserEye finished a spot cleaning cycle. Use the remote or the keys on top of the LaserEye to stop it and/or change the type of cleaning performance as desired.

Q: Why isn't the schedule function working?

A: The schedule was not saved. After choosing a schedule, be sure to save it. See Section 6.2.

Q: Why isn't the remote control working?

A (1): It's likely too far from the vacuum. Move within a yard or two and attempt to use the remote again.

A (2): The LaserEye or remote's batteries may be low. Recharge the vacuum or replace the remote batteries.

A (3): The LaserEye is not on. Use the Power Switch to turn the vacuum on.

Q: Why does the LaserEye keep moving backwards during cleaning?

A (1): The lighting may be generating heat. Do not have the RolliBot operate under direct sunlight as this may cause refraction and interfere with the vacuum's laser emissions which will cause malfunctions.

A (2): The carpeting or floor surface may be too dark and/or causing issues with the sensors. It is not recommended that you use the LaserEye on black or dark carpet or flooring.

A (3): There may be a sensor issue. Check the vacuum's sensors for excess dust and clean as needed.

Q: Why isn't the LaserEye returning to its Charging Station?

A (1): The Charging Station may not be receiving power. Make sure the adapter is securely plugged in.

A (2): The LaserEye may have encountered obstacles which caused it to run out of battery power before it was able to reach the Charging Station. Ensure your LaserEye is fully charged before each use.

Q: Why isn't the LaserEye charging?

A: The contacts on the Charging Station or underneath LaserEye may need cleaning. Turn off the LaserEye and wipe down all contacts with dry, non-abrasive cloth then resume charging.

Q: Why isn't the LaserEye picking up dirt or debris?

A: Check the dustbin to see if it is full. Clean out the dustbin and restart cleaning.

Q: Why is there a code showing up?

A: The LaserEye encountered an error. See the following section.

11.2 Error Codes

When the LaserEye encounters certain issues, the top of the vacuum will display errors in different codes to communicate the issue. Make note of the code and refer to information below.

Code	Related Error	Solution(s)
E001	Cliff Sensor Error	Check the Cliff sensor surfaces for debris or blockage. Clean as needed.
E002	Agitator Error	Check both agitators for tangles or blockage. Clean as needed.
E003	Battery is low	Place the LaserEye on its Charging Station and allow it to recharge
E004	Wheel Error	Check the wheels for debris or blockage. Clean as needed.
E005	Dustbin Error	Clean and replace the dustbin then resume cleaning.
E006	Balance Error	Place the vacuum on level ground and resume cleaning.
E007	Edge brush error	Check the edge brush for tangles or blockage. Clean as needed.

If any cleaning etc. was performed to resolve an error, place the LaserEye back on the floor and wait for the error to clear. If the error does not clear, restart the LaserEye with the Power Switch.

If the information in Sections 11.1 and 11.2 do not resolve your issue, please visit our website at www.rollibot.com or contact customer support **1-844-585-6295**.

Section 12. Warranty

12.1 Violation

The vacuum cannot be repaired or serviced within its warranty period if any of the following has occurred:

- Failure to store the vacuum properly as indicated in this manual
- The warranty has expired
- Damage occurred during or in relation to non-routine and/or unauthorized disassembly
- Failure to provide a valid proof of purchase when requesting service or repair
- Damage occurred as a result of natural disaster etc.
- Damage occurred due to unexpected factors or man-made reasons (including mis-operation, fluid found in any openings, improper insertion or pulling, hauling, bumping, improper voltage input and others).

12.2 Information

One Year Limited Hardware Warranty

Your LaserEye Robotic Vacuum (“Product”) includes a One Year Limited Hardware Warranty (“Warranty”). The Warranty covers product defects in materials and workmanship under normal use. This Warranty is limited to residents of the United States and Canada only and is available only to original purchasers. This Warranty gives you specific legal rights and you may also have other rights which vary from state to state.

This Warranty starts on the date of your purchase and lasts for one year (the “Warranty Period”). The Warranty Period is not extended if the Product is repaired or replaced. We may change the availability of this limited warranty at our discretion, but any changes will not be retroactive.

Warranty services are provided by Warranty Pro. If a hardware defect arises and a valid claim is received within the Warranty Period, at its option and to the extent permitted by law, RolliBot will: (1) repair the hardware defect by using new or refurbished parts that are equivalent to new in performance and reliability; or (2) exchange the Product with a product that is new or refurbished which is substantially equivalent to the original product. This Warranty is for one replacement only of like-items and does not cover items out of production if the product is no longer made or stocked. This Warranty is not assignable or transferable. The original purchaser may call RolliBot’s toll-free number at 1-844-585-6295 for service request.

When a product or part is exchanged, any replacement item becomes your property and the replaced item becomes RolliBot’s property. This warranty only covers technical hardware defectiveness during the warranty period and under normal use conditions. RolliBot does not warrant uninterrupted or error-free operation of this Product.

This Warranty does not cover any damage due to: (a) transportation; (b) storage; (c) improper use; (d) failure to follow the product instructions or to perform any preventive maintenance; (e) modifications; (f) unauthorized repair; (g) normal wear and tear; or (h) external causes such as accidents, abuse, or other actions or events beyond our reasonable control.

Important: Do not disassemble the Product. Disassembling the Product will void this Warranty. Only RolliBot or a party expressly authorized by RolliBot should perform service on this Product.

DISCLAIMER OF WARRANTY: THE REMEDIES DESCRIBED ABOVE ARE YOUR SOLE AND EXCLUSIVE REMEDIES AND OUR ENTIRE LIABILITY FOR ANY BREACH OF THIS LIMITED WARRANTY. OUR LIABILITY SHALL UNDER NO CIRCUMSTANCES EXCEED THE ACTUAL AMOUNT PAID BY YOU FOR THE DEFECTIVE PRODUCT, NOR SHALL WE UNDER ANY CIRCUMSTANCES BE LIABLE FOR ANY CONSEQUENTIAL, INCIDENTAL, SPECIAL OR PUNITIVE DAMAGES OR LOSSES, WHETHER DIRECT OR INDIRECT.

SOME STATES DO NOT ALLOW THE EXCLUSION OR LIMITATION OF INCIDENTAL OR CONSEQUENTIAL DAMAGES, SO THE ABOVE LIMITATION OR EXCLUSION MAY NOT APPLY TO YOU.

THE DURATION AND REMEDIES OF ALL IMPLIED WARRANTIES, INCLUDING WITHOUT LIMITATION THE WARRANTIES OF MERCHANTABILITY AND FITNESS FOR A PARTICULAR PURPOSE ARE LIMITED TO THE DURATION OF THIS EXPRESS LIMITED WARRANTY.

