

# TomTom Golfer 2 and TomTom Golfer 2 SE User Manual

3.0



# Contents

<b>Welcome</b>	<b>4</b>
<hr/>	
<b>Getting started</b>	<b>5</b>
<hr/>	
<b>Your watch</b>	<b>7</b>
<hr/>	
About your watch .....	7
Cleaning your watch.....	8
Using the USB dock .....	8
Watch status .....	8
About soft reset .....	9
About power-off reset .....	9
About factory reset.....	10
Backing up your golf rounds .....	10
<hr/>	
<b>Playing a round of golf</b>	<b>12</b>
<hr/>	
Quick Start: Playing your first hole .....	12
Choosing a course .....	13
Updating golf course information .....	13
Pausing, stopping and continuing a round.....	14
Reporting a change for a course .....	14
<hr/>	
<b>Doglegs</b>	<b>15</b>
<hr/>	
Understanding doglegs on your watch .....	15
<hr/>	
<b>Laying up</b>	<b>17</b>
<hr/>	
Laying up using your watch .....	17
Layup and green views.....	18
<hr/>	
<b>Approaching the green</b>	<b>19</b>
<hr/>	
Approaching the green using your watch .....	19
Layup and green views.....	19
<hr/>	
<b>Hazards</b>	<b>21</b>
<hr/>	
Understanding hazards on your watch .....	21
Zooming in on a hazard .....	22
<hr/>	
<b>Scoring</b>	<b>24</b>
<hr/>	
Scoring using your watch .....	24
Viewing previous scores .....	25
Deleting score cards from your watch .....	26
<hr/>	
<b>Autoshot detection</b>	<b>27</b>
<hr/>	
About autoshot detection .....	27

Manually recording a stroke .....	27
Removing a detected stroke .....	28
<b>Activity tracking</b>	<b>29</b>
<hr/>	
About activity tracking .....	29
Setting a daily activity goal .....	29
Switch off activity tracking .....	29
Monitoring your activity .....	30
<b>Settings</b>	<b>31</b>
<hr/>	
About settings .....	31
About .....	31
Clock .....	31
Tracker .....	32
Phone .....	32
Airplane mode .....	34
Options .....	34
Profile .....	35
Standards .....	35
<b>TomTom Sports account</b>	<b>36</b>
<hr/>	
<b>TomTom Golfer mobile app</b>	<b>37</b>
<hr/>	
<b>TomTom Sports Connect</b>	<b>39</b>
<hr/>	
<b>Glossary of Terms</b>	<b>40</b>
<hr/>	
<b>Addendum</b>	<b>42</b>
<hr/>	
<b>Copyright notices</b>	<b>47</b>
<hr/>	

# Welcome

---

This User Manual explains everything you need to know about your TomTom Golfer watch. Your TomTom Golfer can be used for normal stroke play, also known as medal play.

If you want to quickly read about the essentials, we recommend that you read [Getting started](#). This covers downloading TomTom MySports Connect and using the USB desk dock.

Next, if you have a smartphone, you'll probably want to download the TomTom Golfer app for free from your usual app store or by going to [tomtom.com/app](https://tomtom.com/app).

For information about what you see on the watch and how to use it, here are some good starting points:

- [About your watch](#)
- [Quick Start: Playing your first hole](#)
- [Activity tracking](#)
- [Settings](#)

**Tip:** There are also frequently asked questions (FAQs) at [tomtom.com/support](https://tomtom.com/support). Select your product model from the list or enter a search term.

We hope you enjoy reading about and, most importantly, playing golf with your new TomTom Golfer!

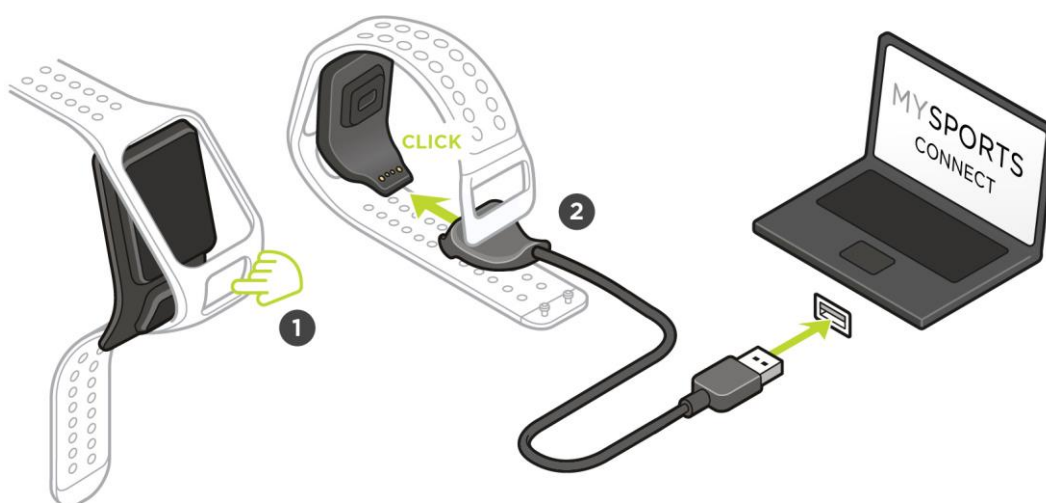
# Getting started

---

Before you start playing golf, it's a good idea to charge your watch and download the TomTom MySports app for your smartphone and TomTom MySports Connect for your desktop computer or laptop.

**Tip:** You can update golf courses and get software updates using Sports Connect.

1. Download and install the [TomTom Golfer mobile app](http://tomtom.com/app) on your phone from [tomtom.com/app](http://tomtom.com/app).
2. Download the [TomTom Sports Connect](http://tomtom.com/123/) desktop application from [tomtom.com/123/](http://tomtom.com/123/). Install TomTom Sports Connect on your computer. TomTom Sports Connect is available for free.
3. Place your watch in the [USB dock](#) and connect the dock to your computer. Follow the instructions that TomTom Sports Connect gives you.



After your watch is charged, you can [play your first hole](#).

**Tip:** Your watch is fully charged when the battery animation stops moving and shows a full battery.

You should connect your watch to your computer regularly to charge it, update golf course information, download software updates, and download QuickGPSFix information.

---

**Important:** You can also use any USB wall charger to charge your TomTom Golfer. Place your watch in the USB dock and then connect the USB connector from the USB dock to your USB wall charger.

---

## Battery life

When the battery is fully charged, your watch can be used for up to 10 hours of playing golf. The battery is used more quickly if you frequently use the [backlight](#) on your watch.

**Tip:** Your watch shows a low battery symbol if there is not enough charge for a complete round of golf (4 hours). A low battery symbol with a line through it means that you need to charge your watch immediately.

### TomTom Golfer app

You can download the TomTom Golfer app for free from your usual app store or by going to [tomtom.com/app](https://www.tomtom.com/app).

To learn more, go to [TomTom Golfer mobile app](#) in this guide.

---

**Important:** To transfer round data from your TomTom Golfer watch to your mobile phone, your phone needs to be connected to the internet. This can be an internet connection using a cellular network or Wi-Fi®.

---

### Pairing your watch with your phone

To learn more, go to [Phone](#) in this guide.

# Your watch

---

## About your watch

When you use your watch, you start from the Clock screen. This screen shows the [time and date](#). The hour number is shown slightly dimmed and the minutes are shown brighter so you can see the precise time more clearly.

Use the button to press up, down, left, or right to access other screens on your watch.



1. Press down - opens the [Settings](#) menu.
2. Press right - opens the [Golf course](#) menu.
3. Press up - opens the [Scorecard history](#) screen.
4. Cover the screen with your palm to turn on the backlight.
5. Press long left - pause and exit an activity.

The Clock screen shows the time and date. You can choose to show the time in 12-hour or 24-hour format by pressing down to open the **SETTINGS** (page 31) menu, then selecting **Clock**.

## Using your watch

Press up or down to select items in a menu.

Press right to select an item and open the menu for that item.

Press left to exit a menu or long press left to pause and exit a round.

To select an option in a menu, make sure it is highlighted when you leave the menu. Your watch remembers the option you highlighted.

If a menu option can be turned on and off, press right to change the setting.

## Cleaning your watch

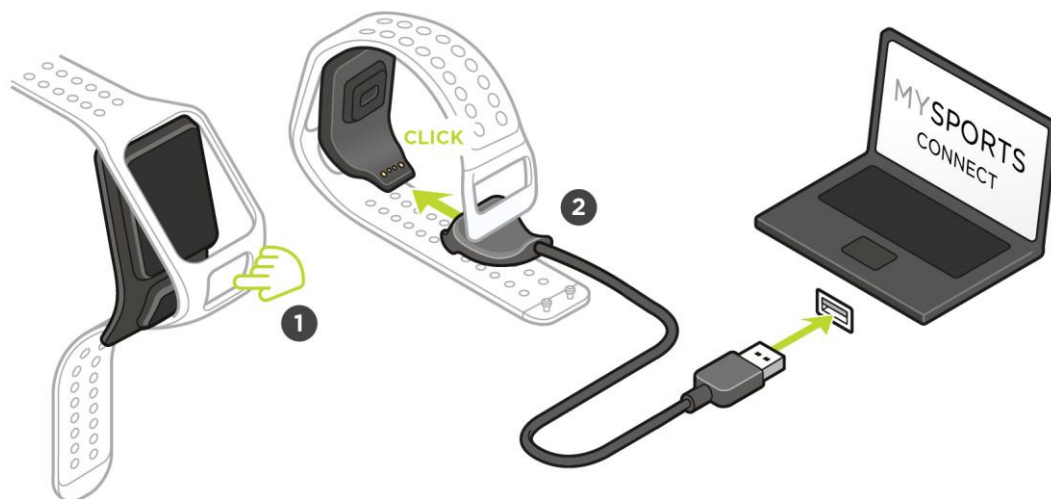
It is recommended that you clean your watch once a week if you use it frequently.

- Wipe the watch with a damp cloth as needed. Use mild soap to remove oil or dirt.
- Do not expose your watch to strong chemicals such as gasoline, cleaning solvents, acetone, alcohol, or insect repellents. Chemicals can damage the watch's seal, case and finish.
- Straps should not be left next to a radiator or in direct sunlight.

## Using the USB dock

You can use the USB desk dock when your watch is in the wrist strap or you can remove your watch from the wrist strap first.

To remove the watch from the wrist strap, hold your watch in both hands, place your thumbs on the big button and your forefingers on the back edges of the watch frame, and press your thumbs down on the big button until the watch clicks free from its frame.



To place your watch in the USB dock, slide the watch into the dock, following the curve of the back of the watch until it clicks into place.

To remove your watch from the USB dock, push underneath the screen of the watch. The watch will slide out, following the curve of the back of the watch. Do not lift the watch from the top as this can damage the USB dock.

---

**Important:** You can also use any USB wall charger to charge your TomTom Golfer. Place your watch in the USB dock and then connect the USB connector from the USB dock to your USB wall charger.

---

## Watch status

From the Clock screen, press down to open **SETTINGS** and then select **ABOUT** to see the Watch Status screen.

The status screen shows the following information:

- **Battery** - the battery power remaining on your watch.

To charge the battery, place the watch in the desk dock and [connect the dock](#) to your computer.

- **Storage** - the remaining storage on your watch. You get a warning if you run out of space to store any more golf scores. To make more space, [sync](#) your watch with your phone regularly.
- **QuickGPS** - the status of the QuickGPSFix information on your watch.

QuickGPSFix helps your watch find your precise location quickly so that you can start your round of golf. To update the QuickGPSfix information on your watch, connect your watch to your computer or use the Golfer app. TomTom Sports Connect automatically updates QuickGPSfix on your watch. QuickGPSfix information is valid for three days after you download it.

These symbols are used to show the status of QuickGPSFix:



QuickGPSFix on your watch is up to date.



QuickGPSFix on your watch is out of date. If the QuickGPSFix information on your watch is out of date, your watch still works as usual. It may, however, take longer to get a GPS fix when you want to [play a round of golf](#).

- **Version** - the software version number and serial number of your watch. You may need this information if you contact Customer Support. Every time you connect your watch to your computer, TomTom Sports Connect checks if a software update is available for your watch.

## About soft reset

A soft reset is performed each time you disconnect your watch from a wall charger or computer.

To perform a soft reset on your watch, follow these steps:

1. Connect your watch to a wall charger or computer.  
Wait until your watch shows a battery symbol.  
If you are using a computer, wait until TomTom Sports Connect finishes updating your watch.
2. Disconnect your watch from the wall charger or computer.  
The software on your watch restarts. This performs a soft reset on your watch.

## About power-off reset

### Power-off reset

You can use this type of reset in the following situations:

- The step count stops working.
- The sleep count stops working.
- You can no longer update QuickGPSfix on your watch.

To perform a power-off reset on your watch, follow these steps:

1. Connect your watch to your computer and wait until TomTom Sports Connect finishes updating your watch.
2. Click **SETTINGS** in TomTom Sports Connect.
3. Hold the Ctrl (Windows) or cmd (macOS) key while hovering the mouse over **Reset**.  
**Reset** turns into **Turn off**.
4. Click **Turn off**.
5. Disconnect your watch from the computer.  
Your watch switches off.

6. To wake up your watch again, reconnect it to your computer or press and hold the button in any direction.

## About factory reset

---

**Important:** When you perform a factory reset in TomTom Sports Connect, all personal data and settings on your watch are deleted. This action cannot be undone.

You should only use a factory reset as a last resort to restore your watch or if you really want to remove all your data and settings from your watch.

---

A factory reset reinstalls the software on your watch and removes the following:

- Your activities on the watch.
- Your settings on the watch.
- Your settings for uploading activities in TomTom Sports Connect.

**Note:** If you are using the TomTom Golfer mobile app, you may need to make your smartphone forget your watch. Then pair your watch again.

**Android™** - In the **Bluetooth®** Settings menu of your Android™ device, un-pair or forget your watch.

**iOS** - Go to the iOS Bluetooth settings screen, click on the (i) icon behind the watch name and select Forget this Device.

---

**Important:** When performing a factory reset, do not disconnect your watch before TomTom Sports Connect has finished restoring your watch. This takes several minutes. Check any messages shown in TomTom Sports Connect and on your watch before you disconnect your watch.

---

To perform a factory reset on your watch, follow these steps:


1. Connect your watch to your computer and wait until TomTom Sports Connect finishes updating your watch.
2. Click **SETTINGS** in TomTom Sports Connect.
3. Click **Reset**.  
TomTom Sports Connect downloads the latest version of the software for your watch.
4. Keep your watch connected while TomTom Sports Connect installs the software on your watch.
5. Click **Log in**.  
TomTom Sports Connect opens the TomTom Sports website.
6. Do one of the following:
  - Click **Create account and register device** to create a new TomTom account.
  - Click **Sign in and register device** to register your watch with an existing TomTom account.
7. Follow the instructions that the TomTom Sports website gives you.  
The global golf courses are downloaded onto your watch after you register your device.

## Backing up your golf rounds

You can manually back up your rounds using the TomTom Golfer mobile app. To do this, follow these steps.

Select your operating system below:

### Android - Windows

1. Connect your smartphone to your computer.
2. Press the Windows logo key +E to open the Windows file explorer.

3. In the list of devices with removable storage, double-click your Android device's memory card.
4. Open **TomTom\_TomTom Sports/[watch serial number]**.
5. Copy the folder named **Rounds** and save it on your computer.

#### **Android - Mac OS X**

1. Connect your smartphone to your computer.
2. Click Finder in the Dock to open a Finder window.
3. In the side bar, click your Android device's memory card.
4. Open **TomTom\_TomTom Sports/[watch serial number]**.
5. Copy the folder named **Rounds** and save it on your computer.

#### **iOS**

1. Connect your iOS device to your computer and wait for iTunes to open.
2. Click on the device's icon in the upper-left corner of iTunes.
3. Select Apps in the iTunes side bar and scroll down to File Sharing.
4. Select TomTom Sports.
5. Select all **.golf2** files and save them on your computer.

# Playing a round of golf

---

## Quick Start: Playing your first hole

To play your first hole, do the following:

1. From the Clock screen, press right.  
Your watch shows **Please wait**. When a GPS fix is found, you see a list of nearby golf courses.
2. Press up or down to select a course, then press right to start a round.
3. The first hole is shown, and you see the following information on the range screen on your watch:
  1. A bent arrow shows whether the hole has a dogleg or not, and dogleg direction.
  2. Hole number (next to the flag symbol).
  3. Par for the hole.
  4. The distance from your last swing.
  5. Distance from your position to the back, center and front of the green.

**Note:** Distance to the pin is not shown because pin placement may vary from day to day.

**Tip:** Press right to see more information about the hole.



4. Take as many practice swings as you like.

**Tip:** You can take several practice swings without affecting your scorecard because only one stroke is added to the scorecard at each location.

5. Play your first stroke and then walk to the location of your golf ball.  
Distance from the last swing is shown.
6. Play the remainder of the strokes for this hole until you hole out.

**Note:** If a shot isn't automatically detected, cover the screen with your palm to manually add a chip or putt.

7. Edit the score when you see the scorecard alert or press right twice to edit the score as you play.
8. Walk to the second hole. Your watch automatically detects when you move to the next hole or you can press up or down from the range screen to manually move to the next hole.

## Choosing a course

**Tip:** When your watch shows **Please wait** while waiting for a QuickGPSFix, you can press down to browse recent courses. The watch vibrates when a fix is found.

Press up or down in the golf course menu to choose a golf course.



Press right when you are ready to start playing.

Press left to go back to the Clock screen.

**Note:** To find out if your golf course is available on the watch, go to [tomtom.com/en-gb/golf/golf.html](http://tomtom.com/en-gb/golf/golf.html). The page is available in English.

## Updating golf course information

### One-off update to start receiving incremental course updates

To allow your watch to receive incremental updates, we recommend that you reinstall all courses globally.

Before you update the golf course information, make sure that you are using the latest version of the Sports Connect desktop application used to update your watch. If you don't have the latest version installed, an update link is shown next to the version:

- **Windows:** Click the watch icon in the notification area at the bottom right of your desktop and click **Settings**. The version is listed on the **About** tab.
- **Mac OS X:** Click the watch icon in the status bar at the top right of your desktop and click **Settings**. The version is listed on the **About** tab.

To update the golf course information on your TomTom Golfer, follow these steps:

1. Connect your watch to your computer.  
Sports Connect downloads and installs the latest changes to your recently played golf courses.
2. In Sports Connect, click **Update**.  
Sports Connect downloads and installs the latest software version.
3. Expand **SETTINGS** in Sports Connect.
4. Select the **GOLF COURSES** tab in Sports Connect and click **GET NEW MAPS**.  
Sports Connect downloads and installs all courses globally.

### Updating course information thereafter

You can update the golf courses on your TomTom Golfer in two ways:

1. [TomTom Golfer mobile app](#)

If you have a compatible phone, you can use the TomTom Golfer app to update all recently played golf courses and those within a range of 1000 meters.

2. [TomTom Sports Connect](#)

Each time you connect your watch to your computer, Sports Connect downloads and installs the latest changes to your recently played golf courses.

If you need to update all golf courses globally, for example when you plan to travel, expand **SETTINGS** in Sports Connect. Select the **GOLF COURSES** tab and click **GET NEW MAPS**.

**Note:** Reinstalling all courses can take approximately an hour.

### Pausing, stopping and continuing a round

#### Pausing and restarting a round of golf

During a round of golf, do a long left press to stop the clock and pause your round.

To resume your round again, press right.

#### Stopping a round of golf

To stop the round, do a long left press to pause and then another long left press to return to the Clock screen.

#### Continuing a round of golf

**Tip:** You can only continue a round of golf if you have previously entered at least one number on your scorecard.

To continue a round of golf, do the following:

1. From the Clock screen, press right and choose the course you were playing previously.
2. Press right to go to the Range screen.  
You are asked if you wish to resume your scorecard.
3. Press right to choose **YES** or press left to select **NO**.

**Note:** You can resume a scorecard for up to 24 hours after pausing a round and returning to the Clock screen. The scorecard is still saved in your Score history if you select **NO**.

### Reporting a change for a course

You can report changes to golf courses here:

[Reporting changes to a golf course](#)

# Doglegs

---

## Understanding doglegs on your watch

Your TomTom Golfer can show whether any doglegs are present on a hole.

A dogleg is shown on your watch as an arrow icon on the range screen. The direction the arrow points shows you whether the dogleg bends to left or to the right.



You may choose to hit over a dogleg or to lay up instead.

**Note:** Double doglegs are not supported by your TomTom Golfer.

## Position of doglegs on the fairway

Your TomTom Golfer shows the position of doglegs relative to their position on the actual course.

For example, the watch below is showing a dogleg right at 230 yards/meters from your current position.



The distance to the start of the dogleg is measured along the course center line.

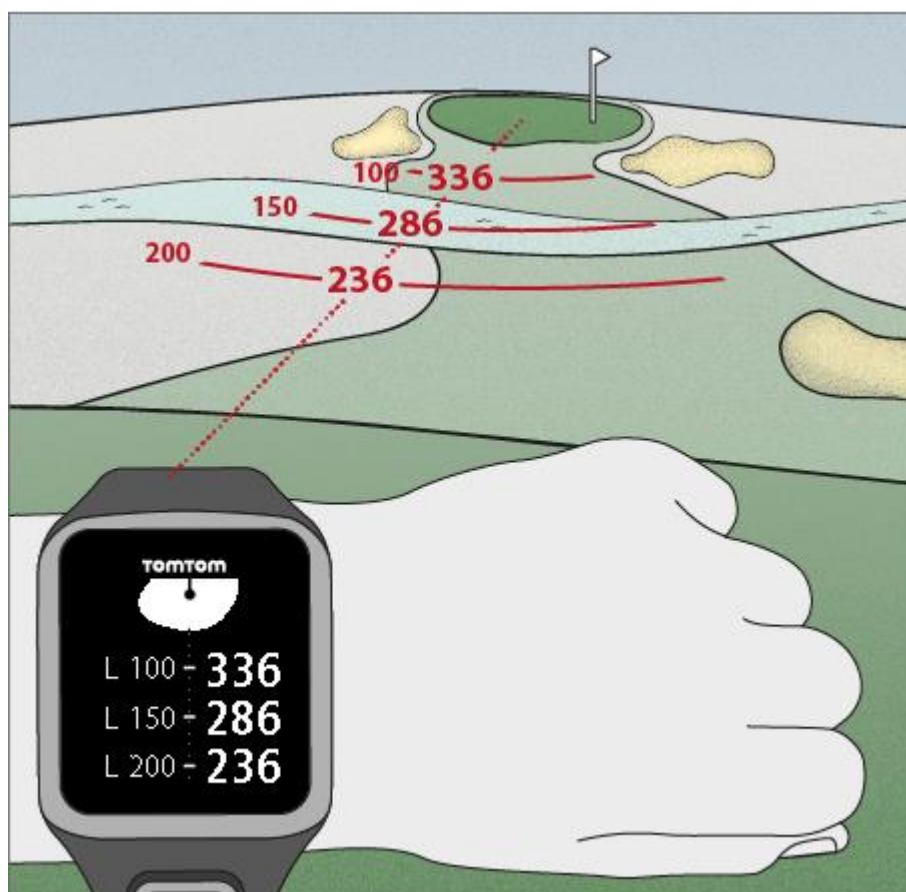
# Laying up

## Laying up using your watch

The layup screen during play (see below) shows the layup markers on the left-hand side of the watch screen and your current distance from that marker on the right-hand side of the watch screen.

So as you look toward the pin, you can see how far away you currently are from the 200, 150 and 100 yard/meter markers.

For example, in the image below, the golfer is 236 yards/meters from the 200 yard/meter layup marker.



As you walk the hole toward the pin, your current distance from the first L200 marker on the right-hand side of the watch screen decreases.

When you reach a layup marker, the layup marker disappears from the screen.

The default distances for the layup markers are 100, 150, 200.

**Note:** Keep pressing up to cycle through the Hazards, Layup, or Green view screen, depending on which are applicable for the current hole. Green view is always present.

**Tip:** If poor or a loss of signal occurs, the range values gray and display the last values that were deemed to be good or accurate.

**Layup and green views**

As you approach the green, press up or down to swap between the layup screen and the green view as shown below.



Once you have passed the last layup marker, the watch automatically shows only the view of the green.

# Approaching the green

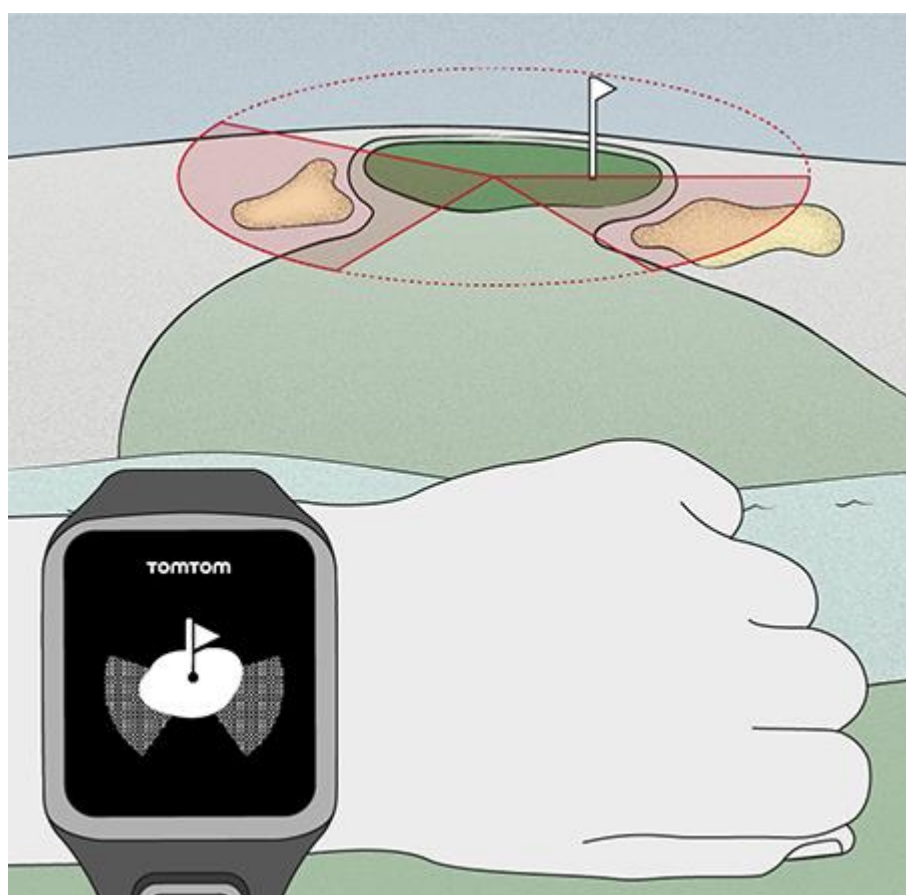
---

## Approaching the green using your watch

As seen from the example below, the shape of the green on your watch mirrors the shape of the actual green that you are approaching.

Any surrounding hazards are shown as patterns. Water is shown using a wave pattern and bunkers as a dotted pattern. If a water and sand hazard are in the same area surrounding the green, water takes priority and that pattern is shown over the sand pattern.

The distance to the center of the green is shown and reflects the middle value on the range screen.



## Layup and green views

As you approach the green, press up or down to swap between the layup screen and the green view as shown below.



Once you have passed the last layup marker, the watch automatically shows only the view of the green.

# Hazards

---

## Understanding hazards on your watch

Your TomTom Golfer can show you nearby water hazards or bunkers that are within 300 meters (328 yards).

On your watch, hazards are shown as a water or sand pattern, alongside distance measurements to the hole, such as 293 (back) and 278 (front) as shown below.



## Position of hazards on the fairway

Your TomTom Golfer shows the position of hazards relative to their position on the actual course.

For example, the watch below is showing a [bunker](#) approximately 220 yards/meters on the right and a [water hazard](#) 275 yards/meters straight ahead that you will need to hit the ball over - it is approximately 15 yards/meters wide.



If there are no hazards on a hole or you have passed them already, you see a check mark in the middle of the Hazards screen.

**Note:** When there is no information available about hazards on a hole, you see a message saying **No info.**

### Zooming in on a hazard

Your TomTom Golfer shows the position of hazards relative to their position on the actual course.



To see more detail about the hazards currently in front of you, do the following:

1. Go to the Hazards screen.
2. Cover the screen of your TomTom Golfer with your palm as if you are turning on the [back light](#). You see a zoomed-in view of the hazards currently in the middle of the screen showing accurate distances and more detail.



3. To zoom out, cover the screen again with your palm.

**Tip:** You don't see doglegs in the zoomed-in Hazards screen.

# Scoring

---

## Scoring using your watch

After playing a hole, press right until you see the scorecard screen. The scorecard is used for recording your score for each hole, and it also shows you your total score so far for the round.

**Tip:** To turn on prompting for your score before you move to the next hole, press down to open the **SETTINGS** menu from the Clock screen, then select **OPTIONS** and press right, select **HOLE**. Select **SOUNDS**.



1. Your score relative to par for the round.  
"E" means even par for the hole. A plus sign (+) means over par, and a minus sign (-) below par.
2. The identifying number of the hole, for example, here the golfer is on the first hole.
3. The par for the hole. For example, the first hole shown above is a par 5.
4. The total number of strokes taken so far for a round. In this example, the golfer has played one hole and taken 5 strokes so the total for the round so far is also 5 strokes.
5. The number of strokes for the hole just played.  
Enter the score for a hole by pressing up and down until the number of strokes that you played for that hole are shown.

**Note:** If you hit a ball [out of bounds](#) or onto an adjoining hole by mistake, just record the extra strokes on your watch as part of the total for that hole after you finished playing it. To record an extra stroke, cover the screen with your palm when you are in the Range or Scorecard screens.

## Viewing previous scores

1. Press up from the Clock screen to see scores from your previous rounds.



You see the dates of your recent rounds along with the overall score for the round, for example as shown above, 3 under, 2 under or even par.

2. Press up and down to choose a previous round to look at in more detail, then press right. You see the name of the course you played.
3. Press right to see the par and total score for the round, split into the front 9 holes and back 9 holes, as shown below.



4. Press right to see the score for each hole of that previous round.
5. Press left to go back to the name of the course.

**Tip:** Up to 250 completed scorecards can be stored on the watch, and this information includes the overall score and per hole score for each round.

## Deleting score cards from your watch

To remove the scorecards from your TomTom Golfer, do the following:

1. Do a [factory reset](#).
2. Reinstall the golf courses which can take approximately 80 minutes. Follow the instructions in [Updating golf course information](#).
3. Make your smartphone forget the watch in your Bluetooth settings and then pair it again following the instructions in [Phone](#).

# Autoshot detection

---

## About autoshot detection

Your watch automatically records when you make a swing or shot and tells you by vibrating and showing an alert.

You can change the settings for autoshot detection, including sounds, by pressing down from the Clock screen to open the **SETTINGS** menu. Select **OPTIONS**. Press right to open the **OPTIONS** menu.



The watch vibrates because if you hold a 4-5-second follow-through after playing your stroke, you may miss seeing the alert.

**Note:** You can make several practice swings without affecting your scorecard because only one stroke is added to the scorecard from each location. If you need to add more strokes, for example, due to a penalty shot, you can record a stroke manually by covering the screen with your palm.

---

**Important:** All putts need to be recorded manually. See: [Manually recording a stroke](#).

---

## Manually recording a stroke

Occasionally [autoshot detection](#) may not record a stroke, and in these situations you can manually record a stroke instead. Also, all putts need to be recorded manually.

To manually record a stroke, cover the screen of your watch with your palm.

When you manually record a stroke on the green, it is recorded as a putt.



**Note:** You can make several practice swings without affecting your scorecard.

### Removing a detected stroke

If a stroke is accidentally detected, you can remove it before it is counted.

When you see the current "+1 stroke" alert, press left to select **CANCEL** within 10 seconds.



# Activity tracking

---

## About activity tracking

**Note:** Activity tracking is not supported by the TomTom Golfer 2 SE.

You can use your TomTom Golfer to track how active you are. Here are some of things you can do:

- Track steps, time spent being physically active, calories burned and distance moved.
- Set a daily goal for one of these metrics on your watch.
- Use a weekly goal that is automatically generated based on your daily goal multiplied by 7.
- See your daily and weekly progress for your set goal.

## Activity Tracking Accuracy

Activity tracking aims to provide information to encourage an active and healthy lifestyle. Your watch uses sensors that track your movement. The data and information provided is intended as a close estimation of your activity, but may not be completely accurate, including step, sleep, distance and calorie data.

## Setting a daily activity goal

**Note:** Activity tracking is not supported by the TomTom Golfer 2 SE.

Activity tracking is switched ON by default and 10,000 steps is automatically pre-set as a goal for you. To change or set an activity tracking goal for the day, do the following:

1. From the Clock screen, press down to open the **SETTINGS** menu.
2. Select **TRACKER**.
3. Select **GOALS**.
4. Select the goal you want to set: **STEPS**, **TIME**, **CALORIES** or **DISTANCE**.
5. Press right.
6. Set your goal for, for example, the number of steps you want to achieve.
7. Press right to go back to the **TRACKER** screen.
8. Press left twice to go back to the Clock screen.

**Tip:** Some examples of typical goals are 30 minutes of active time per day or 10,000 steps per day.

**Note:** Unless you have an alarm switched on, when you reach a goal you see a badge on the watch screen and hear an alert.

## Switch off activity tracking

**Note:** Activity tracking is not supported by the TomTom Golfer 2 SE.

To switch activity tracking off, do the following:

1. From the Clock screen, press down to open the **SETTINGS** menu.
2. Select **TRACKER**.
3. Select **GOALS**.
4. On the **GOALS** screen, select **OFF**.

## Monitoring your activity

**Note:** Activity tracking is not supported by the TomTom Golfer 2 SE.

To see how active you have been, do the following:

1. From the Clock screen, press left to see how you are progressing towards your goal.
2. Press up or down to see distance, time, or calories, depending on the goals you have set.
3. To see steps per week, press left again.
4. Press right twice to go back to the Clock screen.

# Settings

---

## About settings

From the Clock screen, press down to open the **SETTINGS** menu. These settings determine the overall behavior of your watch.

The following settings are available for your watch:

- [About](#)
- [Clock](#)
- [Tracker](#)
- [Phone](#)
- [Airplane mode](#)
- [Options](#)
- [Profile](#)
- [Standards](#)

## About

From the Clock screen, press down to open the **SETTINGS** menu, then select **ABOUT** and press right to open the **WATCH STATUS** screen.

See [Watch status](#) for a description of the information on this screen.

## Clock

From the Clock screen, press down to open the **SETTINGS** menu, then select **CLOCK** and press right to open the **CLOCK** menu.

### Alarm

Select **ALARM** to turn the alarm on and off and to set the alarm time.

When the alarm goes off, press left to stop it or press right to snooze. If you snooze the alarm, it goes off again in 9 minutes.

### Time

Select **TIME** to set the time on your watch. The time is either set using the 12- or 24-hour clock, depending on the setting for **24HR**.

### Date

Select **DATE** to set the date on your watch.

### 24HR

Select **24HR** to switch between using the 12 hour clock and the 24 hour clock to display and set the time. Press right to switch between **ON** and **OFF** for this setting.

## Tracker

### GOALS

From the Clock screen on your watch, press down to open the **SETTINGS** menu, then select **TRACKER**. Press right to select **GOALS**.

For more information, see Setting a daily activity goal.

### Switching off activity tracking

From the Clock screen on your watch, press down to open the **SETTINGS** menu, then select **TRACKER**. Activity tracking is **ON** by default so select **OFF** to switch off activity tracking.

## Phone

The TomTom Golfer mobile app allows you to automatically upload your sports activity data from your TomTom Golfer to the Golfer app using your smartphone. In addition, the app downloads QuickGPSfix data to your watch.

For more information about why you may want to pair your watch with your phone or mobile device, see TomTom Golfer app.

To pair your watch with a phone or mobile device, do the following:

1. Make sure that your phone or mobile device is close by.
2. On your phone, make sure that Bluetooth is enabled.
3. From the clock screen on your watch, press down to open the **SETTINGS** screen, then select **PHONE** and press right.
4. Press right to start pairing.
5. On your phone, start the TomTom Golfer app and tap to connect.



6. When the name of your watch appears, tap on it.
7. On your phone, enter the pin number shown on the watch, then tap **PAIR**.  
Your watch is now paired with your phone or mobile device.

When pairing has been completed, you see a "Connected" message on your watch.



As long as you have the mobile app active or running in the background on your phone or mobile device, the watch automatically tries to connect when it has a new activity to upload or when the QuickGPSFix data is out of date.

If you open the Golfer app on your phone and it is trying to connect to your watch, you may need to wake up your watch by moving away from the clock screen. Press down, left or right from the clock screen.

### **Synchronizing course information**

You can automatically synchronize golf course information with your TomTom Sports account by using this setting.

From the clock screen on your watch, press down to open the **SETTINGS** screen, then select **PHONE** and press right.

Select **SYNC**. If automatic uploading is currently switched **OFF**, press up or down to turn automatic uploading on.

## Airplane mode

From the Clock screen on your watch, press down to open the **SETTINGS** screen, select **Airplane MODE** and then press right.



Press up or down to turn on airplane or flight mode.

When airplane mode or flight mode is turned on, an airplane icon is shown on the clock screen and all Bluetooth low energy (also known as BLE or Bluetooth® Smart) connectivity is disabled.

To turn airplane mode off, press up or down again.

## Options

From the Clock screen, press down to open the **SETTINGS** menu, then select **OPTIONS**. Press right to open the **OPTIONS** menu.

### Hole

Select **HOLE** to set hole advance and sound features. You can choose from the following options:

- **ADVANCE** - Select **ON** or **ON + SCORE** to make your watch automatically advance to the next hole after you complete the hole you are currently playing. Select **OFF** to turn off automatic hole advance. **ON + SCORE** prompts you to record your score as you advance to the next hole.
- **SOUNDS** - Select **BEEP + VIBRATE**, **BEEP** or **VIBRATE** to get prompts when you automatically advance to the next hole. Select **OFF** to switch all prompts off.

### Strokes

Select **STROKES** to control sounds for automatic shot detection.

- **SOUNDS** - These sounds or vibrations are heard when a shot is automatically detected and added to your scorecard. Select **BEEP + VIBRATE**, **BEEP** or **VIBRATE** or **OFF**.

### Units

Select **UNITS** to set the distance and weight units used on your watch. You can select any combination of yards or meters, and pounds or kilograms.

### Buttons

Select **BUTTONS** to set whether or not a buzz and sound alert occurs when you press the buttons on your watch.

**Tip:** Remember to follow rules and etiquette about noise levels during play when using this feature on the course.

## Profile

From the Clock screen on your watch, press down to open the **SETTINGS** menu, then select **PROFILE** and press right to open the **PROFILE** menu.

Select the following options to set your data in each case:

- **LANGUAGE**
- **CLUBS**
- **WEIGHT**
- **HEIGHT**
- **AGE**
- **GENDER**

### Language

Select **LANGUAGE** to set the language used for menus and messages on your watch.

### Clubs

Select left- or right-handed clubs.

**Tip:** Which wrist you wear the watch on has no effect.

### Sex

Gender is used by the TomTom Golfer when playing a hole that may have different par values for men and women. For example, a hole could be a par 5 for women and a par 4 for men.

## Standards

From the Clock screen, press down to open the **SETTINGS** menu, then select **STANDARDS** and press right to scroll through all the country-specific product certifications.

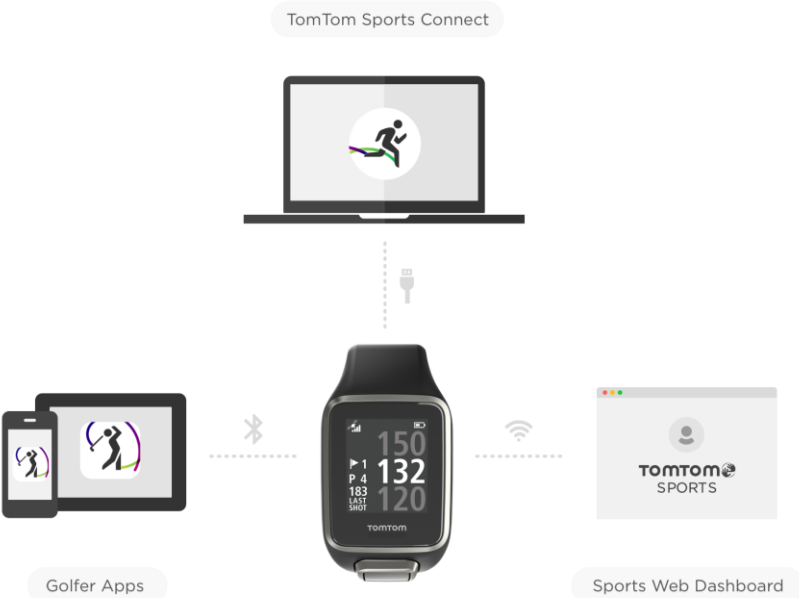
# TomTom Sports account

---

Your TomTom Sports account is a central storage location for all your sports information.

To create an account, click the button in TomTom Sports Connect or go directly to the website: [mysports.tomtom.com](https://mysports.tomtom.com)

As you can see from the diagram below, you can manage your Sports account using either TomTom Sports Connect or the TomTom Golfer app.



# TomTom Golfer mobile app

---

You can download the TomTom Golfer app for free from your usual app store or by going to [tomtom.com/app](https://tomtom.com/app).

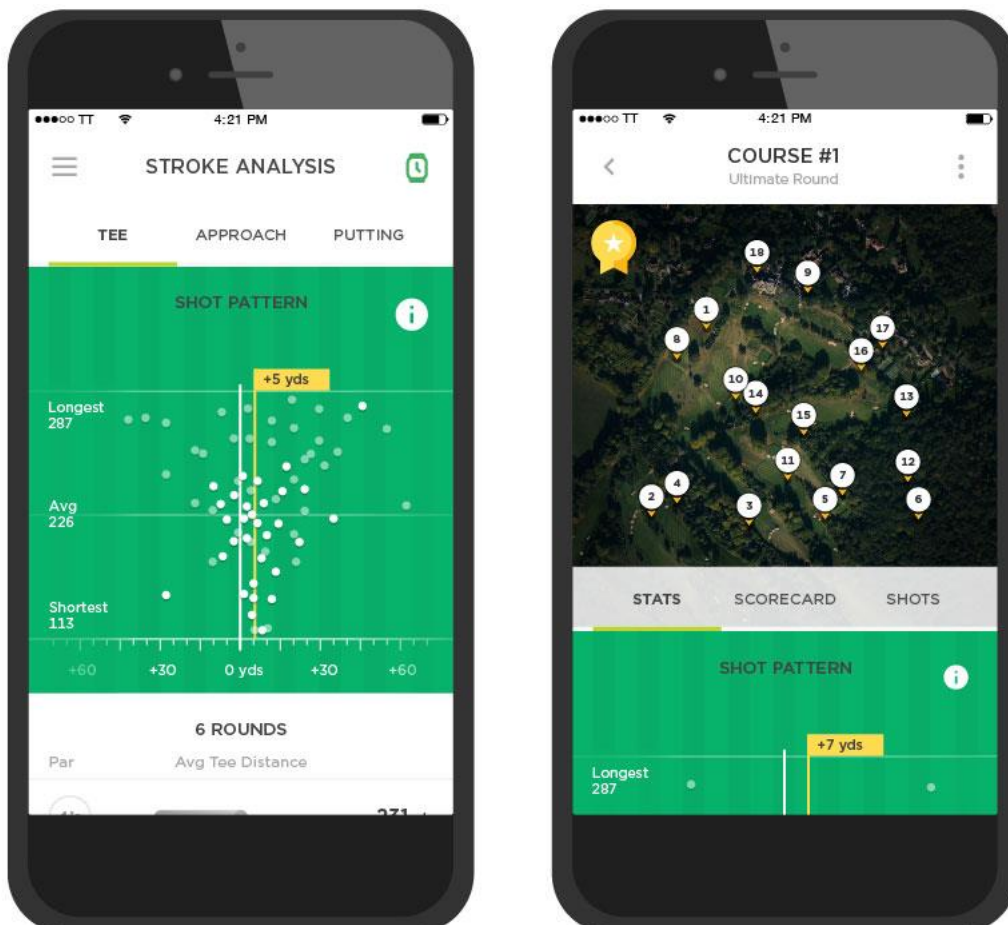
The TomTom Golfer mobile app does the following:

- Shows you stroke analysis, your ultimate round and your shot distribution or pattern.
- Updates golf course information.
- Updates the QuickGPSFix information on your watch.
- Provides an alternative to TomTom Sports Connect for updating QuickGPSfix.

---

**Important:** To transfer round data from your TomTom Golfer watch to your mobile phone, your phone needs to be connected to the internet. This can be an internet connection using a cellular network or Wi-Fi.

---



## Supported phones and mobile devices

### iOS

The TomTom Golfer app is compatible with iOS 7.1 and higher on the following Bluetooth Smart enabled devices:

- iPhone 5 or later.
- iPod touch 5th generation or later.
- iPad Pro, iPad Air.
- iPad 3rd generation or later.
- All iPad mini.

### Android

The TomTom Golfer app requires Bluetooth Smart (or Bluetooth LE) and Android 4.3 or higher to communicate with your watch. A range of Bluetooth Smart enabled Android devices have been tested to confirm their compatibility with the Golfer app. Check your phone's compatibility with the Golfer app by visiting the [Google Play™ Store](#).

# TomTom Sports Connect

---

TomTom Sports Connect does the following:

- Helps you set up your watch.
- Updates the software on your watch when new versions become available.
- Updates golf course information on your watch.
- Transfers any settings you make on TomTom Sports to your watch.
- Updates the QuickGPSFix information on your watch.

## Installing TomTom Sports Connect

You can download TomTom Sports Connect for free from here: [tomtom.com/123/](https://www.tomtom.com/123/)

Once installed, connect your watch to your computer using the [USB dock](#).

# Glossary of Terms

---

## A

### **Autoshot detection**

Your watch automatically records one swing or shot at each location and tells you by vibrating and showing an alert. If you make practice swings within 15 meters of a location, your watch doesn't add extra strokes and hence doesn't vibrate.

## B

### **Bunker**

A bunker is a steep-sided hole or shallow pit near the green or fairway that is usually filled with sand. It can be more difficult to play a ball from sand than from grass and bunkers sometimes have a raised lip which makes it difficult to hit the ball out of the bunker.

## D

### **Dogleg**

Some holes are deliberately designed with no direct line-of-sight from the tee to the green. A hole may bend either to the left or to the right and this bend is called a "dogleg," in reference to the similarity to a dog's ankle.

## G

### **Green**

A green, or putting green, is an area of closely trimmed grass surrounding the hole or pin. Holing out or getting the ball into the hole with the minimum number of strokes possible is the main aim of playing golf.

## H

### **Hazard**

A hazard is an area of a golf course which provides a difficult obstacle for the golfer to negotiate. A course may include water hazards such as lakes and rivers, man-made hazards such as bunkers, and natural hazards such as trees or thick vegetation.

Many recreational golfers use the term "hazard" to mean anything on a golf course that is hazardous to one's score such as thick rough or a tall tree in the middle of a fairway.

## L

### **Laying up**

A layup shot is made from the fairway after the drive, but due to the presence of a hazard, you have to deliberately make the shot shorter than usual or more accurate. This called laying up.

Most often, you lay up to avoid hitting the ball into a hazard on the fairway, or to put the ball in a more favorable position on the fairway for the next shot.

## **Layup marker**

A layup marker shows you how far away you currently are from the hole. For example, if you see L100, 223, it means that you are 223 yards/meters away from the 100 yard/meter marker.

The L100 marker is 100 yards/meters from the pin.

When you reach a layup marker, the layup marker disappears from the screen.

## **M**

### **Medal play**

Your TomTom Golfer can be used for normal stroke play, also known as medal play. This involves counting the total number of strokes taken on each hole during a round, or series of rounds. The winner is the player who has taken the fewest number of strokes over the course of the round, or rounds.

## **O**

### **Out of bounds**

"Out of bounds" means that the entirety of your ball is laying beyond the boundaries of the golf course or any part of the course. The boundary of the golf course is marked by the committee in charge of the competition or the golf course.

Usually, if your ball is out of bounds, you must play the ball, under penalty of one stroke, as nearly as possible at the spot from which the original ball was last played. However you should refer to the rules for your particular course.

## **P**

### **Par**

The par value for a golf course is the predetermined number of strokes that a scratch or zero handicap golfer needs to play a hole, a round (the sum of the pars of the played holes), or a tournament (the sum of the pars of each round).

A golfer's score is compared with the par score. If a course has a par of 72 and a golfer takes 76 strokes to complete the course, the reported score is +4, or four over par, taking four shots more than par to complete the course. If a golfer takes 69 strokes, their reported score is -3, or three under par.

## **S**

### **Stroke play**

Your TomTom Golfer can be used for normal stroke play, also known as medal play. This involves counting the total number of strokes taken on each hole during a round, or series of rounds. The winner is the player who has taken the fewest number of strokes over the course of the round, or rounds.

## **W**

### **Water hazard**

Water hazards are usually natural obstacles that add difficulty to a golf course, though on brand new courses they can of course be man-made. A water hazard may typically be a stream or pond, positioned next to the fairway or across a fairway, forcing the player to hit the ball over the water hazard.

# Addendum

---

## Warnings & Indications for use

### Indications for use

TomTom Golfer counts steps, calories burned, distance walked, active time, and sleep time. These metrics will assist you in maintaining an active lifestyle.

### Warnings

#### General warnings for TomTom Golfer

- The use of this product while golfing might distract you from your surroundings.
- TomTom Golfer is not a medical device and should not be used for diagnostics or treatment. Always consult a physician before starting an exercise program.
- This is not a toy. This product and its accessories contain small parts, which can be a choking hazard. Please keep away from children. If ingestion of the battery occurs, seek immediate medical assistance.
- Access to the TomTom Golfer app is required in order to use some features of this product.

#### SAFETY NOTICE

- This product contains a lithium polymer battery that cannot be accessed or replaced. Keep the TomTom Golfer out of the reach of children. If you suspect that someone has swallowed or inserted the watch module seek immediate medical help as serious injury may occur.

### How TomTom uses your information

Information regarding the use of personal information can be found at:

[tomtom.com/privacy](https://tomtom.com/privacy).

### TomTom Golfer App

Access to the TomTom Golfer app is required in order to use some features of this product.

### Battery and Environmental information

#### Your device

Do not disassemble, crush, bend, deform, puncture, or shred your device. Do not use it in a humid, wet and/or corrosive environment. Do not put, store, or leave the device in a high temperature location, in direct sunlight, in or near a heat source, in a microwave oven, or in a pressurized container, and do not expose it to temperatures over 60°C (140°F) or below -20°C (-4°F).

Avoid dropping the device. If the device is dropped and you suspect damage, please contact customer support. Use the device only with the chargers, cradles, or USB cables provided. For TomTom approved replacements, go to [tomtom.com](https://tomtom.com).

#### Device battery (Non-replaceable)

This product contains a lithium polymer battery.

Do not modify or re-manufacture the battery. Do not attempt to insert foreign objects into the battery, or immerse or expose to water or other liquids. Do not expose the battery to fire, explosion, or other hazard.

Do not short circuit a battery or allow metallic conductive objects to contact battery terminals.

Do not attempt to replace or remove the battery yourself unless the user manual clearly indicates that the battery is user replaceable.

User replaceable batteries must only be used in systems for which they are specified.

**Caution:** Risk of explosion if the battery is replaced by an incorrect type.

If you have a problem with the battery, please contact TomTom Customer Support.

The stated battery life is the maximum possible battery life which is based on an average usage profile and can only be achieved under specific atmospheric conditions. To prolong the battery life, keep the device in a cool, dry place and follow the tips specified in this FAQ: [tomtom.com/batterytips](http://tomtom.com/batterytips).

Failure to follow these guidelines may cause the battery to leak acid, become hot, explode or ignite and cause injury and/or damage. Do not attempt to pierce, open, or disassemble the battery. If the battery leaks and you come into contact with the leaked fluids, rinse thoroughly with water and seek medical attention immediately. Charging will not occur at temperatures below 32 °F / 0 °C or over 113 °F / 45 °C.

### Battery waste disposal

THIS BATTERY MUST BE RECYCLED OR DISPOSED OF ACCORDING TO LOCAL LAWS AND REGULATIONS AND ALWAYS BE KEPT SEPARATE FROM HOUSEHOLD WASTE. THIS HELPS PRESERVE THE ENVIRONMENT.



### WEEE - e-waste disposal

In the EU/EEA, this product is marked with the separate collection symbol on its body and/or packaging as required by Directive 2012/19/EU (WEEE). This product shall not be treated as household waste or be disposed of as unsorted municipal waste. You can dispose of this product by returning it to the point of sale or bringing it to your local municipal collection point for recycling.

Outside of the EU/EEA, the separate collection symbol may not have the same meaning. More information about national recycling options can be requested from a responsible local authority. It is the responsibility of the end user to comply with local law when disposing of this product.



### Battery operating temperatures

Operating temperatures: -20 °C (-4 °F) to 60 °C (140 °F). Do not expose to temperatures beyond this.

### CE mark and Radio Equipment Directive for TomTom Golfer



This device can be used in all EU Member States. The Bluetooth frequency bands in which this device operates are 2402MHz - 2480MHz and the maximum radio frequency emission power within these bands is -3.41dBm.

TomTom hereby declares that the radio equipment type TomTom Golfer 2 and TomTom Golfer 2 SE GPS Navigation system is in compliance with Directive 2014/53/EU. The full text of the EU declaration of conformity is available at the following internet address:  
[http://www.tomtom.com/en\\_gb/legal/declaration-of-conformity/](http://www.tomtom.com/en_gb/legal/declaration-of-conformity/)

Triman logo



FCC information for the user



THE DEVICE COMPLIES WITH PART 15 OF THE FCC RULES

#### **Federal Communications Commission (FCC) Statement**

This equipment radiates radio frequency energy and if not used properly - that is, in strict accordance with the instructions in this manual - may cause interference to radio communications and television reception.

Operation is subject to the following two conditions: (1) this device may not cause harmful interference and (2) this device must accept any interference, including interference that may cause undesired operation of the device.

This device has been tested and found to comply with the limits for a Class B digital device, pursuant to part 15 of the FCC rules. These limits are designed to provide reasonable protection against harmful interference in a residential installation. This equipment generates, uses and can radiate radio frequency energy and, if not installed and used in accordance with the instructions, may cause harmful interference to radio communications. However, there is no guarantee that interference will not occur in a particular installation. If this equipment does cause harmful interference to radio or television reception, which can be determined by turning the equipment off and on, the user is encouraged to try to correct the interference by one or more of the following measures:

- Reorient or relocate the receiving antenna.
- Increase the separation between the equipment and receiver.
- Connect the equipment into an outlet on a circuit different from that to which the receiver is connected.
- Consult the dealer or an experienced radio/TV technician for help.

Changes or modifications not expressly approved by the party responsible for compliance could void the user's authority to operate the equipment.

FCC ID: S4L4REM

IC ID: 5767A-4REM

#### **FCC RF Radiation Exposure Statement**

The transmitters within this device must not be co-located or operating in conjunction with any other antenna or transmitter.

### **Responsible party in North America**

TomTom, Inc., 2400 District Avenue, Burlington, MA 01803

Tel: 866 486-6866 option 1 (1-866-4-TomTom)

### **Emissions information for Canada**

Operation is subject to the following two conditions:

- This device may not cause interference.
- This device must accept any interference, including interference that may cause undesired operation of the device.

Operation is subject to the condition that this device does not cause harmful interference.

This Class B digital apparatus complies with Canadian ICES-003. CAN ICES-3(B)/NMB-3(B)

The Country Code Selection feature is disabled for products marketed in the US or Canada.

Equipment is certified to the requirements of RSS-247 for 2.4 GHz.

### **IMPORTANT NOTE**

IC Radiation Exposure Statement:

- This equipment complies with IC RSS-102 radiation exposure limits set forth for an uncontrolled environment.
- This device and its antenna(s) must not be co-located or operating in conjunction with any other antenna or transmitter.

This equipment complies with IC radiation exposure limits set forth for an uncontrolled environment. End users must follow the specific operating instructions for satisfying RF exposure compliance. To maintain with IC RF exposure compliance requirements, please follow the operation instructions in this manual.

### **Certification information for the user**

To see certification information on your watch, press down from the clock screen to open the Settings menu. Select **Standards** and then press right to scroll through the certification information.

### **Accessories supplied with this device**

- Charging cable
- Quick Start Guide
- Legal Leaflet

### **Country of origin**

The TomTom Golfer is made in China.

### **Model numbers**

4REM

### **This document**

Great care was taken in preparing this document. Constant product development may mean that some information is not entirely up to date. The information in this document is subject to change without notice.

TomTom shall not be liable for technical or editorial errors or omissions contained herein, nor for incidental or consequential damages resulting from the performance or use of this document. This document contains information protected by copyright. No part of this document may be photocopied or reproduced in any form without prior written consent from TomTom N.V.

# Copyright notices

---

© 1992 - 2017 TomTom. All rights reserved. TomTom and the "two hands" logo are trademarks or registered trademarks of TomTom N.V. or one of its subsidiaries. Please see [tomtom.com/legal](http://tomtom.com/legal) for limited warranty and end user license agreements applying to this product.

© 1992 - 2017 TomTom. All rights reserved. This material is proprietary and the subject of copyright protection and/or database rights protection and/or other intellectual property rights owned by TomTom or its suppliers. The use of this material is subject to the terms of a license agreement. Any unauthorized copying or disclosure of this material will lead to criminal and civil liabilities.

Linotype, Frutiger and Univers are trademarks of Linotype GmbH registered in the U.S. Patent and Trademark Office and may be registered in certain other jurisdictions.

MHei is a trademark of The Mono type Corporation and may be registered in certain jurisdictions.

The software included in this product contains AES code under Copyright (c) 1998-2008, Brian Gladman, Worcester, UK. All rights reserved.

License terms:

The redistribution and use of this software (with or without changes) is allowed without the payment of fees or royalties provided that the following conditions are adhered to:

Source code distributions include the above copyright notice, this list of conditions and the following disclaimer.

Binary distributions include the above copyright notice, this list of conditions and the following disclaimer in their documentation.

The name of the copyright holder is not used to endorse products built using this software without specific written permission.

**Bluetooth®**



The **Bluetooth®** word mark and logos are registered trademarks owned by Bluetooth SIG, Inc. and any use of such marks by TomTom is under license. Other trademarks and trade names are those of their respective owners.

**Wi-Fi®**

Wi-Fi® is a registered trademark of Wi-Fi Alliance®. The Wi-Fi CERTIFIED™ Logo is a certification mark of Wi-Fi Alliance®.

**Android, Google Play and the Google Play logo**

Android, Google Play, and the Google Play logo are trademarks of Google Inc.

**Apple, iPhone, iPad, iPad Air, iPad Pro, iPad mini, iPod, iPod touch, Mac and the "Download on the App Store" badge**

Apple, iPhone, iPad, iPad Air, iPad Pro, iPad mini, iPod, iPod touch, Mac and the Apple logo are trademarks of Apple Inc., registered in the U.S. and other countries. App Store is a service mark of Apple Inc.