

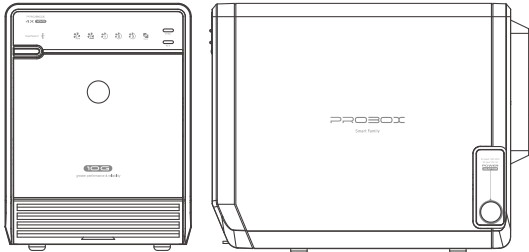


# 4x HDD Enclosure

with single mode function

## USB 3.1 Gen-II / Type-C

For 3.5" SATA HDD



### USER'S MANUAL

Office website | Online forum  
www.mediasonicusa.com | http://forum.mediasonic.ca/

HF2-SU31C / Rev.01

Brief Notes | Contents | Understanding Sync Button  
Understanding Interface | Quick Installation Guide  
Initialization | Troubleshooting

### Brief Notes

#### Operation System

Windows 7 / Windows 8.1 / Windows 10  
Mac OS X 10.12.5 or later

#### Hot-plug for USB-C interface

#### USB 2.0 / 3.0 / 3.1 compatible \*

\* Additional cable required, cable converter adapters not recommended

#### Smart Fan

Smart fan controlled by the built-in thermal sensor and it comes with 2 modes (auto / manual) and 3 levels of speed:

Level 1	Low	below 45°C	1000rpm~1400rpm
Level 2	Medium	45°C ~ 54°C	1500rpm~1900rpm
Level 3	High	higher than 55°C	2400rpm~2800rpm

#### Warning

USB port of your PC must support power-off function so that the device would go to sleeping mode. Setting up motherboard's (power management ) in S3 is strongly recommended. For more details, please refer to user guide of motherboard BIOS setting.

### Contents

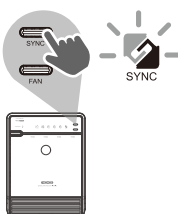
Main Device x 1	USB 3.1 Gen-II type C to C Cable x 1
Quick Installation Guide x 1	Power Cord x 1
Screws for 3.5" HDD x 8	Power Adapter x 1
Screw Driver x 1	HDD Handle x 4

### Understanding Sync Button

**1** Make sure enclosure is connected to a computer that is ON, by Type-C. If not enclosure will just turn off.

**2** Set the power Sync mode to your preference.

\*These are the Power Sync modes:



#### SYNC Button

##### Orange LED

When PC is turned off, the enclosure will go into sleeping mode  
When you turn on the PC, the enclosure will turn on automatically

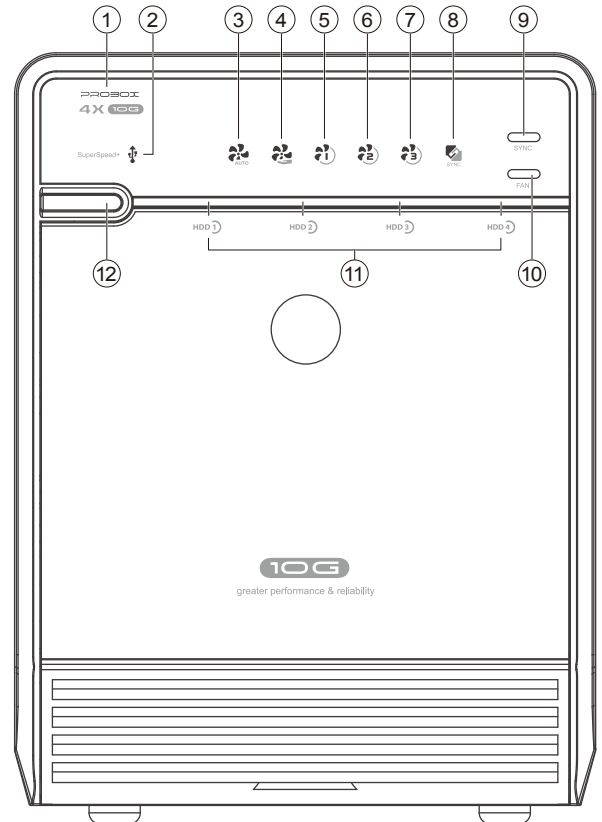
##### OFF(No LED)

No Power sync. Enclosure stays on when you turn PC off

\*Hold the Sync button to switch between them

## Understanding Interface

### 1 Front View



#### ① Power Indicator Status

Blue light | Power on  
Orange light | Sleep mode

#### ② USB Status

Link interface use

#### ③ Smart Fan automatic mode

#### ④ Smart Fan manual mode

#### ⑤ Fan speed / level 1

#### ⑥ Fan speed / level 2

#### ⑦ Fan speed / level 3

#### ⑧ Synchronization comes in 2 modes

Orange light | When the PC is off, the device goes to sleep mode.  
Off | Synchronization is off.

#### ⑨ Synchronization mode button

\* Switch power Sync mode ( no power Sync / Hibernation )

#### ⑩ Smart Fan button

Controls auto & manual modes and fan speed from level 1 to level 3.

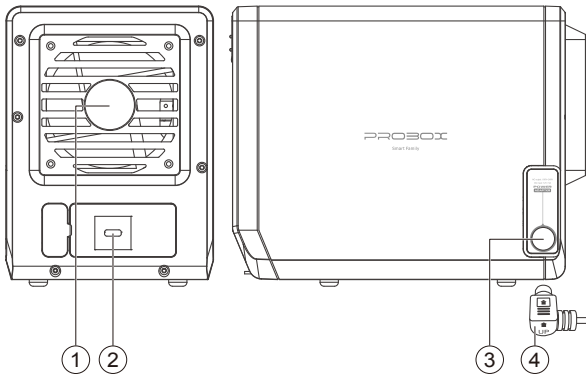
#### ⑪ HDD1 /HDD2 /HDD3 /HDD4 Status

Blue light | Active  
Blue Blinking light | Load & read

#### ⑫ Power button

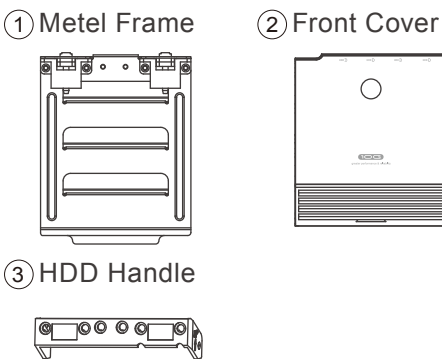
It needs to be pressed and held for 3 seconds to power off. This design prevents accidental power off.

## 2 Rear View | Side View



- ① Fan
- ② USB-C port
- ③ DC Jack
- ④ DC Power

## 3 Internal Accessories



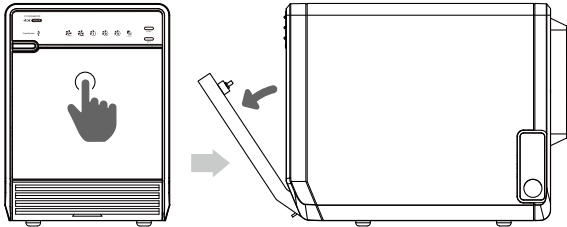
- ① Metal Frame
- ② Front Cover



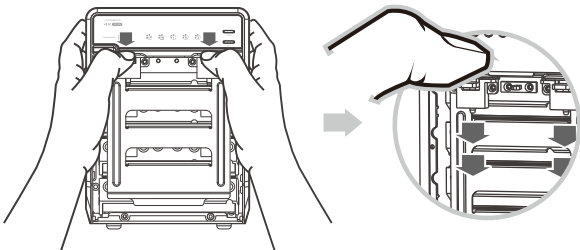
- ③ HDD Handle

## Quick Installation Guide

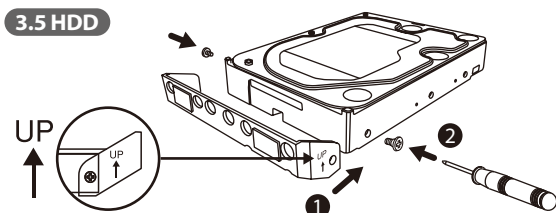
- 1** Press the circular depression to open the cover.



- 2** Press down the 2 tabs to detach the metal frame and remove it.

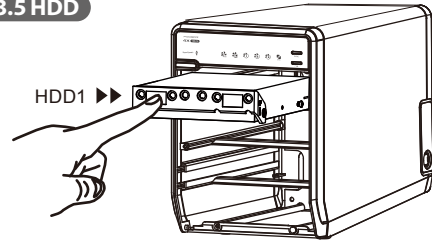


- 3** Please use the provided handles or tray to secure the 4 HDDs with screws



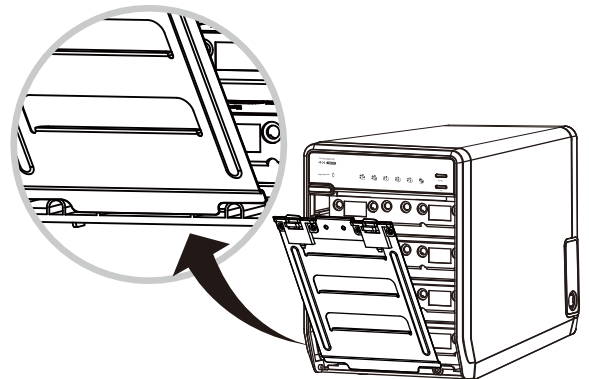
- 4** Slide 4 HDDs into the chassis and make sure they are securely installed in order from top to bottom

### 3.5 HDD



- Make sure the HDD is securely installed first at all times. Otherwise the PC may not recognize the device.

- 5** Adjust the metal frame that was removed in Step 2. Please make sure the bottom of the frame stays inside the track before closing the cover.



- 6** Connect the power supply to the device, plug in USB-C cable in the rear panel and power on the device.

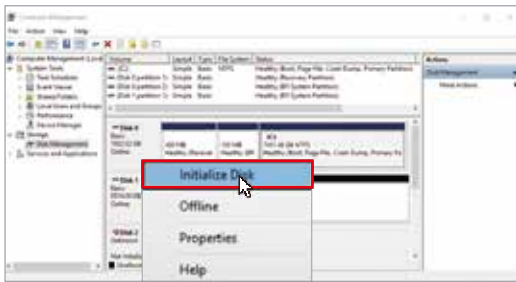
# Initialization

## 1 Windows



If the HDD is uninitialized, you may have to initialize it by doing steps as followed: At first click "Start", "Execute" on your PC and key in "diskmgmt.msc". After that please press "RETURN" key.

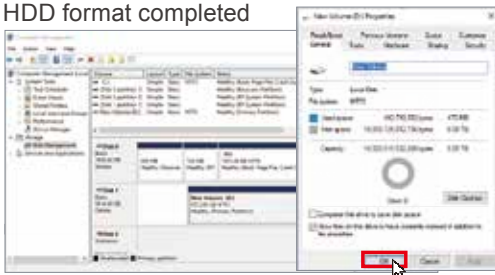
### 1. Start disk initialization



### 2. Create new partition and format disk



### 3. HDD format completed

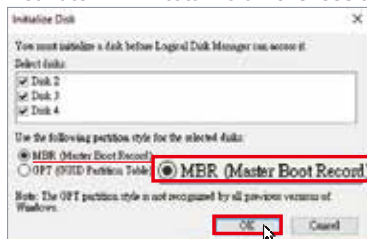


## 2 Start disk initialization

Please enable GPT if the total capacity is more than 2TB and enable MBR if the total capacity is less than 2TB. Activate GPT if total volume is more than 2TB



Activate MBR if total volume is less than 2TB



## 3 Mac OS X

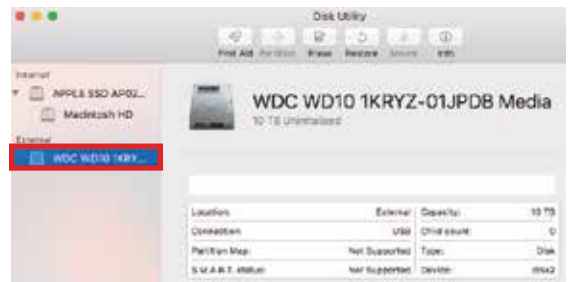
### 1. Click Disk Utility icon



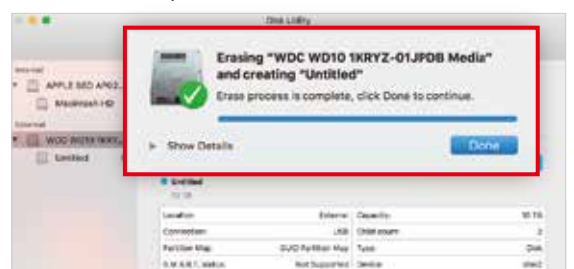
### 2. HDD initialize



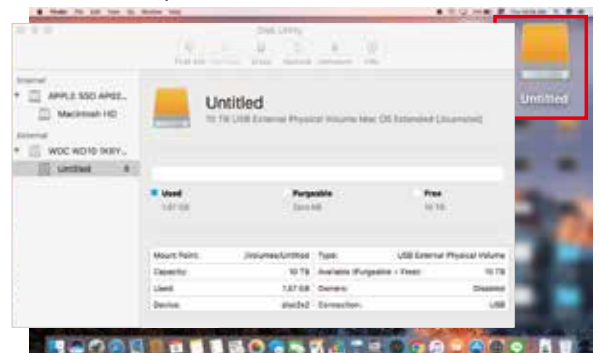
### 3. Click "Erase"



### 4. HDD format in process



### 5. Format completed

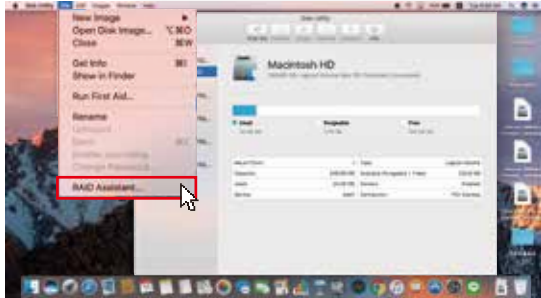


#### 4 S/W RAID 0 (Striping) / OS: Mac OS X

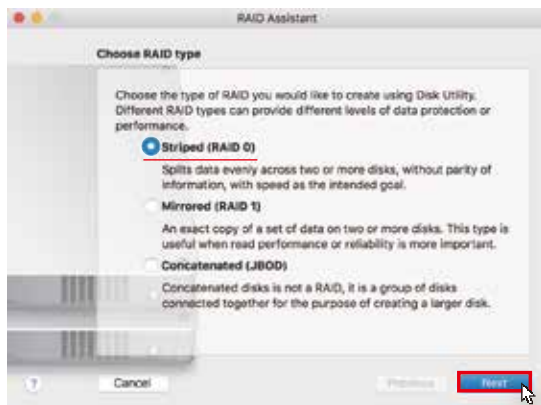
1. Click Disk Utility icon



2. Click "RAID Assistant"



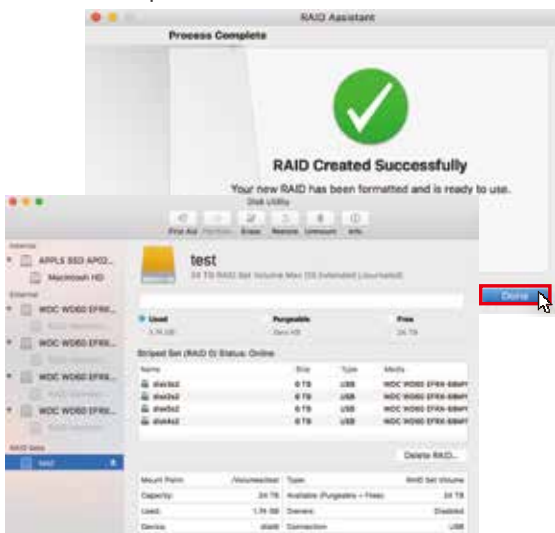
3. Click "Striped (RAID 0)"



4. Click "Create"



5. Format completed



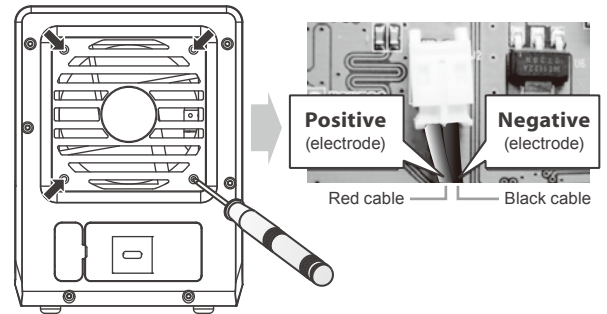
## Troubleshooting

**1** If the device (4 HDDs installed) is connected to the PC with Type-C cable icon does not come out in 4, please check if the USB-C interface card supports Port Multiplier.

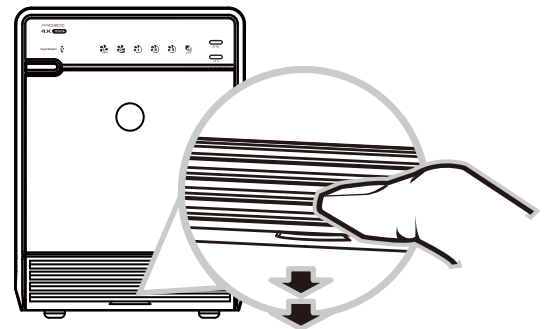
**2** If the device (4 HDDs installed) takes too long to detect HDD, please check if the HDD is securely installed.

**3** If there is noise with the fan, unscrew and take out the fan cover, pull out the power cord, clean the fan and assemble it back.

**4** If the noise is still present, replace the fan. The fan size is 80x80x20mm 2 pins.

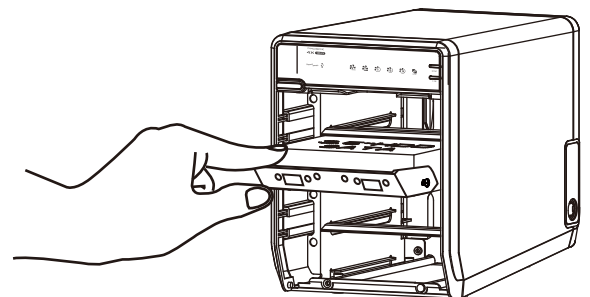


**5** If you forget to attach the metal frame before you close the cover, simply press the tab on the bottom of the cover. The cover will slowly release and open outwards. Please do not attempt to pull the cover with something sharp.



**6** Operation Environment: ■ Temperature 0°C~ 60°C  
■ Humidity 0%~ 90% R.H.

**7** To take the the HDD out from the device, slightly press down the handle and pull it out.



This manual is subject to change without notice | Made In Taiwan