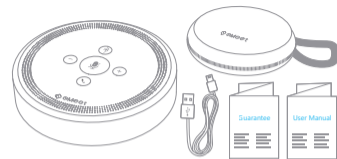


OfficeCore M1

# User Manual



## Packaging Contents



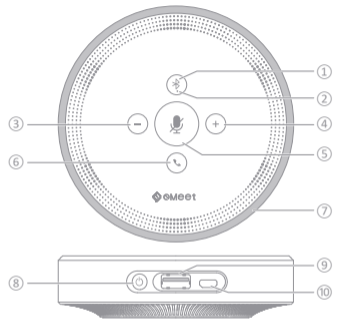
## Features

Thank you for purchasing eMeet product. OfficeCore M1 is the perfect solution for conference calls with its compact design and outstanding sound quality.

- 360° omni-directional audio pick up and 8M(26ft) Far-field voice recognition
- Built-in VoicelA™ algorithm to ensure high quality sound
- Plug and play via Bluetooth or USB
- 12 hours talk time, 20 hours music playback and 1 month standby time, fully charge 2-3 iPhone 7
- Compact and portable design, take your business trip anywhere at any time
- Supports internet calls, such as Skype, Google Hangout, Microsoft Lync, Cisco, Avaya, etc

1

## Overview

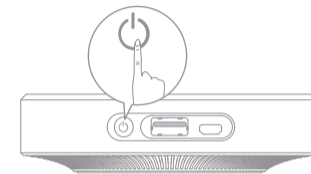


- ① Bluetooth Pairing
- ② Bluetooth / USB light
- ③ Volume down
- ④ Volume up
- ⑤ Mic mute/ unmute
- ⑥ Answer/ drop call
- ⑦ LED indication
- ⑧ Power on/ off
- ⑨ USB output
- ⑩ Micro USB input

2

## Using Guide

- Power ON/OFF



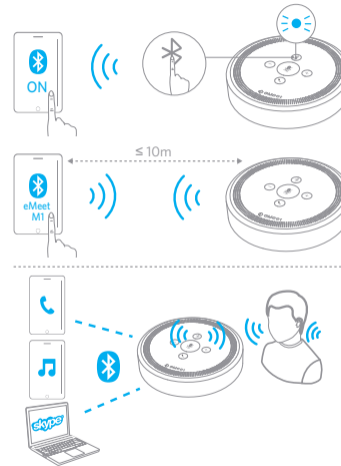
**Power on:** Press and hold the power button for 2 seconds until the LED indication turns blue.

**Power off:** Press and hold the power button for 2 seconds until the LED indication turns blue.

**Checking battery level:** Press the power button and the LED indication turns green to show the current battery level.

3

- Connecting via Bluetooth



4

### Bluetooth Pairing Mode

M1 enters Bluetooth pairing mode automatically for the first use. Bluetooth light fast flashes blue. Press and hold Bluetooth button for 3 seconds to switch Bluetooth device. Bluetooth light flashes fast.

### Pairing with Bluetooth:

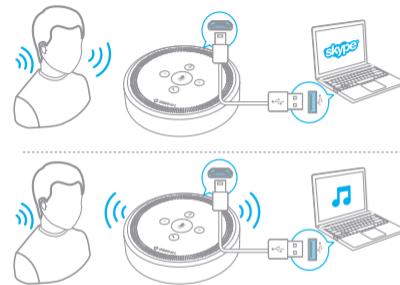
Enable Bluetooth of your device and search Bluetooth devices available. Select "eMeet M1" from the list and start the pairing. If a PIN is requested, enter "0000". Bluetooth light is solid blue when the connection is completed successfully.

### Phone and music via Bluetooth:

Make phone calls and play music via Bluetooth once connected.

5

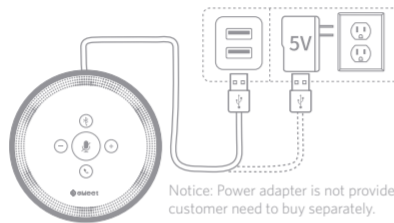
• USB



**Entering USB mode:** Connect M1 to your device by using a USB cable and USB light turns solid green.

**Phone and music via USB:** Make phone calls and play music once connected via USB cable.

• Charging and Recharging



Notice: Power adapter is not provided, customer need to buy separately.

**Recharging M1:** Recharge M1 by using a USB charger with DC 5V output or by connecting a laptop. While recharging by a laptop, you can make a call via M1 at the same time. Power light is solid red while recharging M1.

**Charging your smartphone:** Use M1 as a portable battery to charge your smartphone.

Technical Data

Speaker Rated Output Power	3W RMS
Frequency Response:	20Hz-20KHz
Signal/Noise Ratio:	≥80dB
Bluetooth® Version	V4.1
Bluetooth® Range	10m
Mic Sensibility:	26dBFS
Mic Frequency Response:	100Hz-10KHz
Mic Direction:	360° omni-directional
Battery:	3.6V/5200mAh
Charging Time:	3-4 hours
Play Time:	12 hours (call); 20 hours (music, varies by content and volume level)
Recharging Input:	5V/2A
Dimension:	110x110x29mm
Weight:	625 g

Troubleshooting

Symptom	Possible Causes	Solution
Fail to turn on	Low battery or empty power	Recharge
No sound	Disconnected or low volume	Check the connection or adjust volume of connected device
Distorted or unclear sound	Volume level too high or too low	Adjust volume of connected device
Fail to talk	Wrong USB cable	Use original USB cable
Fail to recharge M1	Malfunction of charger or fully recharged	Use a proper charger

Warning

- Do not disassemble or repair the product yourself. Always ask for help from local dealer if necessary.
- To preserve battery lifespan, fully recharge the product when not in use for a long period of time or at low battery level.
- Never place the product near naked flames or other heat sources, including direct sunlight.
- Danger of explosion if batteries are incorrectly replaced. Replace only with the same or equivalent type.
- The product should be placed in a dry, ventilated place indoor. Never expose the product and accessories to rain or water. Never cover the ventilation slots or other openings on the product.
- To protect environment, exhausted batteries should be disposed of properly or return to the manufacturer.



Use this product in the areas of an altitude of no more than 2000 meters only.



Use this product in the non-tropical regions only.

\* The Bluetooth® word mark and logos are registered trademarks owned by Bluetooth SIG, Inc.

FCC

This equipment has been tested and found to comply with the limits for a Class B digital device, pursuant to Part 15 of the FCC Rules. These limits are designed to provide reasonable protection against harmful interference in a residential installation. This equipment generates uses and can radiate radio frequency energy and, if not installed and used in accordance with the instructions, may cause harmful interference to radio communications. However, there is no guarantee that interference will not occur in a particular installation. If this equipment does cause harmful interference to radio or television reception, which can be determined by turning the equipment off and on, the user is encouraged to try to correct the interference by one or more of the following measures:  
 -- Reorient or relocate the receiving antenna.  
 -- Increase the separation between the equipment and receiver.  
 -- Connect the equipment into an outlet on a circuit different from that to which the receiver is connected.  
 -- Consult the dealer or an experienced radio/TV technician for help.  
 Changes or modifications not expressly approved by the party responsible for compliance could void the user's authority to operate the equipment.

This device complies with part 15 of the FCC Rules. Operation is subject to the following two conditions:  
 (1) This device may not cause harmful interference, and  
 (2) This device must accept any interference received, including interference that may cause undesired operation.