

COSORI

High Speed Personal Blender

Model No.: C011-PB



COSORI SUPPORT:

Mon - Fri 9:00 AM - 5:00 PM PST

(888) 402-1684 | support@cosori.com

Thank You.

Thank you for purchasing the C011-PB Personal High Speed Blender by Cosori. We are dedicated to providing our customers with high quality products to live life tastefully. Should you have any questions or concerns about using your new product, feel free to reach out to our helpful customer support team at (888) 402-1684 or by email at support@cosori.com. We hope you enjoy your new product!

Table of Contents

Safety Information	5
Function Diagram	7
Set-up & Operation	8
Helpful Hints for Blending	10
Care & Maintenance	10
Troubleshooting	11
Specifications	12
Warranty	12
Customer Support	13

Package Contents

- 1 x Cosori High Speed Personal Blender
- 1 x Blade attachment
- 1 x Storage lid
- 1 x Travel lid
- 2 x 24 oz Containers
- 1 x 12 oz Container
- 1 x User manual

Safety Information

IMPORTANT SAFEGUARDS:

Please read, understand, and comply with all the instructions provided in this manual before using the device. Failure to comply with the instructions given in this manual and/or using the device in ways other than the ones mentioned in this manual may result in serious injury and/or damage to the product.

Safety Use & Care

- Read all instructions before using this appliance.
- Check if the local power supply voltage matches the voltage indicated on this appliance before use.
- **DO NOT** place any part of this appliance on or near a hot gas, electric burner, or in a heated oven.
- **DO NOT** let cord hang over edge of table or counter.
- **DO NOT** operate any appliance with a damaged cord or plug or after the appliance malfunctions or has been damaged in any manner. Contact customer support immediately if the appliance malfunctions.
- Avoid contact with moving parts.
- **DO NOT** attempt to activate the motor without using the container.
- **DO NOT** leave foreign objects, such as spoons, forks, knives in the container as this will damage the blades and other components when operating the appliance; doing so may also cause injury.
- Handle this appliance with care; the blades are sharp.
- **DO NOT** use attachments from other kitchen appliances on this blender, doing so may cause fire, electric shock or injury.
- The ingredients in the container should not be exceed the MAX line.
- When making nut butters or oil based foods, do not process for more than one minute after the mixture starts circulating. Over-processing can cause dangerous overheating.
- Turn all controls off by pressing the 'Start/Stop' button and unplug the blender when it is not in use, before putting on or taking off parts, and before cleaning.
- Never leave the appliance unattended while it is running.
- **DO NOT** immerse the blender base or power cord in water or other liquids, doing so may cause electric shock or injury.
- Always operate blender with two hands to stabilize the appliance.
- To prevent overheating, never allow the blender to run for more than one minute at a time. Doing so may cause permanent damage to the motor. If the motor does overheat, unplug the appliance and allow it to cool for at least one hour before resuming use.
- **DO NOT** blend carbonated beverages. Built up pressure may cause the container to burst upon opening and may result in injury.
- **DO NOT** blend hot liquids, always start with room temperature or cold ingredients when blending mixtures. Blending hot liquid may cause pressure to build up in the container, which can erupt and result in injury.
- **DO NOT** allow mixtures to sit in the container for long periods of time. Fermented foods can cause pressure to build up inside the container, which can lead to ingredients bursting or spraying out upon opening.
- If necessary, use a rubber spatula or wooden spoon to remove food from the sides of the container. Make sure to turn the power off and unplug the blender from the electrical outlet before using the spatula.
- **DO NOT** blend non-food items in the blender.
- **DO NOT** open or remove the container until the blade stops running completely to avoid hazard or damage to the product.

- **DO NOT** put hands or other objects into the blender base while the blender is operating.
- Children over the age of 8 and persons with disabilities are able to use this appliance under close supervision. **DO NOT** allow children to play with the blender.
- **DO NOT** use outdoors.
- **DO NOT** attempt to operate the blender if the blade assembly is not properly attached to a container.
- **DO NOT** attempt to use the blade assembly on another blender.
- **DO NOT** replace the blade assembly using the blades from another blender.
- **DO NOT** attempt to disassemble this device for any reason. If your blender is broken or no longer functions properly, immediately discontinue use and contact customer support.
- Always use caution when replacing the blade assembly after washing.

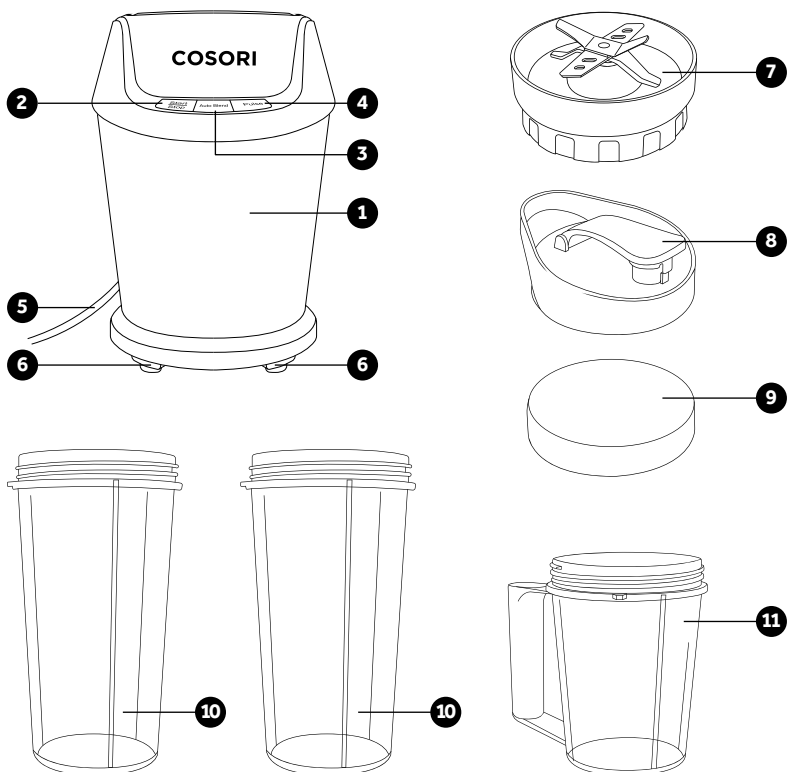
NOTE FOR PLUG:

This appliance has a polarized plug (one blade is wider than the other). To reduce the risk of electric shock, this plug will fit in a polarized outlet only one way. If the plug does not fit fully in the outlet, reverse the plug. If it still does not fit, contact a qualified electrician. Do not modify the plug in any way.

SAVE THESE INSTRUCTIONS

HOUSEHOLD USE ONLY

Function Diagram



Product Diagram

1. Blender Base
2. Start/Stop Button
3. Auto Blend Button
4. Pulse Button
5. Power Cord
6. Suction Cup Feet
7. Blade Assembly
8. Travel Lid
9. Storage Lid
10. 24 oz Containers
11. 12 oz Container

Control Panel

Button	Function
Start/Stop	Starts or stops the blender.
Auto Blend	Pulses ingredients in 3 second intervals with 1 second breaks in between to achieve a smooth consistency; automatically shuts off after pulsing ingredients 10 times.
Pulse	Press and hold the pulse button to blend ingredients at a high speed. Release at the desired consistency.

Set-Up

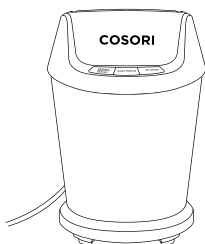
Before Use

1. Remove all packaging and labels from the blender. Inspect the blender for damage and check to see if all parts are included.
2. Wash all containers, lids, and blade attachment with warm soapy water. Thoroughly rinse all parts with water and allow them to dry completely.

NOTE:

The containers, lids, and blade assembly are dishwasher-safe; it is recommended to place them on the top rack for washing.

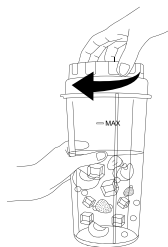
Operation



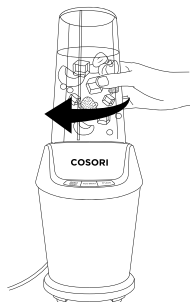
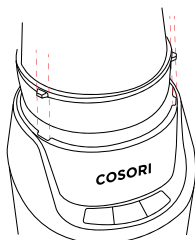
1. Place the blender base on a flat, level surface.



2. Fill either the 24 oz. or 12 oz. container with ingredients. Be sure not to fill past the MAX line.

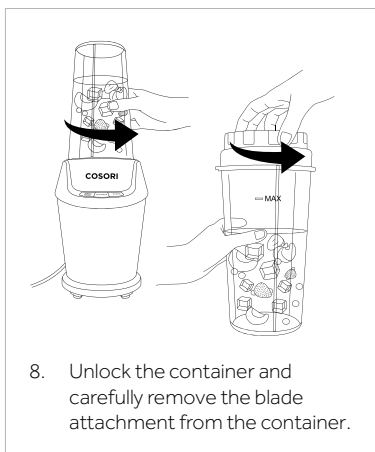
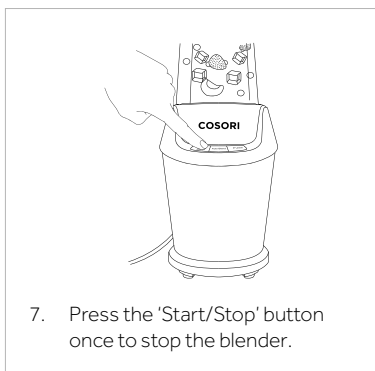


3. Screw on the the blade assembly, making sure it is secured tightly onto the container.



4. Place the container onto the blender base, aligning the tabs on the container with the slots on the base. Lock the container into place by twisting it clockwise so that the tabs on the container are secured to the base. You will hear a clicking sound that indicates the container is secure.

5. Plug in the blender to a powered electrical outlet. The blender will beep, indicating that it is connected to a power source.



9. Serve your culinary creation! Place the travel lid on the container to take your drink to-go, or place the storage lid on the container to save for later.

10. Immediately clean the blade assembly and container used to blend food after each use.

NOTE:

- **DO NOT** operate the blender for more than one minute at a time; allow the blender to cool down for at least 10 minutes when blending multiple mixtures.
- **DO NOT** blend hot liquids.
- **DO NOT** attempt to remove the container while the blender is running.
- Although the blender is equipped with suction cup feet, it is recommended to hold the blender steady with two hands for added stability while blending mixtures.

Helpful Hints for Blending

- Always make sure the blade attachment is secured to the container before blending.
- When making nut butters or oil based foods, do not process for more than one minute after the mixture starts circulating. Over-processing can cause the blender to overheat and possibly malfunction.
- When blending cold drinks using ice (i.e. margaritas or smoothies), it is recommended that the ice cubes are ½ inch and there should be a 2:3 ratio of ice to liquid. You can also use frozen fruits as a replacement for ice to add extra flavor to your drinks.
- Add liquids in small increments until you have reached your desired consistency. Adding too much liquid can make your mixtures too runny, while adding too little liquid will make your mixtures too thick.
- Use the 12 ounce container for best results when grinding food.
- Make sure to use no more than 3.5 ounces (100 g) of ingredients when grinding foods like coffee beans.
- If necessary, use a rubber spatula or a wooden spoon to remove food from the sides of the container. Make sure to turn the power off and unplug the blender from the electrical outlet before using the spatula.
- Allow the blender to rest for at least 10 minutes in between uses when mixing multiple mixtures.

Care & Maintenance

1. After each use, rinse out any remnants of the mixture with clean water. If necessary, use a sponge or soft-bristled cleaning brush to scrub off any tough food stains.
2. Pour about 6-10 fl.oz. (200-300 mL) of warm water and a couple drops of liquid dish detergent into the container and reassemble the blender with the blade assembly and container.
3. Press the 'Start/Stop' button to turn on the blender. Allow the blender to run for about 10 seconds.
4. Turn off the unit, remove the container from the base and rinse the container under running water.
5. If necessary, wipe down the base with a damp clean cloth, then immediately dry with a clean soft cloth. **DO NOT** immerse the base in water or other liquids to clean the blender.
6. Thoroughly dry all parts of the blender, then reassemble the unit again. Store the blender in a cool, dry place.

NOTE:

- All parts of the blender, except for the base, are dishwasher-safe. You can also hand-wash the containers, lids, and blade assembly.
- The blades are sharp. Always use caution when cleaning the blade assembly.
- Never use abrasive brushes or cleaning pads on the any parts of the blender.

Troubleshooting

Problem	Cause	Solution
Blender stops working after long periods of use.	Blender has overheated.	Unplug the blender and allow it to cool down for 10-20 minutes before blending.
Food spills out of the container while blending.	Blade assembly is not secured properly.	Stop the blender, then make sure the blade assembly is properly attached.
When blending on a high speed, food does not circulate or is unevenly chopped.	There may be a trapped air bubble inside of the mixture.	Stop the blender and open up the container. Use a rubber spatula or wooden spoon to mix ingredients, then resume blending.
	The amount of food in the blender exceeds the MAX line.	Reduce the amount of ingredients in your cup by pouring or scooping some of the contents into a different container.
Appliance cannot turn on.	Plug is loose.	Make sure the plug is connected properly to a powered socket.
	Blade assembly is not properly attached to the base.	Make sure the blade attachment is properly aligned inside the housing.
Food does not mix well.	The wrong setting is being used.	Pulse ingredients for chopped foods. Use the 'Auto Blend' feature or the 'Start/Stop' button to evenly blend foods.
Food is chopped too finely, or is too watery.	Food has been blended for too long or too much liquid has been added.	Use short pulses for best results.
Blender does not turn off after pressing 'Start/Stop'.	Unit is malfunctioning.	Immediately unplug the blender and call customer service.

Specifications

Power Supply:	AC 120V / 60Hz
Rated Power:	800W
Max Capacity:	24 oz. (700 mL)
Dimensions (HxWxL):	Blender Base: 7.9 x 5.2 x 5.9 in. 24 oz. Container: 7.6 x 4.1 in. 12 oz. Container: 5.2 x 4.1 x 6 in.

Warranty

Cosori warrants all products to be of the highest quality in material, craftsmanship and service for a minimum of 1 year, effective from the date of purchase.

Under the limited warranty, Cosori will replace or refund any product found to be defective due to manufacturer flaws based on eligibility. Refunds will be issued within 30 days of the date of purchase, otherwise, Cosori will replace products determined to be defective for the remaining warranty period. This warranty extends only to personal use and does not extend to any product that has been used for commercial use, rental use, or any other use in which the product is not intended for. There are no warranties other than that expressly set forth with each product. This warranty is non-transferrable. Cosori is not responsible in any way for any damages, losses or inconveniences caused by equipment failure or by user negligence, abuse, or use noncompliant with the user manual or any additional safety, use, or warnings included in the product packaging and manual.

Furthermore, Cosori is not liable for incidental or consequential damages of any nature resulting from the use of this product.

This warranty does not apply to the following:

- Damage due to abuse, accident, alteration, misuse, tampering or vandalism.
- Improper or inadequate maintenance.
- Damage in return transit.
- Unsupervised use by children under 18 years of age.

Cosori and its subsidiaries assume no liability for damage caused by the use of the product other than for its intended use or as instructed above and in the user manual. Some states do not allow this exclusion or limitation of incidental or consequential losses so the foregoing disclaimer may not apply to you. This warranty gives you specific legal rights and you may also have other rights which may vary from state to state.

Customer Support

Should you encounter any issues or have any questions regarding your new product, feel free to contact our helpful Customer Support Team. Your satisfaction is our goal!

CUSTOMER SUPPORT

Cosori Corporation
1202 N Miller St. Suite A
Anaheim, CA 92806

Phone: (888) 402-1684
Email: support@cosori.com

SUPPORT HOURS

Monday - Friday: 9:00 am - 5:00 pm PST

*Please have your order confirmation number ready before contacting customer support.

COSORI

COSORI SUPPORT:

Mon - Fri 9:00 AM - 5:00 PM PST

(888) 402-1684 | support@cosori.com