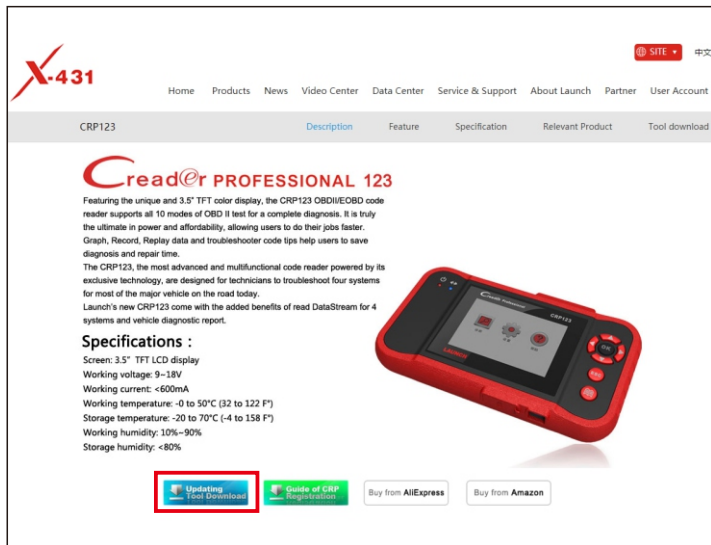


## 1.Go to

[http://eninfo.x431.com/ProductsStd\\_191.html](http://eninfo.x431.com/ProductsStd_191.html)  
and click **Updating Tool Download** icon to download it to computer. See Figure 1;



The screenshot shows the X431 website's product page for the CRP123. The page has a red header with the X431 logo and navigation links. The main content area features the product name 'Creador PROFESSIONAL 123' and a detailed description of its capabilities. A list of specifications is provided on the left, and a high-resolution image of the red diagnostic tool is on the right. At the bottom, there are two buttons: 'Updating Tool Download' (highlighted with a red box) and 'Guide of CRP Registration'. There are also links to purchase the tool from AliExpress and Amazon.

**CRP123**

**Creador PROFESSIONAL 123**

Featuring the unique and 3.5" TFT color display, the CRP123 OBDII/OBD code reader supports all 10 modes of OBD II test for a complete diagnosis. It is truly the ultimate in power and affordability, allowing users to do their jobs faster. Graph, Record, Replay data and troubleshooter code tips help users to save diagnosis and repair time.

The CRP123, the most advanced and multifunctional code reader powered by its exclusive technology, are designed for technicians to troubleshoot four systems for most of the major vehicle on the road today.

Launch's new CRP123 come with the added benefits of read DataStream for 4 systems and vehicle diagnostic report.

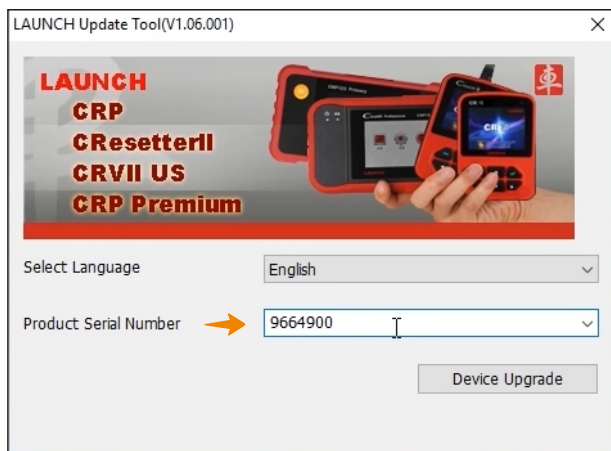
**Specifications :**

- Screen: 3.5" TFT LCD display
- Working voltage: 9~18V
- Working current: <600mA
- Working temperature: -0 to 50°C (32 to 122 F°)
- Storage temperature: -20 to 70°C (-4 to 158 F°)
- Working humidity: 10%~90%
- Storage humidity: <80%

**Updating Tool Download** **Guide of CRP Registration** [Buy from AliExpress](#) [Buy from Amazon](#)

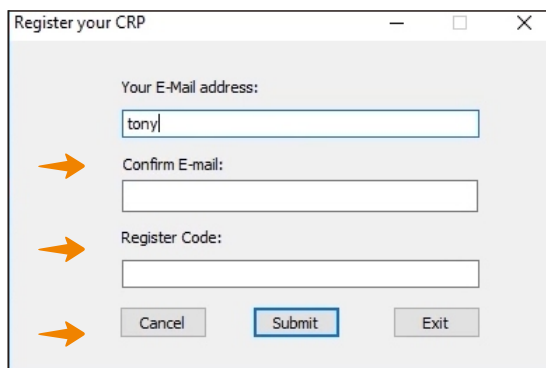
- 2 Run the **.exe** file, and follow the on-screen instructions to install the update tool;
- 3 Launch the program when installed, a screen similar to Figure 2 will appear;

# LAUNCH



(Figure 2)

- 4 In Figure 2, type in the Product Serious Number, which is located at the back of the tool.
- 5 After the serial number is entered, click **Update** to jump to the registration page. Enter the following information and click **Submit** (refer to Figure 3).



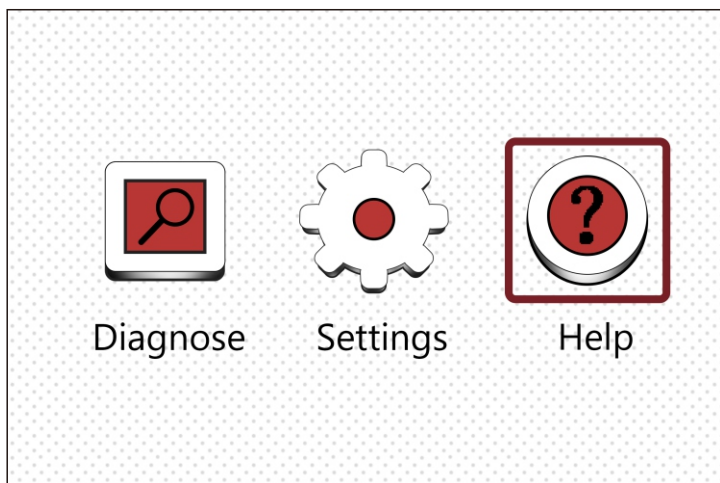
(Figure 3)

# LAUNCH

(if you need the register code, please refer to steps 6-9.)

(if you already have the register code, directly proceed to step 10.)

- 6 The **Register code** can be found in your tool. Connect one side of supplied USB cord to your tool, and the other side on the computer.
- 7 After the tool has powered up and entered the main menu screen, move the highlight bar on the **help** icon (See Figure 4) and press the **OK** button.



(Figure 4)

- 8 Select **Tool Information** (refer to Figure 5) and press the **OK** to enter.

# LAUNCH

## Help

DLC Location Information

DTC Library

Abbreviation

Tool Information

About OBD

Upgrade information

Service Information

4/7 ● -Rec

- 9 The **Register Code** shown in Figure 6 is the Register Code needed in step 5.

## Tool Information

Boot version: V10.01

Displays program version: V02.45

Disgnostic program version: V02.45

Disgnostic library version: V11.49

Serial Number: 966490029838

Register Code: 420063001351

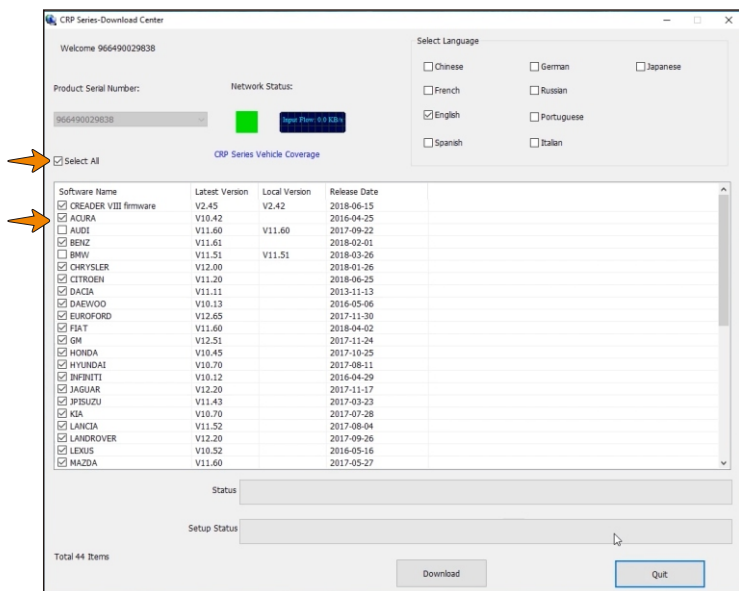
ESC -Exit

(Figure 6)

(Return to step 5 and input the Register Code and then proceed)

# LAUNCH

- 10 Install the TF card from the tool into the supplied USB TF card adaptor and insert into the USB port of the computer
- 11 Reopen the update tool, select the updates you would like to perform or click "Select All", and then click **Download** to start downloading. See Figure 7.



(Figure 7)

- 12 Once all steps are complete, reinsert the TF card into the tool and power the tool via USB cable (one end to your tool and the other end on the computer) or via OBD II cable (one end

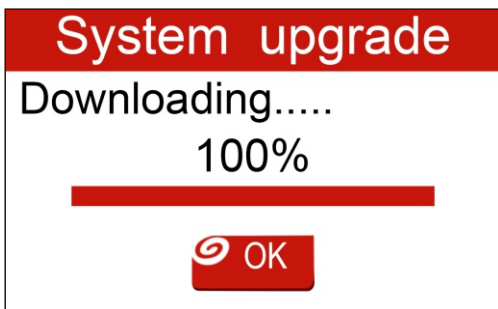
# LAUNCH

to OBD II connector of your tool and the other end of the vehicle's DLC). A dialog box (**Note:** If only diagnostic software are updated and no firmware packages are downloaded in Figure 7 , this box will not appear) prompting you to upgrade will pop up on the screen(See Figure 8& Figure 9).select OK to proceed.



(Figure 8)

- 13 The registration process is now completed, your tool is now ready for use. See Figure 9



(Figure 9)