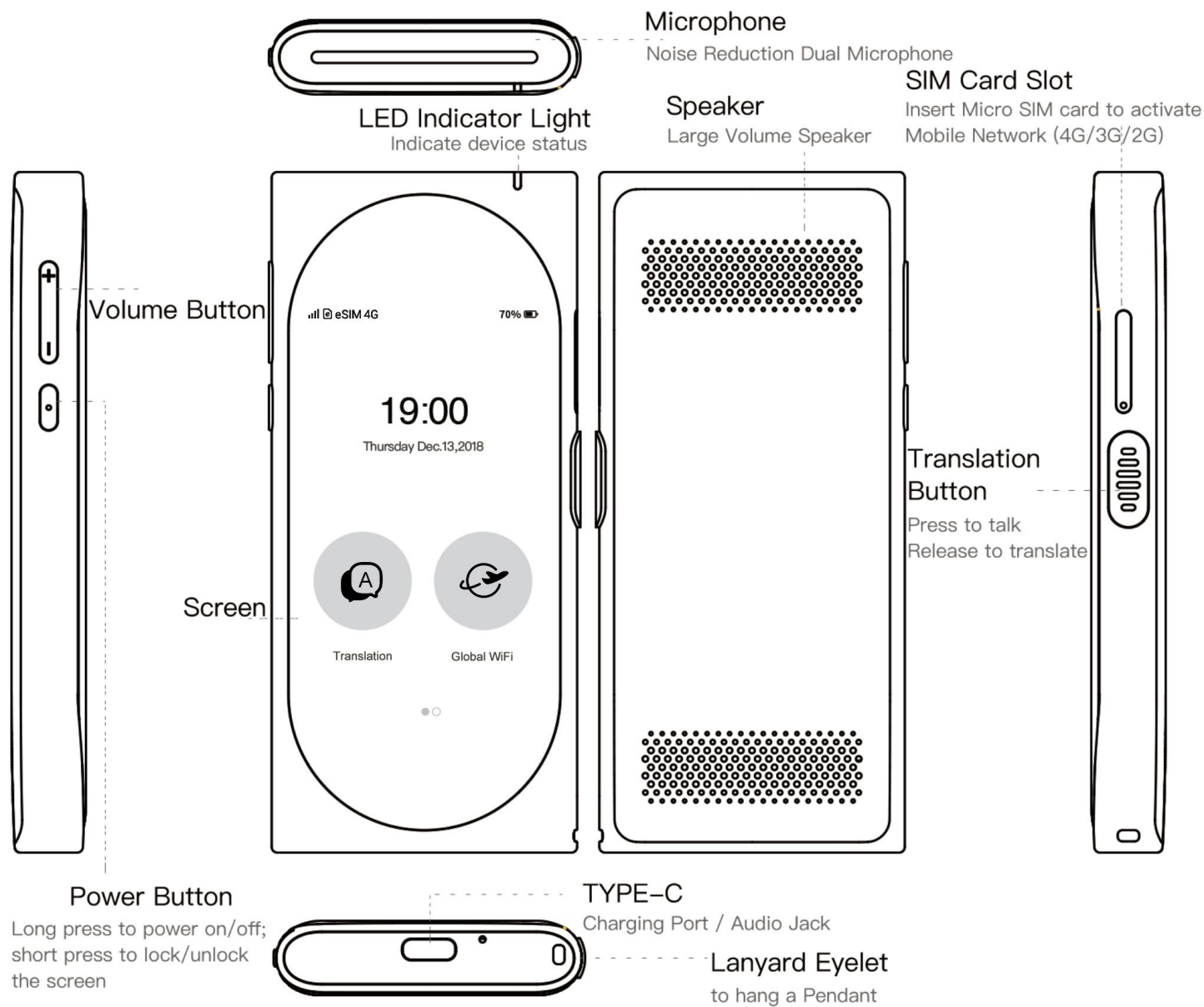




User Manual

amazon@langogo.ai

Appearance



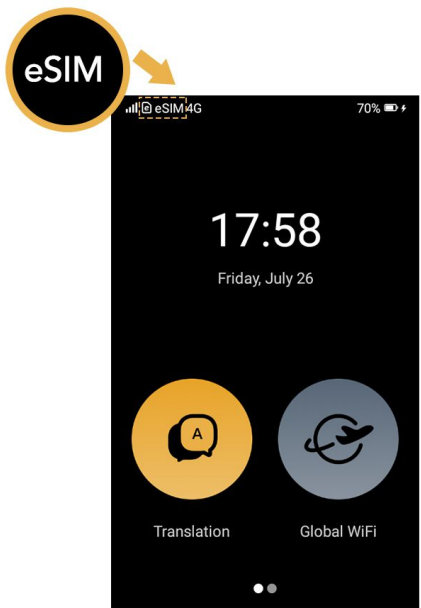
Specifications

Production:	Langogo Genesis
Dimensions:	4.78*2.14*0.52in
Colors:	Black / White
Weight:	0.7lb
Touch Screen:	3.1in retina screen; 800*480p
CPU:	MTK6739 Quad-Core 1.5GHz
ROM:	8GB
Microphone:	Active Noise Reduction Dual Microphone
Speaker:	High-fidelity loudspeaker with two-chamber high power amplifier Support typeC audio output connector
Supported Frequency:	2G GSM(B2,B3,B5,B8) 3G TDSCDMA(B34,B39) 3G WCDMA(B1,B2,B5,B8) 4G TDD_LTE(B38,B39,B40,B41) 4G FDD_LTE(B1,B2,B3,B5,B7,B8,B17,B20)
Battery Capacity:	2200mAh
Working Time:	6 hours
Working Temperature:	14°F-104°F
Working Humidity:	<70%
Working voltage:	3.5V-4.2V
What's in the Box:	Translator *1 Type-c Cable *1 Eject Pin *1 User Manual *1 Lanyard *1

Operation Guide

In order to use the online translation function, choose any of the following three ways to establish an Internet connection first.

eSIM connection (Recommended)

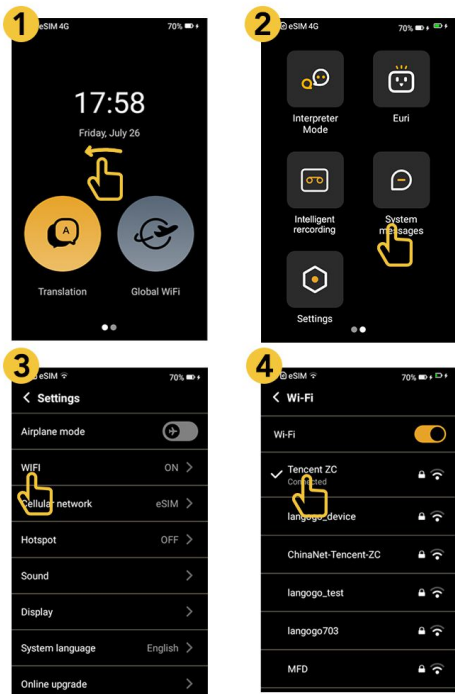


Each Langogo has a built-in eSIM chip. After new start or reset, it searches and connects to the supported mobile network automatically and makes the device ready for online translation. You will see the “eSIM” symbol in the upper-left side of your display which indicates successful eSIM connection.

Note: The eSIM connection may not work when there is no or weak mobile signal, please make sure the place you are using the device is covered with sufficient mobile signal.

Please refer to the home page or contact us for the supported countries and regions of eSIM connection.

Connect to a secure Wi-Fi network



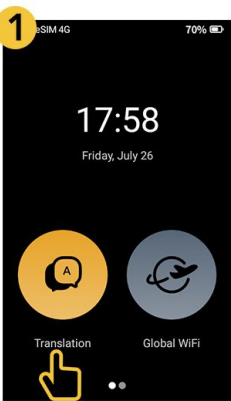
Slide left to the menu page > tap “Settings” > tap “Wi-Fi” > switch on Wi-Fi connection > Tap the name of the secure Wi-Fi network you want to join (Please use a Wi-Fi which has a password with at least 8-characters.) > Enter the password then tap “CONNECT”. If you can't tap “CONNECT”, the password you've entered is incorrect. After you join the network, you'll see (✓) next to the network and (📶) in the upper-left side of your display. If you don't know the password to the Wi-Fi network, contact your network administrator.

SIM card connection

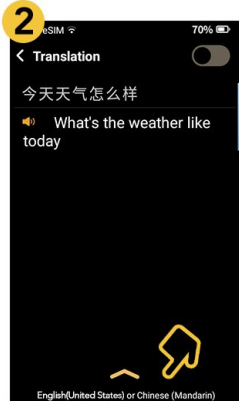


Note: **Only Micro-SIM card is available for our Device.** Any other non-standard card may cause the broken of SIM card slot or the device can't recognize the card. After inserting SIM card and restart the device, you can use SIM Card network service.

How to set Translation Languages?



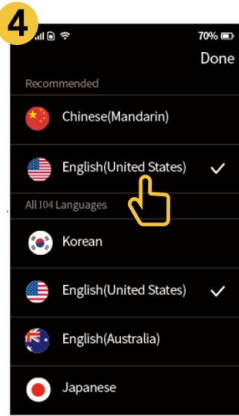
Enter voice translation interface



Slide upward to show inter-translation languages



Click national flag to enter language list

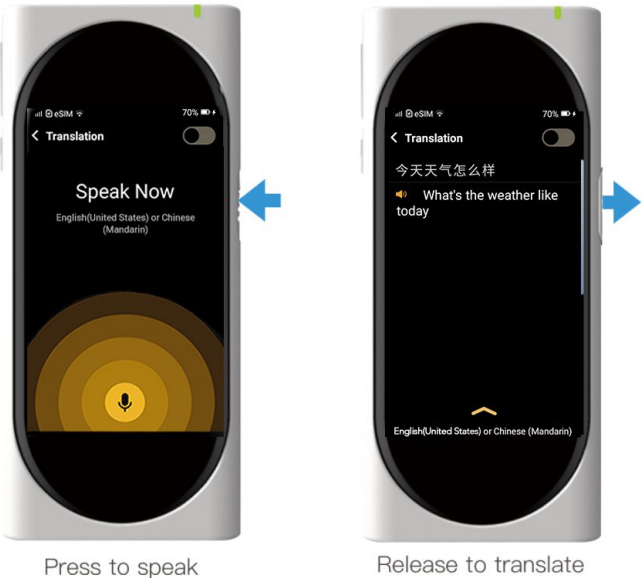


Click to select language

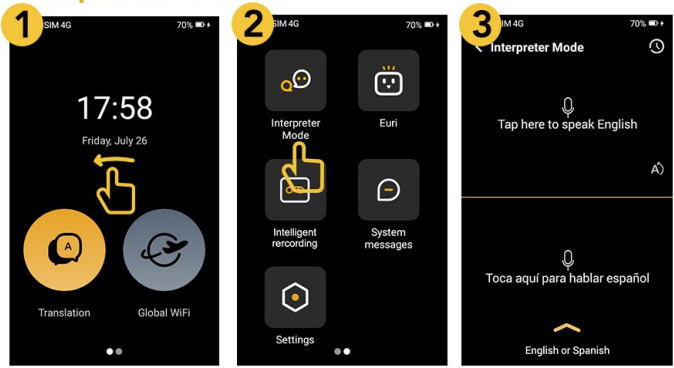
One-button Two-way Translation

Langogo offers a unique one-button two-way translation. After setting the two languages, it can automatically determine the current language being spoken based on the context and translate it to the target language automatically. No A/B buttons, no extra App.

One-button Translation



Interpreter Mode

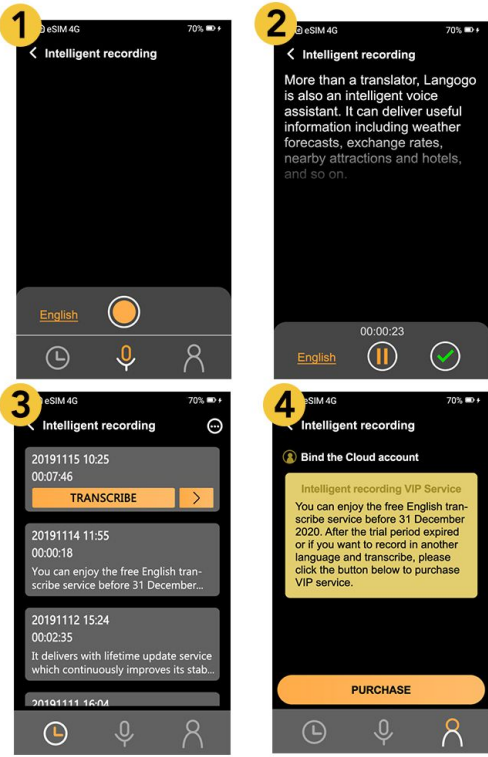


Slide left to the menu page > tap "Interpreter Mode" > After setting the two languages for interpretation, select the language being firstly spoken to begin the interpretation process. During the process, the selected language needs to be changed manually based on the current spoken language. The translated text will be automatically displayed in the corresponding section.

Note: A voice output of the translated result will not be conducted in order NOT to interfere the interpretation process. You can check the whole translation log in the history page and export it to your email afterwards.

Intelligent Recording

On the menu page > tap "Intelligent recording". After setting recording language, tap recording button to start/pause recording. The temporarily transcript text will be displayed in real time. Tap finish button to finish recording and save the audio file. The saved audio files with the corresponded transcription can be found and replayed in the "history" page. These files will be automatically uploaded to your langogo cloud account for further edit and usage.



Regist a free langogo cloud account under this link:
<https://www.langogo.ai/cloud>

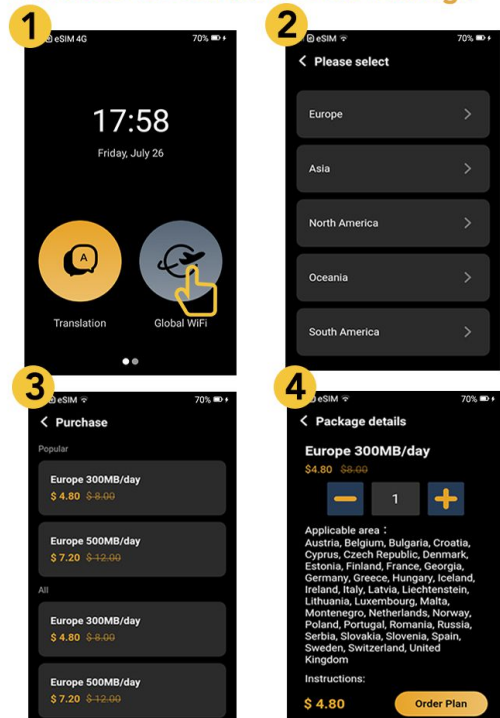
Notice: You can enjoy the free English transcribe service before 31 December 2020. After the trial period expired or if you want to record in another language and transcribe, please purchase VIP service. The Chinese recording and transcription service is free.

Establish a Wi-Fi Hotspot for other mobile devices

Langogo is not only a translator but also a mobile Wi-Fi hotspot router. There are two ways to establish a Wi-Fi hotspot:

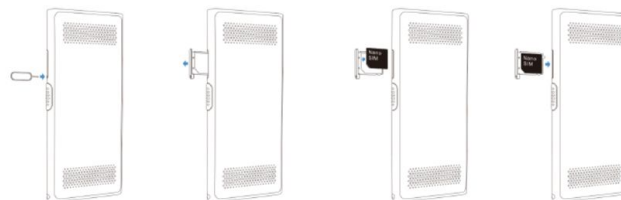
Hotspot with a Data Package or **Hotspot with SIM Card**

Purchase & Activate a Data Package



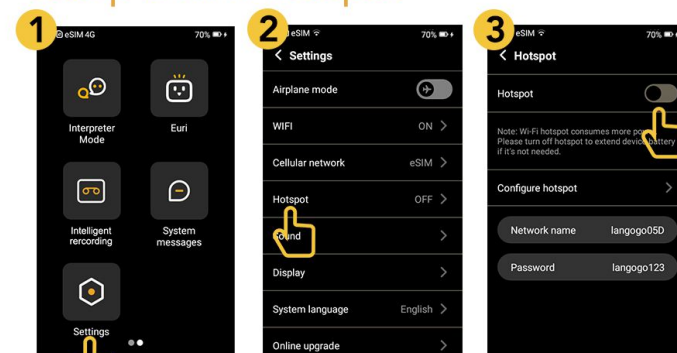
On the home page, tap "Global WiFi" > select a region > Tap the name of the Data Package you want to purchase > tap "Order Plan" > select Payment method then tap "Pay". After successfully purchase, you can check and activate the data package in the "Global WiFi" page. After activation of the package, you can then setup a Wi-Fi Hotspot using the device.

Hotspot with SIM Card



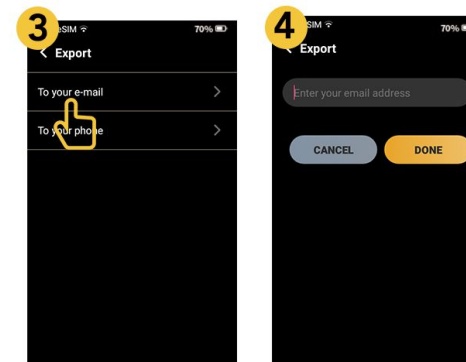
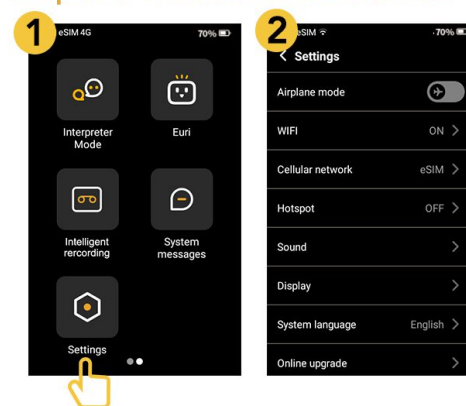
Insert a SIM card which has local data volume (i.e., a prepaid card) in the SIM card slot, the device will search and connect to the supported mobile network automatically. After successful mobile connection, you can then setup a Wi-Fi Hotspot using the device.

Setup a Wi-Fi Hotspot



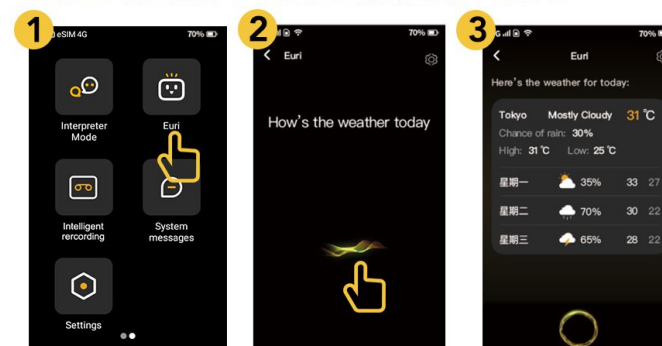
On the menu page, tap "Settings" > tap "Hotspot" in the list > Switch on the Hotspot. You can then connect your mobile devices (cellphone, laptop, tablet, etc., up to 5) to the hotspot in order to roam the internet with them.

Export Translation Records



On the menu page, tap "Settings" > scroll down to the bottom of the list, tap "Export translation records" > tap "To your e-mail" > Enter your email address, then tap "DONE". The translation record then will be sent to your email as a PDF file.

How to Use Voice Assistant Euri?



Click to enter Euri main interface Tell Euri your questions The result shows

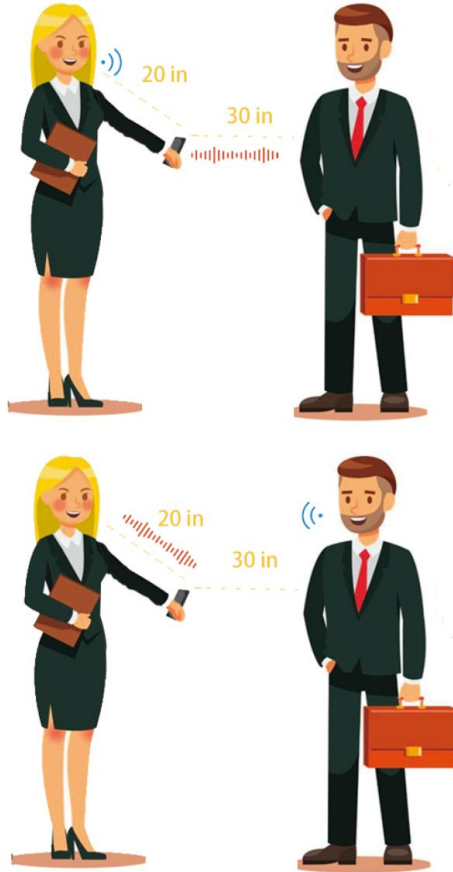
Languages:

Euri only supports 2 languages: Chinese / English now.

Euri's skills:

You can use Euri to inquire the weather, turn on hotspot, convert exchange rate etc. Searching for food and entertainments and using navigation etc. will be available gradually.

Usage Scenario



Far-field Recognition:

Our device support far-field recognition (0-40in recognition distance).

Ambient Noise Cancellation:

The translator can reduce the surrounding noise effectively under noisy environments.

Precautions

- 1- Please upgrade the firmware using the official methods if needed.
- 2- The signal may be weak or even no signal at airport, expressway, port, etc. Please restart the device to reconnect the network after leaving those places.
- 3- Please don't watch video online, download video, software or other high-traffic operations online when using hotspot overseas.
- 4- Do not use it outdoors in lightning storms.
- 5- Keep it out of reach of children.
- 6- Please use the battery, the charger and other accessories supplied by Langogo Genesis.
- 7- Do not make the device undergo the collision or damage.
- 8- The device is not waterproof, so please keep it away from any liquids.
- 9- Power off the device before boarding or near gas station.
- 10- Please charge the device in a well-ventilated environment and keep it away from flammable and explosive materials.

*Please use the device according to above instructions, otherwise we will not bear any responsibility, please acknowledge.