



  
**Light 'n' Easy**

  
**Light 'n' Easy**  
**STEAM MOP**

# Manual



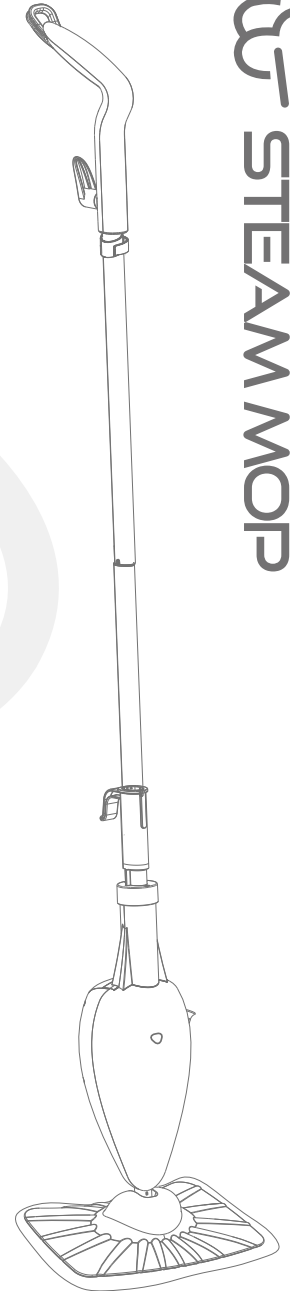
High Temperature Steam  
for Deep Cleaning



Ready to Use in 20 Seconds



Power Cord 20 Ft



XIAO TIAN ( ZHONGSHAN ) INDUSTRIAL CO., LTD.  
MADE IN CHINA

Thank you very much for purchasing your new steam mop, please be sure to read the instructions carefully before using.  
Please keep this manual for easy reference. Any questions call customer service 1-844-798-2632

## Safety Instructions

### For Household Use Only

**BASIC SAFETY PRECUATIONS SHOULD ALWAYS BE FOLLOWED WHEN USING THE STEAM MOP. READ ALL INSTRUCTIONS BEFORE USAGE.**

1. Use only as described in this manual.
2. Use only manufacturer's recommended accessories.
3. Do not use outdoors.
4. Do not leave the appliance unattended when plugged in. Always unplug the power cord from the electrical outlet when not in use and before servicing.
5. Do not allow the appliance to be used as a toy. Close attention is necessary when used by or near children, pets or plants.
6. Do not operate the appliance with a damaged plug or cord, or if the unit has been dropped or damaged. Return it to the manufacturer or the relating maintenance department for examination and repair.
7. Do not pull or carry by power cord, use power cord as handle, close a door on the power cod, or pull the power cord around sharp edges or corners. Keep power cord away from heated surfaces.
8. Do not unplug by pulling on power cord. To unplug, grasp the plug not the power cord.
9. To avoid the risk of electric shock:
  - a) Do not immerse the appliance into water or any other liquids.
  - b) Do not handle plug or the unit with wet hands or operate appliance without shoes.
  - c) Do not use extension cord or outlets with inadequate current carrying capacity.
  - d) Do not disassemble or attempt to repair the appliance on your own. Incorrect re-assembly or repair can cause a risk of electrical shock or injury to persons when the appliance is used.
10. Keep y our work area well lit.
11. Use **ONLY** on flat, horizontal surfaces. Do not use on walls, counters or windows.
12. Extreme caution should be exercised when using this appliance to clean stairs.
13. When in use, never turn the appliance over or on its side. Never direct steam towards people, animals or plants.
14. Do not put any objects into openings. Do not use with any opening blocked.
15. Do not put hands or feet under the steam mop. Unit gets very hot.
16. Never use the steam mop without micro-fiber cleaning pad attached.
17. Do not add cleaning solutions, scented perfumes, oils or any other chemicals to the water used in this appliance as this may damage the unit or make it unsafe for use. If you live in a hard water area, we recommend using distilled water in your steam mop.
18. Carefully remove the micro-fiber cleaning pad immediately after you unplugged and allowed the unit to cool.
19. When cleaning the stem mop, unplug the power cord from the electrical outlet and clean with a dry or damp cloth. Do not pour water or use alcohol, benzene or paint thinner on the unit.
20. Store the appliance indoors in a cool, dry area.
21. Do not store unit with damp/wet micro-fiber cleaning pad attached. Never leave the steam mop in one spot on any surface for any period of time with a damp or wet micro-fiber cleaning pad attached as this will damage your floors.

### Warning!

Your steam mop is designed to clean hard floor surfaces that will withstand high heat. Do not use on unsealed wood or unglazed ceramic floors. On surfaces that have been treated with wax or some no wax floors, the sheen may be removed by the heat and steam action. It is always recommended to test an isolated area of the surface to be cleaned before proceeding. We also recommend that you check the use and care instructions from the floor manufacturer.



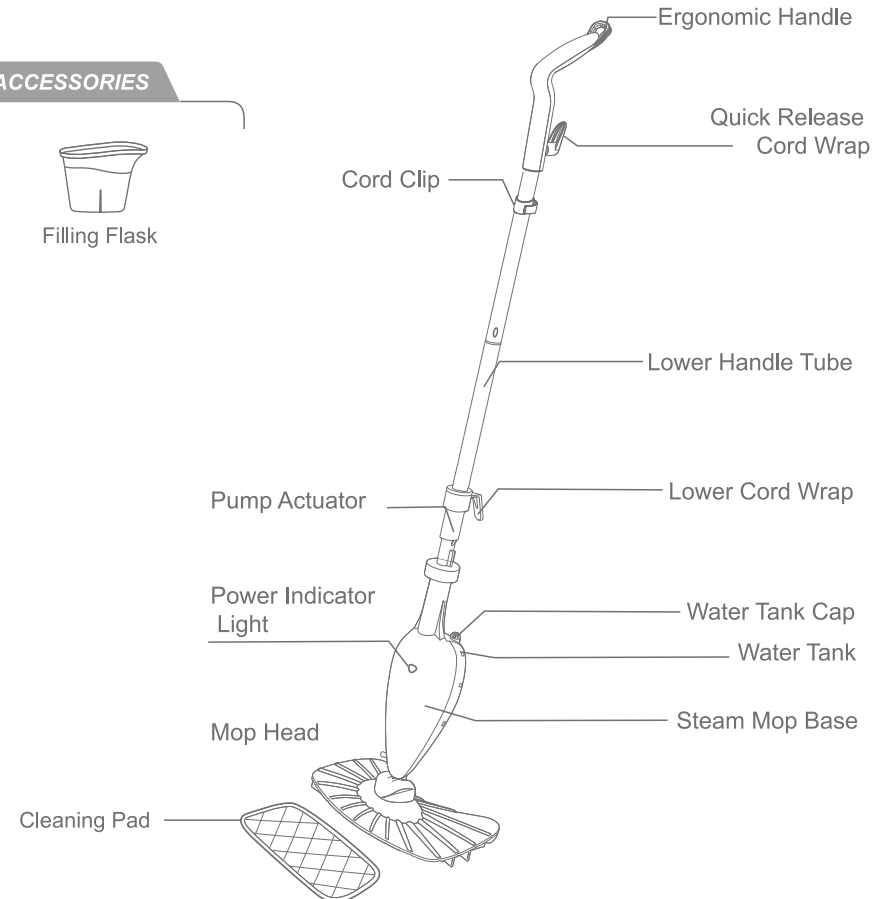
**Danger of scalding.**  
Please use caution when using the steam mop. The steam emitted is very hot.

## PARTS AND FEATURES

### ACCESSORIES



Filling Flask

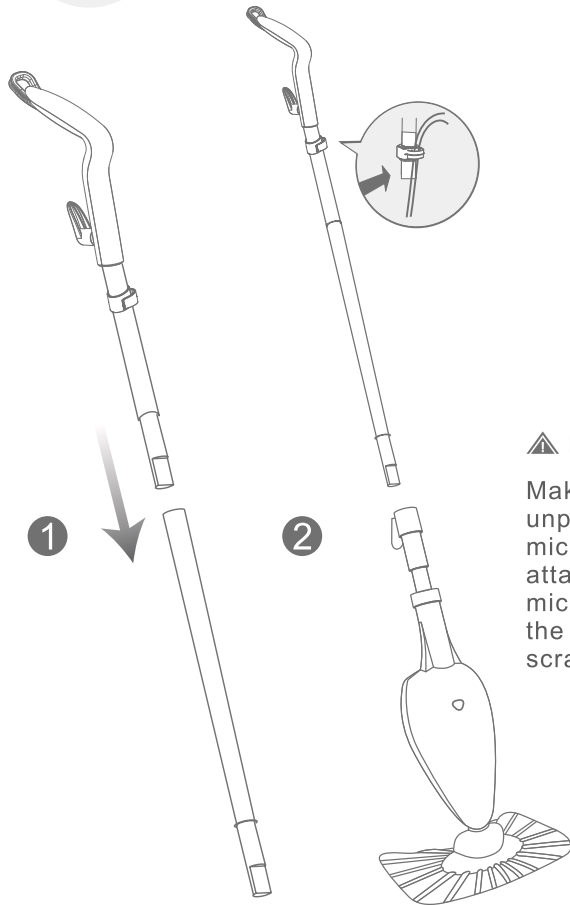


Read all instructions before assembly and use of the appliance. Safeguard these instructions for future reference.

### NOTICED:

This appliance must be connected to a grounded wiring system. If it should malfunction or break down, grounding provides a safe path of least resistance for electrical current, reducing the risk of electrical shock. The cord for this appliance has an equipment-grounding conductor and a grounding plug. It must only be plugged into an outlet that is properly installed and grounded in accordance with all local codes and ordinances.

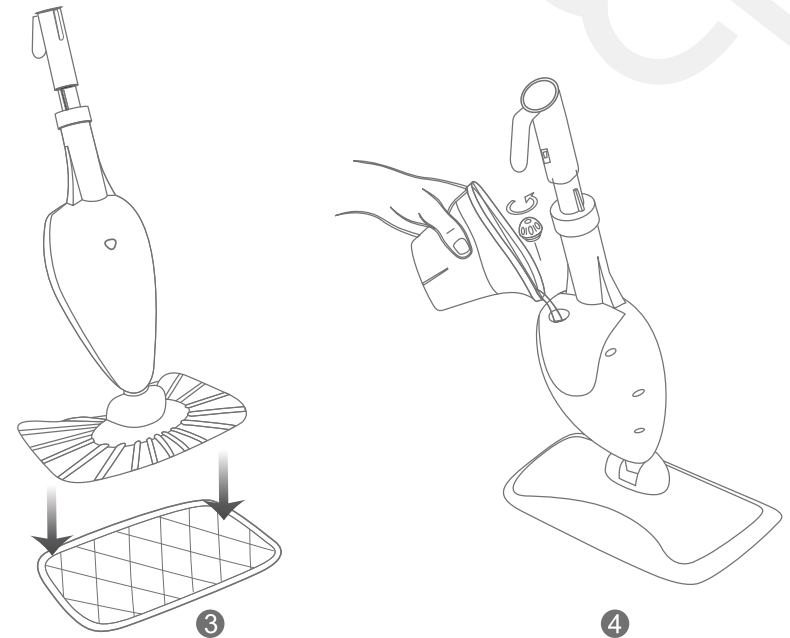
## Assembling



### ▲ IMPORTANT:

Make sure that the unit is unplugged before the microfiber cleaning pad is attached. Always attach the microfiber cleaning pad to the mop head or you may scratch your floor.

There may be a little water in or around the water tank while assembling your steam mop, because we have tested all of our steam mops before packing to provide the best quality of our products.



1. Verify all the listed parts are included.
2. Slide the extension handle into the lower handle tube (the short tube). Push the two tubes together, a sound of click means they are assembled successfully. (fig.1)
3. Insert the extension handle into the designated opening in the main body until it gets locked into place. (fig.2) Insert the cord into the cord clip on the extension handle.
4. Place the micro-fiber cleaning pad underneath the mop head, with quick fastener strips facing up. Simply press the mop to the pad to attach it. (fig.3)

### ▲ IMPORTANT:

Before you fill up the tank, make sure your steam mop is unplugged.

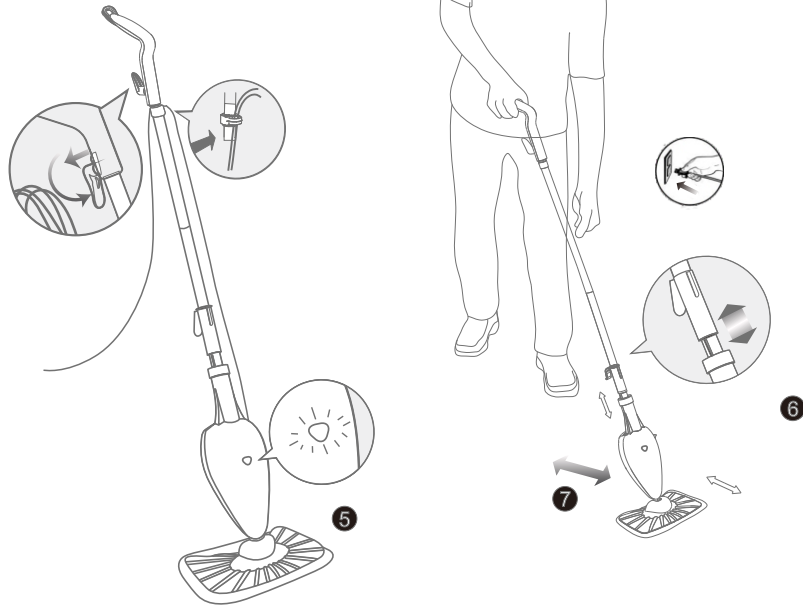
1. Remove the cap to fill the water tank. Rotate the tank cap counterclockwise to open.
2. Fill the flask with water and pour it into the tank, just one flask of water is enough for your steam mop. (Fig.4)
3. Replace the water tank cap by rotating it clockwise.

### Tips

- Your microfiber cleaning pad should be replaced every 2 months to maximize cleaning performance.
- The tank should be only filled with water. If chemicals or cleaning solution is added in the tank, the appliance may get damaged and could be dangerous for use.

## I Operation

### ■ Using Your Steam Mop



#### NOTICED :

When you use your steam mop for the first time or if you have not used the unit in awhile, it may take a minute or two for the water to travel through the pump and into the heater to create steam. Get it started by pumping the handle a few times. If you have waited a few minutes and you still do not see any steam, reference the troubleshooting section.

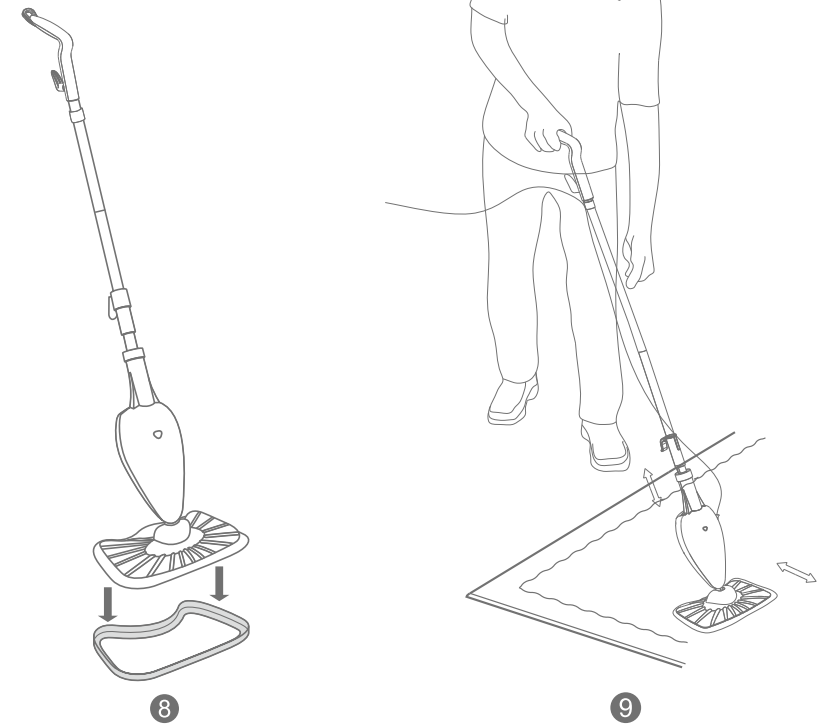
#### ▲ IMPORTANT:

Your steam mop needs water to make steam! Never use your steam mop without water in the tank. Sweep or vacuum your floors before using your steam mop. Your steam mop was designed to get rid of stuck-on gunk, grime, paw/footprints and it will do a better job if yesterday's cereal crumbs aren't in the way.

1. Pull and twist the quick release cord holder to unwrap the power cord completely. Plug into the electrical outlet. The "On" light will turn blue. (fig.5)
2. It takes about 20 seconds for the steam to get working. Now pump the handle a few times to prime the pump and activate steam. (fig.6)
3. Mop with a forward and backward motion to customize steam output automatically. (fig.7)

## I Operation

### ■ Using Your Carpet Glider (Must purchase separately)

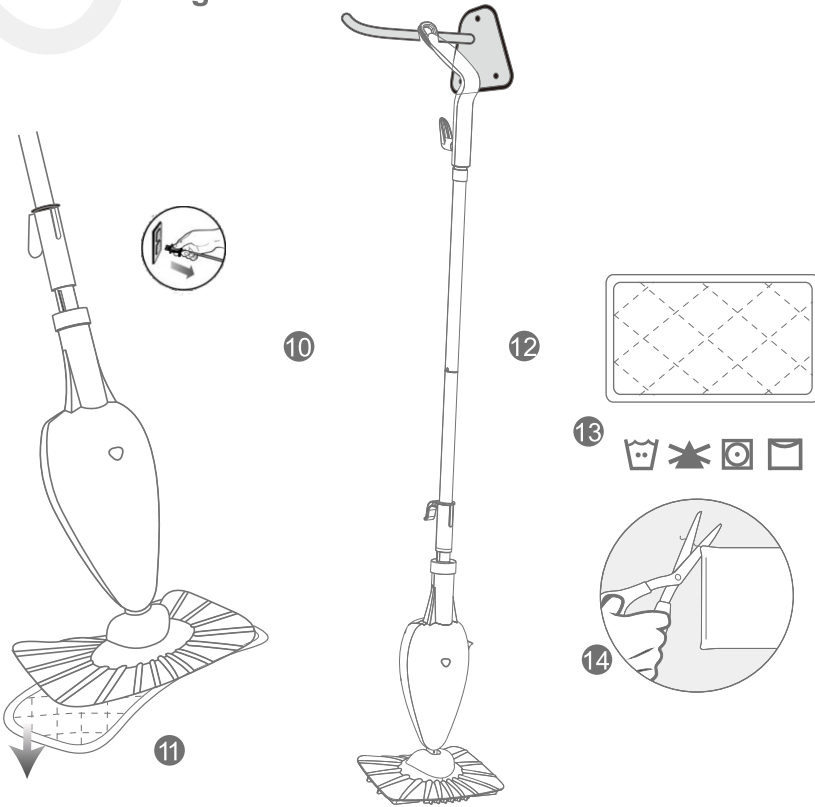


#### Tips:

The steam mop is versatile! The carpet glider transforms your steam mop in no time. Now you can freshen and deodorize your carpets and area rugs with the power of steam.

4. Set the carpet glider on the carpet with the smooth side down. Place the mop head, with the cleaning pad attached, on top of the carpet glider. Your steam mop will rest on top of the glider. (fig.8)
5. Plug in your steam mop and begin freshening your carpet by pushing the mop and glider back and forth to release steam, just as you do on hard floors (fig.9). When the carpet is nice and fresh and you're finished using the steam mop, unplug it and store it as you would normally.

## Care and Storage



### ▲ IMPORTANT:

Cleaning pad may be very hot from the steam after use. Use caution when removing. Let the unit cool for 3-5 minutes first before removing.

1. After using the steam mop, unplug the cord from the outlet, place the mop into the upright position and let the unit cool 3-5 minutes.
2. Carefully separate microfiber cleaning pad from steam mop, avoiding contact with the hot pad or dirt. (fig.11)
3. Empty the water tank before storage. Remove the water tank cap and empty the tank over a sink. Replace the water tank cap.
4. To store the cooled steam mop, hang on a large hook. (fig.12) Or store the steam mop standing upright, leaning against a wall. Make sure it's stored away from children and high traffic areas.
5. Wash pads in warm water. Wash the cleaning pad separately from other clothes. Only use liquid detergent (no powder detergent). Do not use fabric softeners. Line dry or dry on a low dryer setting. (fig.13)
6. If there are loose threads on the pad carefully cut the threads with scissors. Do not pull on them or cut. (fig.14)

Model	Voltage	Frequency	Power	Water Tank Capacity
S3101	120V~	60Hz	1150W	7oz

## Tips

It is subject to change without notice due to continuing design and quality improvements.

For cleaning performance, please change the micro-fiber cleaning pad when it is needed.

Light 'n' Easy



Assembly Instructions  
How to Use

### I Trouble shooting Guide

Problem	Possible Reasons & Solutions
Steam Mop will not turn on	<ol style="list-style-type: none"> <li>1. Your steam mop should be securely plugged in.</li> <li>2. Check your fuse or breaker.</li> </ol>
Steam Mop will not make steam	<ol style="list-style-type: none"> <li>1. Is there water in the water tank? If not, add water to your steam mop.</li> <li>2. If the unit still doesn't make steam, follow the decalcification instructions on page 3.</li> </ol>
Steam Mop leave water on the floor	<ol style="list-style-type: none"> <li>1. Check to see if your micro-fiber cleaning pad is soaked through.</li> <li>2. We recommend you unplug the steam mop and change the micro-fiber cleaning pad.</li> <li>3. Make sure the micro-fiber cleaning pad is attached correctly.</li> </ol>
Floors are cloudy, Streaky or spotty after steaming.	<ol style="list-style-type: none"> <li>1. The micro-fiber cleaning pad might be dirty. Flip or Streaky or spotty after steaming.</li> <li>2. If you washed the pad with powder detergent, then the pad may have residual detergent left on it .Wash it again with liquid detergent.</li> <li>3. If you are cleaning in a kitchen area where there Might be a build-up of grease then use a degreasing agent such as an all-purpose cleaner or dish soap and paper towels to clean the area first.</li> <li>4. This might be leftover from past cleaners used on the floor surface. Use the steam mop a few more times and see if the leftover cloudiness is removed.</li> <li>5. Do you have hard water? If you do, you might want to switch to distilled water.</li> </ol>
Steam Mop is hard to push	<ol style="list-style-type: none"> <li>1. Make sure the micro-fiber cleaning pad is attached correctly.</li> <li>2. Check to see if the micro-fiber cleaning pad is excessively dirty. Replace if the pad is too dirty or wet.</li> </ol>

Light 'n' Easy



Assembly Instructions  
How to Use

### One Year Limited Warranty

Thank you for your purchase!

**WARRANTY:**

Enjoy awarranty for the steam mop for 1 year.

**REPLACEMENT POLICE:**

Replacements are based on a manufacturing defect and not replaced for abuse, misuse or other non intended usage of the steam mop. For shipping back of the product, the shipping cost back is \$14.95. We reserve the right to repair or replace based on receipt of the sample back.

**MONEY BACK GUARANTEE:**

Enjoy a 1-year money back guarantee from the day you purchase.

**EXCELLENT CUSTOMER SERVICE:**

Need any help? please feel free to Contact us,  
Service Number: 1-844-798-2632  
Service mailbox: support@lightneasy.cc

**Do you like your new steam mop? You can share it with your friends and please review the product on Amazon!**