

www.krups.com

ARUBA

www.krups.com

English p. 5

Français p. 23

Español p. 41

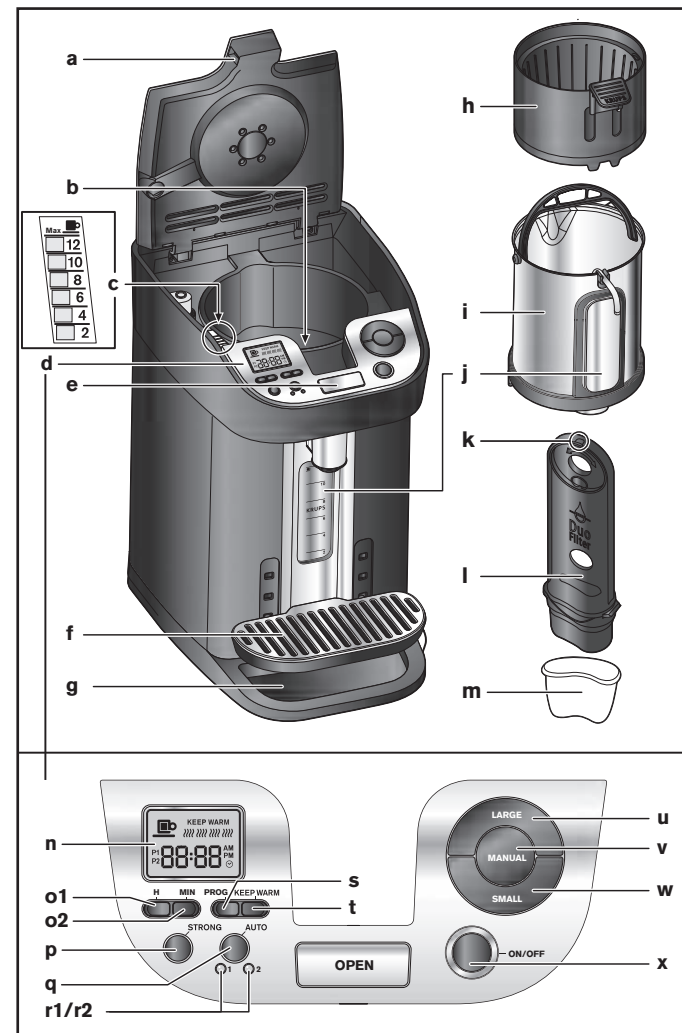


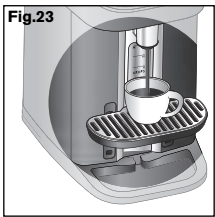
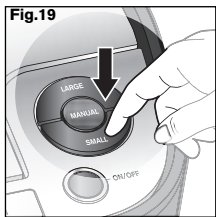
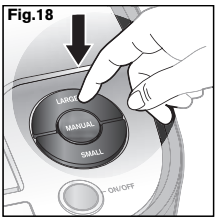
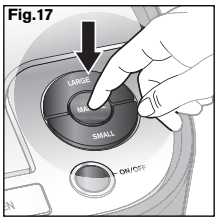
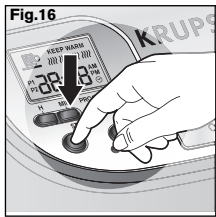
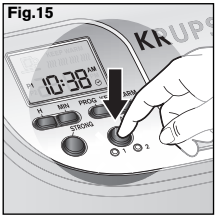
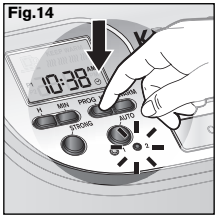
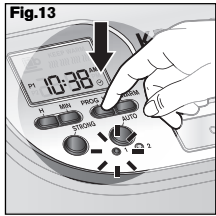
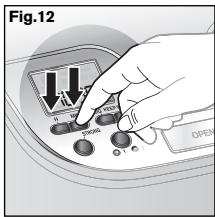
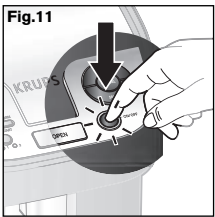
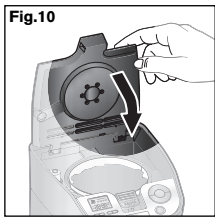
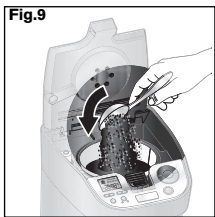
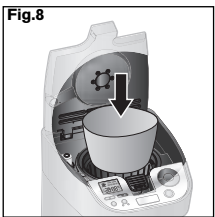
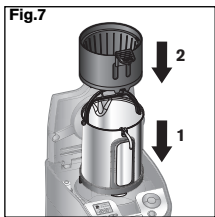
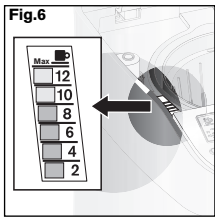
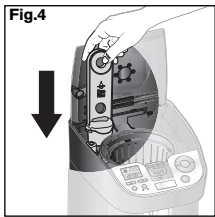
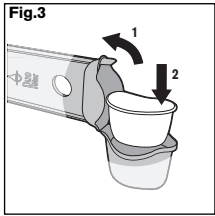
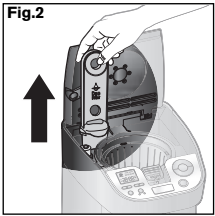
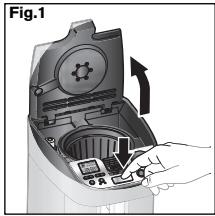
EN
FR
ES

Réalisation : Espace Graphique

KRUPS

Réf. NC00016960





FECHA DE COMPRA:

CANADA	GROUPE SEB CANADA 345 Passmore Avenue Toronto, ON M1V 3N8	MEXICO	G.S.E.B. MEXICANA, S.A. de C.V. Goldsmith 38 Desp. 401, Col. Polanco Chapultepec Delegacion Miguel Hidalgo 11 560 Mexico D.F.	U.S.A.	GROUPE SEB USA 2121 Eden Road Millville, NJ 08332
	1-800-418-3325		(01800) 112 83 25		800-526-5377

IMPORTANT SAFEGUARDS

When using electrical appliances, basic safety precautions should always be followed to reduce the risk of fire, electric shock and/or injury to persons, including the following:

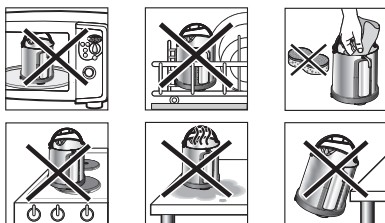
- 1 - Read all instructions prior to first use.
- 2 - Do not touch hot surfaces. Use handles or knobs.
- 3 - To protect against fire, electric shock and injury to persons, do not immerse cord, plugs or machine in water or other liquid.
4. Not intended for use by children.
- 5 - Close supervision is necessary when any appliance is used near children. Keep appliance out of reach of children.
- 6 - This appliance is not designed to be used by children or people without knowledge or experience with the product, unless they are supervised or given prior instructions concerning the use of the appliance by someone responsible for their safety.
7. Children must be supervised to ensure that they do not play with the appliance.
- 8 - Burns can occur from touching hot plate, hot water or steam. Exercise caution.
- 9 - Unplug machine from outlet as soon as you stop using it over a prolonged period and when you clean it. Allow to cool before putting on or taking off parts, before cleaning the machine and before storing.
- 10 - All machines are subject to stringent quality control. Practical tests using machines taken at random are conducted and this may explain any slight marks or coffee residue showing prior to use.
- 11 - Do not operate any machine with a damaged cord or plug or after the machine malfunctions, or has been damaged in any manner. Return machine to the Krups Service Center for examination, repair or adjustment.
- 12 - To reduce the risk of injury do not drape cord over the counter top or table top where it can be pulled on by children or tripped over unintentionally.
- 13 - Do not let cord touch hot surfaces.
- 14 - The use of accessory attachments not recommended by Krups may result in fire, electric shock or injury to persons.

English

- 16 - Do not place on or near a hot gas or electric burner, or in a heated oven.
 - 17 - To disconnect the machine, turn the control to "OFF", then remove plug from wall outlet. Do not yank cord, instead grasp plug and pull to disconnect.
 - 18 - Do not use appliance for other than intended use.
 - 19 - Do not pour liquids other than water and descaling solutions specified in this manual into the water tank.
 - 20 - Protect the machine against humidity and freezing.
 - 21 - Do not pour water into the appliance if it is still hot.
 - 22 - Always close the top lid (a) when running the coffee maker.
 - 23 - Always place your coffee maker on a flat, stable, heat resistant work surface away from water splashes and any external sources of heat.
 - 24 - Do not leave the empty coffee tank on the hot plate.
 - 25 - The water tank is equipped with one permanent magnet. Avoid placing water tank near appliances and objects that can be damaged by magnetism, e.g. credit cards, diskettes and other data devices, video tapes, television and computer monitors with picture tubes, mechanical clocks, hearing aids and loud speakers. **Patients with pacemakers or defibrillators: do not hold water tank directly over pacemaker or defibrillator.**
26. This machine is for household use only.

Coffee tank:

- A.** The coffee tank is designed for use only with this appliance. It must never be used on a range top.
- B.** Do not set a hot coffee tank on a wet or cold surface.
- C.** Do not use a cracked coffee tank or a coffee tank having a loose or weakened handle.
- D.** Do not clean coffee tank with harsh cleansers, steel wool pads, or other abrasive materials.
- E.** Do not use the coffee tank over an open flame, on an electric stovetop or in an oven.
- F.** Never place your coffee tank in a microwave oven or on a stove top.



SAVE THESE INSTRUCTIONS

CAUTION

This machine is for household use only. Any servicing other than cleaning and user maintenance should be performed by the nearest authorized Krups Service Center. Visit our website at : www.krups.com or contact our Consumer Service Department for the Service Center nearest to you.

To reduce the risk of fire or electric shock, do not dismantle the machine. Repairs should be done by an authorized Krups Service Center only.

SHORT CORD INSTRUCTIONS

- A.** We do not recommend using an extension cord with this device.
- B.** If an extension cord is absolutely necessary,
 - 1-** the marked electrical rating of the extension cord should be at least as great as the electrical rating of the machine,
 - 2-** the longer cord should be arranged so that it will not drape over the counter top or table top where it can be pulled on by children or tripped over.
- C.** This machine has a polarized plug (one blade is wider than the other). To reduce the risk of electric shock, this plug is intended to fit into a polarized outlet only one way. If the plug does not fit fully into the outlet, reverse the plug. If it still does not fit, contact a qualified electrician. Do not attempt to modify the plug in any way.
- D.** If the power cord is damaged, it must be replaced by a special cable or unit available from the manufacturer or its after-sales service.

In the interest of improving products, Krups reserves the right to change specifications without prior notice.

English

TABLE OF CONTENTS

DESCRIPTION.....P. 9

BEFORE USING FOR THE FIRST TIME.....P. 9

MAKING COFFEE.....P. 10

CURRENT TIME; SETTING THE CLOCK.....P. 11

PROGRAMMING THE UNITP. 12

AROMA FUNCTIONP. 13

DISPENSING COFFEE.....P. 13

DRIP TRAYS (ADJUSTABLE AND PERMANENT)P. 14

WATER FILTRATIONP. 15

CLEANINGP. 15

DESCALINGP. 16

COFFEE BREWING GUIDEP. 17

ACCESSORIES.....P. 18

TROUBLESHOOTING.....P. 19

KRUPS MANUFACTURER'S WARRANTYP. 21

DESCRIPTION

a	Top lid
b	Heating base
c	Water window
d	Control panel
e	Open button
f	Adjustable drip tray
g	Permanent drip tray
h	Brew basket
i	Coffee tank
j	Coffee level indicator
k	Water filter change indicator
l	Water filter holder
m	DuoFilter cartridge
n	Display
o1 & o2	Hours and minutes setting buttons
p	Aroma function
q	Auto-Start
r1 & r2	Auto-Start LED's
s	Programming button
t	Keep warm setting button
u	Large setting
v	Manual volume setting
w	Small setting
x	On/Off button

BEFORE USING YOUR MACHINE FOR THE FIRST TIME

- Remove all packaging.
- The water filter holder and DuoFilter cartridge are located inside the water tank during shipping.
- Remove them before using the appliance **Fig.1**.

English

Follow the steps below to run a first brew cycle to rinse the system.

- Fill the water tank up to the max level and do not use coffee, coffee filter or water filter.
- Then follow the instructions 'MAKING COFFEE' and 'DISPENSING COFFEE'.
- To replace the DuoFilter cartridge first remove it from its plastic covering **Fig.3**.
- Rinse the filter cartridge under tap water for 1 minute.
- Unhinge the water filter holder, place the filter into the filter holder.
- Firmly press the filter holder into the bottom of the water tank **Fig.4**.

MAKING COFFEE

- Open the top lid by pressing the open button **(e)** **Fig.1** and fill the water tank **Fig.5** with cold water taking careful note of the number of cups. Use filtered water if possible.

For best result in cup, the coffee tank **(j)** has a scale inside which indicates the recommended water-per-cup volume. Feel free to use it filling in the water tank.

For easier pouring and measurement, the water gauge segments blacken as water rises **Fig.6**.

- Insert the coffee tank **(i)** and the brew basket **(h)** securely in place **(b)**. Be sure the coffee maker stands on an appropriate counter top. Then check the coffee tank **(i)** sits straight on the heating base **(b)** before starting the brew cycle **Fig.7**.
- Add paper filter into the brew basket **Fig.8**.
- Add ground coffee into the basket **Fig.9**
 - Measure one rounded coffee scoop per 5 oz. cup of water.
 - For more details please refer to the brewing guide on page 17
- Close the lid **Fig.10**. The machine is ready for brewing.

Note : Be careful to put back in place both coffee tank and brew basket before initiating the brew cycle

- For immediate brewing, press the **ON/OFF** button **(x)** and the brew cycle will begin **Fig.11**.
 - The **ON/OFF** button **(x)** will blink red while the machine is brewing and stay illuminated while the coffee is kept warm on the heating base **(b)**.

- You can turn the machine off at any time by pressing the **ON/OFF** button (x) again.



DURING THE BREW CYCLE STEAM RISES FROM THE TOP OF THE MACHINE. BE CAREFUL TO KEEP HANDS AWAY FROM THIS AREA UNTIL AFTER THE BREW CYCLE IS COMPLETED !

keep warm function:

- The heating plate will maintain the temperature in the coffee tank (i) for 2 hours after which the machine will shut off automatically. This is for safety and convenience. The auto-off time can be adjusted to 1, 2, 3 or 4 hours. See page 12 – Programming the unit.
- When keeping the coffee warm it is best to leave the brew basket above the water tank.

WARNING :



**Do not exceed the maximum capacity of the water tank as shown by the water gauge (c).
Place the ground coffee into the paper filter.
Do not put coffee inside the pump.
Do not put coffee in the water tank, it could block the valve.**

Note : After use, discard grounds, and rinse the filter basket under running water.

CURRENT TIME; SETTING THE CLOCK

- Day time clock setting can be adjusted at any time except during keep warm.
- When the machine is first plugged in, the clock blinks in order for you to set the clock.
- Press the H (o1) and MIN (o2) buttons to set the time **Fig.12**. This will ensure the **AUTO-START (q)** function to start at the proper time.
- You can press and hold the buttons to move quickly through the hours or minutes.

PROGRAMMING THE UNIT

1) PROG BUTTON:

Use the **PROG** button (**s**) to access the 2 AUTO-START (**q**) functions of brewing at preset time. The LCD will display a different function each time **PROG** (**s**) is pressed. The blinking display of previous setting or 9:99 at first use and the icon show you that the unit is in a programming mode.

Auto-On setting #1:

- Press **PROG** (**s**) once **Fig.13**, P1 displays and the AUTO-START program #1 is indicated with a red light (**r1**).
- Press the H and MIN buttons (**o**) to set a time for the machine to start brewing automatically. You can press and hold the buttons to move quickly through the hours or minutes.
- Press **PROG** (**s**) when done. You will then be invited to set the second program. You can skip this second step by pressing **PROG** (**s**) once again.

Auto-On setting #2:


- Press **PROG** (**s**) twice **Fig.14**, P2 appears on the screen and the AUTO-START program #2 is indicated with a red light (**r2**). This second preset start time can be used for days with others wake times (on weekends for example).
- Press **AUTO START** button to activate the programmation **Fig.15**.
- After programming the automatic start time as described above, be sure to prepare the machine for a brew cycle with water in the tank, coffee in the brew basket, lid closed and coffee tank securely in place.
- Press the **AUTOSTART** button (**q**) to choose preset number 1 or number 2. You can check the preset times by pressing **PROG** (**s**).
- Once the programming is done, the LCD displays pictograms with the current time.
- The machine will brew automatically at the set time. The program will need to be activated when needed again just by pressing on **AUTOSTART** (**q**).



The setting of Autostart functions 1 & 2 can be adjusted only during stand by mode (neither during brewing or keep warm).

2) KEEP WARM BUTTON

a - Preset:

- Press **KEEP WARM** button **(t)**, the pictogram  appears on the display.
- Use the **KEEP WARM** button **(t)** to change between 1, 2, 3 or 4 hours.
- Machines are pre-set for a 2 hour keep warm.
- This function controls how long the heating plate will be maintained before automatically turning off.

b - After the brew cycle:

- As soon as the brew cycle ends, a chronometer (countdown timer) is activated. It provides you with the time since the coffee has been brewed (freshness indicator).
- You can change the length of keep warm at any moment within the limit of 4 hours. The keep warm function can be stopped by pressing **ON/OFF (x)** when the brew cycle is completed.

AROMA FUNCTION

This function allows a proper extraction of the coffee flavour from the coffee ground. Even if the aroma function is always in use, its influence on coffee taste is more distinguishable with small batches.

- To activate the Aroma function, press the **STRONG** button **(p)** Fig.16, then press **ON/OFF (x)**.

Note : - This function can be set at any programming step.

- This function cannot be changed once the brew cycle has started.

DISPENSING COFFEE

1) DISPENSING MODES

Use at your convenience the **MANUAL (v)**, **LARGE (u)** or **SMALL (w)** button to serve a cup of coffee.

a - MANUAL setting

- Press and hold **MANUAL (v)** Fig.17 to adjust volume in the cup.
- Release to stop the coffee flow.

English

b - PRESET settings

- One simple push on either **LARGE (u) Fig.18** or **SMALL (w) Fig.19** will provide you with preset volumes per cup.

Factory preset:

- LARGE = 8 ounces
- SMALL = 4 ounces

- Volume is individually adjustable for both **LARGE (u)** and **SMALL (w)** buttons. Just press and hold to adjust volume per cup. Then release to record the new setting volume. Next use will provide you with this new setting.
- One impulse is enough. If you press the button for a long time your previous record will be cancelled.

Note: You can check the remaining coffee through the window at the front (**j**) **Fig.20.**

For more convenience, coffee dispensing can be stopped by pressing any button on the right side of the control panel (including **ON/OFF**).

2) AVAILABILITY

For more convenience, dispensing coffee and volume adjustments are possible:

- From the beginning of the brew cycle.
- At any moment, until the end of the selected keep warm duration.

Note : For more easiness, you can still dispense a cup 10 minutes after the keep warm has stopped.

DRIP TRAYS (ADJUSTABLE AND PERMANENT)

1) ADJUSTABLE DRIP TRAY

- Three heights are available to adjust the drip tray according to your cup size **Fig. 21, 22, 23.**

2) PERMANENT DRIP TRAY

- For an easier maintenance, this drip tray collects additional liquids and deposits to prevent damages on the coffee dispenser.

WATER FILTRATION

- DuoFilter Water Filtration: active vegetable and resin based double acting anti-chlorine and anti-scale filter. The anti-chlorine action of the filter brings out the most delicate flavors of the coffee. The anti-scale action allows for longer periods between descaling.

Note: there is a rotary indicator (**k**) on the top of water filter holder. This indicates when the DuoFilter cartridge should be changed. Place the index mark next to the month the filter should be changed, referring to the criteria just below.

Water type	Uses	Replace Duo Filter every :
Soft water	120	4 months
Hard water	80	2 months

Example: if you replace the DuoFilter in January (1) you should set the indicator to March (3) or May (5), depending on the hardness of your local water supply: position the number 3 or 5 opposite the index mark.

IMPORTANT:



The DuoFilter must only be used with water.
The coffee machine still works if the water filter is not in place.

If the coffee machine has not been used for more than one month, rinse the DuoFilter under running water.



It is recommended not to leave the DuoFilter in place for more than 5 months.

Your appliance is designed for use with the coffee tank it was purchased with. Do not use any other recipient.

CLEANING

- Turn off the coffee machine and remove the plug from the outlet. Do not clean the coffee machine when it is hot.

English

- Never immerse the coffee machine in water or put it under running water.
- Clean the body of the coffee machine with a damp cloth or sponge.
- Open the top lid **(a)**, remove the paper filter. The coffee tank **(i)**, brew basket **(h)**, water filter holder **(l)**, drip tray **(f)** and its grill also can be washed in warm soapy water and rinsed thoroughly, or cleaned in the upper rack of a dishwasher.
- Do not use scouring agents or harsh cleansers on any part of the coffee machine.

DESCALING

Descaling is necessary to keep your coffee machine running efficiently. The frequency of descaling depends on the hardness of your water and how often you use the coffee machine.

If you notice the brew cycle has slowed it is generally time to descale the machine.

See the chart below:

	Type of water	Without Duo Filter Water Filtration	With DuoFilter Water filtration
KM9000	Hard Soft	60 uses 120 uses	120 uses 180 uses

- Before descaling, remove the water filter **(m)**.
- You may use either the Krups descaling solution diluted in 16 ounces of water or 8 ounces of white vinegar.
- Pour the solution or vinegar into the water tank and start the coffee machine (without coffee).
- Allow half the liquid to run into the coffee tank, then switch off and let stand for 1 hour.
- Restart the coffee machine to complete the cycle.
- Rinse the coffee machine by running it through 2 full cycles with water only.
- Do not forget to regularly remove the adjustable drip tray **(f)** to check if any water remains in the permanent drip tray **(g)**.

COFFEE BREWING GUIDE

THE COFFEE

Choose your beans wisely. It is best to use premium whole beans from a trusted brand or roaster. Arabica beans provide the best flavors and have less caffeine, while Robusta beans are easier to grow and less expensive, they have less flavor and higher caffeine content. Robusta beans are sometimes used in blends to add a particular bitterness to the brew. Beans can be roasted very lightly to provide a smooth aromatic taste or roasted dark to provide stronger flavors, and anywhere in between. A good roaster will be able to describe the flavors that the beans will impart to your brewed coffee.

Note: experiment with coffee grounds made from different beans and different roasts to identify one or several that suits your taste.

THE COFFEE / WATER RATIO

The amount of ground coffee must be carefully measured against the volume of water for each brew cycle. It is important to use enough coffee to avoid over extraction. A small amount of coffee would be overwhelmed by a large volume of hot water. The coffee level indicator measures “cups” as 5 oz each. Maximum capacity is slightly more than 50 oz total water volume before brewing. The volume of brewed coffee will be slightly less because the ground coffee will absorb a certain amount.

Krups recommends using 7 grams of ground coffee per 5 oz cup of water. 7 grams can be measured in one rounded tablespoon.

If the resulting brew seems too strong you can adjust by using slightly less ground coffee. If you prefer a much lighter taste it is best to brew at the recommended ratio and dilute the resulting brew with a measure of hot water. This allows the best flavor to be extracted from the beans while avoiding over extraction of too small an amount of ground coffee.

THE WATER

The water is a critical factor in the taste of your brewed coffee. Filtered water is normally the best choice to help avoid the minerals and chlorine that can be found in municipal water systems. However if your water tastes good then it should be good for your coffee.

Never pour milk, prepared coffee, tea, etc. into a water tank.

English

THE GRIND

The method of grinding and the level of fineness of the grind have a significant impact on the resulting taste of the brewed coffee. Ideally you should grind fresh roasted whole beans just before brewing. Be aware that this machine is set to brew the most common grinds found on store shelves. Typically pre-ground coffees are of a similar size, medium-coarse. A very fine grind will produce much stronger flavors but risks becoming extracted during the brew cycle producing a more bitter taste. You can learn more about coffee grinding and about **Krups** range of grinders at our website **www.krupsusa.com**.

ACCESSORIES

- Accessories can be purchased at many retail stores, and through Krups website.
 - Duo Filter (m) water filtration cartridges - pack of 2: F472
 - Krups descaling solution: F054

TROUBLESHOOTING

PROBLEM	SOLUTION
The coffee does not brew or the machine does not switch on.	<ul style="list-style-type: none"> ■ Check to ensure the appliance is plugged into a working outlet, and the appliance is in the «ON» position. ■ The water tank is empty. ■ There was a power failure. ■ There was a power surge. Unplug the machine, then plug it back in. ■ The clock must be reset after a power failure. ■ The Auto-Off function switches off the coffee maker. Switch off the coffee maker then switch it back on to make more coffee. For more information, refer to the section « Making coffee ».
Appliance appears to be leaking.	<ul style="list-style-type: none"> ■ Make sure that the water tank has not been filled beyond the max. fill level.
It takes a long time to brew.	<ul style="list-style-type: none"> ■ It may be time to descale your coffee dispenser. ■ Numerous minerals may accumulate in the coffee maker's circuit. Periodic descaling of the machine is recommended. More frequent descaling may be necessary depending on the hardness of the water. For more information, refer to the "Descaling" section. <p>NOTE: do not dismantle the machine.</p>

English

PROBLEM	SOLUTION
The brew basket (h) overflows or the coffee drips too slowly.	<ul style="list-style-type: none"> ■ Coffee maker needs cleaning. ■ Excessive amount of coffee. We recommend that you use one measuring spoon or one tablespoon of coffee ground per cup. ■ Coffee ground too fine (grounds for Espresso maker are not suitable for drip coffee makers). ■ Some coffee grounds have seeped in between the paper filter and the brew basket (h). ■ The paper filter is not open or is incorrectly positioned. ■ Rinse out the brew basket (h) before putting in the paper filter so that its edges stick to the damp sides of the filter. ■ More than one paper filter in basket.
The coffee has a bad taste.	<ul style="list-style-type: none"> ■ The coffee dispenser needs to be cleaned. ■ The coffee grounds are not suited to your coffee dispenser. ■ The proportion of coffee to water is inadequate. Adjust it to suit your taste. ■ The quality and freshness of the coffee are not optimal. ■ Poor-quality water. Use filtered or bottled water.
The coffee temperature is too low.	<ul style="list-style-type: none"> ■ Warm the coffee tank (i) by rinsing it with hot water just before brewing.
Coffee dispensing does not work (no coffee flow)	<ul style="list-style-type: none"> ■ Check the front window to ensure some coffee remains in the coffee tank (i) ■ The dispensing system may be clogged. You can clean the coffee tank simply by rinsing it with water. If the trouble remains put your coffee tank in the dishwasher.

If your appliance still does not work properly, please call your respective country's Consumer Service.

MANUFACTURER'S WARRANTY



: www.krups.com

With a strong commitment to the environment, most of Krups products are repairable during and after the warranty period. Before returning any defective products to the point of purchase, please call Krups consumer service directly at the phone number below for repair options. Your help to sustain the environment is appreciated!

The Warranty

This product is guaranteed by Krups for a period of **2 years** against any manufacturing defect in materials or workmanship, starting from the initial date of purchase.

The manufacturer's warranty by Krups is an extra benefit which does not affect consumer's Statutory Rights.

The Krups warranty covers all costs related to restoring the proven defective product so that it conforms to its original specifications, through the repair or replacement of any defective part and the necessary labor. A replacement product may be provided instead of repairing a defective product. Krups's sole obligation and your exclusive resolution under this warranty are limited to such repair or replacement.

Conditions & Exclusions

The Krups warranty only applies within USA, Canada & Mexico, and is valid only on presentation of a proof of purchase. The product can be taken directly in person to an authorized service centre or must be adequately packaged and returned, by recorded delivery (or equivalent method of postage), to a Krups authorized service centre. Full address details for each country's authorized service centre are listed on the Krups website (www.krups.com) or by calling the appropriate telephone number listed below to request the appropriate postal address.

Krups shall not be obliged to repair or replace any product which is not accompanied by a valid proof of purchase.

This warranty will not cover any damage which could occur as a result of misuse, negligence, failure to follow Krups instructions, use on current or voltage other than as stamped on the product, or a modification or unauthorized repair of the product. It also does not cover normal tear and wear, maintenance or replacement of consumable parts, and the following:

- using the wrong type of water
- scaling (any de-scaling must be carried out according to the instructions for use);
- ingress of water, dust or insects into the product;
- mechanical damages, overloading
- damages or bad results due to wrong voltage or frequency
- accidents including fire, flood, lightning, etc
- professional or commercial use
- damage to any glass or porcelain ware in the product

English

This warranty does not apply to any product that has been tampered with, or to damages incurred through improper use and care, faulty packaging by the owner or mishandling by any carrier.

The Krups manufacturer's warranty applies only for products purchased and used in USA, Canada & Mexico. Where a product purchased in one country and then used in another one:

- a) The Krups guarantee duration is the one in the country of usage of the product, even if the product was purchased in another listed country with different guarantee duration.
- b) The Krups guarantee does not apply in case of non conformity of the purchased product with the local standards, such as voltage, frequency, power plugs, or other local technical specifications.
- c) The repair process for products purchased outside the country of use may require a longer time if the product is not locally sold by Krups
- d) In cases where the product is not repairable in the new country, the Krups guarantee is limited to a replacement by a similar product or an alternative product at similar cost, where possible.

Consumer Statutory Rights

This Krups manufacturer's warranty does not affect the statutory rights a consumer may have or those rights that cannot be excluded or limited, nor rights against the retailer from which the consumer purchased the product. This warranty gives a consumer specific legal rights, and the consumer may also have other legal rights which vary from State to State or Country to Country or Province to Province. The consumer may assert any such rights at his sole discretion.

Additional information

Accessories, Consumables and end-user replaceable parts can be purchased, if locally available, as described in Krups internet site.

CANADA	GROUPE SEB CANADA 345 Passmore Avenue Toronto, ON M1V 3N8	MEXICO	G.S.E.B. MEXICANA, S.A. de C.V. Goldsmith 38 Desp. 401, Col. Polanco Chapultepec Delegacion Miguel Hidalgo 11 560 Mexico D.F.	U.S.A.	GROUPE SEB USA 2121 Eden Road Millville, NJ 08332
	1-800-418-3325		(01800) 112 83 25		800-526-5377



: www.krups.com