



TBI PRO
ENGINEERING

ELECTRONIC
ZapLikePRO 360

User Manual



TABLE OF CONTENTS

1. INTRODUCTION
2. ATTENTION
3. WHERE AND HOW TO USE
4. HOW TO CHANGE ATTRACTANT
5. BULB REPLACEMENT
6. TECHNICAL INFORMATION
7. TROUBLESHOOTING
8. CUSTOMER CARE SERVICE

1. INTRODUCTION

Thanks for purchasing our product. Please check the condition of the device before use. If the device is damaged, do not use it.

The device is environmentally safe and hygienic, smoke-free and non-toxic. It does not include pesticides. The built-in lamp is harmless to people, pets or plants.

The highly efficient fitting tube emits special ultraviolet waves and attracts insects. Insects fly into ultraviolet light and get an electric shock when they come in contact with an electrified grid. The device is highly efficient and energy-saving. It is designed for continuous use and is ready to provide you with a long mosquito-free pastime for many years.

For optimal performance, please read this manual carefully before use.

2. ATTENTION

- Do not use in inflammable and/or explosive locales and alike.
- Check the local voltage codes before installing.
- Do not intend to touch internal high voltage grids because of electric shock danger. Never put metal objects inside the net during use.
- Hang or place the appliance out of the reach of children.
- Never remove any fixed part of the appliance to make internal adjustments to avoid electric shock.
- If the lamp starters or other parts of appliance are damaged, the manufacturer, its service agent or similarly qualified person must replace it in order to avoid a hazard.
- Clean metal grid at frequent intervals. Unplug the appliance before cleaning. Use suitable brush to clean the high voltage grids and throw away the insects debris from the collection tray every week. Do not wash with water.
- Do not place in the rain.
- Avoid rough shaking that could damage the tube or its components.

3. WHERE AND HOW TO USE

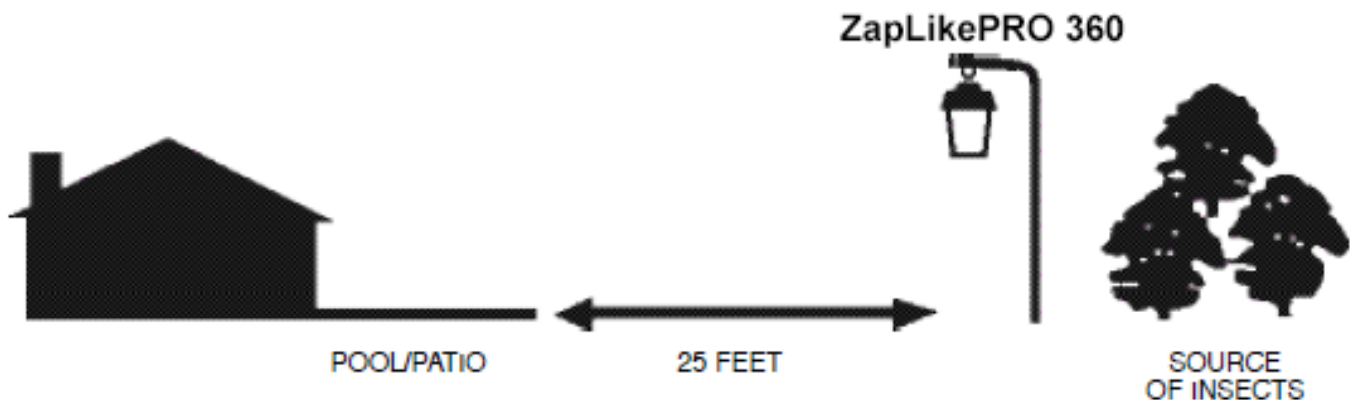
INDOOR:

The product can be used in the bedroom, living room, hotel, restaurant, office, etc. The product has an energy-saving design and soft lighting, so it should not be used in high light conditions; otherwise, it will affect the destruction of mosquitoes.

The right methods for using the device are below: for example, keep the house lighting off and use device before sleeping, or turn off all strong lighting for 10-20 minutes, or keep the product in the dark place while working.

Suggested suspension height: keep the product hanged at a height of 1.2 m at a distance of 0.3 m from the wall.

OUTDOOR:

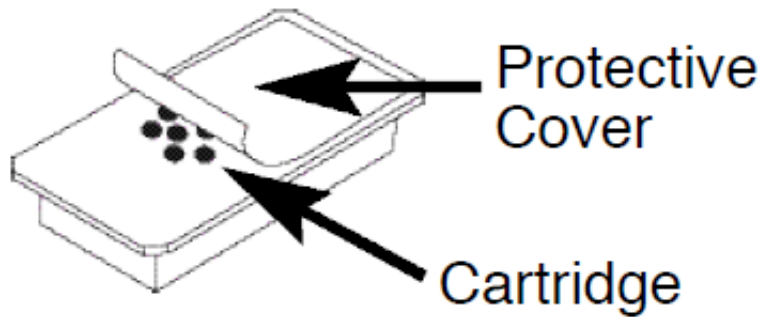


1. Hang the insect killer at a height of 6 to 8 feet above the ground.
2. Place the unit 25 feet away from the area intended for human activity.
3. Position the insect killer between the source of insects (woods, lowlands, etc.) and the area to be protected.
4. Plug cord into a compatible extension cord designed for outdoor use. The bulb(s) will emit a bluish glow within a few seconds.

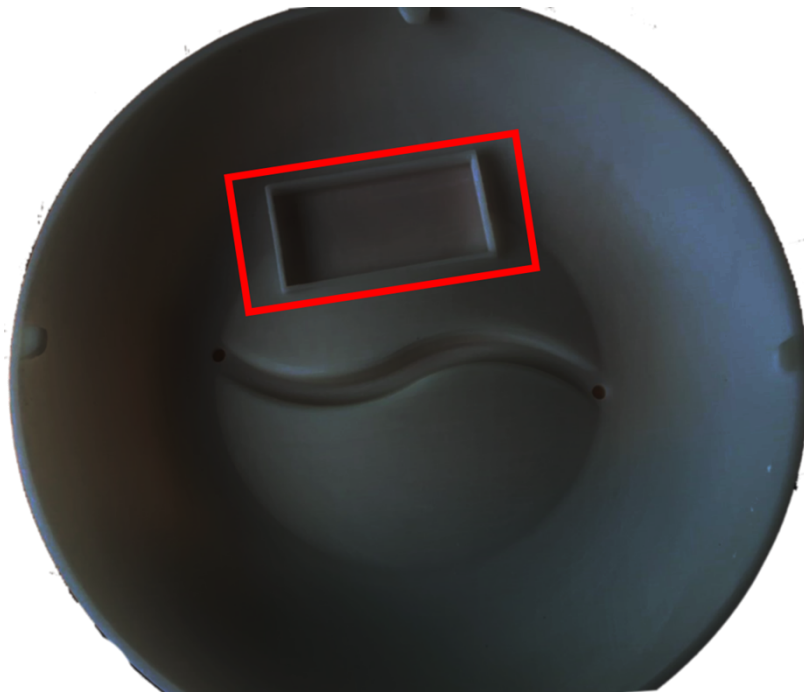
To increase the killing rate, please clean mosquitoes stuck in the grid. Please keep the power off, open the base, and **use the metal bar with insulation to discharge the net**, and after that, use soft brush to clean it.

4. HOW TO CHANGE ATTRACTANT

Open the device base. Remove the attractant cartridge from the sealed pouch and remove the protective cover from the face of the cartridge. Avoid touching the openings in the cartridge and always wash your hands thoroughly after contact. For best results replace the cartridge every 30 days.



Place the attractant at the spot marked in red on the picture below. Wash hands thoroughly after handling.



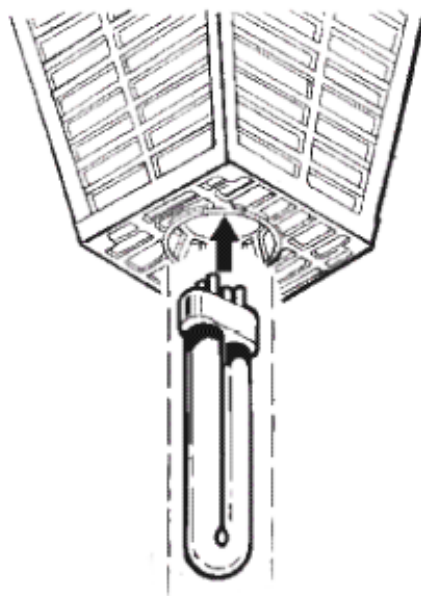
After skin contact: Wash with plenty of soap and water. If skin irritation occurs: consult a doctor.

After eye contact: Rinse thoroughly with water for several minutes. Remove contact lenses if present and it is easy to do. Continue rinsing. Immediately call a POISON CENTER or doctor/physician.

After swallowing: Rinse out mouth with water. Call a POISON CENTER/doctor if you feel unwell.

5. BULB REPLACEMENT

1. Disconnect the unit from the electric source.
2. Open the lamp by twisting the bottom tray in accordance with the arrows on it.
3. Use a screwdriver to remove the screw that holds the plastic gate.
4. Now the bulb can be pulled out of its socket.
5. Insert the replacement bulb into the socket.
6. Mount all parts back.



Notice: Ultraviolet or "black light" is invisible to the eye, and its ability to attract insects diminishes over time. Therefore, although the bulb appears to be functioning, it should be replaced every season to maintain optimal "black light" efficiency.

6. TECHNICAL INFORMATION

Input voltage: 110V AC, 60Hz

Light source: 20W UV tube.

High voltage metal grid: 3800-4200V

7. TROUBLESHOOTING

Caution: unplug unit before servicing

Problem	Possible Cause	Correction
A. The light is off and there is no high voltage on the grid	<ol style="list-style-type: none">1. There is no electricity.2. The lamp is not installed correctly3. The starter is faulty.4. The burnt out bulb.	<ol style="list-style-type: none">1. Check fuse or circuit breaker. Check extension cord.2. Check all sockets for proper fit and alignment.3. Starter replacement by manufacturer is required.4. Replace the light bulb.
B. The light is on, but there is no high voltage on the grid.	<ol style="list-style-type: none">1. Shorted grids.2. The transformer is defective.	<ol style="list-style-type: none">1. Examine the grid and clean it using an air blower.2. Replacement by manufacturer is required.
C. Intermittent or continuous sparking between grid rods.	<ol style="list-style-type: none">1. The gap between grid rods is too small.2. The grid is clogged with foreign material.	<ol style="list-style-type: none">1. Unplug the unit and adjust grids by bending them back into alignment.2. Clean the grid using an air blower.
D. The light is on, but no longer attracts insects.	<ol style="list-style-type: none">1. The invisible power of blacklight is reduced due to the age of the lamp.2. Attractantbait is no longer effective.	<ol style="list-style-type: none">1. Replace the bulb. See bulb replacement section in the user manual.2. Replace the attractant cartridge.

8. CUSTOMER CARE SERVICE



Email: **support@tbi-pro.com**
(Available 24/7)



Live Chat Messenger at:
http://bit.ly/chat_tbi-pro



Phone: **+1 800-674-9229**
(Mon-Fri 8:00-20:00 (GMT-6))
Skype: support_TBIPRO

Just scan the QR code with your Iphone or Android camera to
get contact with us

