

EN..... P. 1-8
FR..... P. 9-16
ES..... P. 17-24

KRUPS

CONTROL LINE

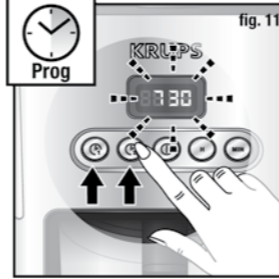
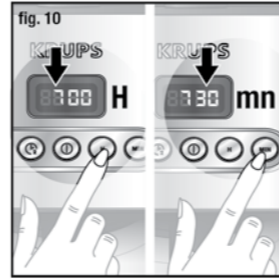
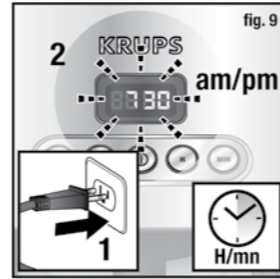
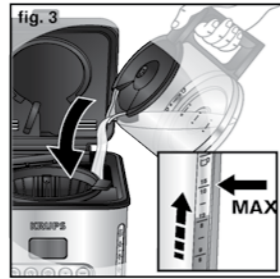
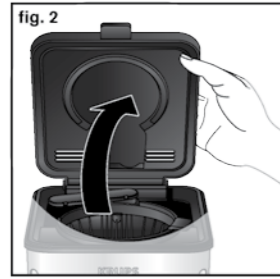
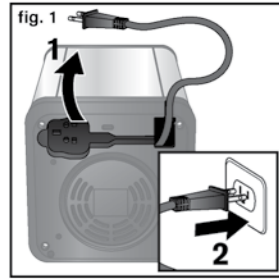


EN

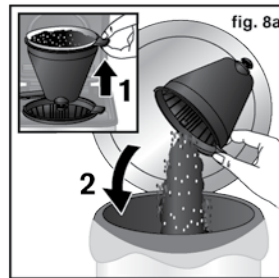
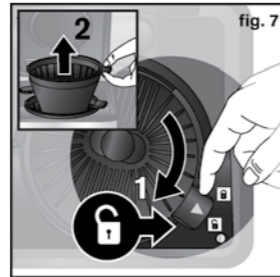
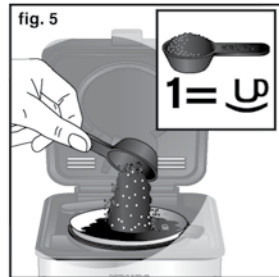
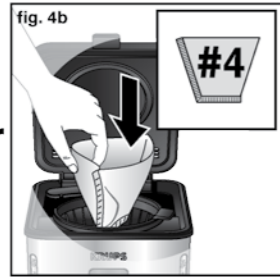
FR

ES

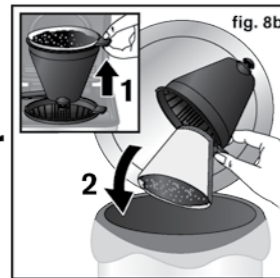




or



or



KRUPS INTERNATIONAL GUARANTEE

Date of purchase: / Date d'achat / Fecha de compra / Data da compra / Data d'acquisto / Kaufdatum / Aankoopdatum / Kobsdato / Inköpsdatum / Kjøpsdato / Ostopäivä / Data zakupu / Data vânzării / Įsigijimo data/ Ostukuupäev / Datum nakupa / Sorozatszám / Dátum nákupu / Pirkuma datums / Datum Kupovine / Datum kupnje / Data cumpărării / Datum nákupu / Tarikh pembelian / Tanggal pembelian / Ngày mua hàng / Satın alma tarihi / Дата продаж / Дата на закупуване / Датум на купување / Сатылган мерзімі / Ημερομηνία αγοράς / Ψαλιδωτή ημερ / 購買日期 / 購入日 / 구입일자 / تاريخ الشراء / تاريخ خرید

Product reference: / Référence du produit / Referencia del producto / Nome do produto / Tipo de prodotto / Typnummer des Gerätes / Artikelnummer van het apparaat / Referencenummer / Produktreferens / Artikelnummer / Tuotenumero / referenca produktu / Model / Gaminio numeris / Toote viitenumber / Tip aparata / Vásárlás kelte / Тип аппарата / Produkta atsauces numurs / Model proizvoda / Oznaka proizvoda / Cod produs / Produk rujukan / Referensi produk / Mã sản phẩm/ Ürün kodu / Модель / Модель / Модел на уреда / Modeli / Кодикос προϊόντος / Όχημα / 產品模型 / 製品レファレンス番号 / 제품명 / مرجع كامل محصول / مرجع المنتج الكامل

Retailer name and address: / Nom et adresse du vendeur / Nombre y dirección del minorista / Nome e endereço do revendedor / Nome e indirizzo del negozio / Name und Anschrift des Händlers / Naam en adres van de dealer / Forhandler navn & adresse / Återförsäljarens namn och adress / Forhandler navn og adresse / Jälleenmyyjän nimi ja osoite / Nazwa i adres sprzedawcy / Numele și adresa vânzătorului / Parduotuvės pavadinimas ir adresas / Müüja kauplus ja aadress / Naziv in naslov trgovine / Tipusszám / Názov a adresa predajcu / Veikala nosaukums un adrese / Naziv i adresa maloprodaje / Naziv i adresa prodavca / Naziv i adresa prodajnog mjesta / Nume și adresă vânzător / Název a adresa prodejece / Nama dan alamat peruncit / Nama Toko Penjual dan alamat / Tên và địa chỉ cửa hàng bán/ Sattici firmanın adı ve adresi / Название и адрес продавца / Назва и адреса продавця / Търговки обект / Назив и адреса на продавницата / Сатушының аты және мекен-жайы / Επωνυμία και διεύθυνση καταστήματος / Ψαλιδωτή ημερ / 零售商的店名和地址 / 販売店の名前、住所 / 소매점 이름과 주소 / اسم بائع التجزئة و عنوانه / نام درس خرده فروش

Distributor stamp / Cachet distributeur / Sello del distribuidor / Carimbo do revendedor / Timbro del negozio / Händlerstempel / Stempel van de dealer / Forhandler stempel / Återförsäljarens stämpel / Forhandler stempel / Jälleenmyyjän leima / Pieczęć sprzedawcy / Ştampila vânzătorului / Antspaudas / Tempel / Žig trgovine / Eladó neve, címe/ Razitko predajcu / Zimogs/ Pečat maloprodaje/ Pečat prodavca / Pečat prodajnog mjesta/ Ştampila vânzătorului/ Razitko prodejece/ Cap peruncit / Cap dari Toko Penjual / Cửa hàng bán đồng dấu/ Sattici Firmanın Kaşesi / Назва и адреса продавця / Печатка продавця / Печат на търговския обект / Печат на продавницата / Сатушының мөрі / Σφραγίδα καταστήματος / Ψαλιδωτή ημερ / 零售商的蓋印 / 販売店印 / 소매점 직인 / مهر خرده فرو / ختم بائع التجزئة و عنوانه

IMPORTANT SAFEGUARDS

When using electrical appliances, basic safety precautions should always be followed to reduce the risk of fire, electric shock, and/or injury to persons including the following:

- Read all instructions.
- Do not touch hot surfaces. Use handles or knobs.
- To protect against fire, electric shock and injury to persons, do not immerse cord, plugs or machine in water or other liquid.
- Close supervision is necessary when any appliance is used by or near children.
- Unplug from outlet when not in use and before cleaning. Allow to cool before putting on or taking off parts, and before cleaning the appliance.
- Do not operate any appliance with a damaged cord or plug or after the appliance malfunctions, or has been damaged in any manner. Return appliance to the nearest authorized service facility for examination, repair or adjustment.
- The use of accessory attachments not recommended by the appliance manufacturer may result in fire, electric shock or injury to persons.
- Do not use outdoors.
- Do not let cord hang over edge of table or counter, or touch hot surfaces.
- Do not place on or near a hot gas or electric burner, or in a heated oven.
- Always attach plug to appliance first, then plug cord into the wall outlet. To disconnect, turn any control to the “off” position, then remove plug from wall outlet.
- Do not use appliance for other than intended use.
- The container is designed for use with this appliance. It must never be used on a range top.
- Do not place a hot carafe on a wet or cold surface.
- Do not use a cracked container or a container having a loose or weakened handle.
- Do not clean container with cleansers, steel wool pads, or other abrasive material.
- Scalding may occur if the lid is removed during the brewing cycles.

SAVE THESE INSTRUCTIONS CAUTION

This machine is intended for household use only. Any servicing other than cleaning and user maintenance should be performed by the nearest authorized KRUPS Service Center. Visit our website at www.krupsusa.com in the USA or www.krups.ca in Canada or contact your respective country's Consumer Service department for the service center nearest you, or contact your respective country's Consumer Service department. To reduce the risk of fire or electric shock, do not attempt to disassemble the machine.

Repair should be done by an authorized KRUPS Service Center only.

SHORT CORD INSTRUCTIONS


- A** A short power cord or a detachable power cord is provided to reduce the risks of becoming entangled in or tripping over a longer cord accidentally.

- B** Longer detachable power cords or extension cords are available and may be used if care is exercised in their use.
- C** If a long detachable power cord or an extension cord is used:
- 1)** the marked electrical rating of the detachable power cord or extension cord should be at least as great as the electrical rating of the appliance.
 - 2)** If the appliance is of the grounded type, the extension cord should be a grounding type 3-wire cord.
 - 3)** the longer cord should be arranged so that it will not drape over the counter where it can be pulled on by children or tripped over accidentally. The appliance may have a polarized plug (one blade is wider than the other). To reduce the risk of electric shock, this plug is intended to fit into a polarized outlet only one way. If the plug does not fit fully into the outlet, reverse the plug. If it still does not fit, contact a qualified electrician. Do not attempt to modify the plug in anyway.

ADDITIONAL SAFETY INSTRUCTIONS

- This appliance is not designed to be used by children or people without knowledge or experience with the product, unless they are supervised or given prior instructions concerning the use of the appliance by someone responsible for their safety.
- Burns can occur from touching hot plate, hot water or steam. Exercise caution.
- All machines are subject to stringent quality control. Practical tests using machines taken at random are conducted and this may explain any slight marks or coffee residue showing prior to use.
- Do not pour liquids other than water and descaling solutions specified in this manual into the water tank.
- Protect the machine against humidity and freezing.
- Do not pour water into the appliance if it is still hot.
- Always place your coffee maker on a flat, stable, heat resistant work surface away from water splashes and any external sources of heat.
- Never place your carafe or your insulated pot in a microwave oven, in a dishwasher or on a stove top.
- Never put your hand inside the insulated pot.
- Do not use the carafe or the insulated pot without the lid.
- Do not use the thermal carafe if the glass inner part inside is broken. If the glass inner part of the carafe is broken, pieces of glass can transfer to your cup.
- In the interest of improving products, KRUPS reserves the right to change specifications without prior notice.
- A short power supply cord is provided to reduce the hazards resulting from becoming entangled in or tripping over a long cord.
- This appliance is not intended for use by persons (including children) with reduced physical, sensory or mental capabilities, or lack of experience and knowledge, unless they have been given supervision or instruction concerning use of the appliance by a person responsible for their safety. Children should be supervised to ensure that they do not play with the appliance.

DESCRIPTION

a	Main body	h	Power 
b	Lid	i	Program 1 
c	Tank	j	Program 2 
d	Filter holder	k	Hours button: H
e	Water level (x2)	l	Minutes button: MIN
f	Warming plate	m	Timer
g	10 cup glass coffee pot	n	Permanent filter

CAUTION: the safety precautions are part of the appliance. Read them carefully before using your new appliance for the first time. Keep them in a place where you can find and refer to them later on.

This product has been designed for domestic use only. Any commercial use, inappropriate use or failure to comply with the instructions, the manufacturer accepts no responsibility and the guarantee will not apply.

BEFORE FIRST USE

- Remove any packaging, stickers or accessories whether inside or outside of the appliance.
- When using your filter coffee maker for the first time, do not add coffee and rinse using the equivalent of a jug of water (maximum 35 fl. oz).
- The glass coffee pot is dishwasher safe but not microwave safe.

SETTING THE TIME

Follow figures 9 to 10:

- Plug in the coffee maker, the timer (m) will start to flash.
- Press the “H” button (k) to set the hours.
- Press the “MIN” button (l) to set the minutes.
- To scroll faster through the hours and minutes, keep the relevant button pressed down.
- The setting will automatically validate itself after approximately 5 seconds.

Note: You can adjust or change the time. You can adjust the time setting by using the H and Min. buttons.

MAKING COFFEE


Follow figures 1 to 6:

- Use only cold water and #04 paper filters or permanent filter.
- The anti-drip system allows you to remove the coffee pot to pour yourself a coffee before the end of the cycle.
- Replace the coffee pot as quickly as possible to avoid the filter holder from overflowing.
- Do not exceed the maximum quantity of water.



- Place the ground coffee directly inside the permanent filter or the paper filter. The filter holder has 2 positions - open and closed. Make sure that the filter holder has been properly locked: the arrow and the lock icon must be facing each other. After use, throw away the coffee grounds and rinse the filter holder under running water.
- The recommended amount of coffee grounds is a level teaspoon (provided) for standard grounds (do not exceed 10 spoons).

Note : The quantity of coffee brewed will be less than the quantity of water poured into the coffee machine; approximately 10% of this water will be absorbed by the ground coffee and filter.












Your coffee maker is equipped with an automatic stop system.



- The appliance will stop automatically approximately 30 minutes after the end of the cycle.
- The appliance may also be switched off at any time by pressing the «  » button (h).




Manual mode:

- Press the «  » button (h), the light will turn on and there will be a “beep” to signal that the coffee maker has started up.
- To stop the coffee maker, again press the «  » button. The light will turn off and there will be two “beeps”.

Programming mode Fig. 11 and 12:

- Your appliance is equipped with two programming buttons  , allowing you, for example, to set one time during the week and another at the weekend. The two programming buttons function in the same way.
- Press the  or , button and the timer will start to flash. If no setting is selected within 10 seconds, the timer will go back to the current time.
- Enter the time using the “H” (hours) and “MIN” (minutes) buttons. If no other action is taken, the time entered will be automatically saved after approximately 5 seconds. The timer will then go back to the current time.
- Once programming is complete, the   button used will remain lit.
- You can check or change the programming time whenever you like by once again pressing the  or  button.
- At the programmed time, the coffee maker will turn itself on. Buttons  or  and «  » will light up.

WARNING: The set program is automatically deactivated at the end of the coffee cycle; however, the set time is saved. Reactivate the set program every day by pressing on the button  or . In order to set a different time, please refer to paragraph “Using the appliance in the Program Mode”.

- Press the «  » button to stop the cycle.
- You can cancel the programming at any time by pressing buttons  or  for more than 2 seconds.

CLEANING

- Unplug the appliance.
- Let the appliance cool down before cleaning it.
- To remove the filter holder, make sure that it is in the correct position (**Fig. 7**).
- Throw the coffee grounds into the garbage (**Fig. 8a** and **Fig. 8b**).
- Clean with a damp cloth or sponge.

- Never immerse the appliance in water or under running water.
- The coffee pot, lid, spoon and filter holder are all dishwasher safe.

DESCALING

Why descale

- The scale is naturally deposited in your coffee maker. Descaling preserves the coffee maker and ensures it a longer life. Descaling ensures a consistent quality of coffee. The scale may permanently deteriorate the performance of the machine. The guarantee does not cover appliances which become faulty because the descaling operations have not been carried out regularly.

When to descale

- The frequency of descaling depends on the water hardness and the number of coffee cycles. When the following signs are encountered: cycle time lengthened, high evaporation, high level of noise at the end of cycle, stop during the cycle, it signifies that your machine is calcified.
- The descaling of the coffee maker must be between 20 and 30 cycles or once a month depending on the water hardness.


How to descale your KRUPS coffee maker

- Use the KRUPS® descaling solution diluted in 17 fl. oz of water or 8 fl. oz of commercially available white vinegar in 17 fl. oz of water or 1,5 oz of citric acid diluted in 17 fl. oz until complete dissolution of crystals.
- Pour the solution into the water tank (without coffee).
- Start the cycle (without coffee). After 2 min, manually stop the cycle. Leave it still for an hour. Restart the coffee to complete the cycle.
- To rinse the machine, run 2 cycles with water but no coffee.
- Repeat the operation if necessary.
- **The guarantee does not cover coffee makers which are not working or which are working poorly due to failure to regularly descale the machine.**

ACCESSORIES

- Glass coffee pot

TROUBLESHOOTING

PROBLEM	SOLUTION
The coffee does not brew or the machine does not switch on.	<ul style="list-style-type: none"> ■ Check to ensure the appliance is plugged into a working outlet. ■ The  button is lit. ■ The water tank is empty. ■ There was a power failure. ■ There was a power surge. Unplug the machine, then plug it back in. ■ The clock must be reset after a power failure.

PROBLEM	SOLUTION
Appliance appears to be leaking.	<ul style="list-style-type: none"> ■ Make sure that the water tank has not been filled beyond the max fill level.
It takes a long time to brew.	<ul style="list-style-type: none"> ■ It may be time to descale your coffee dispenser. ■ Numerous minerals may accumulate in the coffee maker's circuit. Periodic descaling of the machine is recommended. More frequent descaling may be necessary depending on the hardness of the water. For more information, refer to the "Descaling" section. ■ NOTE: do not dismantle the machine.
The filter holder overflows or the coffee drips too slowly.	<ul style="list-style-type: none"> ■ Excessive amount of coffee. We recommend that you use one measuring spoon or one tablespoon of coffee ground per cup. ■ Coffee grind is too fine (beans ground for an Espresso maker are not suitable for drip coffee makers). ■ Some coffee grounds have seeped in between the paper filter or permanent filter and the filter holder. ■ The permanent filter or the paper filter is not open or is incorrectly positioned. ■ Rinse out the filter holder before putting in the paper filter so that its edges stick to the damp sides of the filter. ■ The coffee pot has not been correctly placed on the warming plate. ■ The coffee pot was removed for too long during the preparation cycle or was not correctly placed back onto the warming plate. ■ More than one paper filter in basket.
The coffee has a bad taste.	<ul style="list-style-type: none"> ■ The coffee dispenser needs to be cleaned. ■ The coffee grounds are not suited to your coffee dispenser. ■ The proportion of coffee to water is inadequate. Adjust it to suit your taste. ■ The quality and freshness of the coffee are not optimal.

END-OF-LIFE ELECTRONIC OR ELECTRICAL APPLIANCES



Think of the environment!

- ① Your appliance contains a number of materials that may be recovered or recycled.
- ➡ Leave it at a local civic waste collection point.

KRUPS INTERNATIONAL LIMITED GUARANTEE



: www.krups.com

This product is repairable by KRUPS during and after the guarantee period. KRUPS endeavours to keep most of the stock of the spare parts available for the repair of your product for up to 5 to 7 years on average, from the last date of production. Accessories, consumables and end-user replaceable parts can be purchased, if locally available, as described on the KRUPS internet site www.krups.com

The Guarantee

This product is guaranteed by KRUPS (company address and details included in the country list of the KRUPS International Guarantee) against any manufacturing defect in materials or workmanship for a period of 2 years starting from the initial date of purchase.

The international manufacturer's guarantee by KRUPS is an extra benefit which does not affect consumer's Statutory Rights.

The international manufacturer's guarantee covers all costs related to restoring the proven defective product so that it conforms to its original specifications, through the repair or replacement of any defective part and the necessary labour. At KRUPS's choice, a replacement product may be provided instead of repairing a defective product. KRUPS's sole obligation and your exclusive resolution under this guarantee are limited to such repair or replacement.

Conditions & Exclusions

The international KRUPS guarantee only applies within the guarantee period and for those countries listed in the country list attached and is valid only on presentation of a proof of purchase. The product can be taken directly in person to an authorised service centre or must be adequately packaged and returned, by recorded delivery (or equivalent method of postage), to a KRUPS authorised service centre. Full address details for each country's authorised service centres are listed on KRUPS website (www.krups.com) or by calling the appropriate telephone number as set out in the country list to request the appropriate postal address.

KRUPS shall not be obliged to repair or replace any product which is not accompanied by a valid proof of purchase.

This guarantee will not cover any damage which occurs as a result of misuse, negligence, failure to follow KRUPS instructions, use on current or voltage other than as stamped on the product, or a modification or unauthorised repair of the product. It also does not cover normal wear and tear, maintenance or replacement of consumable parts, or the following:

- using the wrong type of water or consumable
- ingress of water, dust or insects into the product
- scaling (any de-scaling must be carried out according to the instructions for use)
- mechanical damages, overloading
- damages or poor results due to wrong voltage or frequency
- accidents including fire, flood, thunderbolt, etc
- professional or commercial use
- damage to any glass or porcelain ware in the product

This guarantee does not apply to any product that has been tampered with, or to damages incurred through improper use and care, faulty packaging by the owner or mishandling by any carrier.

In order to offer the best possible after-sales service and constantly improve customer satisfaction, KRUPS may send a satisfaction survey to all customers who have had their product repaired or exchanged in a KRUPS authorised service centre.

The international KRUPS guarantee applies only for products purchased in one of the countries listed, and used for domestic purposes only in one of the countries listed on the Country List. Where a product purchased in one listed country and then used in another listed country:

- a) The international KRUPS guarantee does not apply in case of non conformity of the purchased product with the local standards, such as voltage, frequency, power plugs, or other local technical specifications
- b) The repair process for products purchased outside the country of use may require a longer time if the product is not locally sold by KRUPS
- c) In cases where the product is not repairable in the new country, the international KRUPS guarantee is limited to a replacement by a similar product or an alternative product at similar cost, where possible.

Consumer Statutory Rights

This international KRUPS guarantee does not affect the statutory rights a consumer may have or those rights that cannot be excluded or limited, nor rights against the retailer from which the consumer purchased the product. This guarantee gives a consumer specific legal rights, and the consumer may also have other legal rights which vary from State to State or Country to Country. The consumer may assert any such rights at his sole discretion.

**** Please keep this document for your reference should you wish to make a claim under the guarantee*

KRUPS INTERNATIONAL GUARANTEE: COUNTRY LISTwww.krups.com

			
ARGENTINA	0800-122-2732	INDONESIA	+62 21 5793 7007
ՀԱՅԱՍՏԱՆ ARMENIA	010 55-76-07	ITALIA ITALY	1 99 207 701
AUSTRALIA	1 300 307 824	日本 JAPAN	0570-077772
ÖSTERREICH AUSTRIA	01 890 3476	الأردن JORDAN	4629700
البحرين BAHRAIN	17291537	ҚАЗАҚСТАН KAZAKHSTAN	727 378 39 39
БЕЛАРУСЬ BELARUS	017 2239290	한국어 KOREA	1588-1588
BELGIQUE BELGIE BELGIUM	070 23 31 59	الكويت KUWAIT	24831000
BOSNA I HERCEGOVINA	Info-linija za potrošače 033 551 220	LATVJA LATVIA	6 616 3403
BRASIL BRAZIL	11 2915-4400	لبنان LEBANON	1364392
БЪЛГАРИЯ BULGARIA	0700 10 330	LIETUVA LITHUANIA	5 214 0057
CANADA	1-800-418-3325	LUXEMBOURG	0032 70 23 31 59
CHILE	12300 209207	МАКЕДОНИЈА MACEDONIA	(02) 20 50 319
COLOMBIA	018000520022	MALAYSIA	603 7802 3000
HRVATSKA CROATIA	01 30 15 294	MEXICO	(01800) 112 8325
ČESKÁ REPUBLIKA CZECH REPUBLIC	731 010 111	MOLDOVA	22 929249
DANMARK DENMARK	44 663 155	NEDERLAND The Netherlands	0318 58 24 24
مصر EGYPT	16622	NEW ZEALAND	0800 700 711
EESTI ESTONIA	668 1286	NORGE NORWAY	815 09 567
SUOMI FINLAND	09 622 94 20	عمان سلطنة OMAN	80075000
France Continentale + Guadeloupe, Martinique, Réunion, Saint-Martin	09 74 50 10 61	POLSKA POLAND	801 300 420 koszt jak za połączenie lokalne
DEUTSCHLAND GERMANY	0212 387 400	PORTUGAL	808 284 735
ELLADA GREECE	2106371251	قطر QATAR	44485555

			
香港 HONG KONG	852-8137 0128	REPUBLIC OF IRELAND	01 677 4003
MAGYARORSZÁG HUNGARY	06 1 801 8434	ROMANIA	0 21 316 87 84
السعودية العربية المملكة SAUDI ARABIA	920023701	РОССИЯ RUSSIA	495 213 32 28
SRBIJA SERBIA	060 0 732 000	SUISSE SCHWEIZ SWITZERLAND	044 837 18 40
SINGAPORE	6550 8900	ประเทศไทย THAILAND	02 769 7477
SLOVENSKO SLOVAKIA	232 199 930	TÜRKIYE TURKEY	444 40 50
SLOVENIJA SLOVENIA	02 234 94 90	المتحدة العربية الامارات UAE	8002272
SOUTH AFRICA	0100202222	Україна UKRAINE	044 300 13 04
ESPAÑA SPAIN	902 31 23 00	UNITED KINGDOM	0345 330 6460
SVERIGE SWEDEN	08 594 213 30	U.S.A.	800-526-5377
		VENEZUELA	0800-7268724