

QWERKY  TOYS

Qwerkywriter™
TYPEWRITER-INSPIRED WIRELESS MECHANICAL KEYBOARD

Quick Start Guide



QWERYWRITER KEYBOARD



US Keyboard Layout



UK Keyboard Layout

Contents and Introduction

Contents

Contents & Introduction	4
Product Features	5
Charging your Qwerkywriter	6
Connecting Wirelessly	7
Operating Systems	8
Multi-Function Macro Key Return Bar	10
Default Functions	11
Set Up & Contact	12
Warranty	13

THANK YOU FOR YOUR PURCHASE AND ENJOY YOUR TYPING EXPERIENCE WITH THE QWERKYWRITER!



Product Features



Integrated Tablet Stand




The Qwerkywriter features an integrated tablet stand that can support a wide range of tablets up 5/8" thick and up to 10 1/2" wide



Qwerky Key





The  button serves as either the WIN button for Windows or the CMD button for MacOS



LED's Explained



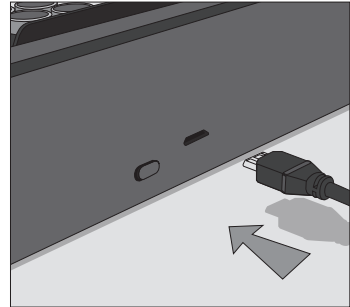
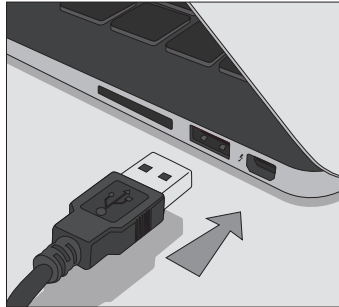
There are three LED lights in the upper right corner

1. **A** is CAPS LOCK
2.  is Bluetooth pairing, Return Bar Macro Record Indicator & Changes to Sleep Mode
3.  will light when charging and blink if battery power is low

Charging Your Qwerkywriter



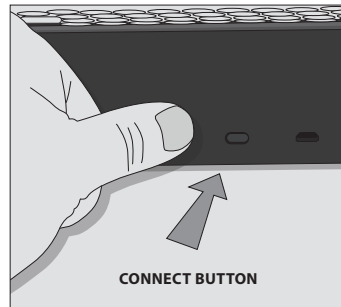
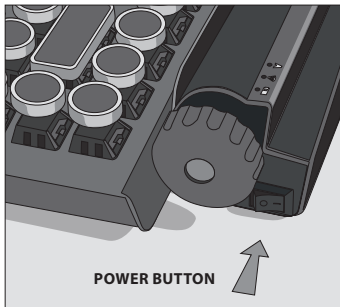
- Your Qwerkywriter has a rechargeable battery that lasts up to 3 months
- To charge, plug in the included Micro-USB cable to any USB hub or powered USB port
- Plug in for 2-3 hours for a full charge
- The red LED light will turn off after it's fully charged or blink when it needs to be charged



Connecting Wirelessly



- Turn the Qwerkywriter Power to ON
- Press the Qwerkywriter Connect button
- Follow the directions for either iOS, MacOS, Android, or PC
- The name of the device will appear as either 'QWERKYWRITER' or a series of numbers

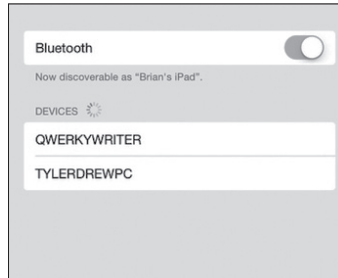


Operating Systems



iOS - iPhone/iPad

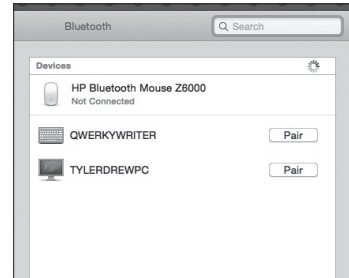
Enable Bluetooth under Settings



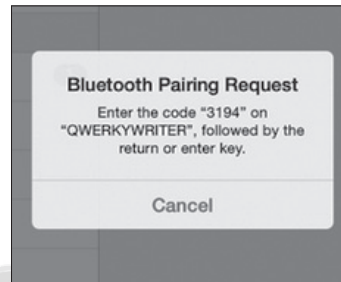
Find the keyboard by selecting Settings>Bluetooth>My Devices

MacOS

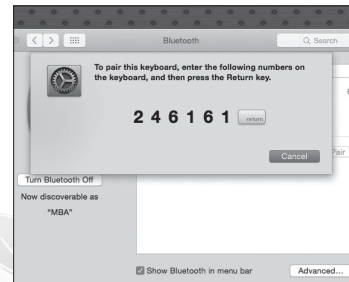
Navigate to System Preferences>Bluetooth
Select device from list, then click Pair



The keyboard will appear in Devices



Enter the 4-6 digit code



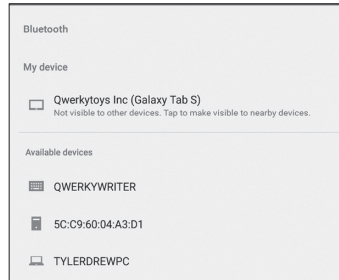
Enter the 4-6 digit code

Operating Systems (cont)

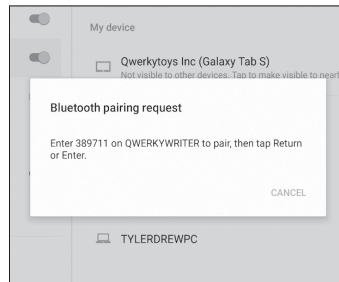


Android

Navigate to Settings>Connections>Bluetooth
Select device from list, then click Pair



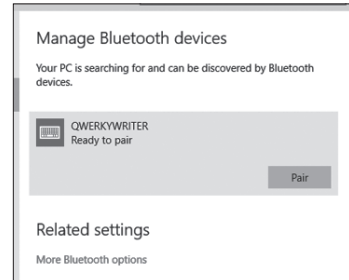
Find the keyboard in Available Devices



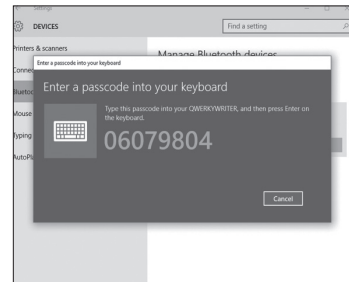
Enter the 4-6 digit code

PC

Navigate to Start>Control Panel>Hardware and Sound>Bluetooth Devices



Find the keyboard in Manage Bluetooth Devices



Enter the 4-6 digit code

QWERKYWRITER KEYBOARD

Multi-Function Macro Key Return Bar



- The Qwerkywriter has a macro programmable return bar
- Program up to 5 characters or any key combination shortcuts

Programming your Return Bar

1. Press Function key (FN) plus Return Bar
2. Green LED light will blink indicating your keyboard is ready for programming
3. Type up to 5 characters
4. Press Function key (FN) plus Return Bar again
5. Your Return Bar is now programmed



Default Function



Sleep Function

The Qwerkywriter sleep settings are programmable

- The factory setting is 10 mins for the sleep function
 - FN + F8 = Set sleep mode time to 10 mins
 - FN + F9 = Set sleep mode time to 20 mins
 - FN + F10 = Set sleep mode time to 30 mins
 - FN + F11 = Disable sleep mode function
- After the key combination is pressed the middle green LED will light up indicating the sleep mode is changed to the new setting
- Even if the Qwerkywriter is powered off the sleep setting will remain the same

The F keys for Mac, iOS and Android now have the default functions when pressed.

F1 - Decreases Brightness
F2 - Increases Brightness
F7 - Last Track
F8 - Play/Pause
F9 - Next Track
F10 - Mute
F11 - Decrease Volume
F12 - Increase Volume

There are also FN multimedia functions for Mac, Windows, iOS and Android:

FN + F1 = Decrease Volume
FN + F2 = Increase Volume
FN + F3 = Previous Track
FN + F4 = Play/Pause
FN + F5 = Next Track
FN + F12 = Home Button for iOS and
Android phones and tablets

Set Up & Contact



Set Up

We made setting up easy for you with a video tutorial.
www.qwerkywriter.com/pages/gettingstarted



Contact

Please visit Qwerkytoys.com where you can find our frequently ask questions page and our tips and tricks blog. If you have any problems, questions, or comments please contact us:

✉ support@qwerkytoys.com

🐦 twitter.com/qwerkywriter

📘 Facebook.com/qwerkytoys



Warranty



12 Months Limited Warranty

Qwerkytoys, Inc. ("Qwerkytoys") warrants only to the original purchaser of this product, when purchased from Qwerkytoys or an authorized reseller/distributor, that this product will be free from defects in material and workmanship under normal use and service for the length of the warranty period after purchase. Qwerkytoys reserves the right, before having any obligation under this warranty, to inspect the damaged Qwerkytoys product. Initial shipping costs of sending the product to the Qwerkytoys service center in Walnut Creek, California, for inspection shall be borne solely by the purchaser. In order to keep this warranty in effect, the product must not have been mishandled or misused in any way.

This warranty does not cover any damage due to normal wear and tear, defects or damage caused by misuse, accident (including without limitation collision, fire and the spillage of food or liquid), negligence, modification, improper and unauthorized repair, installation, wiring, or testing, improper storage, use in an unapproved device or if the serial number has been removed. Please have your order number and email ready. You will need it for any warranty service. In order to claim under this warranty, purchaser must make claim to Qwerkytoys and obtain an RMA # which is to be used within 15 days of issuance and must present acceptable proof of original ownership (i.e. match name on order and/or email receipt) for the product. Qwerkytoys, at its option, shall repair or replace the defective unit covered by this warranty. This warranty is non-transferable and does not apply to any purchaser who bought the product from a reseller or distributor not authorized by Qwerkytoys, including but not limited to purchases from internet auction sites. This warranty does not affect any other legal rights you may have by operation of the law. Contact support@qwerkytoys.com for warranty service procedures.

Warranty (cont)



For Warranty Service

In the event that warranty repair or replacement is necessary, please provide proof of purchase (order number and/or online receipt) in order to receive warranty service.

Within the first 30 days after purchase, please return your product to the reseller (if not from Qwerkytoys.com) for a replacement. If the product is still within warranty and you can no longer return it to your dealer, please contact Customer Support for assistance and instructions. Qwerkytoys will not accept returns without prior approval and an RMA number.

Contact:

✉ support@qwerkytoys.com





Qwertypewriter™

QWERKY  TOYS

©2017 Qwerkytoys, Inc.

Designed in Walnut Creek, CA.

Made in China.

All Rights Reserved and other trademarks
contained herein are the property of
Qwerkytoys, Inc.

Product may vary slightly from those pictured.

Protected by U.S. Patent No. D773,473 and
D775,136.

Qwerkytoys . com