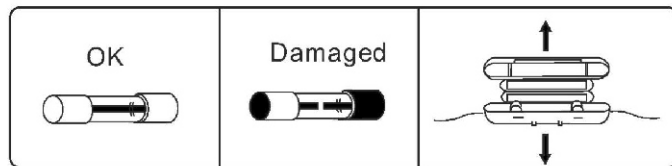


Important Notes about the Battery

1. Before operating the first time, open the seat and connect the power wires of the battery, connecting the red wire to the red connector, and the black wire to the black connector. Incorrect connection, will cause short circuit or malfunction.
2. Charge the motorcycle when its speed becomes slow. Battery will be damaged if it is fully drained.
3. If out of use for a long period of time, charge the battery fully before next use. Charge at least every 2 months to extend battery life.
4. The vehicle should be in a well-ventilated place during charging, and it is normal for the charger and battery to heat up during charging.
5. Don't burn or disassemble the battery. Recycle appropriately.
6. Only use manufacturer approved charger and battery.

Fuse Replacement

Only use 15A fuse to replace a damaged one. Use caution when replacing the fuse, as short circuiting can lead to a fire.



Important Notes

1. Assembly should be done by an adult.
2. This vehicle should only be used under the supervision of an adult. It should not be used on streets, roads, steps on slopes, or near other vehicles, and there should only be one rider at a time.
3. Not for children under 3 years old.
4. Teach each rider how to operate the pedal, switches and motorcycle before use.
5. Do not operate the vehicle in rain, snow or inclement weather.
6. Turn off the power switch when the vehicle is not in use or being charged.
7. Only clean the vehicle with a dry cloth, not water or other liquids.
8. Electric cable, plug and other parts of the charger should be checked frequently.
9. Don't change the forward and backward switch while the vehicle is moving, or the gearbox will be damaged.



Lil' Rider 3 Wheel Battery Powered FX Sport Bike

Models #80-KB901 & 80-109



Instruction Manual

For help assembling this vehicle, reference TMKGL on YouTube.com and access the 80-109 Lil' Rider 3 Wheel Battery Powered FX Sport Bike Video.

<https://www.youtube.com/user/TMKGL>

Specifications

Battery: 6V, 4.5AH

Age Limit: 3-5 years old

Maximum Weight: 66 lbs.

Speed: 2-2.5 miles/hour

Dimensions: 34.5 in. x 15 in. x 22.5 in.

Charger: Input AC 110V 60HZ, Output DC 6V 500MA

Battery Charge Time: 8-12 hours, but do not exceed 15 hours

Battery Duration Time: 1-2 hours if fully charged

Function and Operation

1. To operate the vehicle, step on the pedal on the right side of the middle console to move the motorcycle. Release the pedal to stop.
2. Use the forward and backward switch to move the motorcycle forward or backward. When the motorcycle moves, the head lights will shine.

Charging Instructions

Before operating the first time, confirm the red wire is connected to the red connector on the battery, and the black wire is connected to the black connector on the battery. The charging socket is in the rear of the vehicle underneath the back and just below the seat. Normal charging time is 8-12 hours, but should not exceed 15 continuous hours.

Troubleshooting

Malfunction	Possible Causes
Vehicle won't move	Remove the seat and see if the battery or fuse is damaged. If so, replace it. Check to ensure the battery wires are securely connected. Check if the motor or gearbox are damaged, or if the motorcycle has a short circuit or the cable is disconnected.
Vehicle moves slowly	Check if the battery is fully charged, or if the gearbox is damaged.
Vehicle can't be charged	Check if the fuse is damaged, or if the charger or battery is damaged.
Unusual sound	Check if the gearbox is damaged.

9. Flip the vehicle body upright, and remove the front wheel shaft from the front of the vehicle.
10. Take the front fork and pull the wire connecting the front light out, so it is easily visible. Attach the panel board between the handlebars, by threading the front wheel shaft through the hole in the panel board, into the hole on the front of the vehicle body. Make sure you can access the wire of the front lights, so it can be connected to the vehicle body. Secure the front wheel shaft with the nut on the bottom of the vehicle. Make sure to push the front wheel shaft all the way down.

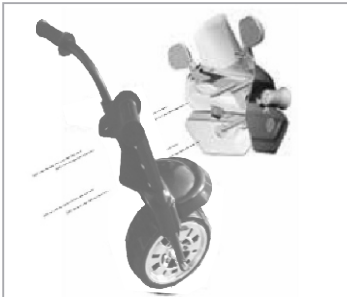


11. In the center of the vehicle body, underneath the seat, make sure the red wire is connected to the red connector on the battery, and the black wire is connected to the black connector on the battery.



12. Attach the seat using the screw in the back hole on the vehicle body.

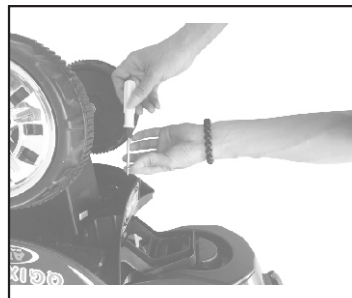
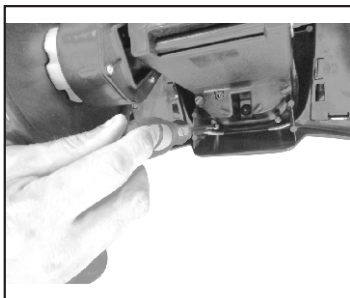
- Attach the front fork to the car head by removing the 4 screws in the 4 plastic points under the windshield. After connecting the front fork to the car head, put the screws back in through the fork into the 4 plastic points.



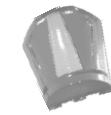
- Take the vehicle body and turn it over. Remove the screws at the back, just above the 2 rear tires.
- Attach the top cover of the tool box to the bottom cover of the tool box using the thin axle to thread them together.



- Flip the tool box over and using the screws removed from the vehicle body, attach the tool box.



Parts Listing



Top cover of tool box



Bottom cover of tool box with tool box support



Thin axle connecting tool box cover



Seat



Windshield



Mirror -2pcs



Car head



Front fork



Front fender



Front wheel



Front wheel shaft



Charger



Bodywork

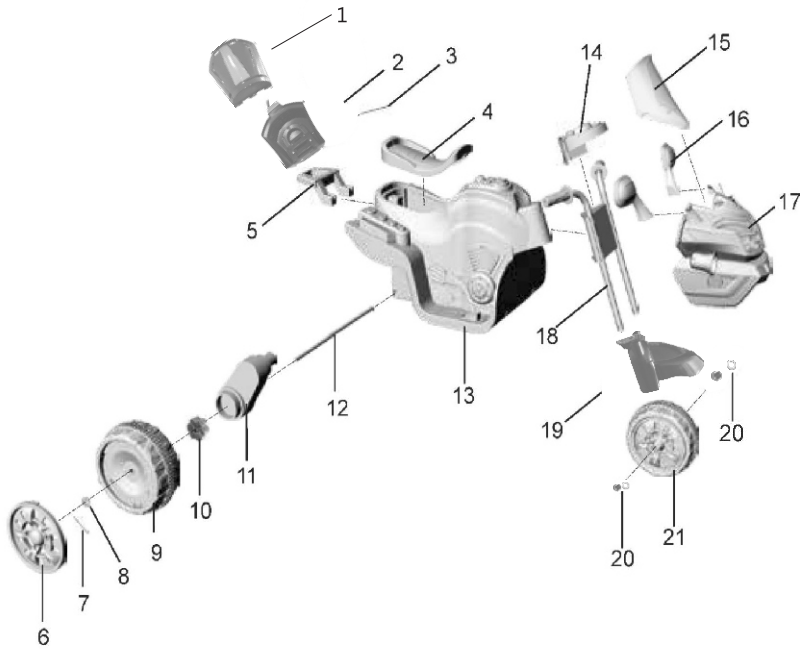


Panel board



Sticker

Parts Diagram



1 Top cover of tool box	8 Iron washer	16 Mirror -2
2 Bottom cover of tool box	9 Rear wheel -2	17 Car head
3 Thin axle connecting tool box cover	10 Plastic sleeve pipe	18 Front fork
4 Seat	11 Motor	19 Front fender
5 Tool box support	12 Rear shaft	20 Iron buckle
6 Rear wheel cover -2	13 Bodywork	21 Front wheel
7 Iron pin -2	14 Panel board	
	15 Windshield	

Assembly

1. Attach the front fender to the front fork by sliding the legs of the front fork through the holes of the front fender. Make sure to position the fender according to the picture below Step #2.
2. Underneath the front fender, attach the front fork to the unassembled tire using the metal rod to secure the fork on each side of the tire, and finishing with an iron buckle on the side.



3. Take the car head and remove the screws. On the sides of the car head, attach the two side mirrors using the screws.
4. Attach the windshield to the car head using 5 screws removed from the car head.

