

CREATIVE

Sound
BLASTER®

AUDIGY Fx™



BLASTER

AUDIGY Fx

User's Guide

PCIe Sound Card

Model No.: SB1570

Introduction

Congratulations on your purchase of Creative's latest audio revolution, Sound Blaster Audigy Fx! With cutting edge technology from the leaders in PC audio, Sound Blaster Audigy Fx will give you years of reliable entertainment on your PCI Express (PCIe[®]) enabled personal computer.

This User Guide contains software installation and usage information for your audio card.

System Requirements

Minimum Requirements

- Intel[®] Core™2 Duo or AMD[®] processor equivalent (Core™2 2.0 GHz, AMD processor equivalent or faster recommended)
- Intel or AMD compatible motherboard
- Microsoft[®] Windows[®] 8 32-bit or 64-bit; Windows 7 32-bit or 64-bit; Windows Vista 32-bit or 64-bit
- 1 GB RAM
- >600 MB of free hard disk space
- Available PCI Express slot*
- CD or DVD drive for software installation
- High quality headphones or powered amplified speakers (available separately)

Additional Requirements (where applicable)

DVD-Video

- 6x or faster DVD drive
- DVD player software such as InterVideo[®] WinDVD[®] or CyberLink[®] PowerDVD[®] (latest version recommended) installed.
- 5.1 speakers for optimal listening experience

Note

- *Some motherboards reserve the PCI Express x16 slots for video cards only. Use a x1 or x4 slot instead. For more information, consult the documentation of your motherboard.
- Other applications may have higher system requirements. For more information, consult the documentation of your application.

About Your Hardware

For instructions on installing your Sound Blaster Audigy Fx audio card, consult the Quick Start leaflet. To learn more about your product, consult the following section:

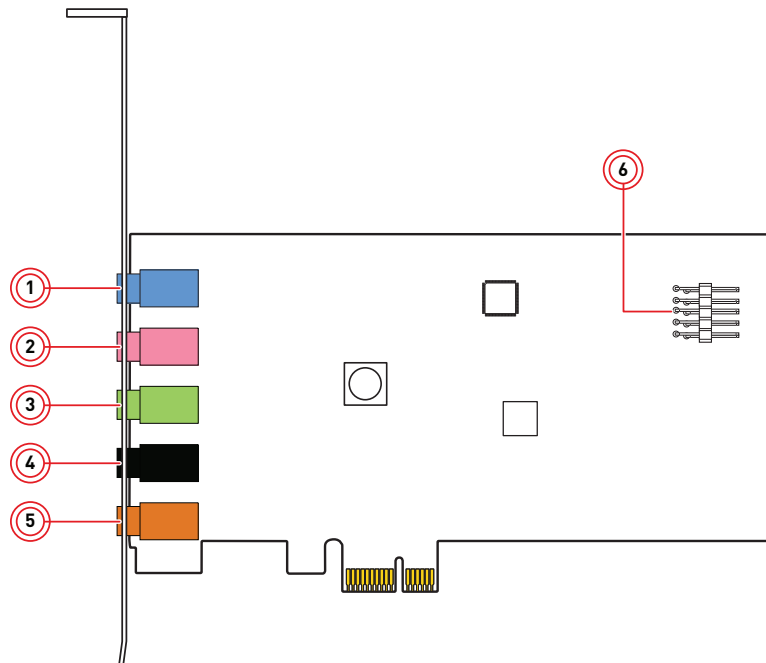
Note

Actual products may differ slightly from those shown in this chapter.

Your Sound Blaster Audigy Fx Audio card

Your Sound Blaster Audigy Fx audio card has the jacks and connectors below to enable the attachment of a wide variety of devices.

Model No.: SB1570



	Jack or Connector	Description
1.	Line In jack	Connects to line-level sources (for example, MP3 players).
2.	Microphone In jack	Connects to microphones with a 3.5mm (1/8-inch) plug.
3.	Headphone / Line Out 1 (Front L/R) jack	Connects to stereo headphones with a 3.5mm (1/8-inch) plug or Front Left and Front Right inputs on powered analog speakers or an A/V receiver.
4.	Line Out 2 jack (Rear L/R)	Connects to the Rear Left and Rear Right inputs on powered analog speakers or an A/V receiver.
5.	Line Out 3 jack (Center/Subwoofer)	Connects to the Front Center and Subwoofer inputs on powered analog speakers or an A/V receiver.
6.	Front Panel Header Audio connector	Connects to one end of the Intel Front Panel Audio cable (available separately). See Front Panel Header Audio Connector for specifications.

Connecting Speakers and Headphones

The connectors and associated components shown here may be different from that of your speaker system. Consult the documentation of your speaker system to identify similar input connectors. You can upmix your stereo sources (for example, CD Audio, MP3, WMA, MIDI and Wave) to enjoy multi-channel sound on your speakers or headphones.

To learn how to connect different types of speaker systems to your audio card, consult the following sections:

- Connecting Analog Speaker Systems
- Connecting Home Theater Systems
- Connecting Headphones and Headsets

For tips on how to arrange your speakers, consult **Positioning Your Speakers**.

Note

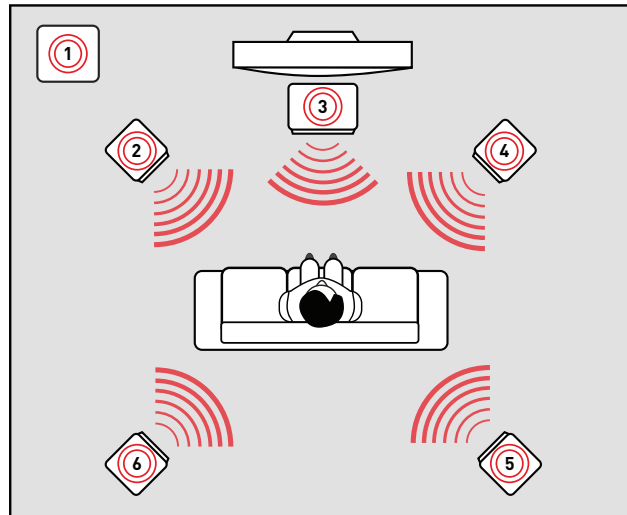
- Actual products may differ slightly from those shown in this chapter.
- Select the correct speaker setup or headphone option in the Sound Blaster Audigy Fx Control Panel to get the best experience. For more information, refer to their respective Online Help.
- The cables shown in this chapter may be bundled with your peripheral or are available separately

Positioning Your Speakers

Good speaker placement is crucial to getting optimal performance from your audio system and achieving an enhanced listening experience. Below are our recommendation for 5.1 channel speakers.

For detailed speaker placement tips, consult the documentation of your speaker system.

For 5.1 channel speakers:



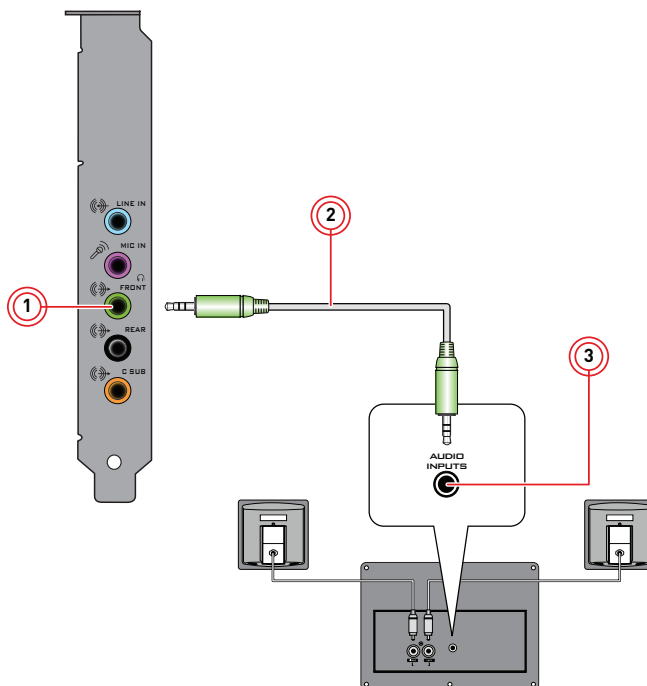
	Speaker Component
1.	Subwoofer
2.	Front left
3.	Front Center
4.	Front Right
5.	Rear Right
6.	Rear Left

Connecting Analog Speaker Systems

Your audio card supports analog speaker systems of up to 5.1 channels. To learn more about connecting different channel speaker systems, consult the following sections:

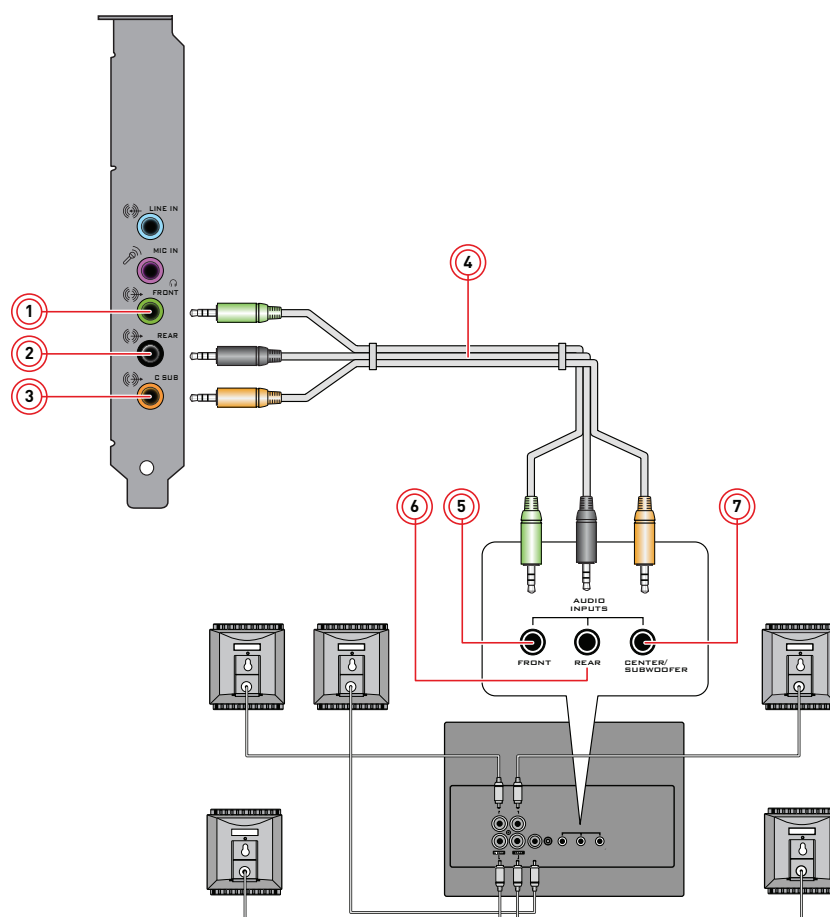
- 2.1 channel analog speakers
- 5.1 channel analog speakers

2.1 channel analog speakers



	Jack, Connector or Cable
1.	Headphone / Line Out 1 jack (Front L/R)
2.	2 channel audio cable (available separately)
3.	Audio Input jack

5.1 channel analog speakers



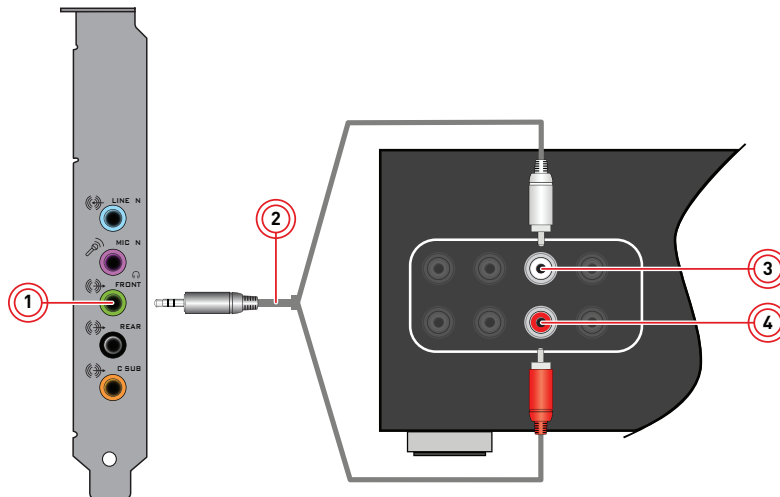
	Jack, Connector or Cable
1.	Headphone / Line Out 1 jack (Front L/R)
2.	Line Out 2 jack (Rear L/R)
3.	Line Out 3 jack (Center/Subwoofer)
4.	5.1 channel audio cable (available separately)
5.	Front (Audio Input) jack
6.	Rear (Audio Input) jack
7.	Center/Subwoofer (Audio Input) jack

Connecting Home Theater Systems

Most home theater systems connect the audio card to an A/V receiver. For more information on your A/V receiver's speaker connections, consult the documentation of your A/V receiver.

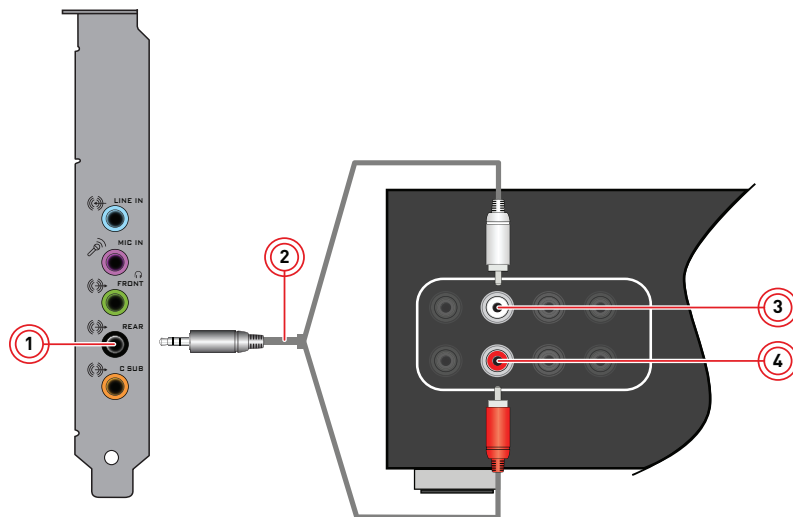
If your A/V receiver supports multi-channel line-level inputs, you can connect them directly to your audio card's Line Out jacks as shown below.

Connect to Headphone / Line Out 1 (Front L/R)



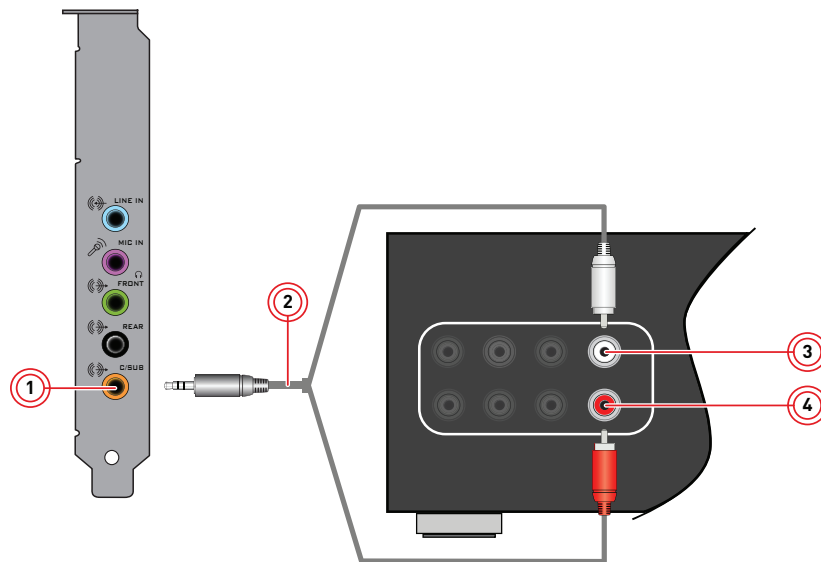
	Jack, Connector or Cable	Description
1.	Headphone / Line Out 1 jack (Front L/R)	Connects to the Front left and Front Right jacks on your A/V receiver, using a 3.5mm (1/8-inch) stereo-to-RCA cable (available separately).
2.	3.5mm (1/8-inch) stereo-to-RCA cable (available separately)	Connects your audio card and A/V receiver.
3.	Front Left jack	Connects to the Line Out 1 jack on your audio card, using a 3.5mm (1/8-inch) stereo-to-RCA cable (available separately).
4.	Front Right jack	Connects to the Line Out 1 jack on your audio card, using a 3.5mm (1/8-inch) stereo-to-RCA cable (available separately).

Connect Line Out 2 (Rear L/R)



	Jack, Connector or Cable	Description
1.	Line Out 2 jack (Rear L/R)	Connects to the Rear Left and Rear Right jacks on your A/V receiver, using a 3.5mm (1/8-inch) stereo-to-RCA cable (available separately)
2.	3.5mm (1/8-inch) stereo-to-RCA cable (available separately)	Connects your audio card and A/V receiver.
3.	Rear Left jack	Connects to the Line Out 2 jack on your audio card, using a 3.5mm (1/8-inch) stereo-to-RCA cable (available separately).
4.	Rear Right jack	Connects to the Line Out 2 jack on your audio card, using a 3.5mm (1/8-inch) stereo-to-RCA cable (available separately).

Connect Line Out 3 (Center/Subwoofer)



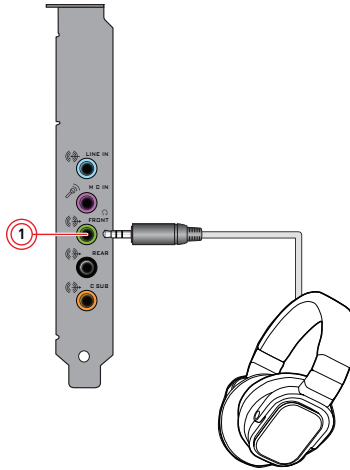
	Jack, Connector or Cable	Description
1.	Line Out 3 jack (Center/Subwoofer)	Connects to the Center and Subwoofer jacks on your A/V receiver, using a 3.5mm (1/8-inch) stereo-to-RCA cable (available separately)
2.	3.5mm (1/8-inch) stereo-to-RCA cable (available separately)	Connects your audio card and A/V receiver.
3.	Center jack	Connects to the Line Out 3 jack on your audio card, using a 3.5mm (1/8-inch) stereo-to-RCA cable (available separately).
4.	Subwoofer jack	Connects to the Line Out 3 jack on your audio card, using a 3.5mm (1/8-inch) stereo-to-RCA cable (available separately).

Connecting Headphones and Headsets

Do not listen to audio on your headphones or headsets at high volumes for prolonged periods of time as hearing loss may result.

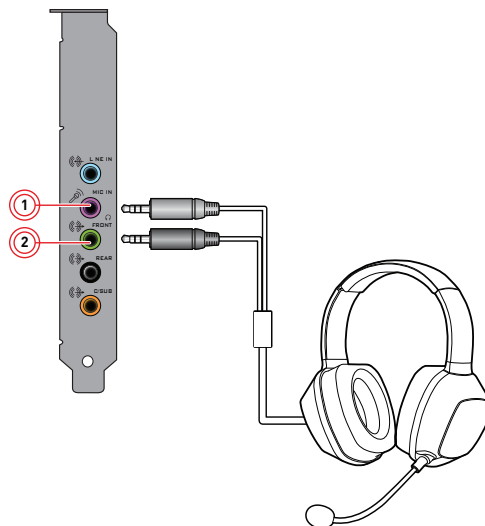
Connecting your headphones and headsets to the Sound Blaster Audigy Fx

For headphones:



	Jack, Connector or Cable	Description
1.	Headphone / Line Out 1 jack (Front L/R)	Connects to stereo headphones with a 3.5mm (1/8-inch) plug.

For headsets:



	Jack, Connector or Cable	Description
1.	Microphone In jack	Connects to microphones with a 3.5mm (1/8-inch) plug.
2.	Headphone / Line Out 1 jack (Front L/R)	Connects to stereo headphones with a 3.5mm (1/8-inch) plug or Front Left and Front Right inputs on powered analog speakers.

Installing and Uninstalling Software

To take full advantage of your Sound Blaster Audigy Fx audio card, you need to install device drivers and applications. At times, you may also need to uninstall some or all of the device drivers and applications to correct problems, change configurations, or upgrade outdated drivers or applications. To learn how to do so in all supported Windows operating systems, consult the following sections:

- Installing Drivers and Applications
- Uninstalling Drivers and Applications

Installing Drivers and Applications

Ensure that your audio card is installed before proceeding. For instructions on installing your audio card, consult your Quick Start leaflet.

After you have installed your audio card, turn on your computer. Windows automatically detects your audio card and searches for device drivers.

For Windows Vista / Windows 7:

1. Insert the Installation CD into your CD or DVD drive.
Your CD should start automatically. If it does not, follow the steps below:
 - i. Click **Start > Computer**.
 - ii. Right-click the CD or DVD drive icon, and then click **Open AutoPlay**.
2. To complete the installation, follow the instructions on the screen.
3. When prompted, restart your computer.

For Windows 8:

1. Insert the Installation CD into your CD or DVD drive.
2. In a short while, a drive icon will be displayed. Click on the icon, and then choose **Run setup.exe**.
If you do not see the drive icon, follow the steps below:
 - i. Right-click on the background of the Windows start screen, and then click **All apps**.
 - ii. Click **Computer**.
 - iii. Right-click the CD or DVD drive icon, and then click **Open AutoPlay**.
3. To complete the installation, follow the instructions on the screen.
4. When prompted, restart your computer.

Uninstalling Drivers and Applications

Before you begin, close all running audio applications. Applications that are still running during uninstallation will not be removed.

1. From the **Control Panel**, click **Uninstall a program**.
2. Select the **Sound Blaster Audigy Fx** entry.
3. Click the **Uninstall** button or option.
If the **User Account Control** dialog box appears, click the **Continue** button.
4. Click the **Yes** button.
5. When prompted, restart your computer.

After you have completed the steps above, you can install the original or updated device drivers and applications for Sound Blaster Audigy Fx. For instructions on installing the software, consult **Installing and Uninstalling Software**.

Using Your Sound Blaster Audigy Fx

Your Sound Blaster Audigy Fx works seamlessly with many external devices to perform different tasks. To learn more about these tasks and how to connect additional devices, consult the following sections:

- Playing Games
- Watching DVDs
- Creating Music

Note

- Actual products may differ slightly from those shown in this chapter.
- The cables shown in this chapter may be bundled with your peripheral or are available separately

Playing Games

Your Sound Blaster Audigy Fx is specially designed to enhance audio in games using Creative's cutting edge audio technologies. Playing games will be more exhilarating than ever before!

EAX ADVANCED HD

Make your games come alive with EAX[®] ADVANCED HD™ and immerse yourself in worlds that their creators envisioned!

Hear multiple audio effects being played simultaneously, and precise environment settings applied to them to create a life-like environment and heighten the sense of realism.

Each effect is also accurately positioned in its 3D environment, allowing you to tell where it is coming from relative to your location, and you will be able to discern where your teammates and enemies are using only these audio cues.

EAX ADVANCED HD is a weapon that will give you the competitive edge, especially in multiplayer games.

Creative ALchemy

Creative ALchemy is a powerful tool that restores the audio for a DirectSound[®] 3D game running on Windows Vista, Windows 7 or Windows 8 to its former glory - in full surround sound with hardware accelerated audio mixing, sampling rate conversion and EAX effects.

To learn how to connect your A/V receiver to your audio card, consult **Connecting Home Theater Systems**.

Watching DVDs

Your DVDs are encoded with Dolby Digital audio technologies, which have to be decoded to enjoy multi-channel audio on your 5.1 speaker systems.

You can use a software DVD player to decode Dolby Digital or DTS encoded signals from your DVDs, and output multi-channel audio through your audio card to your speakers.

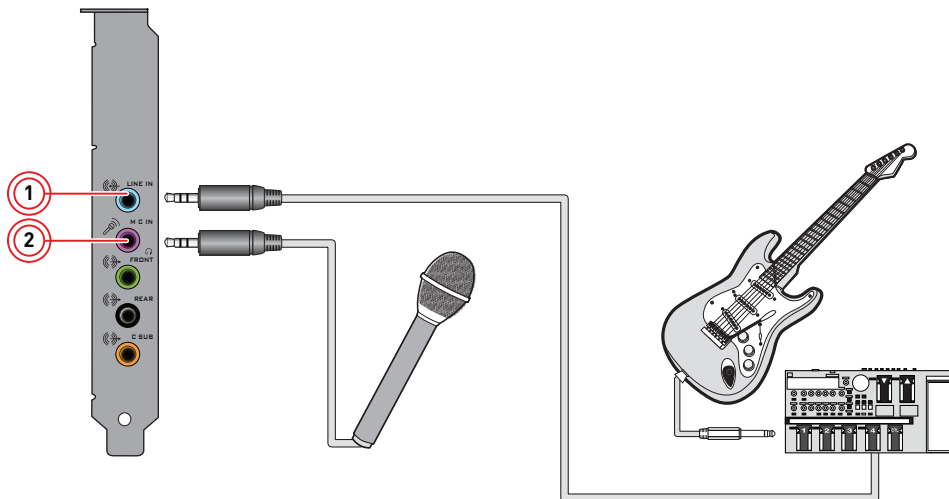
To do so, you need to install a software DVD player such as PowerDVD or WinDVD (latest version recommended).

Creating Music

You can set up a home music studio using your Sound Blaster Audigy Fx.

Put together your own productions consisting of multiple music tracks from a MIDI synthesizer or an electric guitar. Alternatively, connect your electric guitar using a pre-amp box to the Line In jack. Use a converter if your pre-amp box comes with a larger (for example, a 6.35mm (1/4-inch)) connector.


You can also connect a microphone to your Sound Blaster Audigy Fx.



	Jack, Connector or Cable	Description
1.	Line In jack	Connects to line-level sources (for example, electric guitar).
2.	Microphone In jack	Connects to microphones with a 3.5mm (1/8-inch) plug.

Using the Creative Software Suite

The following software is designed for you to access the basic as well as the advanced features of your audio card. We recommended that you familiarize yourself with their functions in order to make full use of the rich features of your audio card.

To learn more about each application, consult its Online Help. Depending on the application, you can do this by clicking  on the toolbar of the application, or selecting **Help Topics** from the **Help** menu.

Applications

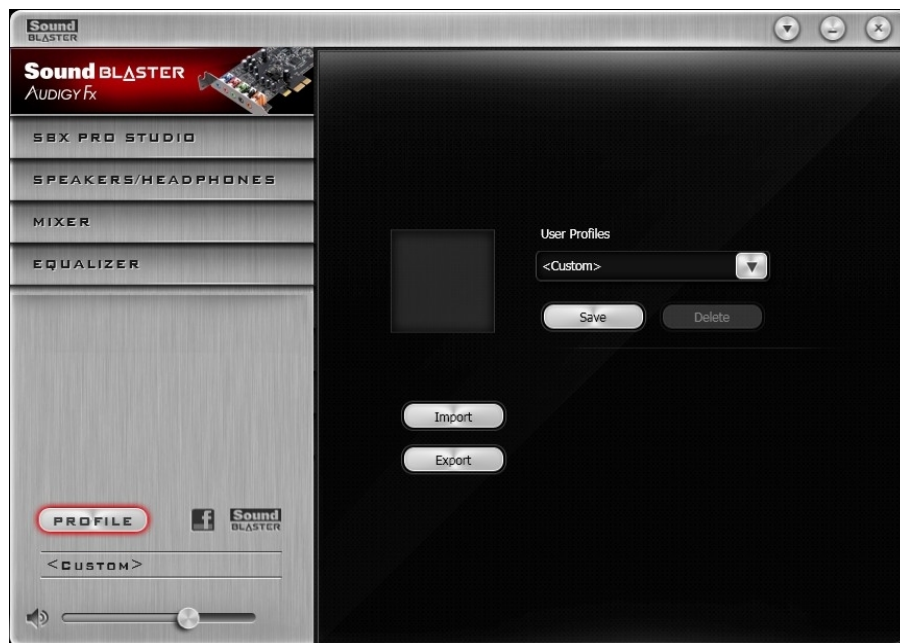
- Sound Blaster Audigy Fx Control Panel
- Creative ALchemy
- Creative Software AutoUpdate
- Creative Host OpenAL / EAX5.0 HD
- Creative Product Registration
- Creative Diagnostics

Various other bonus Creative applications are also compatible for your audio card.

Note

- The applications included with your audio card may differ from those described here. Your audio card may also come with third party applications.
- Some applications are available for certain operating systems or certain card models only.
- The color of Sound Blaster Audigy Fx Control Panel may differ for different sound cards.

Sound Blaster Audigy Fx Control Panel



Managing Your Profiles

Click the **PROFILE** button to display the Profiles pane.

Activate a profile by clicking the  and selecting it from the list.

Click **Save** to save all settings to the current profile or create a new profile. Click **Delete** to delete the active profile.

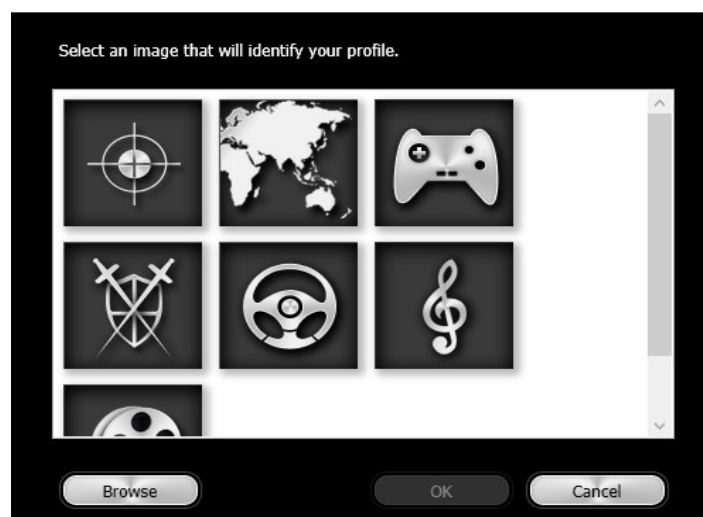


Sharing Profiles

You can export your custom settings and share them with others, or import other gamers' custom settings.

Customizing Your Avatar

You can customize the avatar for each profile. Double-click the current avatar to open the selection window. You can either select an avatar from the list or click **Browse** to select your own image file to be used as the avatar.



Adjusting Your Master Volume Settings

Drag the master volume slider to adjust the volume level. You can mute/unmute the volume by clicking the speaker icon.



Configuring Your Software Settings

Click each feature to access its settings page. More information on each feature can be found in their respective sections in this manual.



Configuring Your General Settings

Click  and configure various options from the list that displays including:



- Select whether the Sound Blaster Audigy Fx Control Panel is activated when Windows starts.
- Restore default settings.
- Select the audio playback device
- Select the supported software languages available for your system.
- General information regarding your Sound Blaster Audigy Fx Control Panel software.




SBX Pro Studio Settings



1. **SBX Pro Studio enhancements**
Select to turn on or turn off each enhancement. You can hover your mouse cursor over each enhancement to display a brief explanation.
2. **Enhancement Level sliders**
Adjust the amount of enhancement to apply.
3. **Audio Test controls**
Play/Pause or Stop the demo video.

Enhancing Your Listening Experience

You can adjust the amount to apply for each enhancement by dragging its slider left to decrease or right to increase. To test the effects of the audio enhancements, click  and listen to the demo video.

- **SBX Pro Studio Surround** provides immersion control of sounds not just around you, but also above and below for a full 3D audio experience. Hear the natural sense of audio depth, spaciousness and stunning 3D surround effects from your audio content. Enjoy an unbelievably true-to-life audio experience, whether it's over stereo speakers or headphones. Alternatively, you can switch to the Stereo option which will provide a more basic surround experience, whereby the front L/R speaker channels' stereo audio content are duplicated to all the surround speakers. Note that the Stereo option is only available in 5.1 speaker configuration.
- **SBX Pro Studio Crystalizer** restores the dynamic range that is lost when iTunes and MP3 music gets compressed. This makes the music sound as good as the artist originally intended, and adds an enhanced level of realism for movies and games.
- **SBX Pro Studio Bass** fills in the low frequency tones and gives the extra impact for a better entertainment experience. It dramatically improves the sound experience without a subwoofer.
- **SBX Pro Studio Smart Volume** addresses the problem of abrupt volume level changes during playback and between songs by automatically and continuously measuring volume, and intelligently applying gain and attenuation to compensate for those changes.
- **SBX Pro Studio Dialog Plus** enhances the voices in movies for clearer dialog, allowing the listener to hear the dialog over the rest of the soundtrack and over ambient noise in the listening environment.

Speakers/Headphones Settings

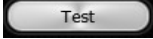


1. Speakers / Headphones Configuration
Select your current physical speaker or headphone configuration.

Note



At 5.1 speaker configuration, the maximum supported sampling rate is 96 kHz.

Testing Your Audio Playback

Select the appropriate configuration based on your setup, then click  to hear a sample audio clip being played back through your setup.

Mixer Settings



1. Volume sliders
Adjust the playback and recording volume for your various inputs and outputs.
2. Mixer Settings
Click the  icon to mute/unmute the input/output. You can click the  icon to adjust the settings for your input/output.

Note

The volume sliders will be displayed only if the respective input or output sockets are plugged in.


Equalizer Settings



1. EQ presets
Select an equalizer preset to apply to your audio.
2. EQ sliders
Adjust the equalizer settings.

Customizing Your EQ Settings

Select the EQ checkbox to enable this feature, then click the EQ drop-down arrow and select a preset from the list.

Selecting a preset will move the EQ sliders to the appropriate values. You can then adjust the equalizer setting by dragging the sliders up or down to the desired level. Click  to save the new configuration as a new preset.

Note

The list of default EQ presets cannot be deleted or overwritten.

Using Your Audio Device

Playing Games

Your audio device is equipped with cutting edge audio technologies and software to enhance the audio in your games. SBX Pro Studio will elevate your gaming experience to the next level, allowing you to hear sound details in games you have never heard before!

For details on the various SBX Pro Studio enhancements and its configuration, please refer to Using the Creative Software Suite.


Creative ALchemy

When configuring DirectSound®3D games on Windows Vista, Windows 7 and Windows 8, the game loses its immersiveness and environmental effects due to changes in audio architecture.


To restore these effects and experience the full audio immersion, follow the steps below:

Enable the Game in Creative ALchemy

For Windows Vista / Windows 7:

1. Click **Start > Programs or All Programs > Creative > ALchemy > Creative ALchemy**
2. The game should be detected automatically and appear in the left column.
3. Select the game and click  to move it to the right column.
4. Close the application.

For Windows 8:

1. At Windows Start screen, click **Creative ALchemy**
2. The game should be detected automatically and appear in the left column.
3. Select the game and click  to move it to the right column.
4. Close the application.

When you launch the game, you should hear the original effects.

Note

If the game is not detected, do the following:

1. *Navigate to the folder where you have installed the game.*
2. *Right-click on the game's launcher and select Run as administrator.*
3. *Exit the application and launch Creative ALchemy again. The game should now appear in the left column.*

Communicating with Voice over Internet Protocol (VoIP)

Use a headset with your audio device to enjoy outstanding acoustic performance in popular VoIP applications like Ventrilo® and TeamSpeak®. Hear and be heard clearly by teammates during multi-player games to get the tactical edge.

General Specifications

This section details the specifications of your Sound Blaster Audigy Fx audio card.

PCI Bus Mastering

- PCI Express Specification Version 1.1 compliant
- Bus mastering reduces latency and speeds up system performance

Audio Performance

- 16-bit to 24-bit recording sampling rates: 44.1, 48 and 96 kHz
- 16-bit to 24-bit playback sampling rates: 44.1, 48, 96 and 192 kHz

Note

At 5.1 speaker configuration, the maximum supported playback sampling rate is 96 kHz.

Flexible Mixer Control

- Independent input source from various audio sources for recording
- Adjustable master volume control
- Independent volume control

SBX Pro Studio Technology

- SBX Pro Studio Crystalizer
- SBX Pro Studio Surround
- SBX Pro Studio Bass
- SBX Pro Studio Dialog Plus
- SBX Pro Studio Smart Volume

Connectivity

This section details the connectivity of your Sound Blaster Audigy Fx audio card.

Rear Panel Connectivity

- Line-in : 1 x 1/8-inch mini jack
- Microphone-in : 1 x 1/8-inch mini jack
- Headphone / Front-out : 1 x 1/8-inch mini jack (4 pole jack)
- Rear-out : 1 x 1/8-inch mini jack
- Centre / Subwoofer : 1 x 1/8-inch mini jack

Speaker Support

- Stereo / 2.1 Speakers
- 5.1 Speakers

Headphones

- Stereo Headphones
- Compatible with Apple Earphones (4 pole jack)

Bus Connection

- PCI Express 1x , 4x , 8x , 16x

Audio Inputs

- One 3.5mm (1/8-inch) Line In jack for Analog Line In
- One 3.5mm (1/8-inch) Microphone In jack

Audio Outputs

- One 3.5mm (1/8-inch) Headphone jack, shared with Line Out (Front Left / Right) jack
- Three 3.5mm (1/8-inch) Line Out jacks for six channel analog audio output:
Front Left, Front Right, Front Center, Subwoofer, Rear Left and Rear Right channels

Interfaces

- One 2 x 5 pin Front Panel Header for connection with Intel HD Front Panel Audio standard header

Front Panel Header Audio Connector

Connection Compatibility

- Intel HD Front Panel Audio standard only.
Not compatible with AC97 or Intel-compatible HD Front Panel Audio

Pin Configuration

Pin	Signal Name	Description
1	PORT 1L	Analog Port 1 - left channel (Microphone)
2	GND	Ground
3	PORT 1R	Analog Port 1 - right channel (Microphone)
4	PRESENCE#	Active low signal that signals BIOS that an Intel HD Audio dongle is connected to the analog header. PRESENCE# = 0 when an Intel HD Audio dongle is connected.
5	PORT 2R	Analog Port 2 - right channel (Headphone)
6	SENSE1_RETURN	Jack detection return for Front panel (JACK1)
7	SENSE_SEND	Jack detection sense line from the Intel HD Audio CODEC jack detection resistor network
8	KEY	Connector Key
9	PORT 2L	Analog Port 2 - left channel (Headphone)
10	SENSE2_RETURN	Jack detection return for front panel (JACK2)

Troubleshooting

This section provides solutions to problems you may encounter during installation or normal use. This includes:

- Problems with Multiple Audio Devices
- Problems with Sound

If you have any other technical problems with this product, you can also consult our self-help tool "Knowledge Base" for online troubleshooting and solutions.

Problems with Multiple Audio Devices

If there are other audio cards on the system.

You may have an existing audio device installed in your computer. The audio device may be an audio card or an onboard audio chipset. Before you install your audio device, you are advised to disable or completely uninstall and remove your existing audio device. Operating multiple audio devices in your computer may introduce usability issues.

If the system has an onboard audio chipset.

Disable your computer's onboard audio chipset. Consult the documentation of your computer's motherboard for details.

Problems with Sound

No sound from the headphones.

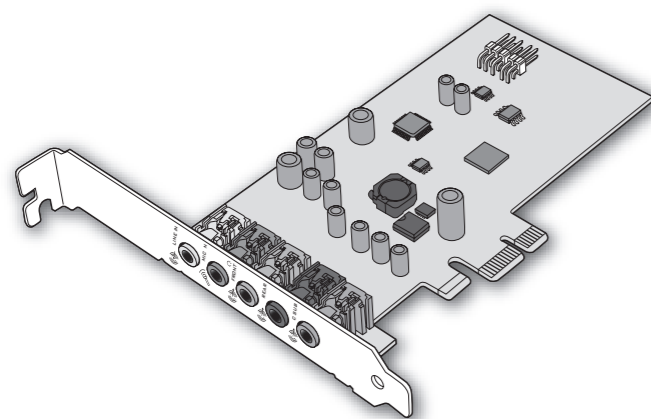
Check the following:

- The headphones are connected to the card's Headphone/Line Out 1 jack (Front L/R) or the front panel headphone.
- To use the rear headphone, please ensure that the front panel headphone is unplugged. This is because it will mute the rear headphone if the front panel headphone is plugged in.
- In the Speakers/Headphones tab of the Sound Blaster Audigy Fx Control Panel, the **Headphones** option is selected.

No audio output when playing digital files such as .WAV, MIDI files or AVI clips.

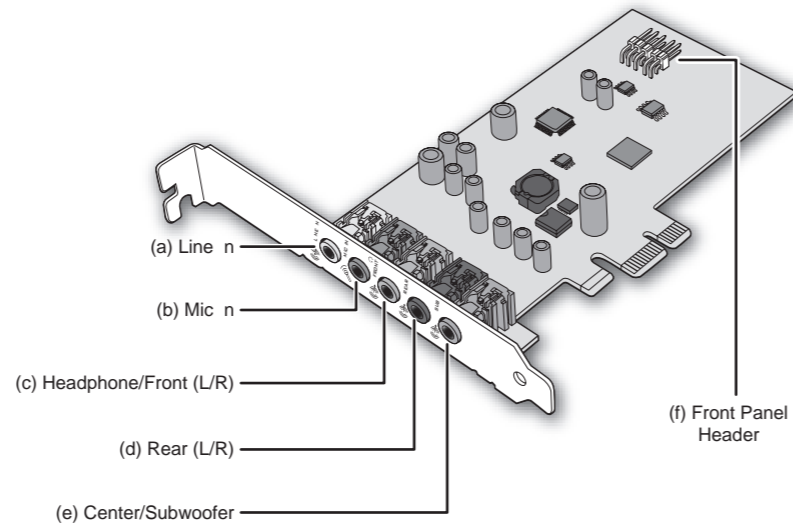
Check the following:

- The speakers' volume control knob, if any, is set at mid-range. Adjust the volume in Mixer Settings of the Sound Blaster Audigy Fx Control Panel, if necessary.
- The powered speakers or external amplifier are connected to the card's Line Out jacks.
- There is no hardware conflict between the card and a peripheral device. See Troubleshooting.
- The Speakers/Headphones Configuration settings in the Speakers/Headphones tab of the Sound Blaster Audigy Fx Control Panel corresponds to your actual speaker or headphone configuration.

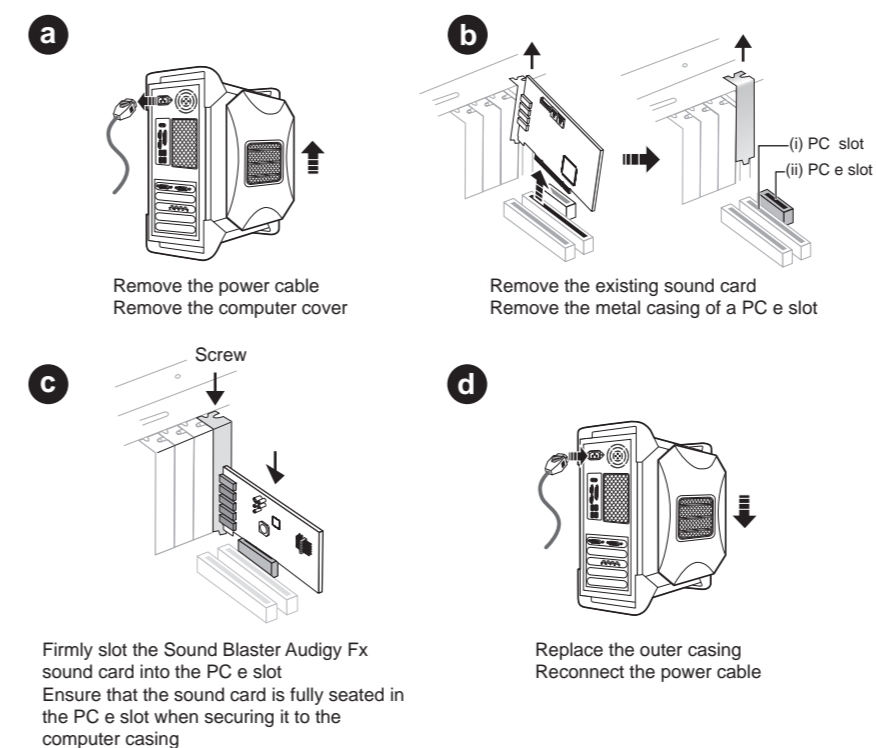


Jacks & Connectors

Thank you for choosing the Sound Blaster Audigy Fx audio card. Welcome to a world of sound never before experienced.



1 Installing Your Hardware



2 Installing Your Software

To take full advantage of your Sound Blaster Audigy Fx audio card, you need to install device drivers and applications.

For Windows Vista/Windows 7:

- 1 Insert the installation CD into your CD or DVD drive
Your CD should start automatically. If it does not, follow the steps below:
 - i Click **Start > Computer**.
 - ii Right click the CD or DVD drive icon and then click **Open AutoPlay**.
- 2 To complete the installation, follow the instructions on the screen.
- 3 When prompted, restart your computer.

For Windows 8:

- 1 Insert the installation CD into your CD or DVD drive
- 2 In a short while, a drive icon will be displayed. Click on the icon and then choose **Run setup.exe**.
If you do not see the drive icon, follow the steps below:
 - i Right click on the background of the Windows start screen and then click **All apps**.
 - ii Click **Computer**.
 - iii Right click the CD or DVD drive icon and then click **Open AutoPlay**.
- 3 To complete the installation, follow the instructions on the screen.
- 4 When prompted, restart your computer.

3 Using Your Sound Blaster Audigy Fx

Your Sound Blaster Audigy Fx works seamlessly with many external devices, delivering enhanced audio effects via the SBX Pro Studio engine to drastically improve your listening experience.

