

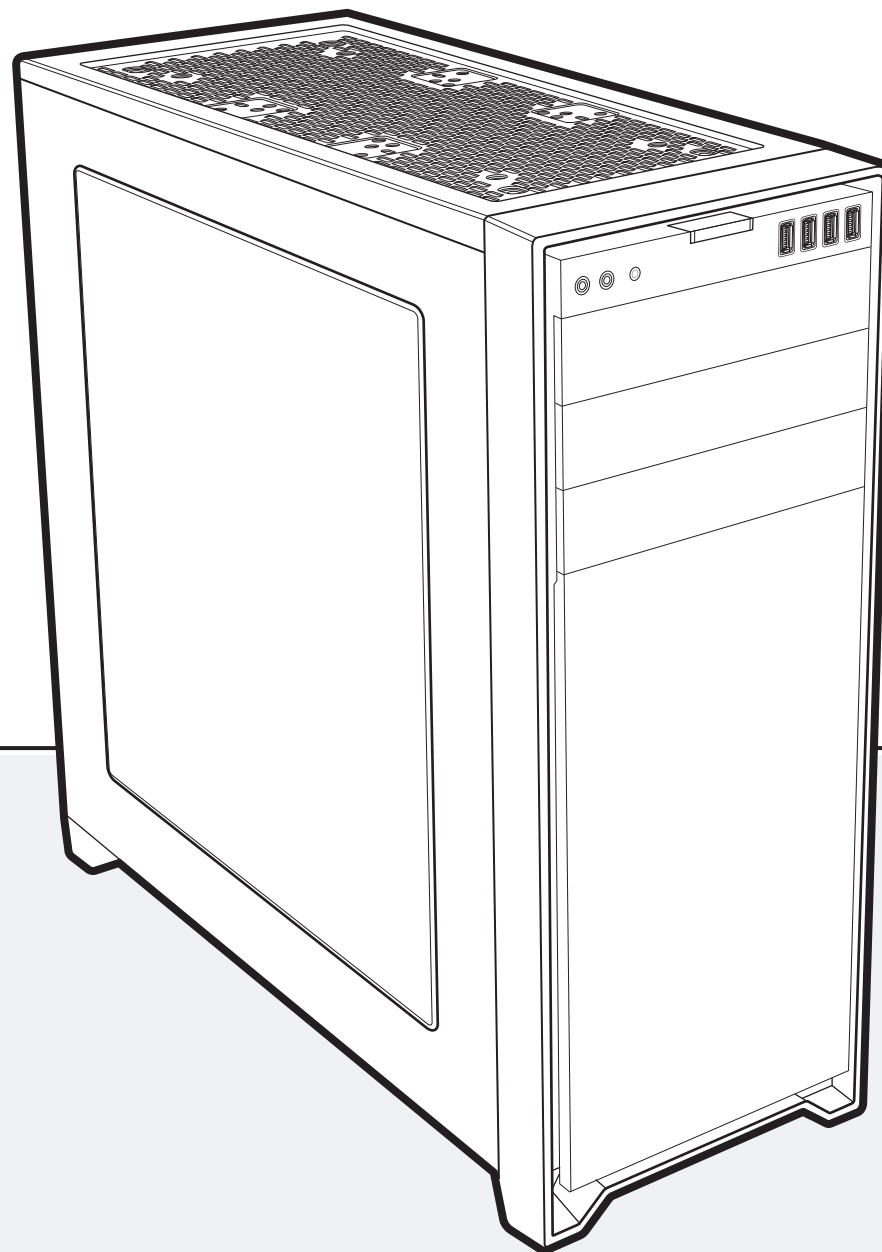
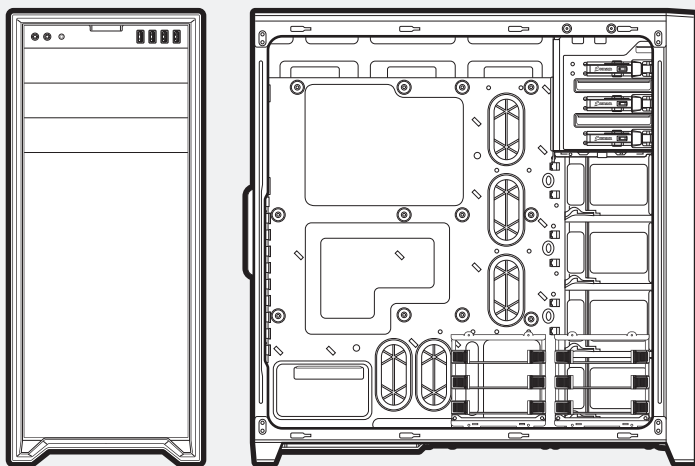


OBSIDIAN SERIES®

750D

Obsidian Series® 750D Full-Tower PC Case

INSTALLATION GUIDE





CONGRATULATIONS!

Thank you for purchasing an Obsidian Series® 750D Full-Tower PC case.

Obsidian Series® 750D Full-Tower PC Case with one AF140L rear exhaust fan and two AF140L front intake fans

Installation Guide

Accessory Kit

Maximum GPU length:	
Top slots:	460mm
Lower slots:	340mm
Maximum CPU cooler height:	
	180mm



CONTENTS



x10

MBD/HDD screws



x4

Long fan screws



x16

Short fan screws



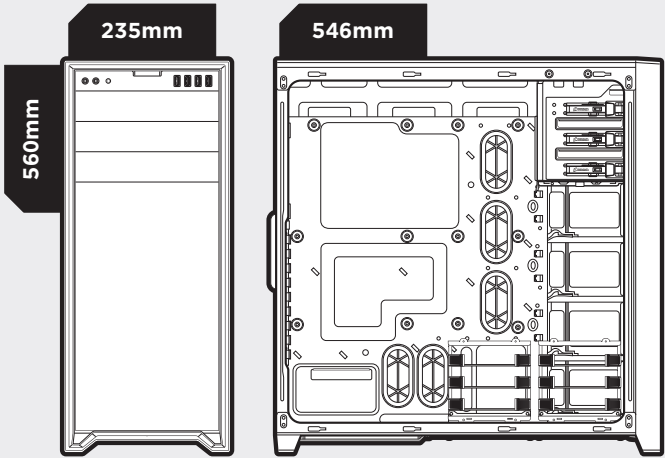
x28

SSD/ODD screws

The 750D has a clean, elegant exterior that dispenses with arbitrary plastic add-ons in exchange for the beauty of brushed aluminum and solid steel. This rigid, rugged exterior surrounds a frame that has ample room for high-performance components and the sophisticated cooling you'll need if you're going to push those components to their limits. And, it incorporates a host of clever builder-focused features, because we know that building a system should be straightforward, trouble-free and even fun.

OBSIDIAN SERIES®

750D



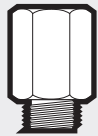
x4

SSD pan head screws



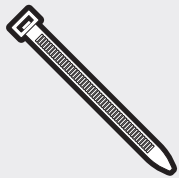
x6

HDD tray screws



x1

Motherboard standoffs



x4

Cable ties



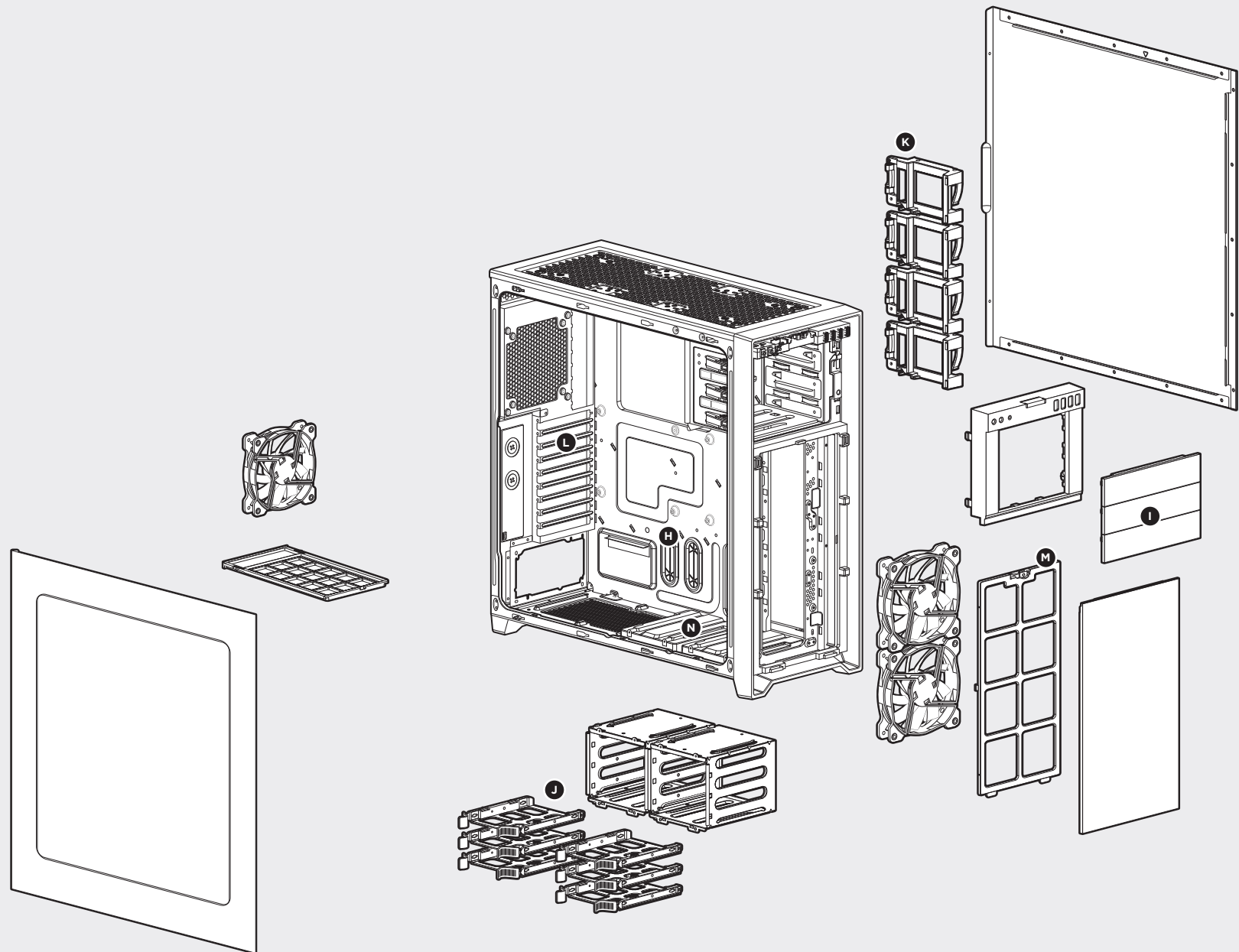
OBSIDIAN SERIES® 750D FULL-TOWER PC CASE

-
- An exploded view diagram of a server chassis. The central component is the main chassis frame, which has several internal compartments and mounting points. Various components are shown around it, each labeled with a letter in a circle:
- A: Two cooling fans, one positioned at the front left and another at the front right.
 - B: A top cover or dust filter panel.
 - C: A side panel or door.
 - D: A rear panel or door.
 - E: A front bezel or faceplate.
 - F: A large front door or access panel.
- Other unlabeled components include a small rectangular tray, a vertical rack-like structure, a horizontal panel, and several smaller modules or connectors. The diagram illustrates how these parts fit together to form the complete server unit.



OBSIDIAN SERIES® 750D FULL-TOWER PC CASE

- H** Built-in cable routing cutouts with grommets
- I** (x3) Tool-free removable optical drive bays
- J** Tool-free 3.5" hard drive cages with 2.5" compatibility
- K** (x4) Tool-free 2.5" SSD removable caddies
- L** (x9) Expansion slots for GPUs
- M** Removable front and bottom low restriction dust filters
- N** Bottom dual 120mm fan mounts compatible with 240mm radiators



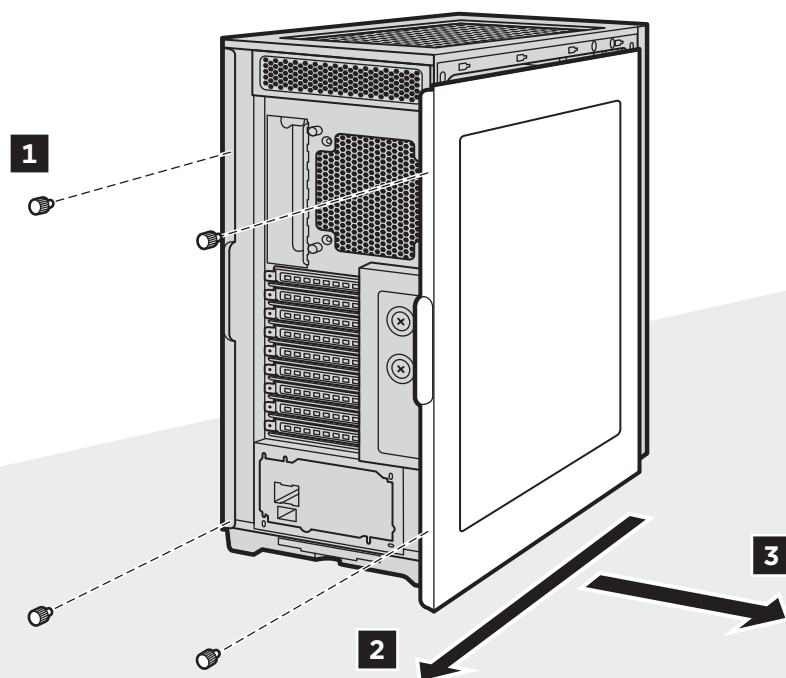
OBSIDIAN SERIES® 750D FULL-TOWER PC CASE

01

Removing the side panels

- > Remove the thumbscrews and slide the side panel back and out.

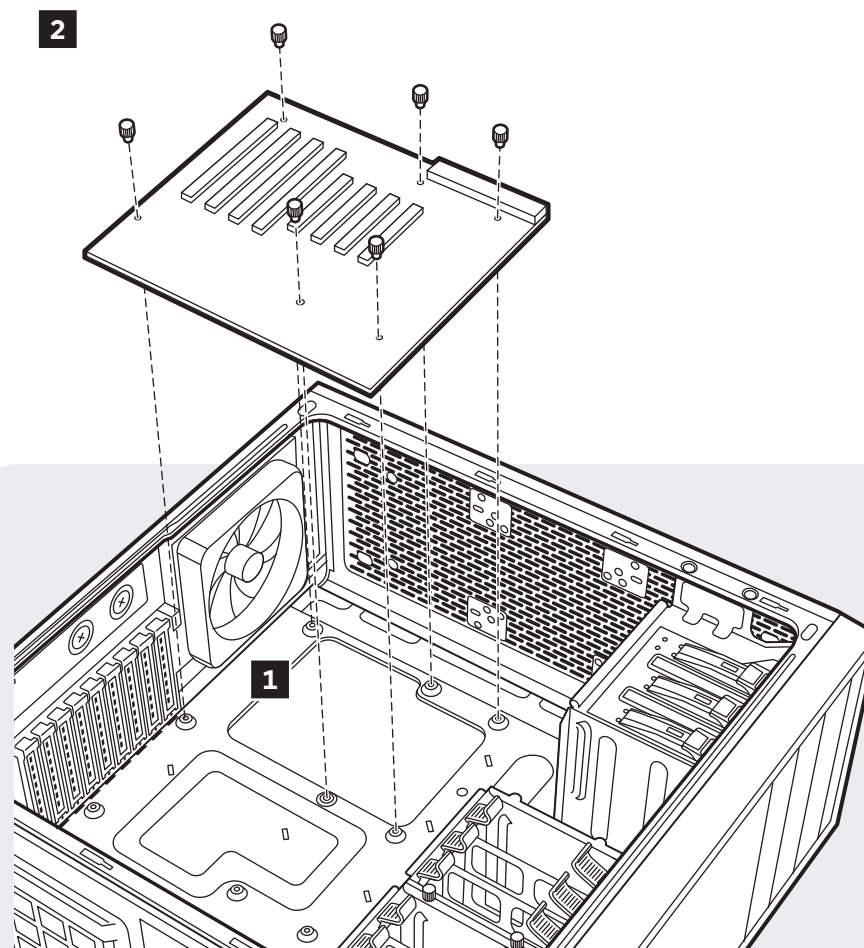
Note: Corsair recommends removing both side panels and setting them aside when building your system to avoid accidental damages.



02

Installing the motherboard

- > Install your motherboard's I/O shield (see your motherboard's manual for guidance).
- > Align the motherboard with the standoffs in the case.
- > Secure with the included screws (MBD/HDD screws).

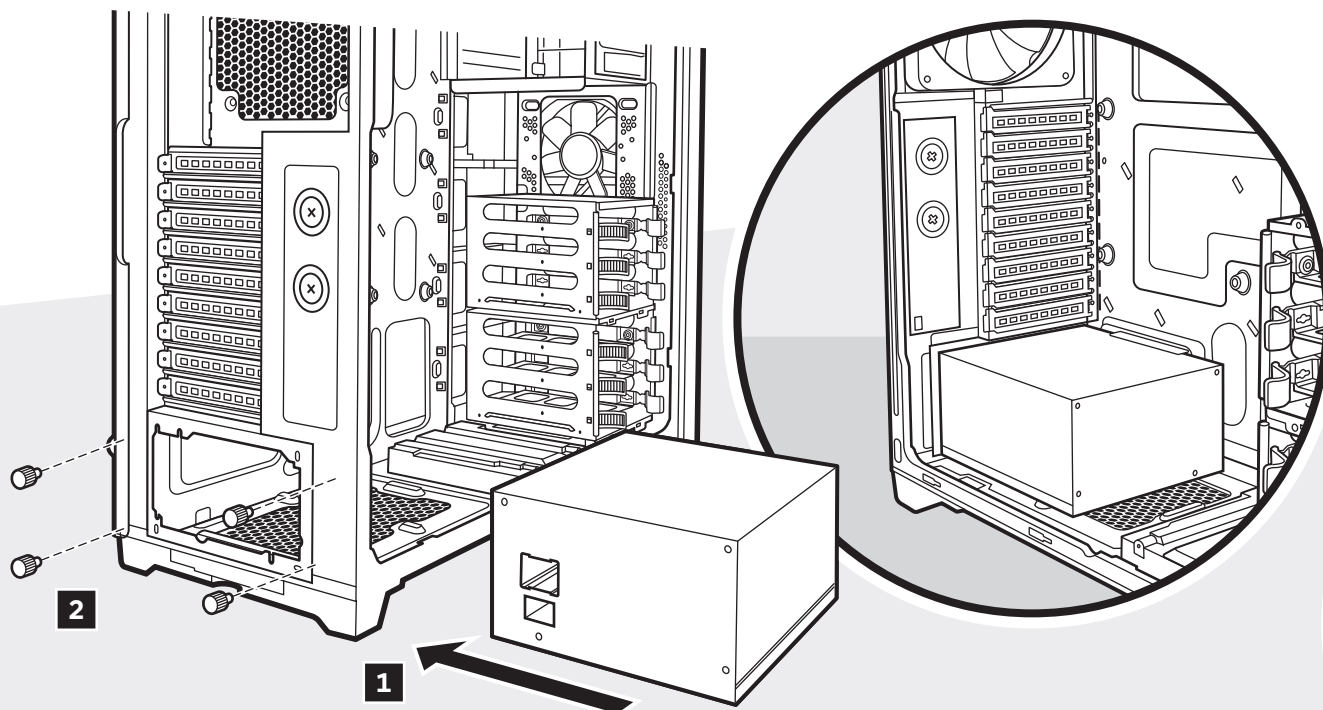


03

Installing the power supply (PSU)

- > Seat the PSU on the bottom of the case.
- > Align holes and secure the PSU with screws.

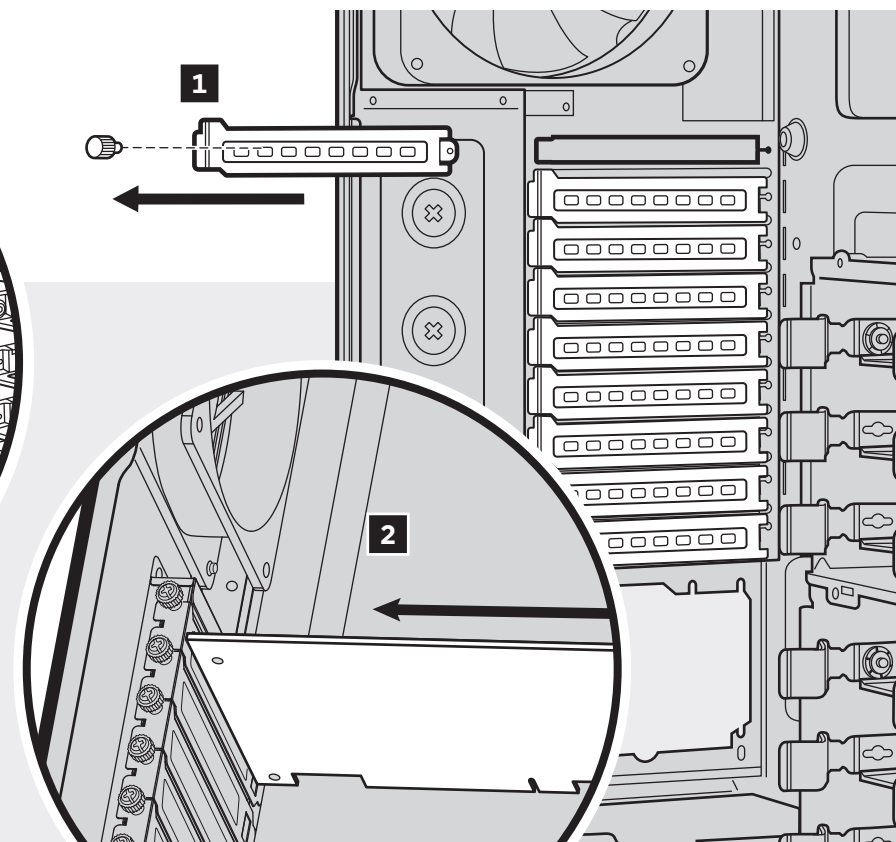
Note: PSU can be installed in either fan up or fan down orientations.



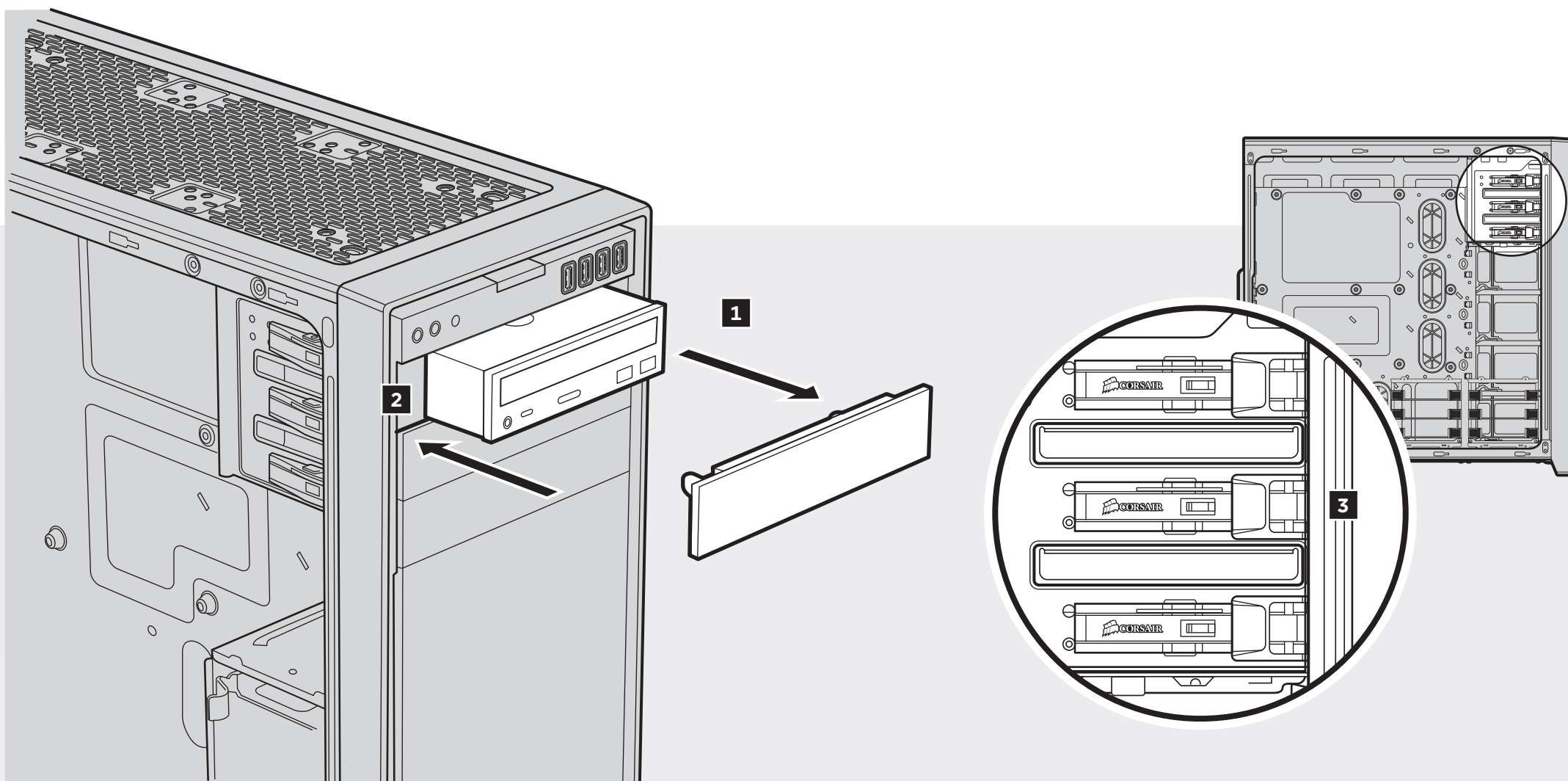
04

Installing the PCI-E/PCI cards

- > Remove thumbscrews and corresponding slot cover(s).
- > Install the add-on card and secure with thumbscrews.



- > Remove the front panel 5.25" drive bay cover.
- > Insert the ODD into the drive bay until the tool-free latch clicks, securing the drive.
- > To remove, push the tool-free tab to release the ODD drive and remove.



06

Installing a 3.5" HDD/ 2.5" SSD

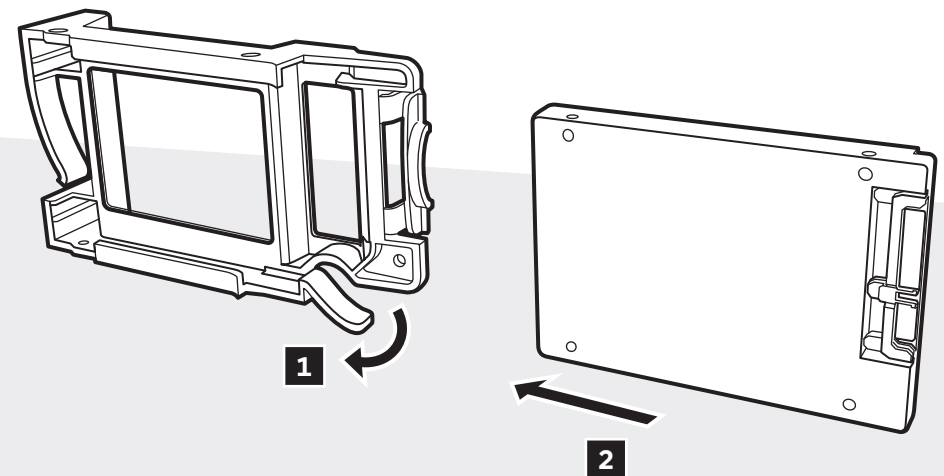
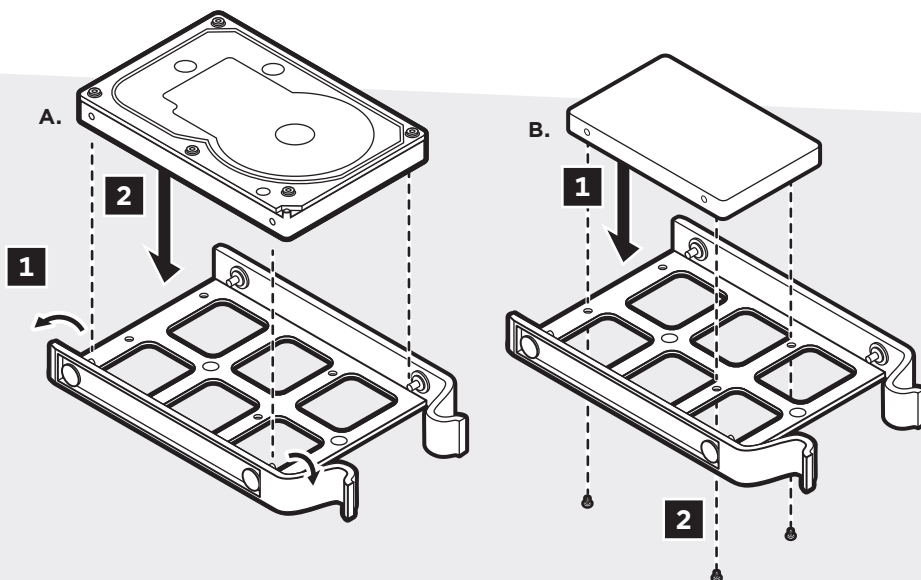
- > Remove the tool-free 3.5" HDD tray.
- > Insert the HDD into the HDD tray.
- > Align the HDD holes with the tray pins to secure.

Note: To mount a 2.5" drive in this tray, it is necessary to remove one of the side pins and secure the drive from underneath with screws.

07

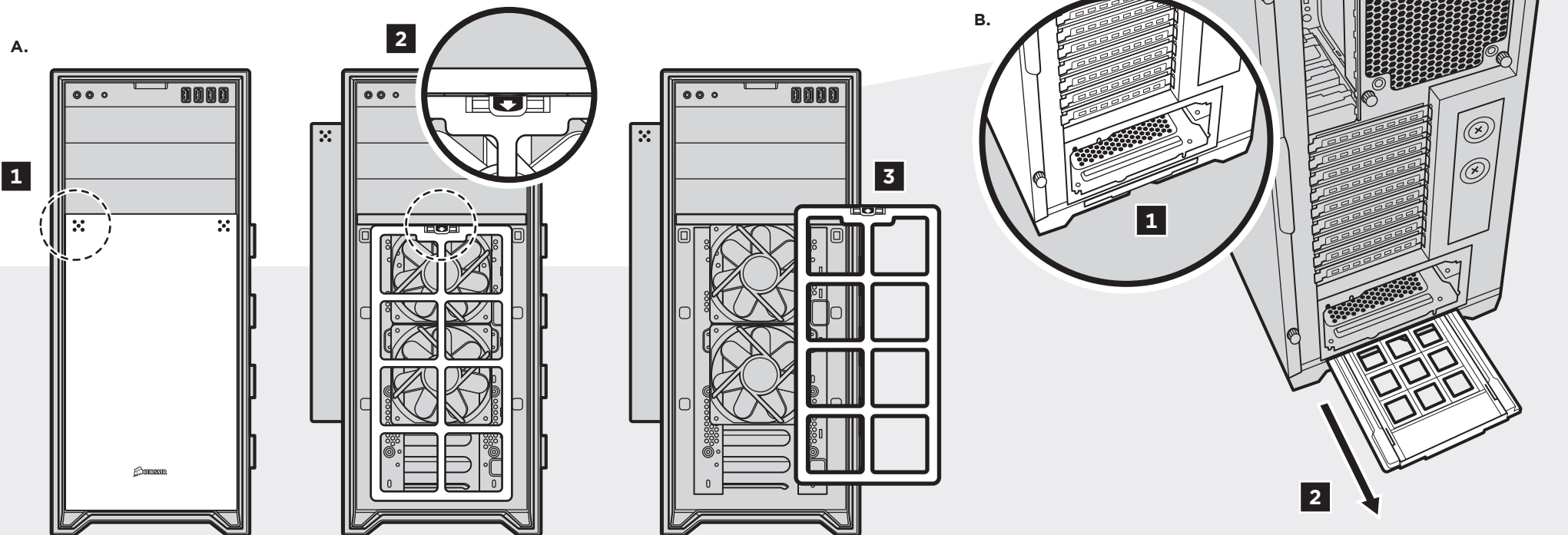
Installing a 2.5" SSD into tool-free expandable SSD cage

- > Pull down the tab and place the SSD into the tool-free cage until you feel it secure.
- > To remove the SSD, pull the tab down to release.

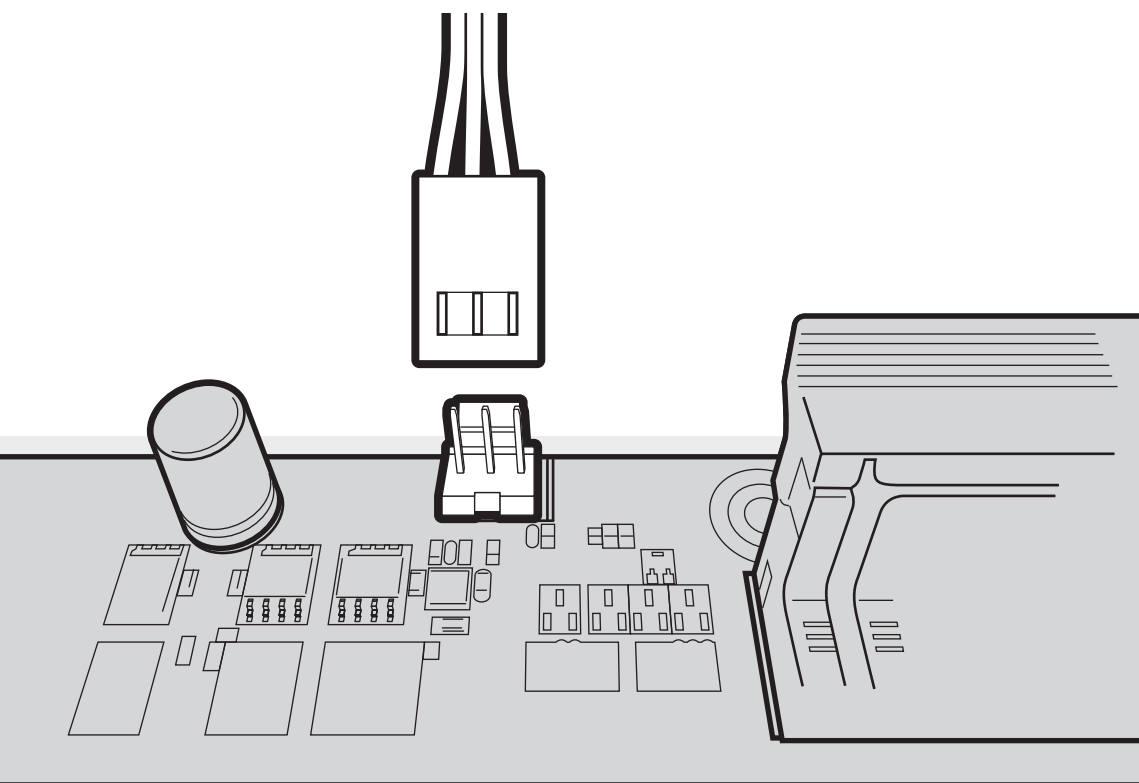


Removing the front and bottom dust filters

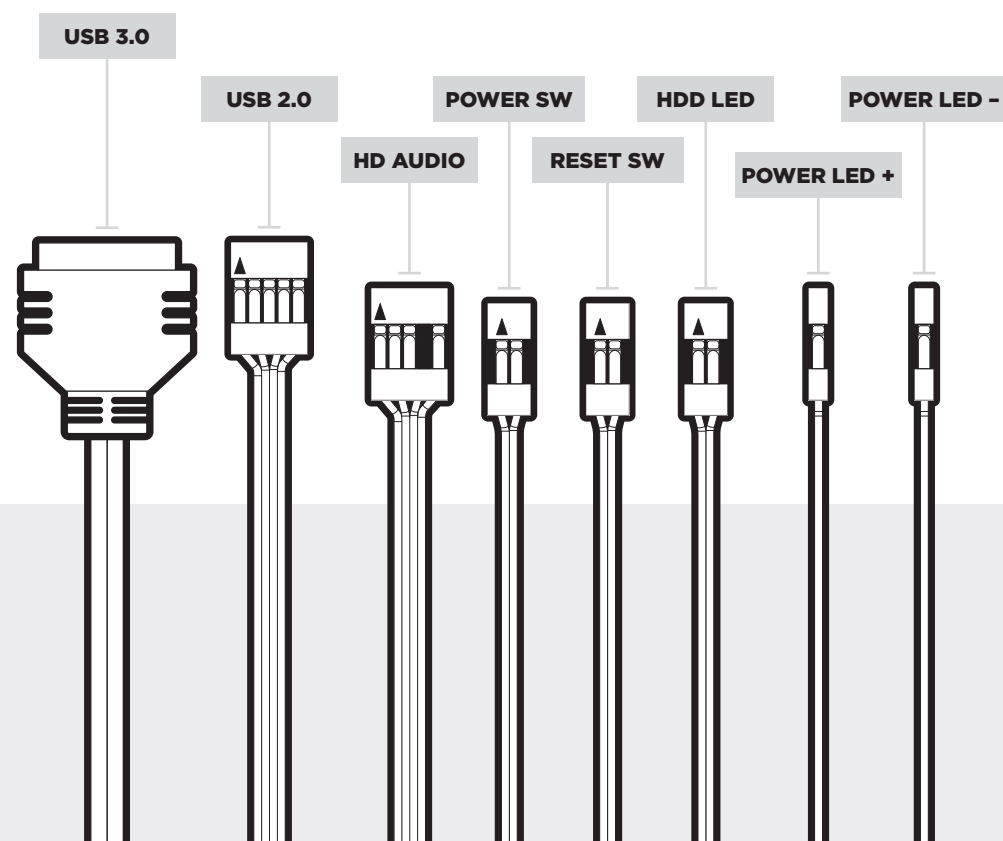
- > To remove the front panel dust filter, first remove the solid front panel by pushing the top corners of the aluminum cover.
- > The front solid panel will pop out for access to the front dust filter.
- > Remove the front dust filter by pressing the arrowed tab located on the top center.
- > To remove the bottom dust filter, first locate the pull out tab underneath the PSU, then pull the bottom dust filter out.



> See your motherboard's manual for fan header locations.



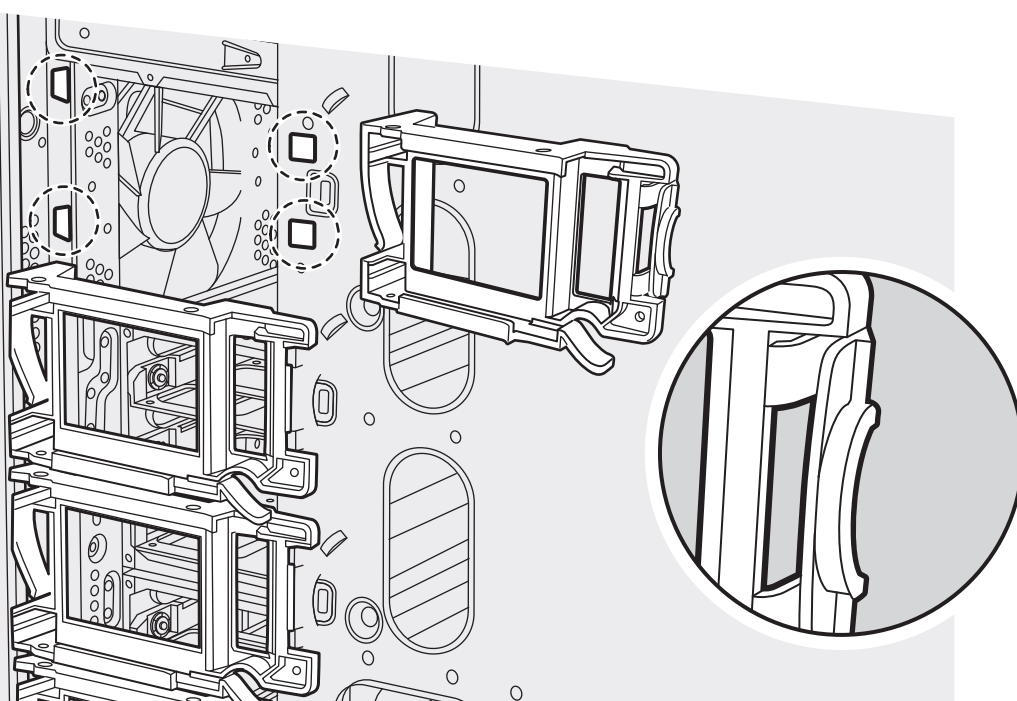
> See your motherboard's manual for front panel header locations and pin-outs.



11

How to remove the SSD caddy

- > To remove the SSD caddy, locate the center tab to the right of the caddy and then pull the tab in and lift to release the caddy.
- > To install the SSD caddy, align the SSD caddy with the holes from left to right and secure into place.



12

How to remove the HDD cage

- > Locate and remove the two screws securing the cage to the base on the bottom of the case.
- > Pull the HDD cage out.
- > HDD cages are stackable and can be installed on top of each other or completely removed for improved cooling.

Note: The HDD cage can also be removed by removing the four screws located directly under the base on the bottom of the case.

