

APP "FINAL CAM" DOWNLOAD

Please scan the QR code as shown below :



For Android



For IOS

PiCTEK

Sport Camera USER MANUAL

▶ ENGLISH

ACCESSORIES



x1

Waterproof Case



x1

Fixed Base



x1

Protective Door
(Not Waterproof)



x1

Switch Support 1



x1

Switch Support 2



x1

Switch Support 3



x1

Fixed Base



x1

Back Clamp



x1

Back Clamp



x1

Adhesive Mounts



x2

3M Adhesive
Tapes



x2

Bandages



x2

Batteries



x1

Wire Rope



x1

Bicycle Stand



x1

Base



x1

Adapter



x4

Ribbons



x1

Data Line



x1

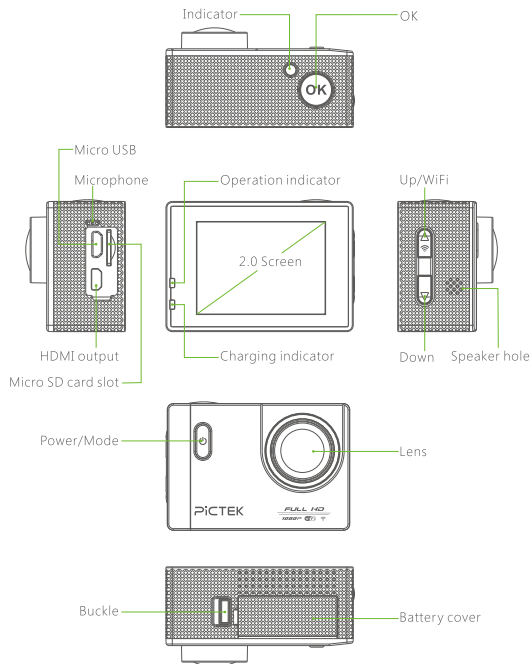
Cleaning cloth



x1

User Manual

PRODUCT STRUCTURE DIAGRAM



SPECIFICATION

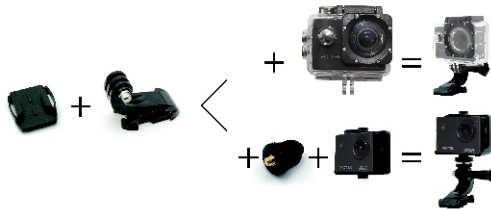
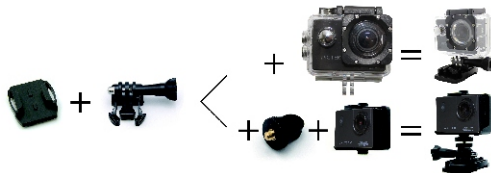
LCD Display	2.0LTPS
Lens	170° wide angle filed of view
Language	English/Deutsch/ Français/ Español/ Italiano/ Português/ 繁體中文/ 简体中文/ 日本語/ Русский
Video Resolution	1080FHD(1920×1080) 720p(1280×720)@30fps 720p(1280×720)@60fps WVGA 848x480 VGA 640x480
Video Format	MOV
Video Compression	H.264
Encoding	12M(4032x3024) 10M(3648x2736) 8M(3264x2448) 5M(2592X1944) 3M(2048x1536) 2MHD(1920X1080) 1.3M(1280x960) VGA(640x480)
Image Resolution	Micro SDHC, class6 or above. Support storage 8G to 32G. (Micro SD card is not included)
Storage	Single/2s Timer/5s Timer /10s Timer
Capture Modes	Time-lapse Off/ 1 seconds/ 2 seconds/ 5 seconds.
Frequency	50Hz/60Hz
USB	Micro USB2.0
Power Source	5V/1A

Battery Capacity	1050mAh
Power Consumption	400mA@4V
Battery Working Life	1080p/90min
Charging Time	About 4 hours
Support OS	Windows XP/7/8 SP3/ Vista and Mac 10.5 or above
Dimension	59.27×41.13×29.88mm

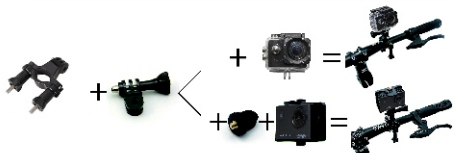
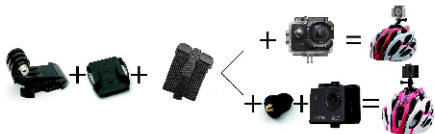
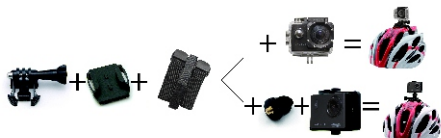
PRODUCT FEATURES

- For extreme sports enthusiasts.
- Waterproof, it can works 30m underwater.
- WiFi Function: Download the free App (Final Cam) , user can control the camera or preview images and videos on your smart phone or tablet via WiFi connectivity.
- 2.0" TFT display.
- Detachable battery, easy to replace battery, prolong camera's life
- It can record video during charging.
- 170° wide angle lens.
- Support HDMI output.
- Can be used as a web camera.
- Support max 32G Micro SD card.
- 1080p(30fps)/ 720p(30fs)/ 720p(60fps).
- H.264 Video format.

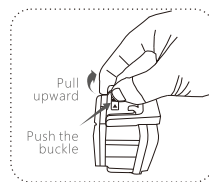
ASSEMBLY GUIDE



ASSEMBLY GUIDE

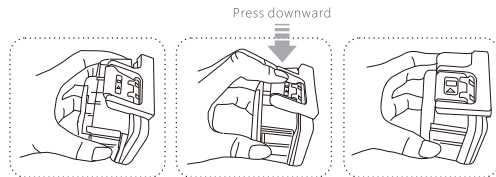


THE CORRECT WAY TO OPEN THE WATERPROOF CASE



Push the buckle on the top of the waterproof case and pull the hinge upward. If you only push the buckle without the action of pulling upward, you won't be able to open the case. The two actions must be performed simultaneously.

THE CORRECT WAY TO CLOSE THE WATERPROOF CASE



CAMERA HOUSING PROTECTIVE DOORS

This camera housing comes with two protective doors, one is waterproof, the other is not waterproof.

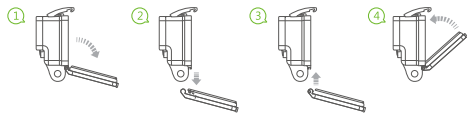
Use this protective door when you need to protect the camera from water, dirt, sand and other environmental hazards.



This protective door provides better sound quality by allowing much sound reach the camera's microphone. It also can reduce wind noise when mounted on helmet, bike, and other fast-moving vehicles.

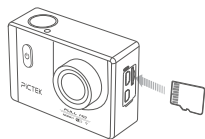


HOW TO CHANGE PROTECTIVE BACKDOOR



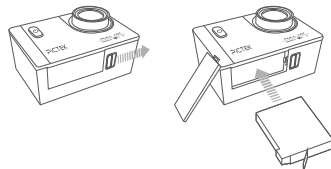
1. Open the the backdoor of the housing so that it hangs downwards.
2. Firmly pull the backdoor downwards until it snaps free from the main housing.
3. Line up the the replacement backdoor into the hinge.
4. Push upwards on the backdoor until it clicks into the hinge.

OPERATION GUIDE



1. Insert Micro SD card

This camera itself has no memory, you need to buy a Micro SD card(This camera support card storage 8G to 32G.) . To quest for better experience, please choose branded Micro SD card, and use class 6 or above card. Please format your card in a computer before inserting it into micro card slot.

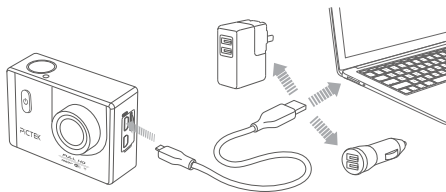


2. Install Battery

Push and slide the buckle beside the battery cover.

Insert the battery into the battery slot according to the polarity on the battery.

Battery status display: please refer to the battery icon on the screen.



3. Charging

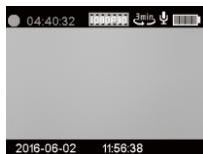
Connect the camera to PC or adapter, car charger. The red charging indicator light will light up during charging, and it takes approx 4 hours to fully charge it.

4. Power on/off


Short press the power button [] to turn on the camera.
Long press the power button [] for 3 seconds to turn off the camera.

5. Modes Switch

After power on the camera, short press the button [] to switch modes among video, photo, playback, and setting.



Video mode

After you turn on the camera, the default mode is video mode, press [] button to start to record video, press the button again to stop recording video.

Long press up/ down side buttons to enlarge or reduce image, the maximum can reach 5 times.

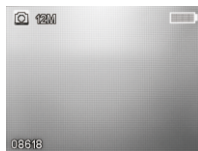

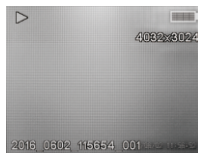



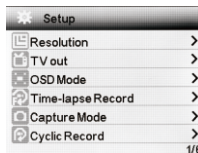
Photo mode

Switch to photo mode, press [] button to take a picture.
Long press up/ down side buttons to enlarge or reduce image, the maximum can reach 5 times.




Playback mode

Switch to playback mode, you can preview images and replay videos on the screen of the camera. Press up/down buttons to choose terms. When you replay video, please press the [] button to replay it.



Setting mode: switch to setting mode

Press up/down side buttons to choose terms.
Press the [] button to open the sub-menu or confirm.

ABOUT SETTINGS

Items	Description
Resolution	You can choose from 1080FHD 1920x1080, 720P 1280x720 60fps, 720P 1280x720 30fps, WVGA 848x480, VGA 640x480.
TV Out	Turn on this setting, you can connect the camera to TV via Micro HDMI cable(not included), the camera screen's interface can be mirrored to TV.
OSD Mode	An on-screen display(abbreviated OSD) is an image superimposed on a screen picture, used to display information such as battery status, time, resolution, etc.
Time-lapse Record	You can choose items among off/ 1 seconds/ 2 seconds/ 5 seconds. For example, if you choose 2 seconds, it will shoot a picture every 2 seconds under video mode. Some classic subjects of time lapse record: clouds cape and celestial motion, plants growing and flower opening, fruit rotting and expiring, evolution of a construction project.
Capture Mode	You can choose items among Single / 2s Timer/ 5s Timer/ 10s Timer. This setting allow you to delay taking pictures. For example, if you choose 5s Timer, under photo mode, press the shutter button, 5 seconds later, it will take a picture.

Loop recording	You can choose this setting to adjust the video file size. If you select "Off", it will not stop recording video until power being used up, the recorded video is continuous; if you select " 3 minutes", the video will be segmented into many sections, each video file is 3 minutes.
Language	Ten languages available: English/ French/ Spanish/ Portuguese/ Germany/ Italian/ Simplified Chinese/ Traditional Chinese/ Russian/ Japanese.
HDR	High-Dynamic Range (Abbreviated HDR). Compared to normal image, this setting can provide much dynamic range and more image details, improving the image quality.
Motion Detection	Turn on this setting, under video mode, if some action is detected within 1.5 meters, it will automatically record a video, the video file size is 10 seconds. If no action is detected within 10 seconds, it will automatically stop recording video.
Record Audio	You can select selections between "Off" or "On". If you switch to "Off", the video will have no sound.
Date Stamp	If you switch to "On", date stamp will appear at the bottom of photos or videos when you are taking pictures or recording videos.

Image Size	You can choose the image sizes among 12M 4032x3024, 10M 3648x2736, 8M 3264x2448, 5M 2592x1944, 3M 2048x1536, 2MHD 1920x1080, VGA 640x480, and 1.3M 1280x960.
Quality	You can choose image quality levels among Fine/ Normal/ Economy.
Sharpness	You can adjust the image sharpness, three selections: Strong/ Normal/ Soft.
White Balance	You can choose selections among Auto/ Daylight/ Cloudy/ Tungsten/ Fluorescent.
Color	You can choose selections among Color/ Black & White/ Sepia.
ISO	You can choose selections among Auto/ 100/ 200/ 400.
Exposure	You can choose selections among +2, +5/3, +4/3, +1.0, +2/3, +1/3, +0.0, -1/3, -2/3, -1.0, -4/3, -5/3, -2.0.
Anti-shaking	Switch to "On", it will detect shaking and provide a more stable and clear image.
Date / Time	Press up/down side buttons to roll numbers; Press OK to confirm and switch selections among Year(YY)/ Month(MM)/ Date(DD)/ Hour/ Minute/ Second. You can also set the date formats: YY/MM/DD, DD/MM/YY, MM/DD/YY. Press power/mode button to exit.

Auto Power Off	You can choose Off/ 3 Minutes/ 5 Minutes/ 10 minutes. For example, if you select 5 Minutes, the product will power off automatically if there is no operation within 5 minutes.
Beep Sound	On or Off
TV Mode	NTSC: National Television Systems Committee; PAL: Phase-Alternative Line. When you connect the camera to TV via Micro HDMI cable, you need to select relevant TV mode. Different countries adopt different TV modes. For America/ Canada/ Japan, select NTSC; For Chinese/ Germany/ the UK / Spanish/ Italian/ Australia, select PAL. For more countries, please consult the local authorities.
Screen savers	Off/ 30 Seconds/ 1 Minute/ 3 Minutes/ 5 Minutes. This setting aims to save power. For example, if you select 30 seconds, the screen light will go out after 30 seconds, press any button activate it. If you select Off, the screen light will not go out.
Frequency	50Hz and 60Hz.
Image Rotation	Off/ On. If you select On, the screen image will be rotated 180 degrees.



Car Mode	Off/ On. If you select On, this product can be used as a dash cam(dashboard camera) to record traffic incidents, when it is connected to USB charging cable, it will automatically record video; If you select Off, when it is connected to USB charging cable, it will not automatically record video.
WIFISSID	You can set the camera's WiFi name.
WIFI Password	You can set the camera's WiFi password.
License No set	You can stamp your license plate number or other information on video. You can choose letters and numbers.
Delete	You can delete files(photos or videos).
Format	Format the Micro SD card, all data in the card will be deleted.
Default Setting	Reset to factory settings.
Version	The version information of the product.

6. Replay

Display on PC

Connect the camera to PC.
Download files to PC.
Replay images and videos on PC.

Replay on Camera

Press power button [], Switch to playback mode, you can preview images and replay videos on the screen of the camera. Press up/down side buttons to choose terms. When you replay video, please press the [] button to replay it.

7. WiFi Connection

Please download and install the "Final Cam" App to your smart phone or tablet before using this function.

For Android users: download the App from Google Play or scan the QR code at the back of the user manual.

For IOS users: download the App from Apple Store or scan the QR code at the back of the user manual.

Switch to video mode, short press the [] button, "PICTEK " will display on the screen.

Open WiFi function on your smart phone, and find "PICTEK" and connect it by entering the original password: 12345678.

Now, you can open the pre-installed App "Final Cam" to control your camera or preview images on your smart phone, you can also download files from camera to your smart phone.

Note: When the camera is connected to phone, your phone's internet connection is unavailable. If you choose to use phone to control the camera, you can not use camera buttons to control the camera.)




Disconnect WiFi

Short press the [] button again to disconnect WiFi.

Set WiFi Password

You can reset the WiFi password in the setting mode.

Switch to setting mode

Find out "WiFi Password" and press [], press mode button [] to switch between "Return", "OK", "A", "a", "0", "Del", password can be set in three form among capital letter, lowercase and number. Switch to "Del" to delete the original password. Switch to "A" or "a" or "0", press up/down side button to choose terms and press [] button to confirm.

CAUTIONS & WARNINGS

1. When this camera is stuck for wrong operation, please remove battery and insert the battery again to restart it.
2. Please do not drop down or crash this product.
3. Please keep this product away from magnet, fire and other heat sources.
4. Please use branded Micro SD card, class 6 or above, at least 8G storage.
5. Do not use this product in extreme temperature.
6. Please unplug the cable if found smoking, wired smells, etc during charging.
7. When charging, please put it on the place out of the reach of children.
8. Please store this product in a dry and cool environment when not use.

CORRECT DISPOSAL OF THIS PRODUCT



(Waste Electrical & Electronic Equipment)

This marking shown on the product or its literature, indicates that it should not be disposed with other household wastes at the end of its working life.

To prevent possible harm to the environment or human health from uncontrolled waste disposal, please separate this from other types of wastes and recycle it responsibly to promote the sustainable reuse of material resources.

Household user should contact either the retailer where they purchased this product, or their local government office, for details of where and how they can take this item for environmentally safe recycling.

Business users should contact their supplier and check the terms and conditions of the purchase contract. This product should not be mixed with other commercial wastes for disposal.