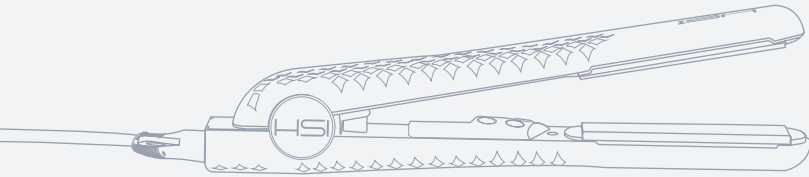




## IMPORTANT SAFETY INSTRUCTIONS



# *Glider Plus*

1" CERAMIC FLAT IRON

*with Digital LCD*



**Any questions? Email us:**

[service@hsiprofessional.com](mailto:service@hsiprofessional.com)

**Reflexive  
Floating Plates**

Allows the plates to turn slightly to their sides for added styling flexibility and to get better heat coverage

**Ionic Ceramic  
Tourmaline-Infused  
Plates**

Ions eliminate frizz and the ceramic plates are built to last.

**Digital Temp.  
Control 170-450° F**

Set the right temperature for your hair with the bright LCD display.

**360° Swivel Cord**

Keeps you detangled while styling.

**HeatBalance®  
Technology**

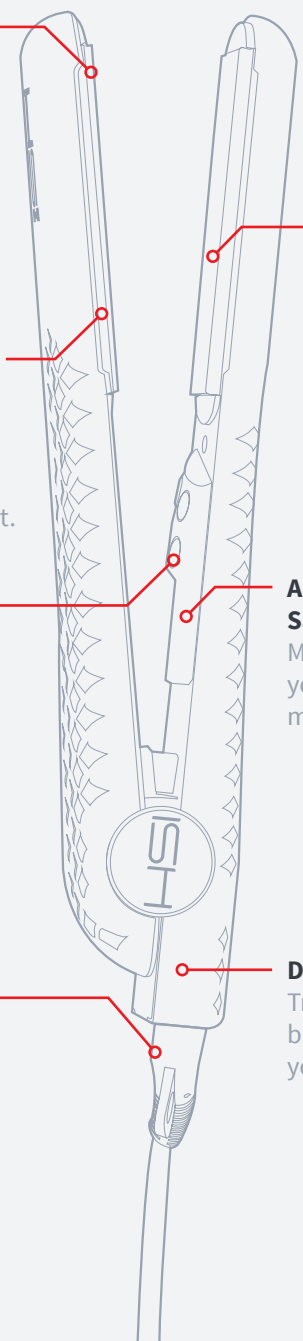
Evenly distributes infrared heat across the plates to avoid damaging hair with excess heat.

**Auto-Shutoff/  
Safety Sleep Mode**

Manual settings allow you to set the sleep mode in 10 min.

**Dual-voltage 110/220v**

Travel the world and bring your Glider+ with you.



## IMPORTANT SAFETY INSTRUCTIONS

Read all instructions before using



Keep away from  
children



Keep away from  
water

**WARNING:** Plates can become very hot and there is a serious risk of burns, electrocution, fire or injury. When using electrical appliances, especially when children are present, basic safety precautions should always be followed, including the following:

**DANGER:** Any flat iron is electrically live even when the switch is off. To reduce the risk of death or injury by electric shock:

1. Always unplug appliance immediately after using.
2. Do not use while bathing or in the shower.
3. Do not place or store appliance where it can fall or be pulled into a tub or sink.
4. Do not place in, or drop into water or other liquid.
5. If an appliance falls into water, unplug it immediately. Do not reach into the water.

**WARNING:** To reduce the risk of burns, electrocution, fire, or injury to persons:

1. This appliance should never be left unattended when plugged in.
2. This appliance should not be used by, on, or near children or by individuals with certain disabilities.
3. Use this appliance only for its intended use as described in this manual. Do not use attachments not recommended by the manufacturer.
4. Never operate this appliance if it has a damaged cord or plug, it is not working properly, if it has been dropped, damaged, or dropped in water. Return the appliance to HSI service center for examination and repair.
5. Keep the cord away from heated surfaces. Do not pull, twist, or wrap line cord around flat iron, even during storage.
6. Never block the air openings of the appliance or place it on a soft surface such as a bed or couch, where the air openings may be blocked. Make sure the air openings are free of lint, hair, and the like.
7. Never use while sleeping.
8. Never drop or insert any object into any opening.
9. Do not use outdoors or operate where aerosol (spray) products are being used or where oxygen is being administered.
10. Do not use an extension cord to operate flat iron.
11. This appliance is hot when in use. Do not let your eyes and/or bare skin or heat sensitive areas touch any hot parts or surfaces.
12. Allow flat iron to cool before storing.
13. Do not place appliance on any surface while it is operating. Use the HSI flat iron counter stand (sold separately).
14. Do not use with voltage converter.

## OPERATING INSTRUCTIONS

Use on Alternating Current (60/50 hertz) only. Standard flat irons are designed to operate at 110-220v 60/50Hz. This appliance has a polarized plug (one blade is wider than the other). As a safety feature, this plug will fit in a polarized outlet only one way. If the plug does not fit fully in the outlet, reverse the plug. If it still does not fit, contact a qualified electrician. Do not attempt to defeat this safety feature. Use of this flat iron on the same circuit or fuse with other electrical products or appliances may trip a 15 amp circuit breaker or blow a 15 amp fuse. NEVER replace the fuse with one rated higher than the capacity of the circuit. Doing so could result in an electrical fire.

### Important Information

This model may come with a fused plug with a reset button. If for some reason the iron does not turn on, please press hard on the reset button.

### Adjustable Temperature

HSI ceramic iron has an adjustable thermostat. To prevent hair damage, make sure to use the proper temperature for your hair type. Keep the iron moving along the strand of hair being straightened to avoid damage from excess heat.

Take extra care when using a professional styler.

### Changing The Temperature

To set the temperature

1. Press on power button turn on or off.
2. After turning the iron on, use the (+) and (-) buttons to select your desired temperature.
3. The digital screen will appear blue while the product is heating and turn green when it is ready for use.

### Temperature Display

To Change Temperature Display From Fahrenheit to Celsius press and hold the (+) button until the temperature display changes.

### Sleep Mode

To activate sleep mode, press and hold the (-) button. The LCD screen will turn red and display 00. Press the (+) button to choose how long the product should wait before entering sleep mode with 10 minute increments.

To turn sleep mode off, simply press and hold the (-) button until 00 is displayed on the LCD screen.

### Worldwide Edition Information

Please note when using this product abroad, the voltage switches automatically. An adapter for the plug (not a transformer) will still be required for it to fit in the local power outlet. This iron works with 110-220v.

### Cleaning

It is important to keep the plates clean.

1. Be sure appliance is turned off, unplugged, and cooled off.
2. Flat iron must be cleaned only when cold to the touch.
3. Use a clean, soft, slightly damp cloth to wipe the plates and the outside of the power handle. Do not use any object that can scratch the barrel.
4. Do not use water, chemicals, or liquids to clean the appliance, and do not allow any water or liquids to go into the handle of the flat iron. Do not use thinners, gasoline, alcohols, etc.

### Storage

1. Be sure appliance is turned off, unplugged, and cooled off.
2. Do not wrap the cord around the flat iron. Never allow the power cord to be pulled severely, bent, wrapped, or twisted around the appliance as damage may occur.
3. Do not put any stress on the cord where it enters the handle, as it could cause the cord to fray and possibly break.
4. Do not hang flat iron up by the cord.
5. Store in the original packaging or in a clean, dry place.

---

### Heat Temperature by Hair Type

LOW HEAT	170 - 275° F	Use with very fine, fragile, or damaged hair.
MEDIUM HEAT	275 - 350° F	Use with normal hair
HIGH HEAT	350 - 400° F	Use with curly, wavy or thick hair
VERY HIGH HEAT	400 - 450° F	Use with course hair that is difficult to straighten

**NOTE:** If you are unsure of your type of hair, begin with a lower temperature

## HOW-TO STRAIGHTEN YOUR HAIR

Some experience is necessary when learning to use this straightening iron. After using the iron several times, you will learn the ideal way to straighten and style your hair.



- 1** Hair should be dry and free of tangles. Spray HSI thermal protector (sold separately) onto your hair and spread evenly with fingers.



- 2** Press power button to turn on flat iron and adjust the temperature according to your hair type using the (+) and (-) buttons.



- 3** Divide the hair into manageable sections and clip the upper layers on top of your head and out of the way.



- 4** Start by taking a 2" section from the side or back of your head.



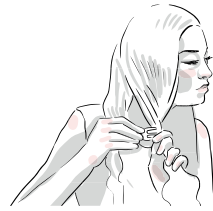
- 5** Starting at the roots, firmly clamp hair between the two plates and glide down the hair section towards the end in one smooth motion. For longer hair, you may find it's easier to straighten the back sections by bringing it towards the front.



- 6** Keep the iron moving to avoid damaging your hair from excess heat. Adjust the heat settings as needed before moving to the next section of hair. Because the iron is already hot, it may take some time to cool.



- 7** Take another section of hair from the bottom to continue straightening section by section.



- 8** To make it easier to manage, clip sections of your hair to keep it out of your way while you work on another section.



- 10** As a finishing touch for a sleek shiny look, drop a few drops of HSI Argan Oil (sold separately) on your palms. Rub your palms and apply evenly starting at the ends.



**Never touch heating plates when hot**

## STYLING TIPS

1. Pretreat hair with the HSI Thermal Protector (sold separately)
2. Make sure to select the right temperature for your hair type
3. Never flat iron wet or damp hair
4. Place glove on the hand in which you hold the hair
5. Wait until the plates reach the desired temperature to carry out styling
6. Place small, even sections of hair between the plates



**For more information, email us at:**  
[service@hsiprofessional.com](mailto:service@hsiprofessional.com)

**KEEP ORIGINAL SALES RECEIPT AS PROOF OF PURCHASE FOR WARRANTY PURPOSES.**