

QUICK START GUIDE

HOW TO MAKE
THE BEST
MARGARITA
(MAKES 3-4 DRINKS)

- 1** 4 FL OZ (120 ML)
TEQUILA
- 2** 3 FL OZ (90 ML)
TRIPLE SEC
- 3** 1-2 SQUIRTS
LIME JUICE
- 4** 7 FL OZ (210 ML)
MARGARITA MIX
- 5** POUR INGREDIENTS
IN BLENDER JAR,
SHAVE ICE AND
BLEND WITH
INGREDIENTS
(SEE BACK FOR
DIRECTIONS).
- 6** ENJOY!

Oster®

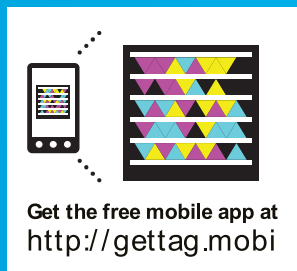
ICE

SHAVING BLENDER

"Shhh...the secret is
in the shaved ice."



BLENDER BY DAY. ICE SHAVER AT NIGHT.



Get the free mobile app at
<http://gettag.mobi>

YOU'RE JUST ONE CARD FLIP AWAY FROM ENJOYING
RESTAURANT-STYLE BEVERAGES AT HOME.

ARE YOU READY?

DELICIOUS FROZEN DRINKS IN 6 EASY STEPS.

1 ASSEMBLE IT

Place **BASE** on clean, dry, flat surface with control panel facing you. Place **ICE RESERVOIR** (clear plastic bowl) on top of **ICE SHAVER MAIN BODY**. With handle on left, place **ICE SHAVER MAIN BODY** on motor **BASE**. To **LOCK** components together, turn counter-clockwise (use *aligning arrows*).



TIP: Never put anything but ice in the ICE SHAVER ASSEMBLY.

2 LOAD IT

Fill **ICE RESERVOIR** to max **ICE LEVEL** with ice and put on **ICE RESERVOIR LID**. Turn clockwise to loosen, counter-clockwise to tighten.



TIP: Store-bought ice (thawed for 15-30 minutes) usually works best. Never put anything but ice in the ICE SHAVER ASSEMBLY.

3 FILL IT

Fill the **BLENDER JAR** with drink mix.



TIP: Don't overfill! Many blended drinks increase in volume after blending.

4 SHAVE IT

Place **BLENDER JAR** underneath **ICE CHUTE**, turn on and press the **AUTO SHAVE** button. To serve a full pitcher, shaved ice should fill the blender jar up to the 4-5 cup indicator. Manually press the **PULSE** button to add more shaved ice if desired.



TIP: If unit will not start and red arrow lights in center of Control Panel are flashing, recheck that **ICE SHAVER ASSEMBLY** components are in the **LOCKED** position.

5 BLEND IT

Remove **ICE SHAVER ASSEMBLY** and place the **BLENDER JAR** (make sure the blending jar lid cap is snapped closed) on the motor base. Press **AUTO BLEND**.



TIP: For manual blending, use the **LOW**, **MEDIUM** and **HIGH** buttons. Press **STOP** when drink reaches desired consistency.

6 POUR IT

Remove the **BLENDER JAR** from the base, flip open the lid cap cover and pour the delicious frozen bliss into your favorite glass.



TIP: To customize your drink, see the instruction manual.